

XLVIII. — *Coleoptera* (Cerambycidae) from the Seychelles Islands, Aldabra, and Rodriguez \*. By CHR. AURIVILLIUS (Stockholm).

[Plates XII. & XIII.]

THE present collection, which has been entrusted to me by Dr. Hugh Scott, of the University Museum of Zoology, Cambridge, England, comes chiefly from three different localities—the Seychelles Islands, the island of Aldabra, and Rodriguez.

**Seychelles.**—The oldest list of Cerambycids from the Seychelles Islands known to me was published in 1893 by A. Lameere (Bull. Soc. Ent. Fr. 1893, p. 105–106) and contains eight species, viz. *Macrotoma wrighti*, Waterh. (1880), *Xystrocera globosa*, Ol., *Ceresium flavipes*, F. (*simplex*, Gyllenh.), *Ceresium albopubens*, Fairm. (1891), *Coptops humerosa*, Fairm. (1871), *Tragocephala alluaudi*, sp. n., *Olenecamptus bilobus*, F., and *Apomecyna sechellarum*, sp. n., all taken in 1892 by Ch. Alluaud.

Besides *Coptops humerosa*, Fairmaire also described in 1871 another Cerambycid from the Seychelles, *Hippopsis quadricollis*, not met with by Alluaud.

In his paper on insects collected by Dr. Abbott in the Seychelles (Proc. U.S. National Museum, xix. no. 1119, 1897) M. Linell enumerates only two Cerambycids, *Xystrocera globosa* and *Coptops ædificator*, F. (*bidens*, F.).

In the same year A. Théry described as new a species from La Digue, *Apomecyna fauveli* (= *Sybra geminata*, Klug, ab.), and recorded *Stromatium barbatum*, F., as a member of the fauna of the Seychelles.

Ch. Alluaud enumerates in his great catalogue ('Liste des Insectes Coléoptères de la Région Malgache,' 1900, in

\* [This paper forms part of the series of reports of the Percy Sladen Trust Expedition to the Indian Ocean under Professor J. Stanley Gardiner, F.R.S., in 1905 and 1908–9. A special set of volumes (Trans. Linn. Soc. London, ser. 2 (Zool.), xii.–xviii., from 1907 onwards) contains the majority of these reports, but several of those dealing with insects have had to be published elsewhere. I am indebted to the Editors of the 'Annals and Magazine of Natural History' for accepting the present paper, as they have already done with several others. I am responsible for the lists of localities and the biological notes in Professor Aurivillius' paper. A first set of specimens, including the *types* of all the new forms, will be placed in the British Museum; other series remain with Professor Aurivillius and in the Cambridge University Museum. —HUGH SCOTT.]



Grandidier, Hist. Nat. Madag. xxi. 1) 11 species as occurring in the Seychelles Islands, all mentioned in the foregoing papers. *Apomecyna fauveli* is, however, registered as a synonym of *Pterolophia sechellarum*.

Lastly, Kolbe, in his paper "Die Coleopterenfauna der Seychellen," 1910, enumerates 12 species, the same as those in Alluaud's list, but *Apomecyna fauveli* is regarded as a distinct species.

The present collection adds no less than 12 species to the list, and brings the total number of Cerambycids known from the Seychelles up to 23, of which 14 or 15 (=about 60 per cent.) seem to be endemic.

The endemic species are: *Macrotoma wrighti*, Waterh.; *Platygynathus sechellarum*, Auriv.; *Paradandamis fuscovittata*, Auriv.; *Micronæmia albosignata*, Auriv., *glauca*, Auriv., and *bifasciata*, Auriv.; *Ceresium albopubens*, Fairm.; *Idobrium sechellarum*, Auriv.; *Obrium nitidicolle*, Auriv.; *Anomoderus rugosicollis*, Auriv.; *Coptops humerosa*, Fairm.; *Pterolophia instabilis*, Auriv.; *Hyllisia quadricollis*, Fairm., and *Mahenes semifasciata*, Auriv. *Tragocephala alluaudi*, Lameere, which also is only known from the Seychelles, is probably only an aberration of *Tragocephala variegata*, Bertol., from the mainland of Africa, and introduced.

The non-endemic species are: *Xystrocera globosa*, Ol., also known from Madagascar, Mauritius, Egypt, South Asia, Java, Celebes, and the Philippine Islands; *Stromatium barbatum*, F., widely distributed in South Asia and also found in Madagascar, Mauritius, and Bourbon; *Ceresium flavipes*, F. (*simplex*, Gyllenh.), common from Madagascar to New Guinea and the Philippine Islands; *Coptops ædificator*, F. (Africa and S. Asia); *Tragocephala comitessa*, White (S. Africa); *Olenecamptus bilobus*, F. (occurs in S. Asia from Ceylon to New Guinea, but is not found in Madagascar or the islands adjacent to Africa); *Sybra* (= *Pterolophia*) *geminata*, Klug (Madagascar), and *Exocentrus reticulatus*, Fairm. (Madagascar, Comoros). Nearly all of these have probably been introduced in recent times by human agency.

Aldabra.—On the small island of Aldabra hitherto only two species of Cerambycids were known to occur, viz. *Glaucytes aldabrensis* described by Linell in 1897 from Dr. Abbott's collections (Proc. U.S. Nat. Mus. xix. no. 1119, p. 701) and *Idobrium voeltzkowi* described by Professor Kolbe in his paper "Koleopteren der Aldabra-Inseln" (Abhandl. Senckenb. Naturf. Ges. xxvi. 1902, pp. 567–586): both species are known exclusively from Aldabra. The



present collection contains five more species, viz. *Macrotoma* sp.; *Paralocus semitibialis*, Fairm. (also in Madagascar); *Idobrium femoratum*, Auriv.; *Coptops ædificator*, F. (widely distributed in the African region), and *Prosopius dentatus*, Ol. (only known from some of the small neighbouring islands and from the Mascarenes, but not from Madagascar).

The Cerambycid fauna of Aldabra comprises accordingly seven species, of which three probably are endemic and one also occurs on the mainland of Africa.

Rodriguez.—Six species of Cerambycidae were recorded from this island by C. O. Waterhouse in his report on the Coleoptera collected by the "Transit of Venus Expedition" (Phil. Trans. Roy. Soc. vol. 168 (extra vol.), pp. 510–533, pl. liii, 1879). In his above-mentioned 'Liste des Insectes Coléoptères de la Région Malgache,' Alluaud adds two more, making a total of 8 recorded from this far outlying, highly interesting island, viz. *Macrotoma simplex*, Waterh. (endemic); *Xystrocera globosa*, Ol.; *Stromatium barbatum*, F.; *Phoracantha semipunctata*, F. (Australian, undoubtedly introduced); *Ceresium flavipes*, F. (*simplex*, Gyllenh.); *Batocera rufomaculata*, De Geer (= *rubus*) (also found in Madagascar, Mauritius, and Bourbon); *Coptops ædificator*, F., and *Prosopius dentatus*, Ol.

Through the collections made by H. J. Snell and H. P. Thomasset in the year 1918\* four very remarkable species have been added to the list: *Idobrium magnum*, Auriv. (endemic); *Glaucytes interrupta*, Ol. (also known from Madagascar and Bourbon); *Madecops denticollis*, Fairm.? (? also from Mauritius and Bourbon), and *Mimecyrida fasciculata*, Auriv. (endemic).

The Cerambycid fauna of Rodriguez consists then of 12 species, of which three are highly differentiated endemic forms.

The carefulness and competence with which the members of the Percy Sladen Trust Expedition have performed the task entrusted to them is proved, not only by the many newly discovered forms, but also by the fact that they have met with all forms previously known from the Seychelles and Aldabra, with the exception only of *Macrotoma wrighti*, Waterh., and *Tragocephala alluaudi*, Lameere, of which the latter, however, was probably only accidentally introduced into the islands.

\* See H. J. Snell and W. H. T. Tams, "The Natural History of the Island of Rodriguez," Proc. Camb. Phil. Soc. xix. part 6, pp. 283–292 (1920).



I am indebted to Dr. Hugh Scott for notes on the biology of some of the species.

### Prioninæ.

1. *Macrotoma* (*Hovatoma*) *simplex*, C. O. Waterh. (?).

♂. Head, pronotum, antennæ, and legs dark brown. Elytra and underside paler brown. Antennæ nearly as long as the body, first joint hardly reaching behind the eyes, about twice as long as broad, coarsely punctured; third joint quite cylindrical, 8 mm. long, as long as the two succeeding joints united, last joint acuminate, longer than the 10th joint and finely aciculate-punctate. Mandibles short, moderately punctured in basal half. Head coarsely punctured, with some short hairs in the broad furrow between the eyes and the antenniferous tubercles. Pronotum broader than long, tapering towards the apex, crenulate without spines along each side, with two posterior and one anterior impressions on the upperside and three subnitid elevations; coarsely but rather sparsely punctured in the middle, but finely and very densely punctured at the sides and at the anterior angles, nearly glabrous, with a few hairs only in the middle between the elevations; hind margin convex in the middle and densely ciliate; hind angles produced and directed obliquely backwards. Scutellum obtusely rounded, brown with blackish margin, glabrous, minutely and sparsely punctulate. Elytra glabrous, rugulose-punctate, not granulose, with three rather obsolete raised lines; the punctures much coarser in the basal fourth. Sterna, especially metasternum, hairy. Abdomen subnitid, sparsely punctate and pilose; last segment broadly emarginate at apex and densely ciliated at margin. Legs dark brown, subnitid; femora thickened at base, front and middle femora spinose beneath and sparsely granulose, hind femora nearly smooth; all the femora hairy beneath at base; tibiæ somewhat compressed and nearly triangular in section, fore tibiæ densely clothed beneath with long hairs in apical half; fore tarsi dilated, with the first joint shorter than the next two joints united, last joint not so long as joints 1-3 united. Length 41 mm.

*Loc.* Rodriguez: 1 ♂, 1918 (*Snell and Thomasset*).

The male of *M. simplex* was hitherto unknown, and I have not seen the female. It is, however, very probable that the present male belongs to the same species as the female described by C. O. Waterhouse, as this is the only species



of *Macrotoma* known from Rodriguez. Lameere refers *M. simplex* ♀ to the group of species with nearly approximated eyes ("yeux rapprochés en dessus"); in the male the eyes are, however, rather widely (2.5 mm.) distant on the upperside. The sides of the prothorax are rather strongly convex a little behind the middle.

## 2. *Macrotoma* (*Hovatoma*) sp.

*Loc.* Aldabra: Takamaka, 2 examples, x. 1908 (*Fryer*).

Both specimens are nearly destitute of legs and antennæ, and are badly damaged. They were evidently found dead, and are not fit to be described.

A narrow, nearly cylindrical, pale brown species, which seems to be identical with or nearly allied to *M. waterhousei*, Lameere. Length of the male 24 mm., of the female 30 mm.

## 3. *Platygnathus* (?) *sechellarum*, sp. n. (Text-fig. 1.)

♀. Head, thorax, antennæ, and legs blackish; elytra dark brown, blackish at the base; abdomen dark brown, paler at the sides. Head and pronotum punctured in the middle and finely granulose at the sides, clothed with short yellowish hairs emitted from the punctures or from the granules. Head flattened between the eyes, slightly concave between the antenniferous tubercles; genæ rather long. First antennal joint obconical, hardly reaching beyond the middle of the eye; second joint half as long as the first joint or a little longer (the following joints are missing). Pronotum broad, nearly as broad as the elytra at the base, broadest between the posterior lateral angles; apical angles obtuse, anterior lateral angles small; sides slightly concave between the lateral angles, posterior lateral angles broad and produced; hind angles rather acute; sides between them and the posterior lateral angles distinctly emarginate. Scutellum obtusely rounded with few shallow punctures. Elytra punctured all over, with very minute yellowish setæ in the punctures; the punctures slightly coarser at the base; no granules; a short sutural spine at apex; the raised lines very obsolete. Underside and legs with setiferous punctures; abdomen with smaller and more crowded punctures. Length 39 mm. (abdomen swollen and protruding behind the elytra).

*Loc.* Seychelles: Frigate Island, 1 ♀, 1905 (*Gardiner*).

This interesting species differs from the only hitherto



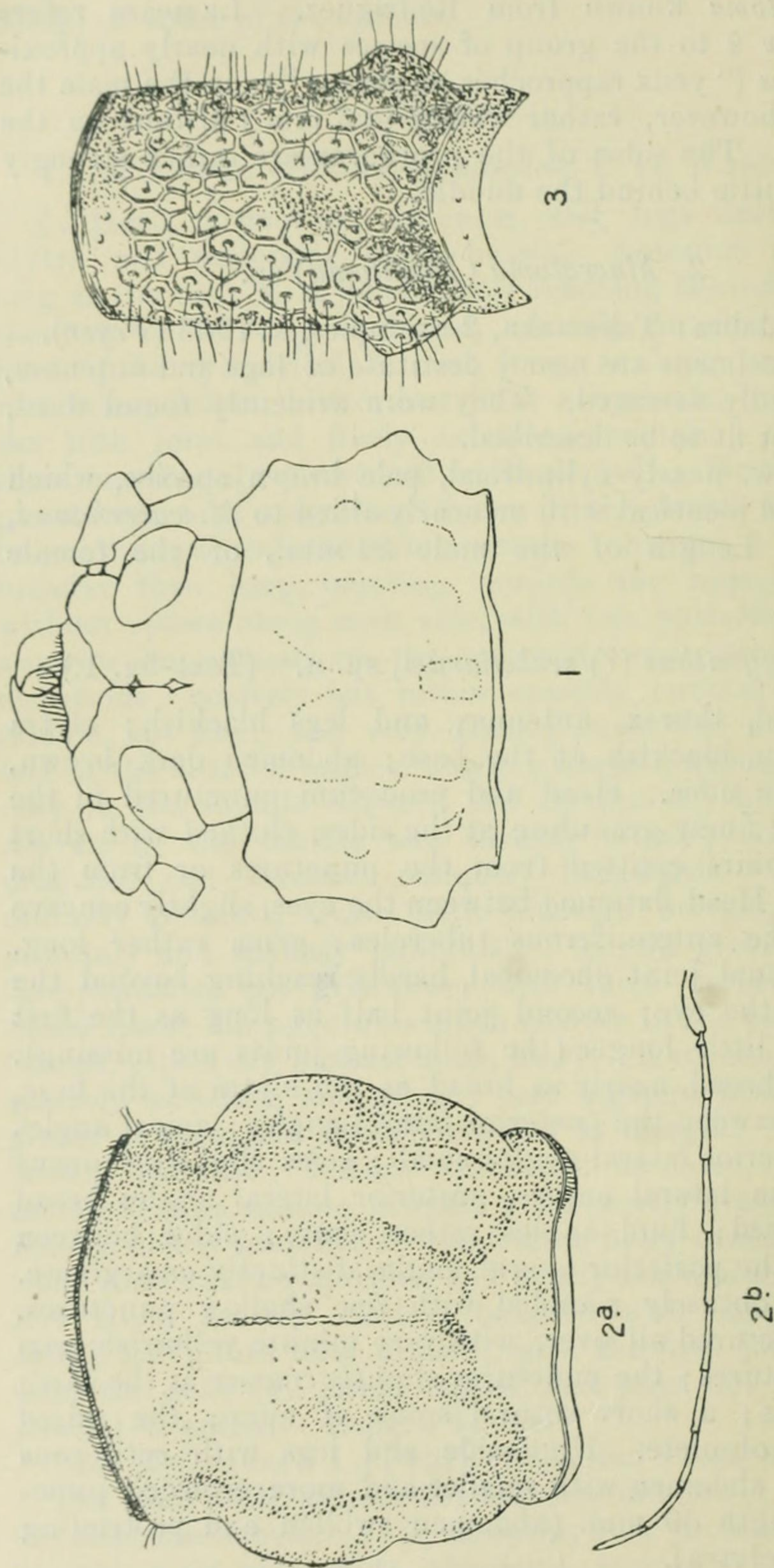


Fig. 1.—*Platynathus sechellarum*, sp. n., head and prothorax,  $\times 4$  (the specimen is asymmetrical, having an extra tubercle on the posterior part of the right-hand lateral margin, as is shown in the figure).

Fig. 2.—*Idobrium magnum*, sp. n.: a, prothorax,  $\times 20$ ; b, antenna,  $\times 4$ .

Fig. 3.—*Anomoderus rugosicollis*, sp. n.: prothorax,  $\times 50$ .



known species of the genus by the form of the pronotum and the somewhat shorter second joint of the antennæ. Its generic position is somewhat doubtful, as the male is unknown.

PARADANDAMIS, gen. nov.

*Front* subvertical, with a slightly curved transverse line immediately below the antennal supports; genæ extremely short. *Eyes* large and convex, coarsely faceted and strongly emarginate; the lower lobes large and nearly touching the base of the mandibles. *Antennæ* inserted near the base of the mandibles, nearly as long as the body in the male; second to fifth or sixth joints ciliated below; the first joint obconic and slightly curved, not reaching the hind margin of the eyes; the third joint elongate, but hardly reaching the base of the elytra, and much shorter than the fourth and fifth united; joints 6-10 slightly angulate at the apex; eleventh joint acuminate, hardly longer than the tenth; joints 3-11 finely carinate on the front edge, pubescent and minutely punctulate; the first and second joints subnitid and rather strongly punctate. *Prothorax* transverse, not broader than the head with the eyes, bisinuate at base, with the hind angles somewhat produced; the lateral edges very fine between the hind angles and the coxal cavities, thence completely wanting; no punctured side area. *Scutellum* as long as broad, subtriangular. *Elytra* long, subcylindrical, rounded and unarmed at the apex; each with three obtuse, somewhat waved costæ; epipleural fold as in the genus *Dandamis*, strongly widened at base. *Legs* slender; femora slightly compressed, sublinear; first joint of the hind tarsi shorter than the next two united. Last *ventral segment* of the male nearly truncate at the apex.

This interesting genus seems to be most nearly allied to *Dandamis*, Gah., from which it, however, differs by the structure of the antennæ and the prothorax. The episterna of the metathorax are more restricted behind on the outer side than on the inner, and are obliquely acuminate at the apex.

*Paradandamis* is another of the forms which connect Lacordaire's *Ægosominæ* and *Monodesminæ*, and it proves the near relation of these groups, newly acknowledged also by Lameere (Bull. Mus. Paris, xxi. 1915, p. 61). It may be noted here that *Prionus reticulatus*, Dalm., has nothing at all to do with *Anacanthus costatus*, Serv., but is a female of a species of *Megopis*, sens. lat., unknown to me.



4. *Paradandamis fuscovittata*, sp. n. (Pl. XIII. fig. 4.)

♂. Pale brown; head, prothorax, and tibiae darker brown, elytra testaceous-brown, each with two longitudinal darker stripes on the outer costae; head and prothorax rather closely and coarsely punctured, above nearly naked, only with very short hairs; eyes equally distant above and below, the distance somewhat narrower than the scutellum; prothorax with a very obtuse angle near the middle of each side, the disc with two nearly obsolete transverse elevations; scutellum dark brown, subtriangular, hairy at apex; elytra closely and very coarsely punctured, subnitid with short erect hairs rising from the punctures; body beneath, and legs, more densely hairy. Length 17 mm.

*Loc.* Seychelles: Mahé, 1908-9, 1 ♂, without further record of locality.

## Cerambycinae.

*Micronæmia*, gen. nov. (Disteniinorum).

*Eyes* prominent, rather finely faceted, broadly distant above and below, feebly emarginate. *Head* slightly exserted and briefly narrowed behind the eyes. *Maxillary palpi* long, with the last joint fusiform and pointed or obliquely truncate and triangular. *Antennae* longer than the body by one-fourth to one-third of their length; first joint curved, gradually thickened towards the apex; third joint slightly longer than the first and the fourth; the following joints gradually shorter. *Prothorax* unarmed, more or less rounded at the sides and broadest at the middle, truncate at apex and at base, convex above, without tubercles or rugosities. *Scutellum* rather narrow, truncate at apex. *Elytra* somewhat flattened above at the base, gradually tapering towards the apex, which is slightly acuminate; marked above, except near the apex, with rows of punctures. *Prosternal process* very narrow, but reaching as far behind as the coxae; metasternal process rather broad, sloping anteriorly. Front and middle *coxae* globular; acetabula of front coxae broadly open behind, of middle coxae slightly open on the outer side. *Legs* elongate; femora pedunculate and gradually but slightly thickened towards apex, hind femora reaching to or behind the apex of the elytra; tibiae very long and narrow, straight and cylindrical, middle tibiae with a slight notch on the outer side near the apex. The first joint of the hind tarsi is as long as or longer than the second and third united.



The present genus differs from most of the other genera belonging to the Disteniini by having the prothorax short, regularly convex, and unarmed. From the genus *Eupalelius*, Fairm., which also has an unarmed prothorax, it seems to differ by the much shorter prothorax, the longer antennæ, and the shorter basal joint of the hind tarsi.

The majority of specimens of the first two species of this genus were bred from larvæ found in fallen and rotting sticks of endemic trees, principally *Northea*, in the highest forests. The records given below show that the greater number of these larvæ were collected in Silhouette in the drier months of August and September, but some were also obtained in Mahé in December.

5. *Micronæmia albosignata*, sp. n. (Pl. XII. fig. 1.)

Body black, with some markings of greyish-white pubescence; the face before the antennæ, the femora, and joints 3-7 of the antennæ, except at apex, brown or brownish; the first and the four last joints of the antennæ as well as the tibiæ and tarsi more or less darkened, fuscous. Sides of the meso- and metasternum, hind margin of pronotum (rather broadly), two transverse bands on the elytra (one before and one behind the middle), the suture between the bands, an oblique stripe between the bands emitted from the suture, and the apical fifth of the elytra, densely clothed with white or greyish pubescence. Length 7-9 mm.

Pronotum transverse with the sides strongly rounded. The elytral rows of punctures are somewhat irregular at the base and cease at the posterior white band or a little behind it; the subhumeral and humeral rows are very distinct and regular, the latter forming a distinct edge. The white markings of the elytra are sometimes indistinct or almost wanting (by abrasion?).

*Loc.* Seychelles: Silhouette, Mahé.

"Of the 11 examples 8 were bred from larvæ or pupæ, six of which were found in the high forests of Silhouette in August or September, and two in the high forests of Mahé in December, at various places between 1000 and 2400 feet. One specimen bears a record of having been bred from a fallen stick of the endemic 'Capucin' (*Northea*) tree from the highest peak of Silhouette, and, as far as I can remember, most or all of the larvæ were found in fallen and rotting sticks or quite small branches of dicotyledonous trees, possibly *Northea* in every case. Compare the records given under the following sp., *M. glauca*, and its ab. *humeralis*.



All the bred examples of *M. albosignata* and *M. glauca* were reared by a method which I had seen practised in England by Dr. Sharp. It consists in packing a screw-topped glass bottle of small diameter tightly with fragments of the wood, and placing a single larva in each bottle in a crevice between the pieces, after which the zinc top is screwed on and the bottle is left undisturbed, sometimes for weeks.

"The 3 specimens taken in an adult state were found respectively in the high forest of Morne Pilot (Mahé), xi. 1908; in Silhouette at about 1000 feet, viii.-ix. 1908; and in Mahé by Gardiner in 1905."—H. S.

6. *Micronæmia glauca*, sp. n.

Testaceous-brown; vertex, pronotum, and elytra blackish, rather densely clothed with a glaucous or greyish-green pubescence, and without markings; abdomen subnitid, black; antennæ, except the underside of the first joint, tibiæ, and tarsi sometimes more or less infuscated; the pubescence at the base and sides of the pronotum, on the scutellum and at the sides of the breast, often glistening white; last joint of palpi triangular; first antennal joint always testaceous below, following joints either testaceous-brown with black tips, or entirely fuscous; pronotum minutely punctulate, with nearly glabrous median line; elytra flattened in basal part, with six rows of punctures, the fourth row being the shortest; femora testaceous; tips of tibiæ and tarsi more or less fuscous. Length 6-8 mm.

*Loc.* Seychelles: Silhouette, Mahé.

"8 examples, 5 of which were bred from larvæ, or in one case from a pupa, found in the high damp forests. Two larvæ and the pupa were found in Silhouette in August or September, and one larva was found in the high forest of Morne Seychellois (Mahé) in December. One of the Silhouette larvæ was found in a stick of 'Capucin' (*Northea*) on the highest peak, about 2400 feet. For methods of breeding see under *M. albosignata*.

"The 3 specimens taken as adults were found respectively at over 1000 feet in Silhouette, viii. 1908; high damp forest at summit of Morne Pilot, Mahé, over 2000 feet, xi. 1908; and in Mahé, 1905 (*Gardiner*)."—H. S.

*M. glauca*, ab. *humeralis*, ab. nov.

Differs from the typical form by being smaller and having on the elytra a lateral subhumeral yellow stripe,



which often emits a short transverse yellow band towards the suture behind the shoulders. Scutellum yellowish. Legs and antennæ often darkened. Length 5–6 mm.

*Loc.* Seychelles: Silhouette, Mahé.

"11 specimens, 7 of which were bred. Four were reared from fallen sticks of 'Capucin' (*Northea*) found on the highest peak of Silhouette, about 2400 feet, viii.–ix. 1908; one from a larva found in 'Capucin' wood at about 1500 feet (Silhouette); one from a fallen stick of a dicotyledonous tree (not named) found just above Mare aux Cochons in Silhouette, over 1000 feet; and the remaining one from another larva found near Mare aux Cochons.

"The 4 examples taken as adults are all from the highest and dampest forest at the summits of Morne Pilot or Morne Blanc (Mahé), at end of October or in November 1908."  
—H. S.

7. *Micronæmia bifasciata*, sp. n. (Pl. XII. fig. 2.)

Black, with a sericeous pubescence; antennæ, palpi, legs, breast, shoulders, and two transverse lateral spots on each elytron, one before and one behind middle, testaceous or brown; antennal joints 3–7 and 10 black at tip, 8 and 9 entirely pale, 11 entirely black. Pronotum distinctly narrower at base than at apex, with the sides rounded in middle, longer than in the foregoing species, minutely transversely punctate-striate, the sculpture almost concealed by the yellowish adpressed pubescence, the hairs of which are directed upwards towards the median line. Tarsi fuscous, pale at base. Punctures of elytral rows coarse and reaching behind the middle. Length 5 mm.

*Loc.* Seychelles: Mahé, 1 specimen from the Mare aux Cochons district, about 1500 feet, 26. i.–2. ii. 1909; it was taken in a forest of the endemic "Bois de Fer" (*Vateria Seychellarum*), these trees being some of the largest and oldest in the forests of Mahé.

Easily distinguished by the form of the pronotum and the markings of the elytra.

8. *Xystrocera globosa*, Oliv.

*Loc.* Seychelles: Mahé; Port Victoria and other places in the cultivated country, 1905, 1906, 1908–9; one specimen is labelled "grub in sap of [the imported] 'Bois Noir,' *Albizia Lebbek*" (Gardiner, 1905). Rodriguez, 1918 (*Snell and Thomasset*). 33 examples in all.



All the specimens belong to the Asiatic *X. globosa* and not to the African *X. vittata*, F. See my paper on the Cerambycidae of Kilimandjaro, p. 142 (1908) \*.

9. *Stromatium barbatum*, Fabr.

*Loc.* Seychelles: Mahé; cultivated country, Port Victoria, &c., 1905 and 1908-9, 7 examples.

10. *Paralocus semitibialis*, Fairm.

? = *Teinotus cinereus*, Brancs.

*Loc.* Aldabra. Two examples, both taken at light, 1908-9 (*Fryer*). Named by Dr. Gahan, and agreeing with Fairmaire's description: I have not been able to compare them with specimens from Madagascar.

11. *Ceresium albopubens*, Fairm.

*Loc.* Seychelles: Mahe, xi. 1908, 1 specimen.

12. *Ceresium flavipes*, Fabr.

*Loc.* Seychelles, 16 specimens: Silhouette, Mahé. Silhouette: Mare aux Cochons plateau, over 1000 feet, ix. 1908. Mahé: near Morne Blanc, about 1000 feet; Cascade, about 1000 feet; Baie Lazare, &c. Rodriguez: 3 examples, 1918 (*Snell and Thomasset*).

13. *Idobrium voeltzkowi*, Kolbe.

*Loc.* Aldabra: 2 specimens (*Fryer* coll.), one from Takamaka, xi. 1908, the other bearing only the record "comes to light."

Kolbe referred the genus *Idobrium* to the Graciliinae, but the characters he gives ("Acetabula coxarum anticarum et intermediarum clausa") are those of the O브리inae. Kolbe had only a single male before him; at least one of the specimens before me is a female, and it has the abdomen formed as in the O브리inae, proving that the genus belongs to that group.

14. *Idobrium femoratum*, sp. n.

Pale testaceous, head and prothorax somewhat darker; densely clothed with a fine greyish pubescence; apical club

\* In Y. Sjöstedt's 'Kilimandjaro-Meru Expedition,' vol. i. Abteilung 7, no. 11 (pp. 139-152).



of hind femora dark fuscous; antennæ without erect hairs, somewhat longer than the body, with the third joint hardly longer than the fourth; prothorax much longer than broad, cylindrical, not narrowed at base, slightly constricted behind the apex, above with five obtuse elevations and slightly tumid at each side in the middle, narrower than the head with the eyes; elytra parallel-sided or slightly widened posteriorly, broadly rounded at apex, each somewhat pointed at the suture, distinctly punctate from the base to three-fourths of their length, the punctures above arranged in 6-7 regular rows without distinct hairs, apical fourth nearly impunctate; hind femora reaching a little beyond the apex of the elytra; hind tibiæ with some few short hairs. Length of body 7-8 mm.

*Loc.* Aldabra: Takamaka, xi. 1908, 2 specimens (*Fryer*).

15. *Idobrium magnum*, sp. n. (Text-figs. 2 a, 2 b.)

Unicolorous, brownish-testaceous with a very fine greyish pubescence, rather dull and without erect hairs; eyes distant above and below; head impunctate above; prothorax not longer than broad in the middle, slightly narrower at base than at apex, constricted behind apex and with a transverse basal furrow curved in the middle, above with an obtuse longitudinal callosity on each side of the disc and with the lateral margin obtusely rounded in the middle, the disc with shallow, rather obsolete punctures; scutellum rounded at the apex; elytra parallel-sided to near apex, each sharply rounded or subacuminate at the apex, finely and irregularly punctured from the base almost to the apex, the punctures rather crowded and not stronger at base, a fine elevated line from near the base behind the humerus to near the apex; extreme apex subnitid, without punctures; hind femora not reaching the apex of the elytra, tibiæ with some few erect hairs. Length 13 mm., breadth 3 mm.

*Loc.* Rodriguez: viii.-xi. 1918, a single female (*Snell and Thomasset*).

The third joint of the antennæ is hardly as long as the fourth.

16. *Idobrium sechellarum*, sp. n. (Pl. XII. fig. 3.)

Brownish or testaceous; front and vertex of the head, pronotum, a broad lateral stripe and a median spot connected with the lateral stripe on the elytra, infuscated, dark brown or blackish, the club of the hind femora and the apical



joints of the antennæ also often darkened ; body above with short erect hairs ; joints 2-6 of the antennæ distinctly ciliated below ; body with a very fine greyish pubescence ; eyes broadly distant ; head, with the eyes, broader than the prothorax, impunctate, with a short fine furrow between the antennæ ; the antennæ longer than the body in both sexes, their first joint obconic, slightly curved, the third joint as long as the fourth, but shorter than the first and the fifth ; prothorax longer than broad, much more narrowed at base than at apex, obtusely protuberant on each side a little before the middle (more so in the female than in the male), its upper side depressed, nearly flat, with the usual elevations nearly obsolete ; scutellum small, narrow ; elytra parallel-sided, somewhat dehiscent and separately rounded at apex, punctured from base to or somewhat beyond the middle, the punctures arranged in longitudinal rows, the apical half nearly impunctate ; the dark lateral stripe is more or less dilated at the base and behind, and is connected in the middle with a discal spot, which does not always reach the suture ; epipleural margin sometimes, and extreme apex always, pale ; legs testaceous, hind femora not reaching the apex of the elytra. Length 5-6.5 mm.

*Loc.* Seychelles, Mahé: Mare aux Cochons district, 1500 feet, 26. i.-2. ii. 1909, 7 ♂, 8 ♀, beaten from trees of endemic "Bois de fer" (*Vateria Seychellarum*) \*.

This species is somewhat variable in colour and the antennæ of the male often have joints 5-11 dark fuscous ; rarely the club of the hind femora is also darkened.

In all the species of *Idobrium* the suture of the elytra is longitudinally impressed at the base behind the scutellum, forming a longer or shorter groove, which is best developed in *Idobrium magnum*.

#### KEY TO THE SPECIES OF *IDOBRIUM*.

- A. The punctures of the elytra not arranged in longitudinal rows.
  - a. Prothorax not longer than broad, slightly constricted at base. Length 13 mm. .... 1. *I. magnum*.
  - b. Prothorax longer than broad, strongly narrowed at the base. Length about 6 mm. .... 2. *I. voeltzkowi*.
- B. The punctures of the elytra arranged in longitudinal rows from base to middle or somewhat beyond middle.
  - a. Prothorax strongly constricted at base, sub-

---

\* See also under *Obrium nitidicolle* and *Micronæmia bifasciata*.



cordiform, dilated in the middle and nearly flat above. Elytra marked with a fuscous lateral stripe. Body above with erect hairs.

Antennæ ciliated beneath ..... 3. *I. seychellarum*.

b. Prothorax much longer than broad, quite cylindrical, not narrowed at base. Body without erect hairs above. Antennæ not ciliated ..... 4. *I. femoratum*.

17. *Obrium nitidicolle*, sp. n. (Pl. XIII. fig. 7.)

Yellowish-testaceous, a broad stripe on each side of the prothorax and five spots (one sutural before middle, one humeral, and one discal behind middle) on the elytra fuscous-brown; the elytral spots often more or less obsolete; head sloped in front, subnitid, the clypeus limited above by a rather deep, straight groove; antennæ longer than the body in both sexes, finely pubescent without erect hairs, third and fourth joints shortly ciliated below, first joint clavate, third joint a little longer than the fourth, joints 5-8 equally long, each longer than the third, joints 9-11 gradually slightly diminishing in length; prothorax very elongate, more than twice as long as broad at the base, nearly cylindrical, a little narrower at base than at apex, with the sides slightly convex in the middle between the transverse grooves, apical groove obsolete above, basal groove narrow, curved above in the middle; the whole pronotum shining, naked, impunctate, and smooth without elevations; elytra parallel-sided, rounded at the apex, naked, shining, distinctly punctate from base to middle or a little beyond the middle, the punctures arranged in rows or nearly so; femora subnitid, naked, gradually and slightly clavate, hind femora not reaching the apex of the elytra; tibiæ with very short erect hairs; first joint of hind tarsi as long as the second and third united. Length 5-6 mm.

Since the front coxæ are exerted and the last joint of the palpi subcylindrical, I have referred this small species to *Obrium*. The longitudinal grooves of the episterna of the metathorax are, however, wanting or concealed by the lateral margins of the elytra.

*Loc.* Seychelles: Silhouette, Mahé. Silhouette: Mare aux Cochons plateau or forest near by, over 1000 feet, ix. 1908, 1 ♂, 1 ♀. Mahé: near Morne Blanc, about 1000 feet, xi. 1908, 3 ♂, 2 ♀; Mare aux Cochons district, about 1500 feet, i.-ii. 1909, 1 ♂ from forest of "Bois de Fer" (*Vateria Seychellarum*).



18. *Anomoderus rugosicollis*, sp. n. (Text-fig. 3.)

Small, fuscous-brown; head and pronotum blackish; elytra brownish; legs shining, castaneous; wings translucent, whitish; head small, rugoso-punctate, the front vertical, transverse; antennæ much shorter than the body, reaching a little beyond the apex of the elytra, subnitid, first joint short, obovate; fourth joint a little shorter than the others, joints 3-8 slightly thickened at the apex; prothorax elongate, subcylindrical, strongly constricted at base and distinctly swollen or obtusely tuberculate on each side just before the basal constriction, nearly three times as long as broad at the base; except in the basal constriction closely set with very small depressed (and in the middle foveate) warts, from each of which arises an erect hair; elytra abbreviated, rounded at apex, irregularly punctate with erect hairs in the punctures; abdomen parallel-sided, rounded at the apex, as long as the wings; legs short, hind femora not reaching the apex of the abdomen; femora abruptly clavate with a slender peduncle and an elliptical club; first joint of hind tarsus as long as the second and third united. Length 4 mm.

*Loc.* Seychelles. Mahé: 1 specimen, swept from low herbage of ferns &c. close to the house at Cascade Estate, about 800 feet, 1909.

This little species agrees with *Anomoderus* in having divided eyes, short antennæ, and elongate prothorax, but differs from the hitherto known species of the genus, both of which are from Madagascar, by the form and sculpture of the prothorax.

19. *Glaucytes interrupta*, Ol.

*Loc.* Rodriguez (*Snell and Thomasset*), 1918, 1 ♀.

20. *Glaucytes aldabrensis*, Linell.

*G. aldabrensis* is probably a local race of *G. lineatocollis*, Fairm., and seems only to differ by having the tip of the elytra unarmed and their lateral margins without a rufous stripe.

*Loc.* Aldabra: 3 ♂, 3 ♀, "only found in the flowers of one species of tree (name not recorded), xii. 1908" (*Fryer*).



## Lamiinæ.

21. *Coptops humerosa*, Fairm.

*Loc.* Seychelles: Silhouette, Mahé. Silhouette: near coast (one specimen) and Mare aux Cochons plateau, over 1000 feet (several specimens). Mahé: various places (not the high forests), 1905 and 1908-9. 13 examples in all.

22. *Coptops ædicator*, Fabr.

This widely distributed species is variable in colour and markings. The specimens from Assumption are uniformly grey with few and indistinct markings. The specimens from Rodriguez are, on the contrary, very distinctly and richly marked. Two specimens from Aldabra are much smaller than the others.

*Loc.* Assumption: 1909, 6 specimens labelled "very common on *Ficus*-trees" (R. P. Dupont); 1910, 1 example. Aldabra: 1907, 1 specimen (*d'Emmerez*); Takamaka, xi. 1908 and Esprit I., xii. 1908 (*Fryer*). Coetivy: 1905, 1 specimen. Chagos: Salomon and Diego Garcia atolls, 1905, several specimens. Rodriguez: 1918, 8 examples (*Snell and Thomasset*). 27 specimens in all.

23. *Tragocephala comitessa*, White.

*Loc.* Seychelles: Mahé, 1 ♀, 1914 (*Thomasset*).

Agrees closely with specimens from South Africa, and is undoubtedly introduced.

24. *Olenecamptus bilobus*, Fabr.

*Loc.* Seychelles: 16 specimens from Silhouette and Mahé. All the examples from Silhouette, 10 in number, were beaten at once from a single tree (of an introduced species) in the yard behind Mons. Dauban's house at La Passe, viii. 1908. Some of the Mahé specimens were collected in 1905 and 1906.

This beetle is at times a pest of cultivated figs in India, and references to it occur in the literature of economic entomology. It has recently been reared from larvæ found under the bark of a fallen *Ficus glomerata*, and notes and figures illustrating its life-history are contained in the Report of the Imperial Entomologist (Sci. Reports Agric. Res. Inst. Pusa, 1920-21, Calcutta, 1921, pp. 41-59, 6 plates).



25. *Madecops* (?) *denticollis*, Fairm. (?).

*Loc.* Rodriguez: 1918, 3 specimens (*Snell and Thomasset*).

Without a comparison with specimens from Bourbon, I am unable to say whether the form from Rodriguez is the same as Fairmaire's *denticollis* or is a nearly allied species. Fairmaire's description agrees, as far as it goes, rather well with the present specimens, except that the first joint of the antennæ is obconic rather than "crasse clavatus," that the prothorax is more transverse, not transversely wrinkled behind ("postice leviter plicatulo"), and that the elytra are rounded at the apex. The specimens are very like *Saperda vulpina*, Klug, which is said by Alluaud to resemble *Madecops denticollis*.

If *M. denticollis* really belongs to *Madecops*, then that genus has nothing at all to do with the Mesosini, but is most nearly allied to the Nipponini, from which it only differs by having the head considerably distant from the anterior coxæ. The eyes are emarginate, but not subdivided.

## MIMECYRIDA, gen. nov. (Velorinorum).

*Head* short, not retractile; front transverse, broadly concave between the antennary tubercles; genæ short. *Eyes* deeply emarginate, but not subdivided, coarsely faceted; their lower lobe subquadrate. *Antennæ* somewhat longer than the body, broadly distant at base, setaceous; first joint obconic, slightly flattened on under-side; third joint much longer than the first and also longer than the fourth, slightly curved; the following joints gradually decreasing in length. *Prothorax* short, transverse, distinctly and rather broadly constricted at base; sides unarmed, but slightly convex in the middle; apical groove obsolete, strongly arcuate above; a very small tubercle on each side at the apical margin; basal and apical margins truncate. *Scutellum* subquadrate with the apex truncate. *Elytra* subcylindrical, nearly parallel-sided; each rounded at apex with the sutural angle distinct; scutellar region somewhat elevated, posterior half with longitudinal costæ, humeral costa distinct from base. *Legs* rather short; femora thickened towards apex with a fine longitudinal line on each side, hind femora not reaching the apex of the abdomen; tibiæ rather long, cylindrical, intermediate tibiæ entire; first tarsal joint shorter than the second and third united; claws divaricate. *Acetabula*



of middle *coxæ* not open to the epimera; front *coxæ* slightly angulate exteriorly, their acetabula completely closed posteriorly. The *intercoxal process* of the prosternum and of the mesosternum rather narrow, slightly curved.

The species for which I have erected this new genus has entirely the habit of a smaller *Hecyrida*, but differs from that group by the exteriorly closed acetabula of the middle *coxæ* and the non-retractile head.

26. *Mimecyrida fasciculata*, sp. n. (Pl. XIII. fig. 6.)

Fuscous, densely clothed with a whitish tomentum and variegated with blackish spots and stripes; head with impressed median line and two fuscous spots between the antennæ; antennæ pubescent and set with very short pallid setæ, but not ciliate beneath, the first joint nearly reaching the middle of the prothorax; joints 3-6 variegated with small dark spots or rings, joints 7-11 blackish with pale basal ring; pronotum with broad dark median stripe and a small dark dot on each side of it, punctate, but the punctures hardly visible except in the median stripe; elytra very slightly emarginate, nearly truncate at base with the humeri distinct but rounded, lateral margin and humeral carina slightly waved, especially behind the middle, and clothed with short hairs on the wave-ridges; posterior half with 4-5 irregular discal costæ, not reaching the apex or obsolete before apex, two or three of these costæ furnished with small tufts of yellowish hairs; scutellar region variegated with fuscous, a broad lateral stripe from the base below the humerus to the middle, not visible from above except at its posterior end, a double row of small black sutural dots, and a large black subapical transverse spot behind the discal costæ, not reaching the sides; legs variegated with dark dots. Length 10 mm.

*Loc.* Rodriguez: 1918, 1 specimen (*Snell and Thomasset*).

The specimen is undoubtedly a female, the last ventral segment being long, as long as the third and fourth segments united, and furnished with a fine longitudinal groove; its apex is slightly emarginate in the middle.

27. *Pterolophia instabilis*, sp. n. (Pl. XIII. fig. 8.)

A true *Pterolophia* with the middle tibiæ entire, the first antennal joint flattened below, reaching nearly to the middle of the prothorax, and the eyes subdivided and distant above. Very variable in size, colour, and markings. There



are four or five, at first sight very different, forms, which are, however, connected by intergrades. Head greyish with or without brown speckles. Lower lobe of the eyes small, subquadrate, hardly as long as the gena. Antennæ about as long as the body, more or less distinctly annulate with pale yellow at base and apex of joints 3-10, and speckled with brown or fuscous. Prothorax transverse, truncate at base and apex, evenly convex above and finely punctured, with the sides arcuate, greyish or brownish without distinct markings. Scutellum always black or fuscous with narrow pale margins. Elytra rather short, truncate at base, and broader than the thorax, subcylindrical to beyond middle, thence narrowed and strongly sloping to the apex, each with the apex rounded and unarmed, somewhat flattened above from base to middle and very slightly swollen at the base on each side of the scutellum, and with a nearly obsolete discal costa in the middle; rather strongly punctate, the punctures nearly arranged in rows, stronger and deeper on the sides of the disc, some of the punctures being distinctly larger than others. According to colour and markings of the elytra the following varieties may be distinguished:—

- a. The *typical form* (Pl. XIII. fig. 8).—Ground-colour dark greyish-brown, a broad yellowish-white stripe from the shoulders to the suture, forming then a broad sutural band, which is widened posteriorly to an irregular pale patch at the beginning of the posterior declivity. The ground-colour consequently occupies the scutellar region, the whole sides (being much broader in the middle), and the apex of the elytra.
- b. *Ab. suturalis*, nov.—Elytra above from base to the posterior declivity with a very broad greyish-white sutural band, somewhat narrowed at the middle. Differs from the typical form by having the ground-colour of the sides produced to the shoulders, but not occupying the scutellar region.
- c. *Ab. abscissa*, nov.—The dark colour of the sides of the elytra more or less strongly widened above, often reaching the suture a little behind the middle and separating the anterior part of the pale sutural band from the posterior patch, which is nearly always extended over the whole declivity to the apex.
- d. *Ab. minuscula*, nov.—Differs from the typical form only by having the whole apical declivity as pale as the sutural band. Only a very small specimen, length 4 mm.



- e. *Ab. transversa*, nov.—Elytra greyish or dark brown, without other markings than a more or less distinct transverse whitish or greyish irregular fascia at the beginning of the posterior declivity.
- f. *Ab. unicolor*, nov.—Elytra unicolorous greyish or brown without markings, or only with 1–2 white dots on the declivity of each elytron.
- g. *Ab. nigrovittata*, nov.—Elytra pale yellowish-grey, each having on the side of the disc two nearly denuded blackish vittæ, of which the upper one is very short, and both are abbreviated towards the apex. Intermediate between *ab. suturalis* and *ab. unicolor*.

Length 4–7 mm.

*Loc.* Seychelles: Silhouette, Mahé, Long, and Anonyme Islands.

39 specimens in all. The forms *abscissa* (7 specimens), *transversa* (10 specimens), and *unicolor* (9 specimens) seem to be commoner than the others. About 20 examples, representing 5 forms, were taken in Long Island, a small coconut-planted islet with a few patches of native vegetation, close to Mahé, in July 1908. In Silhouette and Mahé this species was found at elevations of 1000 feet or more, in the endemic forests, but not in the highest and dampest zones of forest.

## 28. *Prosoplus dentatus*, Oliv.

*Loc.* Amirantes: Eagle I., 1905, 2 examples (*Gardiner*). Astove: 1907, 1 specimen (*Thomasset*). Aldabra: 1907, 1 specimen (*d'Emmerez*). Also known from Mauritius, Bourbon, and Rodriguez.

## 29. *Sybra geminata*, Klug.

*Loc.* Seychelles: Silhouette, Mahé. 35 specimens, from various places in the endemic forests at elevations between 1000 and 2000 feet: the only exception is a single specimen labelled as from St. Anne (a small cultivated islet near Mahé), 1905 (*Gardiner*).

A true *Sybra*, as Gahan has pointed out. Very variable in size, colour, and markings. "*Apomecyna*" *sechellarum*, *Lameere*, and *A. fauveli*, *Théry*, are undoubtedly only forms of *Sybra geminata*, *Klug*. "*Oopsis*" *biangulata* and *O. ephippiata*, *Fairm.*, and *Praonetha dorsata*, *Fairm.*, are probably also forms of this species. The size of the specimens before me varies from 6 to 10 mm.



30. *Hyllisia quadricollis*, Fairm.

*Loc.* Seychelles : Mahé, near Morne Blanc and Cascade Estate, 6 specimens.

Fairmaire described this species as an *Hippopsis*. The species of *Hippopsis* have, however, the head and eyes differently shaped, and seem to be restricted to the American fauna.

*H. quadricollis* agrees well with the genus *Hyllisia*, and seems nearly allied to *H. vittata*, Fahr., which by its short hind femora and the truncate apex differs from the type of *Hyllisia* (*stenideoides*, Pasc.). The antennæ are (as in typical *Hyllisia*) 12-jointed, and the first joint reaches the base of the prothorax. The antennal joints 1-5 are ciliated beneath with the ciliæ of joints 3-5 very long in the male; lower lobe of the eye elongate, much longer than broad, and nearly thrice as long as the gena; front strongly punctured and more so in the male than in the female.

31. *Exocentrus reticulatus*, Fairm.

*Loc.* Seychelles : Long I., vii. 1908, 1 example; Anonyme I., i. 1909, 3 specimens; these localities are two small coconut-planted islets near Mahé.

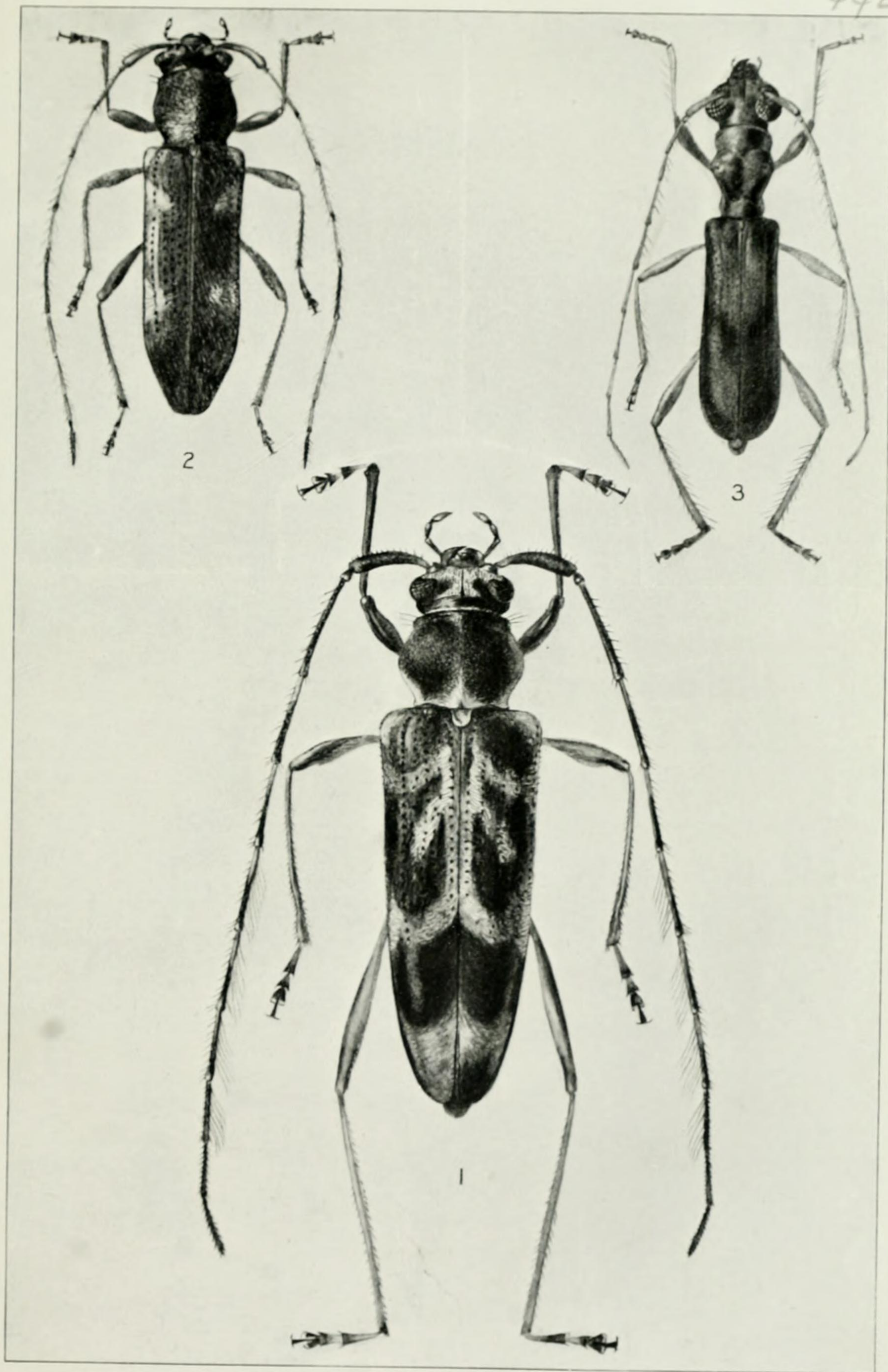
Known from Madagascar and the Comoro Islands, but not previously recorded from the Seychelles. Fairmaire erected in 1901 for this and three other species from Madagascar a new genus *Pseudocentrus*, which, however, seems not to be sufficiently distinct from *Exocentrus*.

## MAHENES, gen. nov. (Acanthocinorum).

*Head* a little broader than the prothorax at apex. Front transverse, somewhat depressed in the middle. *Eyes* coarsely faceted, emarginate; lower lobe subquadrate, twice as long as the gena. *Antennary tubercles* broadly separate and strongly divergent. *Antennæ* nearly twice as long as the body, 11-jointed, ciliated beneath to apex, but without hairs above; first joint obconic, rather short, not or hardly reaching the middle of the prothorax, much shorter than the third joint; third and fourth joints nearly equal; the following joints much shorter. *Prothorax* subquadrate with a small tubercle on each side behind the middle; the sides slightly arcuate; the base hardly narrower than the apex. *Scutellum* short and broad, rounded

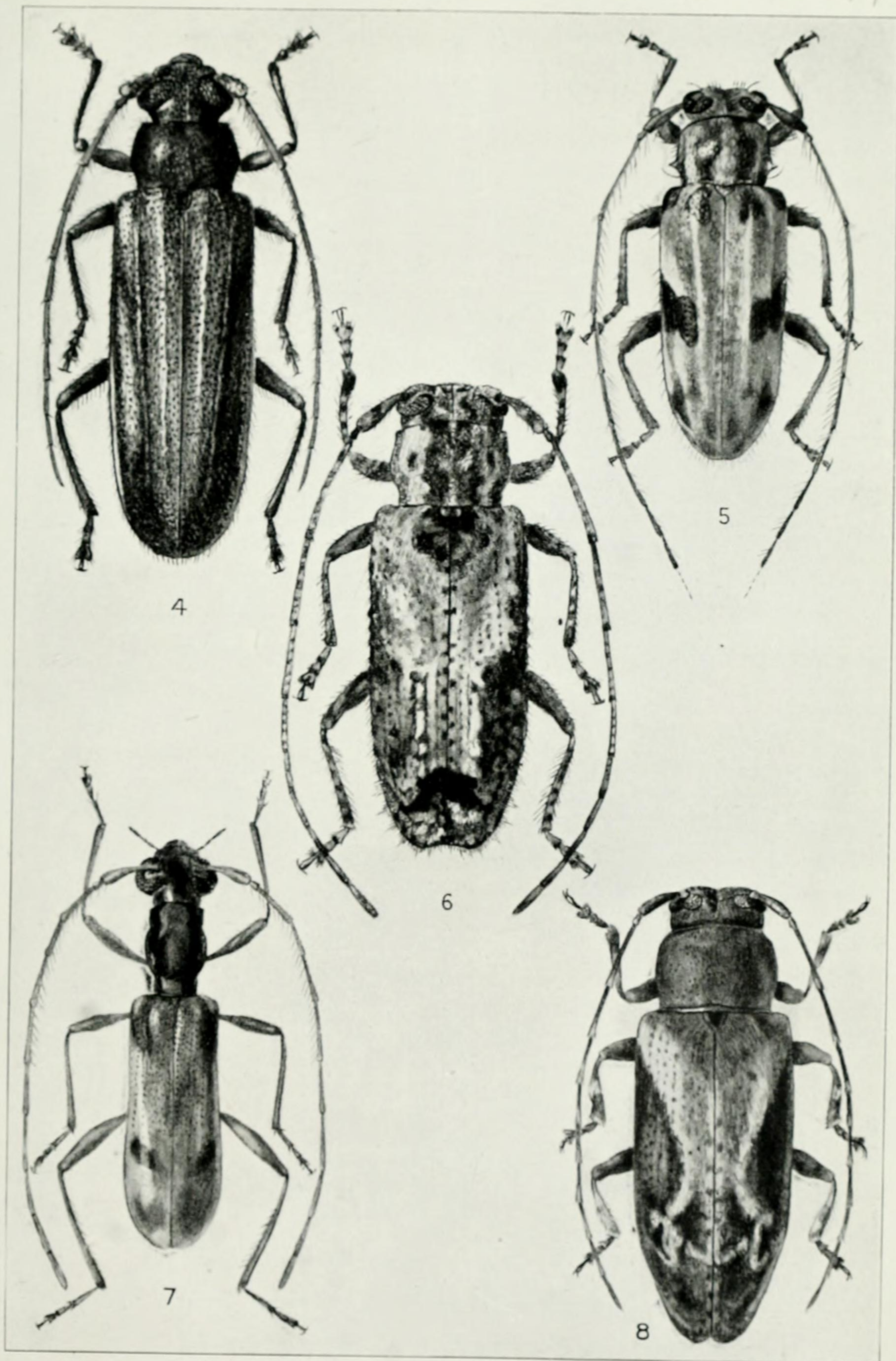


442-9

*Miss O. F. Tassart del.*

CERAMBYCIDÆ FROM THE SEYCHELLES.





Miss O. F. Tassart del.

CERAMBYCIDÆ FROM THE SEYCHELLES AND RODRIGUEZ.



at apex. *Elytra* cylindrical, with fine and short erect setæ; each rounded at apex and with three fine elevated lines, two on the disc and one at the margin (humeral). *Legs* short; femora moderately thickened; first joint of hind tarsi shorter than the second and third united.

This new genus seems to agree in many of its characters with *Enes*, Pasc., but differs especially in the elongate third joint of its antennæ.

32. *Mahenes semifasciata*, sp. n. (Pl. XIII. fig. 5.)

Testaceous-brown, clothed with a rather dense, pale greyish tomentum and ornamented with dark brown markings; head unicolorous; antennæ fuscous at tip and with the first joint also darkened at apex; prothorax finely punctured, with the sides and two broad discal longitudinal bands fuscous-brown; elytra finely and irregularly punctured (the punctures showing a tendency to an arrangement in rows), pale greyish with the humeral callus, a slightly elevated spot on each side of the scutellum, a broad oblique fascia in the middle of each side, not reaching the suture, and some irregular, often obsolete, subapical and sutural spots, blackish or brown and nearly denudate; a patch on the femora, the apical half of the tibiæ and the tarsi also more or less fuscous. Length 4-6 mm.

*Loc.* Seychelles: Silhouette, Mahé, Long I. Silhouette: Mare aux Cochons or forest above, over 1000 feet, ix. 1908, 2 examples. Mahé: near Morne Blanc, about 1000 feet, xi. 1908, 1 specimen, and Cascade Estate, about 1000 feet, i. 1909, 1 specimen. Long I., vii. 1908, 1 example.

EXPLANATION OF THE PLATES.

PLATE XII.

- Fig. 1.* *Micronæmia albosignata*, gen. et sp. n. (Seychelles),  $\times 10$ .  
*Fig. 2.* *Micronæmia bifasciata*, sp. n. (Seychelles),  $\times 10$ .  
*Fig. 3.* *Idobrium sechellarum*, sp. n. (Seychelles),  $\times 10$  (a rather dark example).

PLATE XIII.

- Fig. 4.* *Paradandamis fuscovittata*, gen. et sp. n. (Seychelles),  $\times 4$ .  
*Fig. 5.* *Mahenes semifasciata*, gen. et sp. n. (Seychelles),  $\times 8$ .  
*Fig. 6.* *Mimecyrida fasciculata*, gen. et sp. n. (Rodriguez),  $\times 6$ .  
*Fig. 7.* *Obrium nitidicolle*, sp. n. (Seychelles),  $\times 8$ .  
*Fig. 8.* *Pterolophia instabilis*, sp. n., typical form (Seychelles),  $\times 10$ .