

The Cerambycidae Collected on Pohnpei (Ponape) Island, Micronesia,
with Reference to Individual Variation
of *Paremeopedus minimus*

Ryûtarô IWATA

Forest Zoology Laboratory, Department of Forest Science and Resources,
College of Bioresource Sciences, Nihon University,
Fujisawa, 252–8510 Japan

Although the cerambycid fauna of Japan, including the Bonin Islands, has been almost completely clarified, that of Micronesia, consisting of numerous islands, still needs survey since the publication of GRESSITT's (1956) monograph; very little works have been published thereafter (BREUNING, 1983; IWATA, 1993; SAITO, 1994). This is to report the result of study on the cerambycid collected on Pohnpei (Ponape) Island, the Federated States of Micronesia, on Dec. 19–21, 1991. All the specimens were collected by me and my family, and deposited in my collection.

Family Cerambycidae

Sybra convexa GRESSITT

1 ♂, 1 ♀, from Kolonia to Nett, 20–XII–1991.

Sybra ponapensis BLAIR

1 ♂, 1 ♀, Nett, 19–XII–1991; 1 ♂, 2 ♀♀, Nett, 20–XII–1991; 1 ♀, from Nett to Nanpil Waterfall, 20–XII–1991; 1 ♂, 3 ♀♀, from Kolonia to Nett, 20–XII–1991.

Sciades (Acanthosciades) latispina (GRESSITT)

1 ♂, 1 ♀, Nett, 19–XII–1991; 1 ♂, from Kolonia to Sokehs, 19–XII–1991; 1 ♂, 2 ♀♀, Sokehs, 19–XII–1991; 1 ♂, 3 ♀♀, Tomorolong, 19–XII–1991; 1 ♂, 2 ♀♀, from Nett to Nanpil Waterfall, 20–XII–1991; 9 ♂♂, 2 ♀♀, from Kolonia to Nett, 20–XII–1991; 6 ♂♂, 1 ♀, Kolonia, 21–XII–1991.

The male of this species has a very outstanding double-cusped spine on each elytron (Fig. 1), which seems to be allometric. Also, larger individuals are always males, not females. These strongly suggest a peculiar system of mating behavior in this species, the spines presumably being used to grasp female body.

Sciades (Micronesiella) townesi (GRESSITT)

1 ex., Sokehs, 19–XII–1991; 2 exs., Nett, 19–XII–1991; 5 exs., Tomorolong, 19–XII–1991; 3 exs., from Nett to Nanpil Waterfall, 20–XII–1991; 9 exs., from Kolonia to Nett, 20–XII–1991; 6 exs., Kolonia, 21–XII–1991.

Paremeopedus minimus (BLAIR)

2 exs., Nett, 19–XII–1991; 4 exs., Sokehs, 19–XII–1991; 2 exs., Tomorolong, 19–XII–1991; 9 exs., from Nett to Nanpil Waterfall, 20–XII–1991; 3 exs., Nett, 20–XII–1991; 44

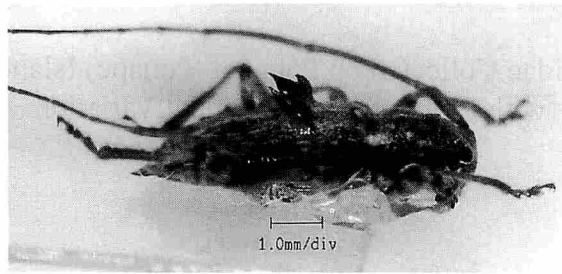
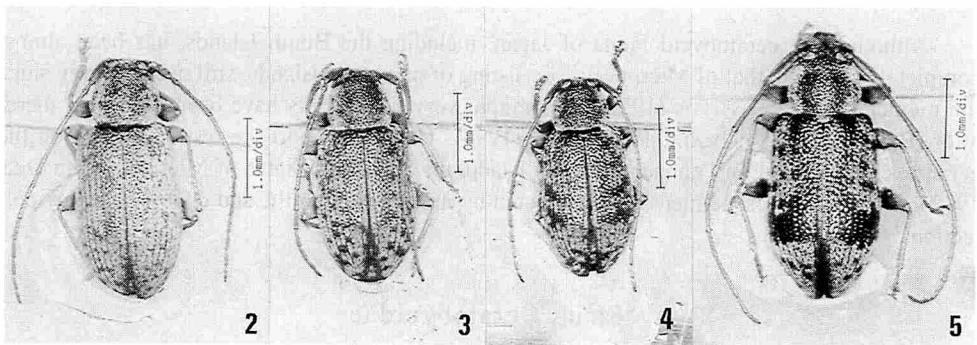


Fig. 1. Male of *Sciades (Acanthosciades) latispina* (GRESSITT), showing spines on the elytra (scale: 1 mm).



Figs. 2-5. Individual variation of *Paremeopedus minimus* (BLAIR) (scale: 1 mm).

exs., from Kolonia to Nett, 20-XII-1991; 1 ex., Kolonia, 21-XII-1991.

Since individual variation of the elytral patterns of this species is considerable, and since this has not been shown in detail, some examples are presented in Figs. 2-5.

References

- BREUNING, S., 1983. Nouvelles formes de Lamiinae de l'Ouest du Pacifique, récoltés par le Dr. Peter SCHURMANN. *Bull. Soc. ent. Mulhouse*, **1983**: 31.
- GRESSITT, J. L., 1956. Insects of Micronesia. Coleoptera: Cerambycidae. *Ins. Micronesia*, B. P. Bishop Mus., Honolulu, **17**: 61-183.
- IWATA, R., 1993. Records of cerambycids from the Mariana Islands, Micronesia, with description of a new species of the genus *Sybra* (Coleoptera: Cerambycidae: Lamiinae). *Pan-Pacif. Entomol.*, **69**: 149-154.
- SAITO, A., 1994. Records of some Cerambycidae (Insecta: Coleoptera) from the Northern Mariana Islands, Micronesia. *Nat. Hist. Res., Spec. Iss., Chiba*, (1): 227-228.

The Cerambycidae Collected on the Belau (Palau) Islands, Micronesia

Ryûtarô IWATA

Forest Zoology Laboratory, Department of Forest Science and Resources,
College of Bioresource Sciences, Nihon University,
Fujisawa, 252–8510 Japan

Following my cerambycid-collecting trip to Pohnpei, Micronesia, in 1991 (IWATA, 2000), I had an opportunity to visit the Belau (Palau) Islands, Micronesia, on Jan. 4–6, 1994 to collect the following cerambycids. All the specimens were collected by me and deposited in my collection.

Family Cerambycidae

Prosoplus lividus MATSUSHITA

1 ♂, Hotel Nikko, Koror Is. (at light), 4–I–1994.

Ropica squamulosa BREUNING

3 exs., Hotel Nikko, Koror Is. (at light), 4–I–1994; 2 exs., ditto (at light), 5–I–1994.

Ropica palauana (MATSUSHITA)

2 exs., Hotel Nikko, Koror Is. (at light), 5–I–1994; 6 exs., ditto, 6–I–1994.

This species is fairly variable in its elytral pattern as shown by GRESSITT (1956).

Sybra alternans (WIEDEMANN)

1 ♀, National Museum, Koror Is., 5–I–1994.

Sybra oreora GRESSITT

1 ♂, Palau International Airport, Babelthuap Is., 6–I–1994.

Acalolepta magnetica auripilis (MATSUSHITA)

1 ♀, Hotel Nikko, Koror Is. (at light), 4–I–1994; 1 ♂, 1 ♀, ditto (at light), 5–I–1994.

Batocera oceanica SCHWARZER

1 ♀, Hotel Nikko, Koror Is. (at light), 4–I–1994.

Sciades (Micronesiella) palauicola (GRESSITT)

1 ex., Ngercheu Is. (“Carp Is.”) (new locality), 4–I–1994; 1 ex., Ngardmau Waterfalls, Babelthuap Is., 5–I–1994; 4 exs., Hotel Nikko, Koror Is., 6–I–1994; 2 exs., Palau International Airport, Babelthuap Is., 6–I–1994.

References

- GRESSITT, J. L., 1956. Insects of Micronesia. Coleoptera: Cerambycidae. *Ins. Micronesia*, B. P. Bishop Mus., Honolulu, **17**: 61–183.
- IWATA, R., 2000. The Cerambycidae collected on Pohnpei (Ponape) Island, Micronesia, with reference to individual variation of *Paremeopedus minimus*. *Elytra, Tokyo*, **28**: 443–444.

The Cerambycidae Collected on the Chuuk (Truk) Islands, Micronesia

Ryûtarô IWATA

Forest Zoology Laboratory, Department of Forest Science and Resources,
College of Bioresource Sciences, Nihon University,
Fujisawa, 252-8510 Japan

Following my cerambycid-collecting trips to Pohnpei in 1991 (IWATA, 2000 a) and to Belau in 1994 (IWATA, 2000 b), I had an opportunity to visit the Chuuk (Truk) Islands, Micronesia, on Jan. 5–7, 1995 to collect the following cerambycids. All the specimens were collected by me and my family, and are deposited in my collection.

Family Cerambycidae

Ropica squamulosa BREUNING

1 ♂, Mwan, Weno (Moen) Is., 5–I–1995; 2 ♀ ♀, Fanip, Fefan Is. (new locality), 6–I–1995; 1 ♀, Enin, Tonoas (Dublon) Is. (new locality), 6–I–1995; 1 ♀, from Tunnuk to Wonip, Udot Is. (new locality), 7–I–1995; 1 ♂, Neauo, Weno (Moen) Is., 7–I–1995.

Sybra ponapensis BLAIR

1 ♂, 1 ♀, Mwan, Weno (Moen) Is., 5–I–1995; 2 ♀ ♀, Mt. Tonachau, Weno (Moen) Is., 5–I–1995; 1 ♀, Fanip, Fefan Is., 6–I–1995; 1 ♂, 3 ♀ ♀, Sapeta, Fefan Is., 6–I–1995; 1 ♀, Enin, Tonoas (Dublon) Is., 6–I–1995; 4 ♀ ♀, from Tunnuk to Wonip, Udot Is., 7–I–1995; 1 ♀, Neauo, Weno (Moen) Is., 7–I–1995.

Sciades (Estoliops) aureopleura (GRESSITT)

1 ♀, Neauo, Weno (Moen) Is., 7–I–1995.

Sciades (Estoliops) argentepleura (GRESSITT)

1 ♂, 1 ♀, Mt. Tonachau, Weno (Moen) Is., 5–I–1995.

Paremeopedus minimus (BLAIR)

2 exs., Mwan, Weno (Moen) Is., 5–I–1995; 6 exs., Mt. Tonachau, Weno (Moen) Is., 5–I–1995; 6 exs., Fanip, Fefan Is., 6–I–1995; 11 exs., Sapeta, Fefan Is., 6–I–1995; 24 exs., from Tunnuk to Wonip, Udot Is. (new locality), 7–I–1995; 11 exs., Neauo, Weno (Moen) Is., 7–I–1995.

As compared with those collected on Pohnpei Is. (IWATA, 2000 a), the specimens from the population of this island group tend to be paler in elytral color.

References

- IWATA, R., 2000 a. The Cerambycidae collected on Pohnpei (Ponape) Island, Micronesia, with reference to individual variation of *Paremeopedus minimus*. *Elytra, Tokyo*, **28**: 443–444.
——— 2000 b. The Cerambycidae collected on the Belau (Palau) Islands, Micronesia. *Ibid.*, **28**: 445.