



Entomofauna

ZEITSCHRIFT FÜR ENTOMOLOGIE

Band 19, Heft 17: 277-284

ISSN 0250-4413

Ansfelden, 30. Juni 1998

**Description of two new species
of the genus *Osphryon* Pascoe, 1869
from New Guinea
(Coleoptera, Cerambycidae, Prioninae)**

Ulf NYLANDER

Abstract

Two new species of the genus *Osphryon* PASCOE, 1869 (Coleoptera, Cerambycidae, Prioninae) are described and figured: *Osphryon bispinosus* sp. nov. and *Osphryon wauensis* sp. nov. A key for the twelve known species of the genus is added.

Zusammenfassung

Zwei neue Arten der Gattung *Osphryon* PASCOE, 1869 (Coleoptera, Cerambycidae, Prioninae) werden beschrieben und abgebildet: *Osphryon bispinosus* sp. nov. und *Osphryon wauensis* sp. nov. Ein Bestimmungsschlüssel für die Arten der Gattung wird erstellt.

Introduction

The genus *Osphryon* was described by PASCOE 1869 together with the description of *Osphryon adustus* from New Guinea, Dorey. 1894 GAHAN described two more species: *Osphryon hirticollis* from New Guinea, Dorey and Afrah, and *Osphryon forbesi*, New Guinea, Sattelberg. SCHWARZER described 1924 *Osphryon spiniscapus* from a male which had been found at Doormanpadvivak at an altitude of 1400 m by an expedition 1920 to N.W. New Guinea. AURIVILLIUS described 1926 *Osphryon granuliger* from a male found in the Bolan Mountains, New Guinea. *Osphryon pallidipennis* was described by GRESSITT 1951 from a specimen which had been found 1936 near Fly River, Papua New Guinea. In his work on New Guinean Cerambycidae 1959, in the series "Pacific Insects", he described four more new species, e.g.: *Osphryon woodlarkensis* from the island Woodlark,

east of Papua New Guinea, *Osphryon subitanus* from Papua New Guinea, *Osphryon sudestus* from the island Sudest, also near of Papua New Guinea, and *Osphryon tridentatus* from the island New Britain. In his work he also published a determination key of the ten known species of the genus *Osphryon*, which all are known from New Guinea and adjacent islands. The key was based upon the species he had and on the original descriptions of the other six species. Since now two more species of this genus are known it should be appropriate to include them in a revised key.

The biology of the species of the genus *Osphryon* is not yet known.

To the courtesy of Dr. Bert GUSTAVSSON at the Naturhistoriska Riksmuseet, Stockholm I have had the opportunity to examine three specimens preserved there, e.g. the holotype of *Osphryon granuliger*, a male of *Osphryon woodlarkensis*, and a male of *Osphryon forbesi*. Of that reason I am now able to publish photos of these three species together with photos of the holotype of *Osphryon bispinosus* sp. nov. and of the holotype and paratype of *Osphryon wauensis* sp. nov.

Osphryon bispinosus sp. nov.

Female: Dark brown, paler on posterior half of elytrae. Head and pronotum darker. Head with dense fringe of brown-golden hair on anterior margin of clypeus. Pronotum with rather dense pubescence of golden-brown hair at the margins and more sparsely pubescence above. Scutellum and elytrae glabrous. Head much narrower than pronotum with a deep Y-formed depression between the antennal insertions and the upper parts of the lobes of the eyes and followed by a deep groove. Head moderately punctured. Antennae reaching to about the beginning of apical 1/3 of elytrae (the holotype lacks segment 10 and 11). Scape moderately stout distally, finely punctured, nearly as long as the fourth segment. Segment two very short, segment three 1,4 as long as the fourth. The fifth a little shorter than the fourth and of about the same length as the following segments. Fourth segment and the following a little flattened and with fine striae and carinae at apex, not toothed or spined. Prothorax 1,7 as broad as long, with two teeth at each side. The first at the anterior border and directed somewhat anteriorly. The posterior tooth is the longest one and situated 1/3 of the prothorax length from the base and directed somewhat posteriorly. Scutellum subtriangular with rounded apex. Elytrae 2,5 as long as head and prothorax together, successively narrowing posteriorly. Legs with hind femora hardly reaching beyond middle of the abdomen, tarsi rather short.

Holotype: Female, in the collection of the author, collected at Okapa, Papua New Guinea 1990 in December. Length 37 mm, width 12 mm.

Osphryon bispinosus sp. nov. will easily be distinguished as it is the only species in this genus with only two spines at each side of the prothorax.

Osphryon wauensis sp. nov.

Dark brown, elytrae more testaceous at the distal two thirds. Body nearly glabrous above; only short brown-golden pubescence on clypeus and behind the eyes as well as on the margins of the prothorax and scattered pubescence on the disc of pronotum. Scutellum and elytrae glabrous. Head distinctly narrower than the prothorax with a deep triangular depression between the antennal insertions and the anterior part of the eyes. This depression is continuing in a deep and rather broad groove between the eye lobes and over the vertex. Prothorax one-half as long as broad with four distinct and sharp spines at each side, the posterior one the longest. The disc with moderately dense punctuation. Scutellum semitriangular with rounded apex. Elytrae 2,5 as long as broad, subparallel; finely

granulose at the anterior fourth and at the suture to the middle. Apex rounded with a distinct sutural spine and a small lateral tooth.

Antennae reaching to just behind the middle of the body. The scape as long as the fourth segment, subtriangular; the second segment very short and the third almost double as long as the fourth, closely punctured. The fourth and the following segments of approximately the same length.

This species has antennal segments rounded apically and differs from *O. tridentatus*, *O. sudetus*, *O. woodlarkensis*, *O. forbesi*, and *O. subitus*, which all have toothed apical segments. From *O. spiniscapus* it differs by unspined scape; from *O. bispinosus* sp. nov. by having four teeth at each side of prothorax; from *O. pallidipennis* by antennal segment 3 more than twice as long as the fourth and by elytral apex with both sutural and a small lateral spine, and from *O. adustus* by more pronounced yellow-brown pubescence on head and prothorax and by lateral spine at elytral apex. *O. granuliger* has 3 teeth at each side of the prothorax and is darker and has more dense and tawny pubescence on head and pronotum and scutellum. *O. granuliger* has a more pronounced fine granulation of elytrae compared with *O. wauensis* sp. nov. *O. adustus* differs from *O. wauensis* sp. nov. in having the antennal segment 3 almost three times as long as the fourth and the elytral apex is lacking the lateral tooth.

Holotype: Female, 50 mm long and width 16 mm, collected at Wau, Morobe Province, Papua New Guinea in February 1991. Paratype: Female, 53 mm long and width 17mm, collected at Bulolo, Morobe Province, Papua New Guinea in March 1993. It differs from the holotype in very short teeth 2 and 3 and a long 4th tooth at each side of the pronotum. The types are preserved in the collection of the author.

Figures (p. 280-282)

- Fig. 1: *Osphryon bispinosus* sp. nov. holotype; habitus.
Fig. 2: *Osphryon bispinosus* sp. nov. anterior half.
Fig. 3: *Osphryon wauensis* sp. nov. holotype; habitus.
Fig. 4: *Osphryon wauensis* sp. nov. holotype; anterior half.
Fig. 5: *Osphryon wauensis* sp. nov. paratype.
Fig. 6: *Osphryon granuliger* AURIVILLIUS, 1926 holotype, Bolan Gebirge, Neu Guinea; habitus.
Fig. 7: *Osphryon granuliger* AURIVILLIUS, 1926 holotype; anterior half.
Fig. 8: *Osphryon forbesi* GAHAN, 1869, Bolan Gebirge, Neu Guinea; habitus.
Fig. 9: *Osphryon forbesi* GAHAN, 1869, Bolan Gebirge, Neu Guinea; anterior half.
Fig. 10: *Osphryon woodlarkensis* GRESSITT, 1959, Woodlak Insel; habitus.
Fig. 11: *Osphryon woodlarkensis* GRESSITT, 1959, Woodlark Insel; anterior half.





Fig. 5

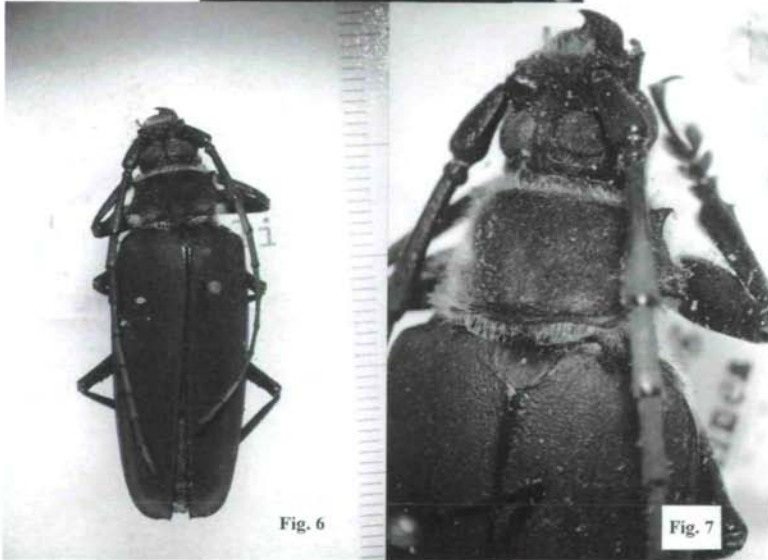
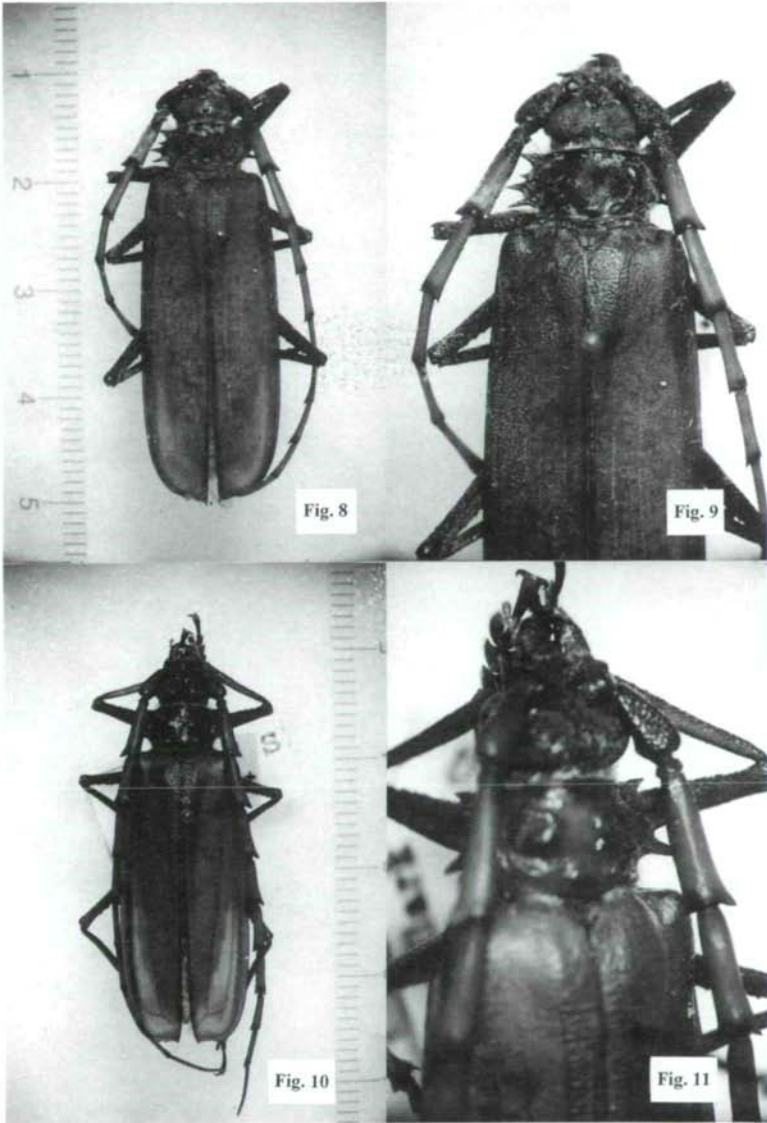


Fig. 6

Fig. 7



Key to the species of the genus *Osphryon* PASCOE, 1869

- 1 Scape unspined 2
- Scape spined *spiniscapus* SCHWARZER, 1924
- 2 Antennal segments rounded apically, not toothed 3
- Antennal segments 3-10 with apical teeth 6
- 3 Prothorax at each side with 4 teeth 4
- Prothorax at each side with 3 teeth 5
- Prothorax at each side with 2 teeth *bispinosus* sp. nov.
- 4 Antennal segment 3 not quite one half again as long as fourth. Elytral apex with only a sutural spine. Elytral borders slightly darker, else pale testaceous 5
- *pallidipennis* GRESSITT, 1951
- Antennal segment 3 more than twice as long as fourth, elytrae dark brown, apex with a distinct sutural spine and a small lateral spine. Elytrae finely granulose. Head and pronotum with yellow-brown hairs. Distinct space between the eyes. Larger species, about 50 mm *wauensis* sp. nov.
- Antennal segment 3 almost three times as long as fourth. Elytral apex with only a sutural spine. Head and pronotum very sparsely pubescent. Eyes very close above 6
- *adustus* PASCOE, 1869
- 5 Blackish brown. Head and pronotum with rather dense yellow-brown pubescence. Elytrae finely granulose *granuliger* AURIVILLIUS, 1926
- Elytrae densely punctured, yellowish testaceous, along the suture and the outer margin darker. Head and prothorax clothed both above and below with a rather dense tawny brown pubescence *hirticollis* GAHAN, 1894
- 6 Prothorax with 3 teeth at each side. Antennal segment 3 punctured on basal 2/5, strongly striate in distal 3/5. Elytral apex subtruncate with only a feeble oblique tooth at sutural angle. Ridge parallel to suture, extending almost to apex 7
- *tridentatus* GRESSITT, 1959
- Prothorax with 4 teeth at each side 7
- 7 Pronotum glabrous or nearly so, pronotum and scutellar area of elytron generally granulose 8
- Pronotum distinctly pubescent; pronotum and scutellar area of elytron distinctly punctured; ridge parallel to elytral suture, extending to just behind middle 8
- *sudestus* GRESSITT, 1959
- 8 Ridge parallel to elytral suture, not extending to beyond middle of elytron. Pronotum primarily granulose 9
- Ridge parallel to elytral suture, extending to beyond middle of elytron. Pronotum distinctly punctured with hardly any granules. rarely with a few hairs on disc 9
- *woodlarkensis* GRESSITT, 1959
- 9 Antennae largely reddish and with many distinct fine carinae beyond base of segment 3 *forbesi* GAHAN, 1869
- Antennae dull, pitchy on basal segments with almost no fine carinae 9
- *subitanus* GRESSITT, 1959

Acknowledgements

I am very thankful to Mr. Peter CLARK and Mr. Alan LANDFORD, Bulolo Papua New Guinea, who have provided me with the specimens and collecting data of the new species now described. Dr. Bert GUSTAVSSON and his staff at the Naturhistoriska Riksmuseet, Stockholm has kindly given me access to the collections preserved at the museum and made it possible for me to take photos of available *Osphryon*-specimens. To Dr. Karl-Ernst HÜDEPOHL I wish to express my gratitude for invaluable support and for reviewing the manuscript.

References

- PASCOE, F.P. - 1869. *Longicornia Malayana*. - Ent. Soc. London Trans., Ser. 3, 3: 662-663, Pl. 23 fig 2.
GAHAN, C.J. - 1894. *Longicorn Coleoptera from New Guinea*. - Ann. Mag. Nat. Hist., Ser. 6, 13: 288-290.
SCHWARZER, B. - 1924. *Neue Cerambyciden aus New-Guinea*. - Nova Guinea 15: 57.
AURIVILLIUS, C. - 1926. *Neue oder wenig bekannte Coleoptera, Longicornia*. - Ark. Zool. 18A(9)3.
GRESSITT, J.L. - 1951. *Longicorn Beetles from New Guinea and The South Pacific*. - Ent. Soc. Amer., Ann. 44: 2-3.
GRESSITT, J.L. - 1959. *Longicorn Beetles from New Guinea, I (Cerambycidae)*. - Pacific Insects 1 (1): 73-79.

Author's address:
Dr. Ulf NYLANDER
Åsvägen 15
S-81833 Valbo
Sweden

Druck, Eigentümer, Herausgeber, Verleger und für den Inhalt verantwortlich:
Maximilian SCHWARZ, Konsulent für Wissenschaft der O.Ö. Landesregierung,
Eibenweg 6, A-4052 Ansfelden
Redaktion: Erich DILLER (ZSM), Münchhausenstrasse 21, D-81247 München, Tel.(089)8107-159
Fritz GUSENLEITNER, Lungitzerstrasse 51, A-4222 St. Georgen / Gusen
Wolfgang SCHACHT, Scherrerstrasse 8, D-82296 Schöngeising, Tel. (089) 8107-146
Erika SCHARNHOP, Himbeerschlag 2, D-80935 München, Tel. (089) 8107-102
Johannes SCHUBERTH, Bauschingerstrasse 7, D-80997 München, Tel. (089) 8107-160
Emma SCHWARZ, Eibenweg 6, A-4052 Ansfelden
Thomas WITT, Tengstraße 33, D-80796 München
Postadresse: Entomofauna (ZSM), Münchhausenstrasse 21, D-81247 München, Tel.(089) 8107-0,
Fax (089) 8107-300