

<i>Travaux du Muséum National d'Histoire Naturelle «Grigore Antipa»</i>	Vol. XLIX	pp. 203–238	© Octobre 2006
---	-----------	-------------	-------------------

**THE CATALOGUE OF THE PALAEARCTIC SPECIES OF
LEPTURINAE (COLEOPTERA: CERAMBYCIDAE) FROM THE
PATRIMONY OF „GRIGORE ANTIPA” NATIONAL MUSEUM
OF NATURAL HISTORY (BUCHAREST) (Part II)**

RODICA SERAFIM

To Dr. Nicolae Săvulescu's memory

Abstract. The catalogue consists of data on 53 Palaeartic Cerambycidae coleopteran species of the subfamily Lepturinae, tribe Lepturini, preserved in the collections of „Grigore Antipa” National Museum of Natural History of Bucharest.

Résumé. Le catalogue présente des données sur 53 espèces de coléoptères paléartiques de Cerambycidae, sousfamille Lepturinae, tribu Lepturini, préservés dans les collections du Muséum National d'Histoire Naturelle „Grigore Antipa“ de Bucarest.

Key words: Coleoptera, Cerambycidae, catalogue, collections, “Grigore Antipa” National Museum of Natural History, Bucharest.

In the first part of the Catalogue of the Cerambycidae species preserved in “Grigore Antipa” National Museum of Natural History (Bucharest), data concerning 25 species of the subfamilies Prioninae (tribes Prionini and Aegosomatini) and Lepturinae (tribes Oxymirini, Xylosteini, Rhamnusiini and Rhagiini) were published (Serafim, 2005).

In the second part, 53 Palaeartic species of the subfamily Lepturinae, tribe Lepturini, are presented.

The collection consists of:

- material from the old coleopteran collection from the Palaeartic area (which gather specimens from Richard Canisius, Deszö Kenderessy, Eduard Fleck, Fridrich Deubel, Arnold Lucien Montandon collections, acquired between 1883 – 1923) (3.20%);

- material from Dr. Nicolae Săvulescu's collection acquired between 1961 – 1982;

- material from the same collection, which were included in the Museum patrimony in 1992, after Dr. Nicolae Săvulescu's death (both of them 39.65%);

- specimens obtained by echange with foreign specialists and collectors (1.87%);

- material collected in the field by the specialists of the Museum and by their collaborators, during 1945 – 2005 (55.28%).

A large part of the information given by the specimens from the collections was evaluated by scientific papers.

English translation by Mihaela Barcan Achim.

The first data on the material of the old collections, which belong now to the Museum patrimony, were published by Montandon (1884, 1906) and Fleck (1905).

Panin and Săvulescu (1961) evaluated the material collected till 1960, in the fascicle of Romanian fauna.

Cerambycidae collections obviously developed after 1961. The first stage of their development was the acquisition of a part of Dr. Nicolae Săvulescu's collection, in 1961. This first lot included most of the material which was the base of the fauna fascicle (Panin & Săvulescu, 1961). In 1978, 1979 and 1982, other 3 parts were acquired, whose data were not published entirely since now.

Collections developed by collecting material in Romania, during the numerous field trips made by the specialists of the Department of Entomology and their collaborators. From the studied areas I mention the Danube Delta, Dobrogea, Vrancea County, the Romanian Plain, Satu Mare County, Maramureş County, Banat, Piatra Craiului Mountains, Făgăraş Mountains, and others. A part of the data were published by Negru & Roşca (1967), Serafim (1985, 1993, 1997 a, b, 1998, 1999, 2004, 2005, 2006), Serafim & Maican (2003, 2004).

After Dr. Nicolae Săvulescu's death, in 1992, his collection (the unsold part) was given to the Museum. Now, the material is in study (a part of it being presented in this catalogue).

The catalogue presents 53 Palaearctic Cerambycidae species of the subfamily Lepturinae (tribe Lepturini) represented by 8327 specimens. Most part of the material originates in Romania. In collection, also there is material from France (*Anastrangalia dubia*, *A. sanguinolenta*, *Anoplodera sexguttata*, *Grammoptera abdominalis*, *G. ustulata*, *Paracorymbia fulva*, *P. maculicornis*, *Pseudovadonia livida*, *Rutpela maculata*, *Stenurella bifasciata*, *S. nigra*, *Stictoleptura cordigera*, *Vadonia unipunctata*), Italy (*Grammoptera ruficornis*, *Stenurella melanura*), Croatia (*Pedostrangalia verticalis*), Bulgaria (*Pedostrangalia verticalis*), Hungary (*Stenurella nigra*, *Vadonia unipunctata*), Japan (*Leptura annularis*). Most of the species of the tribe Lepturini, belonging to the Romanian fauna (42 out of the 47 reported ones), are included in the Museum collection. *Grammoptera abdominalis*, reported for the Romanian fauna, is represented by a material collected from France. Also, seven East-Palaearctic species (originating in Japan), as well as the Iberic species *Paracorymbia stragulata* belong to the collection.

Nomenclature and systematical order are according to those used by Sama (2004) in "Fauna Europaea" and Danilevsky (2004) in the systematic list of European Cerambycidae.

Abbreviations

Mountain/s – Mt./Mts; MGAB – Muzeul Național de Istorie Naturală „Grigore Antipa” („Grigore Antipa” National Museum of Natural History); Pref. – Prefecture; spec. (s) – specimen (s); forest house – f. h.; laboratory house – l. h.

Collectors' name:

A.I. – Andreescu Ioana; A.V. – Andreescu Vasile; A.G. – Andrei Gabriela; A.M. – Andrei Mircea; B.C. – Ban Cristina; B.M. – Băcescu Mihai; B.P. – Berger P.; B.G. – Boguleanu Gheorghe; B.V. – Brădescu Vladimir; C.I. – Cacoveanu Ioana; C.R. – Canisius Richard; C.Io. – Căpușă Iosif; C.S. – Chelmuș S.; C.G. – Chișamera Gabriel; C.A. – Constantinescu Alin; D.Fr. – Deubel Fridrich; D.L. – Dioszeghy Laszlo; D.I. – Drăghia Ion; D.D. – Dumitrescu Dan; D.A. – Dumitru Angelica; F.Ed. – Fleck Eduard; G.N. – Gâldean Nicolae; G.P. – Garagnani P.; G.V. – Gheorghiu Victor; H.L. – Heyrovsky Leo; H.C. – Hoinic Cristina; I.A. – Igna A.; I.N. – Inahara N.; I.Z. – Iszák Zoltan; K.D. – Kenderessy Deszö; K.V. – Kurnakov V.; L.G. – Ledoux George; L.D. – Lupu Dochița; M.S. – Maican Sanda; M.A.L. – Montandon Arnold Lucien; M.I. – Matache Ioana; M.M. – Matache Mihaela; M.P.B. –

Matei Petre Bogdan; N.C. - Nagler Carol; N.I. - Nemeş Ioan; N.S. - Negru Ştefan; N.G. - Nicolae Gheorghe; O.S. - Ogura S.; P.M. - Paspaleva Maria; P.D. - Pârvescu D.; P.C. - Pârveu Corneliu; P.A. - Petrescu Angela; P.An. - Petrişor Angela; P.E. - Pistică Elena; Po.C. - Podány C.; P.G.A. - Popescu-Gorj Aurelian; P.S.M. - Procheş Şerban Mihai; R.I.V. - Raica Iuga Victoria; R.P. - Rapuzzi Pierpaolo; R.N. - Răduleţ Năstase; R.J. - Renault J.; R.G. - Romanca George; R.A. - Roşca Atena; R.E. - Rusu Elena; R.D. - Ruşti Dorel; S.F. - Salay Franz; S.N. - Săvulescu Nicolae; S.D. - Scăunaşu Dragoş; S.P.X. - Scobiola Palade Xenia; S.R. - Serafim Rodica; S.I. - Sienkiewicz Igor; S.A. - Stănescu Aurora; S.M. - Stănescu Mihaela; S.Mi. - Stănescu Mihai; S.Me. - Stan Melania; S.I. - Stănoiu Ion; S.L. - Szekely Levente; T.A. - Takacs Adalbert; N.T. - Nalbant Teodor; T.E. - Teleki E.; V.B. - Vasilescu B.; V.M. - Vasiliu M.; V.A. - Văraru Adriana; W.M. - Weinberg Medeea; W.R. - Weyrauch R.; W.E. - Worell Eugen.

MATERIAL

Family Cerambycidae

Subfamily Lepturinae

Tribe Lepturini

Alosterna Mulsant, 1863

Alosterna tabacicolor (Degeer, 1775)

(syn. *bicoloripes* Pic, 1914)

1 spec. Brăneşti, Pasărea forest, 14.05.1952, S.N.; 1 spec. Pojoga, 7.06.1955, S.N.; 1 spec. Târgu Mureş, 14.06.1956, S.N.; 1 spec. Băile Herculane, 23.07.1956, S.N.; 1 spec. Retezat Mts, 27.08.1956, S.N.; 1 spec. Făgăraş Mts, Gura Apei, 28.07.1956, S.N.; 5 specs Făgăraş Mts, Buda Peak, 12-21.08.1959, S.N.; 9 specs Făgăraş Mts, Capra Peak, 17.08.1959, S.N.; 7 specs Făgăraş Mts, Otic Peak, 15.08.1959, S.N.; 2 specs Săcel, Izvorul Albastru al Izei, 9.07.1995, H.C.; 1 spec. National Park “Pietrosul Rodnei” (Laboratory house, 1370 m), 11.VII.1995, M.I.; 1 spec. Piatra Craiului Mts, Râioasa Valley, 7.06.2000, P.C.; 8 specs Piatra Craiului Mts, Crăpătura Valley, 8.06.2000, P.C.; 3 specs Piatra Craiului Mts, Bârsa Groşetului Valley, 9.06.2000 P.C.; 7 specs Piatra Craiului Mts, Diana rivulet, 10.06.2000, P.C.; 1 spec. Piatra Craiului Mts, Sătic, Zăpodia Valley, 5.07.2000, P.C.; 1 spec. Piatra Craiului Mts, Drăgoslăveni Valley, 8.08.2000, P.C.; 4 specs Piatra Craiului Mts, Gura Bârsei chalet, 10.06.2000, P.C., 14.06.2001, P.C., 1.06.2002, P.C.; 1 spec. Piatra Craiului Mts, Bârsa Fierului, 12.05.2001, P.C.; 10 specs Piatra Craiului Mts, Valea lui Ivan, 27.06.2002, P.C.; 1 spec. Piatra Craiului Mts, Sătic, Valea Lungă, 29.06.2002, P.C.; 1 spec. Maramureş Mts, the confluence of the Rica with Coşnea rivers, Poienile de sub Munte, 15.06.2003, S.R.; 3 specs valley of Cvaşniţa river, 6 km upstream Coşnea f. h., Poienile de sub Munte, 16.06.2003, P.C.; 1 spec. valley of Pop Ivan river, 10 km upstream Crasna Vişeuului, 17.06.2003, S.R.; 2 specs Ţibleş Mts, valley of Şandra river, Sălişte, 23.06.2003, P.C.; 3 specs Piatra Craiului Mts, Sătic, 22.06.2005, S.R.; 1 spec. Piatra Craiului Mts, Valea cu Apă, upstream Brusturet chalet, 23.06.2005, S.R.

Anastrangalia Casey, 1924

Anastrangalia dubia (Scopoli, 1763)

2 specs Râmnicu Vâlcea, without other data, C.R.; 3 specs without data, K.D.; 1 spec. Carpaţi Mts, Broşteni, without other data, M.A.L.; Azuga, 5 specs without other data, F.Ed., 1 spec. without other data, M.A.L.; Băile Herculane, 6 specs

15.06.1951, S.N., 2 specs 4.08.1953, S.N., 9 spec. 19-23.07.1956, S.N., 1 spec. 22.08.1961, S.N., 1 spec. 3.06.1968, B.V., 8 specs 1-5.08.1975, S.N.; 1 spec. Rarău Mts, 19.08.1955, S.N.; 2 specs Retezat Mts, Gura Zlata, 26.07.1956, S.N.; Făgăraş Mts, Capra Peak, 5 specs 2.08.1957, S.N., 25 specs 17-20.08.1959, S.N.; 1 spec. Sinaia, Cumpătul, 7.07.1958, R.A.; 3 specs Sinaia, Valea Tufa, 8.07.1958, R.A.; 24 specs Făgăraş Mts, Buda Peak, 12-21.08.1959, S.N.; Făgăraş Mts, Otic Peak, 15 specs 15-16.08.1959, S.N.; 1 spec. 29.07.1974, S.N.; 2 specs Greşu, 21.07.1962, S.P.X.; 7 specs Baiul Mts, Piatra Mare, 24.07.1962, S.N.; Sinaia, 2 specs 14-26.07.1963, N.S., D.I.; 10 specs Cheia, 27.07.1967, R.A.; 2 specs Vrancea Mts, Zboina, 26.06.1971, S.P.X.; 1 spec. Slănic Moldova, 10.06.1971, W.M.; 4 specs France, Les Adrets de Frejus, bord d'Argentiere, 14.06.1974, B.P.; 1 spec. Retezat Mts, Rotunda, 9.08.1976, P.C.; 3 specs Piatra Craiului Mts, Plaiul Foi chalet, 12.07.1990, S.R.; 2 specs Băile Chirui, Lueta, 2.08.1993, H.C.; 7 specs Făgăraş Mts, Cârţişoara, Vama Cucului, 29.07.-1.08.1994, P.C., S.A., 1 spec. Elmo clearing, 2 km upstream Repedea, 24.06.1997, P.C.; 1 spec. Repedea f. h., 26.06.1997, P.C.; 2 specs Piatra Craiului Mts, Râioasa Valley, 7.06.2000, P.C.; 6 specs Piatra Craiului Mts, Sătic, Scorobia Valley, Padina Vălimăreanu, 5.07.2000, M.S., P.C., V.A.; 1 spec. Maramureş Mts, Poienile de sub Munte, 500 m downstream confluence of Rica and Budescu rivers, 14.06.2003, S.R.; 1 spec. Țibleş Mts, Dragomireşti, 22.06.2003, P.C.; 2 specs Maramureş Mts, Făina, valley of Vaser river, 21.07.2004, S.R.

Anastragalia sanguinolenta (Linnaeus, 1761)

7 specs without data; 4 specs Oravița, 15.06.1954, S.N.; Băile Herculane 1 spec. 23.07.1956, S.N., 1 spec. 1.08.1971, S.N.; 4 specs Retezat Mts, Gura Zlata, 26.07.1956, S.N.; Făgăraş Mts, Capra Peak, 9 specs 2.08.1957, S.N., 10 specs 17-20.08.1959, S.N., 63 specs 28.07.1974, S.N.; Făgăraş Mts, Buda Peak, 15 specs 12-18.08.1959, S.N., 21 specs 30.07.1974, S.N.; Făgăraş Mts, Otic Peak, 9 specs 15-16.08.1959, S.N., 19 specs 29.07.1974, S.N.; Băile Herculane, 1 spec. 4.07.1964, S.N., 1 spec. 1.08.1971, S.N.; 59 specs Făgăraş Mts, Piscu Negru, 27.07.1974, S.N.; 2 specs Bichigiu, Coşbuc, 27.05.1985, R.D.; 1 spec. Retezat Mts, Gura Zlata, 30.06.1985, P.C.; 16 specs Piatra Craiului Mts, Plaiul Foi chalet, 12.07.1990, S.R.; 2 specs France, Departement Pyrenées Orientales (66), Col de Portus, 11.08.1992; 3 specs Băile Chirui, Lueta, 2.08.1993, H.C.; 1 spec. Făgăraş Mts, Bălea waterfall, 25.07.1994, H.C.; 7 specs Făgăraş Mts, Cârţişoara, Vama Cucului, 29.07.-1.08.1994, P.C., S.A., 8 specs Săcel, Izvorul Albastru al Izei, 6-10.07.1995, P.C., M.I., S.M., R.D., S.A.; 7 specs Moisei (f.h. "Izvorul lui Dragoş"), 13.07.1995, P.C., S.A.; 1 spec. Săpânța, Brustani f. h., 2.07.1996, M.I.; 13 specs Săpânța, Colibi f. h., 5-15.07.1996, P.C., M.I., S.A.; 3 specs f. h. Repedea, 26.06.-2.07.1997, M.I.; 4 specs Elmo clearing, 2 km upstream Repedea, 24-29.06.1997, S.R., R.D.; 6 specs valley of Vişeuț river, 12 km upstream Borșa, 20.08.1997, P.C.; 5 specs Bălăsâna Valley, 4 km upstream Baia Borșa, 21.08.1997, P.C., R.E.; 2 specs valley of Frumușeaua river, 12 km upstream Crasna Vişeuului, 25.06.-29.08.1997, S.A., R.E.; 2 specs 1 km South of Izvoare health resort, Desești, 23.07.1998, V.A.; 14 specs Piatra Craiului Mts, Sătic, Scorobia Valley, Padina Vălimăreanu, 5.07.2000, M.S., P.C., V.A.; 1 spec. Piatra Craiului Mts, Râioasa Valley, 7.06.2000, P.C.; 1 spec. Piatra Craiului Mts, Sătic, Valea Scheilor chalet, 8.07.2000, M.S.; 1 spec. Piatra Craiului Mts, Sătic, Drăgoslăveni Valley, 8.07.2000, P.C.; 1 spec. Piatra Craiului Mts, 5 km upstream confluence of Bârsa Fierului and Bârsa Mare rivers, 12.06.2001, P.C.; 1 spec. Piatra Craiului Mts, Sătic Valea Lungă, 29.06.2002, P.C.;

3 specs Maramureş Mts, 500 m downstream confluence of Rica and Budescu rivers, 14.06.2003, S.R.; 11 specs Coşnea f. h., Poienile de sub Munte, 15-18.06.2003, P.C.; 8 specs valley of Cvaşniţa river, 6 km upstream Coşnea f. h., Poienile de sub Munte, 15.06.2003, P.C.; 1 spec. valley of Pop Ivan river, 10 km upstream Crasna Vişeuului, 17.06.2003, S.R.; Maramureş Mts, valley of Vaser river, Făina, 1 spec. 19.06.2003, S.M., 10 specs 21-22.07.2004, P.C., S.R.; 2 specs Țibleş Mts, valley of Baicu river, 5.5 km upstream Dragomireşti f. h., 21.06.2003, S.R.; 1 spec. Țibleş Mts, valley of Idişor rivulet, 22.06.2003, S.R.; 2 specs Țibleş Mts, Pârâul lui Pălcuţ, 22.06.2003, P.C.; 4 specs Maramureş Mts, Bardău, valley of Vaser river, 22.07.2004, P.C.; 4 specs Maramureş Mts, Cozia, valley of Vaser river, 22.07.2004, P.C.

Anoplodera Mulsant, 1839

Anoplodera dichroa (Blanchard, 1871)

(syn. *succedanea* (Lewis, 1879))

6 specs Japan, Saitama, Mitsumine Mt., 18.08.1970, O.S.

Anoplodera rufipes (Schaller, 1783)

1 spec. Comana, without other data, C.R.; 1 spec., without data, K.D.; 1 spec. without data, F.Ed.; 1 spec. Bucureşti, Andronache forest, 6.06.1937, P.G.A.; 2 specs Cernica, 28.05.1955, R.A.; 2 specs Bucureşti, Mogoşoaia forest, 7-26.06.1959, P.G.A., R.A.; Radovan, Panaghia forest, 2 specs 15.05.1961, 1 spec. 15.06.1984, A.M.; 2 specs Gutâi Mts, Bodi Lake, Bodi Ferneziu, 16.06.1963, S.N.; Băile Herculane, 1 spec. 2.07.1967, S.N., 2 specs 15.06.1968, S.N., 1 spec. 10.07.1977, S.N.; 2 specs Comana forest, 26.05.1981, S.N.; 1 spec. Esechioi, 10.06.1970, P.G.A.; 1 spec. Başpunar, 5.07.1980, S.N.

Anoplodera sexguttata (Fabricius, 1775)

2 specs Azuga, without other data, F.Ed.; 1 spec. Andronache forest, 6.06.1937, P.G.A.; 1 spec. Ciofeni (Vaslui), 3.06.1951; Bucureşti, Băneasa forest, 1 spec. 23.05.1954, 2 specs 18.05.1991, S.N.; 2 specs Pojoga, 7.06.1955, S.N.; Bucureşti, Mogoşoaia forest, 1 spec. 26.05.1958, P.G.A., 2 specs 7-26.1959, P.G.A., R.A., 1 spec. 4.06.1960, R.A.; Radovan, Panaghia forest, 2 specs 15.05.1961, 1 spec. 15.06.1984, A.M.; 7 specs Gutâi Mts, Bodi Lake, Bodi Ferneziu, 16.06.1963, S.N.; Băile Herculane, 1 spec. 2.07.1967, S.N., 2 specs 15.06.1968, S.N., 1 spec. 10.07.1977, S.N.; 1 spec. 24.05.1971, S.N., 10 specs 1-5.08.1971, S.N.; 1 spec. Căldăruşani, 10.06.1960, R.A.; 1 spec. Esechioi, 10.06.1970, P.G.A.; 2 specs Budeşti, 25.05.1979, A.G.; 1 spec. Başpunar, 5.07.1980, S.N.; Comana forest, 2 specs 26.05.1981, S.N., 1 spec. 12.06.1983, S.N.; 1 spec. France, Département Pyrénées Orientales (66), 07.1991.

Cornumutilla Latzner, 1843

Cornumutilla quadrivittata (Gebler, 1830)

5 specs Făgăraş Mts, Negoiu Peak, 11.08.1957, S.N. (Fig. 1 A).

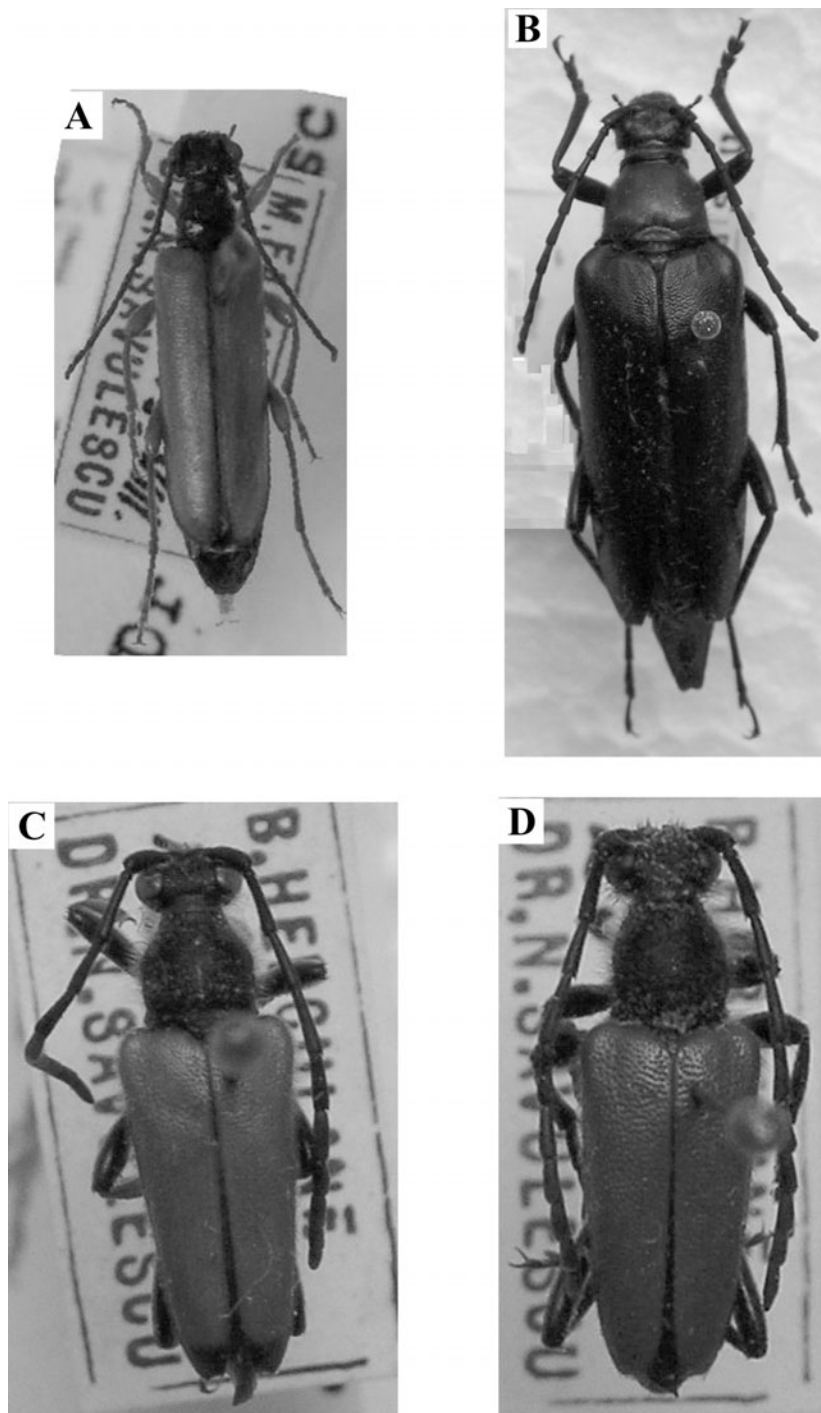


Fig. 1 – A, *Cornumutilla quadriguttata*; B, *Macroleptura thoracica*; C, *Paracorymbia fulva*; D, *Paracorymbia pallens*.

Cortodera Mulsant, 1863*Cortodera femorata* (Fabricius, 1787)

3 specs Slobozia, without other data, F.Ed.; Hagieni 1 spec. 28.05.1963 S.N., 1 spec. 21.05.1965 S.N.; 1 spec. Babadag forest, 25.05.1975, S.N.

Cortodera flavimana (Waltl, 1838)

1 spec. without data, F.Ed.; 1 spec. Comana forest, without other data, M.A.L.; București 1 spec. 21.05.1928, 1 spec. 12.05.1959, R.A.; 1 spec. Brănești, Pasărea forest, 6.06.1959, S.N.; 8 specs Bârnova, 13.06.1965, S.N.; 3 specs București, Mogoșoaia forest, 18.05.1984, P.C.; 1 spec. Drobeta – Turnu Severin, 5.06.1984, S.R.; 1 spec. Hagieni forest, 24.05.1995, P.S.M.

Cortodera humeralis (Schaller, 1783)

2 specs without data, F.Ed.; 1 spec. Bucegi Mts, Omu Peak, without other data, F.Ed.; 1 spec. Hațeg Mts (Poiana Ruscă Mts?), without other data. D.Fr.; 1 spec. Băile Herculane, without other data, D.Fr.; 1 spec. Țigănești forest, 8.05.1949; 2 specs București, Băneasa forest, 10.05.1952, S.N.; 1 spec. Snagov, 25.04.1957, R.A.; Cernica, 1 spec. 28.04.1962, R.A., 1 spec. 8.05.1962, P.G.A.; Brănești, Pasărea forest, 1 spec. 29.06.1962, P.G.A., 3 specs 8.05.1963, R.A., S.P.X., 1 spec. 7.05.1965, S.N., 1 spec. 19.06.1965, R.A., 1 spec. 5.05.1966, R.A.

Grammoptera Audinet - Serville, 1835*Grammoptera abdominalis* (Stephens, 1831)

(syn. *variegata* (Germar, 1824))

1 spec. France, Aiguines, 28.05.1974, B.P.; 7 specs France, Cipieres, le Plan, 8.06.1974, B.P.; 9 specs France, Cipieres, Bord du Loup, 8.06.1974, B.P.

Grammoptera ruficornis (Fabricius, 1781)

(syn. *atra* Fabricius, 1775)

1 spec. without data, K.D.; 2 specs Sighișoara, without other data, D.Fr.; 1 spec. Brașov, without other data, D.Fr.; 3 specs Pojoga, 7.06.1955, S.N.; 3 specs Băile Herculane, 15.06.1968, S.N.; 12 specs Italy, Ravenna, Pineta di Classe, 5.05.1970, G.P.; 12 specs Italy, Ravenna, 5.05.1975, G.P.; 42 specs Italy, Cialla, Udine, 05.1982, R.P.; 3 specs Ciucurova forest, 22.05.1997, P.C.

Grammoptera ustulata (Schaller, 1783)

Băile Herculane, 2 specs without other data, D.Fr., 1 spec. 15.05.1977, S.N.; 1 spec. Deva, 5.06.1955, S.N.; 7 specs Gutâi Mts, Bodi Lake, Bodi Ferneziu chalet, 17.06.1963, S.N.; 1 spec. Rodna Mts, Pietrosu Peak, 18.06.1963, S.N.; 30 specs France, Cipieres, Bord du Loup, 8-14.06.1974, B.P.; 1 spec. France, Les Adrets de Frejus, bord d'Argentièr, 14.06.1974, B.P.; 2 specs Săcel, Izvorul Albastru al Izei, 6.VII.1995, P.C.; 1 spec. Maramureș Depression, Călinești, Văleni, Valea Săcăturii, „Feredeaua“, 7.07.1995, P.C.; 1 spec. Săpânța, Colibi f. h., 8.07.1996, M.I.; 37 specs Repedea f. h., 22.06.–2.07.1997, S.R., M.I., P.C., A.M.; 9 specs valley of

Frumușeaua river, 12 km upstream Crasna Vișeului, 23-29.06.1997, S.R., S.A., P.C.; 57 specs Elmo clearing, 2 km upstream Repedea, 24.06.–29.08.1997, S.R., M.I., P.C.; 30 specs Smereceni clearing, 7 km upstream Repedea, 24.06.29.VIII.1997, S.R., P.C., S.A.; 3 specs Cârlișura Valley, 17 km upstream Repedea, 27.06.1997, P.C.; 1 spec. Ocna Șugataș, Pleșca chalet, 14.07.1998, P.C.; 1 spec. Tătaru dam of Mara river, Mara, Desești, 16.07.1998, M.I.; 2 specs Colnic f. h., 2 km upstream Mara, Desești, 18.07.1998, P.S.M.

Judolia Mulsant, 1863

Judolia sexmaculata (Linnaeus, 1758)

1 spec. Retezat Mts, Gura Apei, 7.06.1951, S.N.; 2 specs Russia, Ural Mts, Swerdlowsk, 06.1952; 1 spec. Cindrel Mts, Păltiniș, 15.08.1956, W.R.; 1 spec. Făgăraș Mts, Capra Peak, 2.08.1957, S.N.; 2 specs Făgăraș Mts, Suru chalet, 28.07.1974, S.N.

Leptura Linnaeus, 1758

Leptura aethiops Poda, 1761

1 spec. without data, F.Ed.; 1 spec. Căliman Mts, Răstolnița, 16.06.1956, S.N.; 3 specs Vișeu de Sus, 10.06.1966, S.N.; 1 spec. Călinești („Săcătura” f. h.), 7.07.1995, M.I.

Leptura annularis Fabricius, 1801

(syn. *arcuata* Panzer, 1793)

1 spec. Turnu Roșu (Rottenturn), without other data; 1 spec. Hațeg Mts (Poiana Ruscă Mts?), without other data, D.Fr.; 1 spec. Hășmacul Mare Mts, without other data; Retezat Mts, Gura Zlata, 3 specs 2.07.1955, S.N., 1 spec. 14.07.1984, G.V.; Japan, Nagano, Shimajima, 5 specs 20.07.1970, 4 specs 25.07.1972, O.S.; 5 specs Elmo clearing, 2 km upstream Repedea, 24–29.06.1997 M.I., S.A., S.R.; 1 spec. Mara Valley, 2 km upstream Mara, Desești 18.07.1998, M.I.; 4 specs Piatra Craiului Mts, Oncioaia, valley of Dâmbovița river, 3.07.2002, P.C.

Leptura aurulenta Fabricius, 1792

1 spec. Râmnicu Vâlcea, without other data, C.R.; 1 spec. Azuga, without other data, F.Ed.; 1 spec. Bușteni, without other data, F.Ed.; 2 specs Comana forest, without other data, M.A.L.; Băile Herculane 1 spec 15.06.1951, S.N., 4 specs 12.07.1955, S.N., 1 spec. 23.07.1956, S.N., 16 specs 4-14.07.1960, S.N., 4 specs 2-15.07.1960, S.N., 1 spec. 12.08.1961, S.N., 2 specs 6.07.1963, S.N., 5 specs 4.08.1964, S.N., 5 specs 3-5.08.1971, S.N., 35 specs 20.06.-8.07.1974, S.N., 1 spec. 18.05.1977, S.N., 20 specs 27.06.-4.07.1978, S.N., 3 specs 12-14.07.1982, S.N., 6 specs 4.06.1983 G.V.; 1 spec. 15.06.1986, S.N.; 1 spec. Brănești, Pasărea forest, 5.07.1955, S.N.; 2 specs Retezat Mts, 17.07.1956, R.A.; Pojoga, 1 spec. 27.06.1957, S.N., 2 specs 12.07.1965, S.N.; 1 spec. București, Băneasa forest, 18.06.1960, S.N.; Comana forest, 1 spec. 9.07.1955, S.N., 1 spec. 9.06.1963, S.N.; Mezeș Mts, 1 spec. 20.08.1968, T.A.; Ghelmegeoaia, 1 spec. 1.06.1971, S.N., 5 specs 2.06.1972, S.N.; 1 spec. Radovan, Panaghia forest, 13.06.1984, A.G.; 1 spec. Călinești Oas, 31.07.1985, P.C.; 1 spec. Maramureș Mts, the confluence of the Pop Ivan and the

Hututeanca rivers, 12 km upstream Crasna Vișeului, 18.07.2004, P.C.; 2 specs Maramureș Mts, Făina, valley of Vaser river, 22.07.2004, C.G.

Leptura dimorpha Bates, 1873

2 specs Japan, Nagano Pref., Nakabira, 5.07.1970, I.N.

Leptura latipennis Matsushita, 1933

6 specs Japan, Aizu, Fukushima, 10.06.1971, O.S.

Leptura ochraceofasciata Motschulsky, 1861

1 spec. Japan, Nara Pref., Ohdai Mt., 10.08.1970, I.N.; 17 specs Japan, Nagano, Shimajima, 25.07.1972, O.S.

Leptura quadrifasciata Linnaeus, 1758

2 specs Moinești, without other data, C.R.; 4 specs Broșteni, without other data, M.A.L.; 4 specs Azuga, without other data, M.A.L.; Retezat Mts, 4 specs 11.06.1946, 2 specs 26.06.1951. R.A., 18 specs 27.06.1956, S.N.; 1 spec. Vișeu de Jos, 1949; 1 spec. Dumbrăveni, 07.1950, S.P.X.; 1 spec. Vânători, 11.07.1950; 1 spec. Comana, 9.07.1955; Budești, 1 spec. 24.06.1956, S.N., 1 spec. 9.07.1957, R.A.; 8 specs Retezat Mts, Gura Zlata, 26.07.1956, S.N.; 1 spec. Pojoga, 27.06.1957, S.N.; 4 specs Făgăraș Mts, Otic Peak, 5-16.08.1959, S.N.; 16 specs Făgăraș Mts, Buda Peak, 12-21.08.1959, S.N.; Făgăraș Mts, Capra Peak, 4 specs 17-20.08.1959, S.N., 4 specs 27.07.1974, S.N.; 3 specs Ciovârnoșani, 24.06.1961, S.N.; 1 spec. Valu lui Traian, 1.07.1961, W.M.; 4 specs Bozovici, Banat, 6.06.1962, D.I.; 2 specs Tulnici, Vrancea, 20.07.1962, R.A.; Băile Herculane, 1 spec. 29.06.1962, S.N., 1 spec. 1.08.1971, S.N., 3 specs 1.07.1977, S.N., 1 spec. 12.07.1982, S.N.; 1 spec. Lacul Roșu, 1.08.1964, S.P.X.; 1 spec. Cireșu, 7.07.1965, S.N.; 2 specs Sfântu Gheorghe, Danube Delta, 25.X.1970 N.S.; 1 spec. Nera Valley, 13.06.1976, P.G.A., 4 specs 17.06.1983, S.N., 5 specs 19.07.1991, S.N.; 1 spec. Gutâi Mts, Bodi Lake, Bodi Ferneziu chalet, 16.06.1963, S.N.; 2 specs Cireșu, 7.07.1965, S.N.; 4 specs Cheia, 27.07.1967, R.A.; 1 spec. Dragomirești, 28.05.1972, S.P.X.; 1 spec. Căineni, 9.07.1973, S.N.; 2 specs Făgăraș Mts, 7.06.1976, S.P.X.; 1 spec. Brănești, Pasărea forest, 7.07.1976, S.P.X.; 3 specs Făgăraș Mts, Suru chalet, 5.07.1977; 1 spec. Retezat Mts, Rotunda, 6.08.1981, B.V.; Piatra Craiului Mts, 1 spec. Plaiu Fcii chalet, 5.08.1983, P.C., 11 specs. 12.07.1990 S.R.; 2 specs Retezat Mts, Gura Zlata, 14.07.1984, P.C.; 1 spec. Bucegi Mts, Pârâul Rece, 21.08.1984, S.R.; 1 spec. Avrig, 16.07.1985, S.R.; 3 specs Băile Chirui, Lueta, 2.08.1993, H.C.; 5 specs Făgăraș Mts, Cârțișoara, Vama Cucului, 29.07.-1.08.1994, P.C., S.A., H.C.; 1 spec. Piatra Craiului Mts, Sătic, Valea Scorobia, Padina Vălimăreanu, 5.07.2000, P.C.; 1 spec. Piatra Craiului Mts, Garofița Pietrei Craiului chalet, 7.07.2000, M.S.; 1 spec. Piatra Craiului Mts, Gura Bârsei chalet 10.06.2000, P.C.; 1 spec. Doftana Valley, 6.08.1985, P.C.; 1 spec. Vlădeasa Mts, Valea Drăganului, 8.08.1989, S.R.; 1 spec. Ieud, 4.07.1995, P.C.; 4 specs valley of Frumușeaua river, 10 km upstream Crasna Vișeului, 23.06.-29.08.1997, S.R., P.C., R.E.; 1 spec. Vișeu valley, 2 km downstream Baia Borșa, 20.08.1997, P.C.; 1 spec. Vișeu valley, 6 km downstream Moisei, 21.08.1997, R.E.; 1 spec. valley of Bistra river, 4 km upstream Bistra, 26.08.1997, P.C.; 1 spec. Tătaru dam on Mara river, Desești, 16.07.1998, P.C.; 6

specs upstream Mara, Desești, 17.07.1998, P.S.M., M.I., V.A.; 4 specs Colnic f. h., 2 km upstream Mara river, Desești, 18.07.1998, M.I., P.S.M., V.A.; 3 specs Pleșca chalet (800 m), Ocna Șugatag, 17-20.1998, P.C., P.S.M.; 2 specs left bank of Coșeu river, Sârbi, Budești, 19.07.1998, P.C., M.I.; 1 spec. left bank of Coșeu river, Cornești, Giulești, 19.07.1998, M.I.; 1 spec. 1 km upstream Mara, valley of Mara river, 22.07.1998, P.C.; 5 specs 1 km South of Izvoare health resort, Desești, 23.07.1998, M.I., P.An., V.A.; 2 specs left bank of Coșeu river, Berbești, Giulești, 24.07.1998, M.I., P.S.M.; 3 specs the confluence of the Pop Ivan and the Hututeanca rivers, 12 km upstream Crasna Vișeuului, 18.07.2004 P.C.; 3 specs Coșnea f. h., Poienile de sub Munte, 19.07.2004, P.C., C.G.; 1 spec. Maramureș Mts, Făina, valley of Vaser river, 21.07.2004, S.R.; 3 specs valley of Socolău river, 2 km upstream the confluence of the Socolău and the Rica rivers, 23.07.2004, S.R.; 1 spec. valley of Vișeu river, 4 km upstream Bistra, 24.07.2004, P.C.; 4 specs valley of Rica river, 2 km upstream Coșnea f. h., Poienile de sub Munte, 25.07.2004, S.R.; 1 spec. Maramureș Mts, Bardău, valley of Vaser river, 22.07.2004, P.C.; 1 spec. Făgăraș Mts, valley of Otic river, 4.08.2004, S.R.; 3 specs Făgăraș Mts, Vidraru Lake, Curmătura Valley, 8.08.2004, S.R.; 1 spec. Făgăraș Mts, Valea cu Pești, 6.08.2004, S.R.

Lepturobosca Reitter, 1912

Lepturobosca virens (Linnaeus, 1758)

6 specs without data, K.D.; 1 spec. Azuga, without data, M.A.L.; 1 spec. Broșteni, without data, M.A.L.; Retezat Mts, Gura Zlata, 1 spec. 07.1931, T.E., 2 specs 16.07.1981, P.C.; 1 spec. Slănic Moldova, 1.07.1949; 2 specs Retezat Mts 27.07.1956 S.N.; Făgăraș Mts, Buda Peak, 18 specs 12-21.08.1959, S.N., 47 specs 30.07.1974, S.N.; Făgăraș Mts, Otic Peak, 5 specs 15-16.08.1959, S.N., 3 specs 29.07.1974, S.N.; Făgăraș Mts, Capra Peak, 2 specs 28.07.1957, S.N., 5 specs 17-20.08.1959, S.N., 51 specs 28.07.1974, S.N., 2 specs 17.07.1975, S.N.; 4 specs Râncea, 1.07.1964, S.P.X.; 2 specs Lacul Roșu, 1.08.1964, S.P.X.; 1 spec. Ceahlău Mt., 20.06.1965; 1 spec. Borsec, 14.06.1966, S.P.X.; 2 specs Rășinari, 2.07.1966, S.N.; 2 specs Bucegi Mts, Sinaia, 26.06.1971, S.N.; 4 specs Bucegi Mts, Sinaia, Izvorul Dorului, 27-29.06.1971, S.N.; 46 specs Făgăraș Mts, Piscu Negru, 27.07.1974, S.N.; 3 specs Bicaz, Lapos Valley, 5-8.08.1975 S.N.; Retezat Mts, Rotunda, 2 specs 9.08.1976, P.C., 1 spec. 2.08.1980, B.V.; 1 spec. Râșnov Gorges, 22.07.1978; 2 specs Maramureș Mts, Vaser Valley, 20.08.1982 S.I.; 2 specs Retezat Mts, Tăul Negru, 25.08.1985, P.C.; 1 spec. Piatra Craiului Mts, Șpirala Valley, 12.07.1990, S.R.; 2 specs Gurghiului Mts, 10-18.07.1994, M.P.B.; 1 spec. Făgăraș Mts, Bâlea waterfall, 26.07.1994, S.A.; 1 spec. Cârțișoara, Vama Cucului 29.VII.1994; 3 specs Săcel, Izvorul Albastru al Izei, 6-9.07.1995, P.C., S.M., H.C.; 1 spec. Elmo clearing, 2 km upstream Repedea, 24.06.1997, P.C.; 1 spec. Vișeuț river, 12 km upstream Borșa, 20.08.1997, P.C.; 1 spec. Bălăsâna Valley, 4 km upstream Baia Borșa, 21.08.1997, R.E.; 1 spec. Piatra Craiului Mts, Crăpătura Valley, 8.06.2000, M.S.; 2 specs 500 m downstream the confluence of the Rica and Budescu rivers, Poienile de sub Munte, 14.06.2003, S.R.; 1 spec. valley of Hututeanca river, 17.06.2003, S.R.; 1 spec. valley of Idișor rivulet, Săliște, 22.06.2003, S.R.; 1 spec. Piatra Craiului Mts, Peștera, 26.08.2003, P.C.; 5 specs the confluence of the Pop Ivan and Hututeanca rivers, 12 km upstream Crasna Vișeuului, 18.07.2004, C.G.; 1 spec. Coșnea f. h., Poienile de sub Munte, 19.07.2004, P.C.; 19

specs Maramureş Mts, Făina, valley of Vaser river, 21-22.07.2004, S.R., P.C., C.G.; 1 spec. valley of Socolău river, 2 km upstream the confluence of the Socolău and Rica rivers, 23.07.2004, S.R.; 1 spec. Făgăraş Mts, Vidraru Lake, 8.08.2004, S.R.

Macroleptura Nacane & Ohbayashi, 1957

Macroleptura thoracica (Creutzer, 1799)

Băile Herculane, 1 spec. 20.08.1954, S.N., 1 spec. 19.07.1959, N.C. (Fig. 1 B).

Nakanea Ohbayashi, 1963

Nakanea vicaria Bates, 1884

5 specs Japan, Nara Pref., Ohdai Mt., 10.08.1970, 2 specs Japan, Nagano, Shimajima, 25.07.1972, O.S.

Nivellia Mulsant, 1863

Nivellia sanguinosa (Gyllenhal, 1827)

1 spec. Cârlișău Valley, 17 km upstream Repedea, 27.06.1997, P.C.

Pachytodes Pic, 1891

Pachytodes cerambyciformis (Schrank, 1781)

1 spec. without data, F.Ed.; 1 spec. without data, K.D.; 2 specs Azuga, without other data, M.A.L.; 1 spec. Moinești, without other data; 2 specs Retezat Mts, Pietrele chalet, 2.07.1950; Cheia, 1 spec. 1.08.1954, 6 specs 26-27.07.1967, S.P.X., R.A.; 1 spec. Teleajen Valley, 29.07.1954; 7 specs Retezat Mts, Gura Zlata, 26-27.07.1956, S.N.; 1 spec. Bicaz Gorges, 18.07.1957 N.S.; 4 specs Tismana, 3.06.1959, S.P.X.; Sinaia, 2 specs 12.07.1960, R.A., 1 spec. 27.06.1963, R.A.; 20 specs Făgăraş Mts, Buda Peak, 12.08.1959, S.N.; 4 specs Făgăraş Mts, Otic Peak, 15.08.1959, S.N.; Făgăraş Mts, Capra Peak, 24 specs 17-20.08.1959, S.N., 28 specs 27.07.1974, S.N.; 1 spec. Baia Mare, 17.06.1963, S.N.; 1 spec. Gutâi Mts, Bodi Lake, Bodi Ferneziu chalet, 17.06.1963, S.N.; Băile Herculane, 1 spec. 17.06.1962, S.N., 2 specs 23.06.1963, S.N., 1 spec. 2.06.1965, S.N., 1 spec. 14.06.1967, S.N., 8 specs 20.05.-17.07.1977, S.N.; 1 spec. Gârla Mare, 24.06.1964, N.S.; 1 spec. Lacul Roșu, 23.07.1966, P.G.A.; 4 specs Suzana monastery, 28-29.03.1967, S.P.X.; 1 spec. Zboina, 26.06.1971, S.P.X.; 1 spec. Vrancea Mts, Lepșa, Tulnici, 29.06.1971, S.P.X.; 1 spec. Brașov, 27.07.1971; 1 spec. Moldova Nouă, 26.05.1973, S.N.; 1 spec. Crișul Pietros Valley, 1.07.1976, A.G.; 4 specs Poiana (Hunedoara), 2.07.1980, A.G.; 1 spec. Retezat Mts, Gura Zlata, 14.07.1984, P.C.; 1 spec. Bighigiu, Coșbuc, 27.05.1985, R.D.; 55 specs Făgăraş Mts, Poiana Neamțului, 18-21.07.1985, D.I., S.R., M.I., C.I.; 6 specs Vlădeasa Mts, Valea Drăganului, 7.08.1989, S.R., R.D.; 7 specs Piatra Craiului Mts, Plaiu Foii chalet, 12.07.1990, S.R., M.I.; 7 specs Motru Sec, Lupșa Valley, 18.06.1992, S.R., R.N.; 4 specs Băile Chirui, Lueta, 2.08.1993, H.C.; 8 specs Făgăraş Mts, Cârțișoara, Vama Cucului, 29.07.-1.08.1994, P.C., S.A., 3 specs Călinești, Văleni (“Săcătura” f. h.), 7.07.1995, M.I.; 1 spec. Săcel, Izvorul Albastru al Izei, 9.07.1995, S.A.; 1 spec. National Park “Pietrosul Rodnei”, 11.07.1995, S.A.; 1 spec. Moisei (“Izvorul lui Dragoș” f. h.), 13.07.1995, S.A.; 1 spec. Săpânța, Brustani f. h., 6.07. 1996, H.C., 1 spec. Săpânța,

Colibi f. h., 9.07.1996, P.C., 1 spec. Săpânța, Nireș f. h., 10.07.1996, S.A., 1 spec. Săpânța valley, 13.07.1996, S.M.; 1 spec. Voineasa, 1.08.1996, P.S.M.; 13 specs valley of Frumușeaua river, 10 km upstream Crasna Vișeului, 23.06.–29.08.1997, S.R., S.A., M.I., P.C.; 9 specs f. h. Repedea, 26.06.–2.07.1997, M.I., P.C.; 2 specs Smerețeni clearing, 7 km upstream Repedea, 27.06.1997, S.A.; 3 specs Bistra valley, 4 km upstream Bistra, 28.06.–26.08.1997, P.C., S.A.; 2 specs Vișeuț river, 12 km upstream Borșa, 20.08.1997, P.C., R.E.; 1 spec. Bălăsâna valley, 4 km upstream Baia Borșa, 21.08.1997, P.C.; 1 spec. Repedea, Miclușa, 08.1997, P.C.; 1 spec. Lintești, 13.07.1998, P.S.M.; 4 specs Tătaru dam on Mara river, Desești, 16-19.07.1998, P.S.M.; 1 spec. Ocna Șugatag, Pleșca chalet, 17.07.1998, P.An.; 10 specs Colnic f. h., 2 km upstream Mara river, Desești, 17-18.07.1998, P.S.M.; 2 specs Mara Valley, 2 km upstream Mara, Desești, 18.07.1998, M.I., V.A.; 1 spec. Rona de Sus, 20.07.1998, V.A.; 1 spec. 1 km South of Izvoare health resort, Desești, 23.07.1998, M.I.; 1 spec. Steda Valley, Desești, 29.08.1998, P.S.M.; 1 spec. left bank of Coșeu river, Cornești, Călinești, 19.07.1998, P.An.; 6 specs Piatra Craiului Mts, Gura Bârsei chalet, 1.06.2002, P.C.; 1 spec. Piatra Craiului Mts, Sățic, Valea Lungă, 29.06.2002, P.C.; 2 specs Piatra Craiului Mts, Berila Valley, Sățic, 30.06.2002, P.C.; Coșnea f. h., Poienile de sub Munte, 4 specs 16-18.06.2003, S.R., P.C.; 1 spec. 19.07.2004, P.C.; 2 specs Poienile de sub Munte, 500 m upstream the confluence of the Rica and Budescu rivers, 14.06.2003, S.R.; 2 specs valley of Hutureanca river, 10 km upstream Crasna Vișeului, 17.06.2003, S.R., P.C.; 1 spec. Țibleș Mts, Dragomirești, Lunca lui Cosiță, 22.06.2003, P.C.; 1 spec. Bumbesti, Lainici monastery, 7.07.2004, P.A.; 2 spec. Petroșani, valley of Polatiștea river, 7.07.2004, B.C.; 3 specs Poienile de sub Munte, Coșnea f. h., 19.07.2004, P.C., C.G.; 2 specs valley of Făina river, Maramureș Mts, 22.07.2004, S.R.; 2 specs Bardău, valley of Vaser river, Maramureș Mts, 22.07.2004, P.C.; 1 spec. valley of Socolău river, 2 km upstream the confluence of the Socolău and Rica rivers, 23.07.2004, S.R.; 1 spec. valley of Vișeu river, 4 km upstream Bistra, 24.07.2004, P.C.; 4 specs Făgăraș Mts, valley of Buda river, 4.08.2004, S.R., P.A.; 4 specs Făgăraș Mts, valley of Otic river, 4.08.2004, S.R.; 4 specs Făgăraș Mts, Curmătura Valley, 8.08.2004, S.R.; 4 specs. Piatra Craiului Mts, Sățic, 22.06.2005, S.R., P.E.

Pachytodes cometes Bates, 1884

(syn. *connecta* Nishio, 1950)

1 spec. Japan, Wakayama Pref., Koya Mt., 26.07.1962, I.N.; 5 specs Japan, Nagano, Shimajima, 25.07.1972, O.S.

Pachytodes erraticus (Dalman, 1817)

1 spec. Tismana without other data, C.R.; Comana, 3 specs without other data, C.R., 2 specs without other data, M.A.L.; 3 specs București, without other data, M.A.L.; 15 specs Azuga, without other data, F.Ed.; București, Andronache forest, 3 specs 19.06.1938, P.G.A., 2 specs 29.06.1963, P.G.A.; Comana forest, 2 specs 3.05.1941, 32 specs 14.06.–19.07.1959, S.N., 3 specs 25.06.1962, P.G.A., 22 specs 24.06.1965, S.N., 5 specs 5-17.07.1972, S.N., 2 specs 22-23.06.1976, W.M., P.G.A., 4 specs 4.06.1980, P.C.; Cernica, 1 spec. 2.06.1950, 6 specs 5.07.1960, R.A.; 4 specs Sighișoara, 13-23.07.1950; 2 specs Stănița, 5.07.1950; 1 spec. București, Copăceni, 17.06.1951; București, Băneasa forest, 1 spec. 23.05.1954, 4 specs 5.06.1959, S.N., 2 specs 1.07.1980, B.V.; Băneasa, Canaraua Fetei, 2 specs

19.06.1954, S.N., 2 specs 24.07.1955, S.N., 6 specs 26-29.06.1956, S.N., 1 spec. 29.05.1962, S.N., 9 specs 17-16-20.07.1964, S.N., W.M., 1 spec. 14.06.1966, S.N., 2 specs 4.07.1980, S.N., 12 specs 26.06.1995, P.C., 1 spec. 23.07.1999, A.G.; Căldărușani, Brazi, 1 spec. 12.06.1956, P.G.A., 4 specs 30.05.-15.07.1959, R.A., 3 specs 21.06.1960, R.A.; Oltina, 3 specs 26.06.1956, S.N., 3 specs 13.06.1960, P.G.A.; 1 spec. Luncavița, 26.06.1956, S.P.X.; Băile Herculane, 6 specs 19-23.07.1956, S.N., 5 specs 14.07.1960, S.N., 3 specs 23.06.1963, S.N.; 8 specs 14.06.1967, S.N., 1 spec. 20.06.1970, R.A., 1 spec. 26.05.1971 S.N., 17 specs 21.05.-17.07.1977, S.N., 1 spec. 4.06.1983, G.V.; Southern Dobrogea, 1 spec. 20.06.1956, S.N., 3 specs 4.06.1958, S.N., 1 spec. 11.06.1964, S.N.; Babadag forest, 1 spec. 30.06.1956, S.P.X., 2 specs 20.06.1958, S.N., 7 specs 20-29.06.1962, S.N., 3 specs 20.06.1963, S.P.X., 1 spec. 20.06.1965, S.P.X.; Nifon, Hamcearca, 5 specs 20.06.1958, S.I., 1 spec. 8.07.1964, S.I.; 12 specs 20.06.1963 S.P.X., Greci, 2 specs 17-20.06.1958, S.I., 3 specs 30.06.-11.07.1960, S.I., 2 specs 22-06.1964, S.I., 1 spec. 6.06.1973, P.G.A.; 3 specs Periș, 18.06.1959, R.I.V.; Brănești, Pasărea forest, 47 specs 6-19.06.1959, S.N., 10 specs 29.06.1962, D.I., P.G.A., 7 specs 4-5.07.1962, S.N., W.M., R.A., 17 specs 14-25.06.1965, S.N., 4 specs 16.06.1966, R.A.; 4 specs 13.06.1978, S.R.; Căldărușani, 7 specs 29-30.06.1959, R.A., 48 specs 21.06.1960, R.A.; 2 specs Oravița, 15.07.1959, S.N.; 2 specs Bucovăț, 16.06.-25.07.1960; 33 specs Cernica forest, 5.07.1960, R.A.; 2 specs Rebegi forest, 12.07.1960; Craiova, 6 specs 20.08.1960, 2 specs 24.09.1964; 1 spec. Prundu, 15.05.1961, W.M.; Pustnicu forest, 11 specs 5.07.1962, R.A., 1 spec. 4.07.1971, R.A.; 1 spec. Vidra, 23.07.1962, S.P.X.; 1 spec. Dâlga, 5.06.1963, N.S.; 10 specs Ineu (Arad County), 21.06.1963, S.N.; 3 specs Moldova Nouă, 29.06.1964, S.N.; Pojoga, 24 specs 11-12.06.1965, S.N., 3 specs 2.07.1967, S.N.; Grățca, Orșova, 1 spec. 27.05.1966, N.S., 6 specs 28.06.1969, N.S.; Cazane (the Danube Gorges), 1 spec. 25.05.1966, N.S., 11 specs 10.06.1967, N.S.; 9 specs Niculițel, 28-29.06.1967, W.M., S.N.; 3 specs Bădila (Argeș county), 29.06.1967, W.M.; 3 specs Ploiești, 29.06.1967, R.A.; Cheia, 2 specs 27.07.1967, R.A., 4 specs 22.09.1967, S.P.X., 1 spec. 22.IX.1967, S.P.X.; 3 specs Suzana monastery, Măneciu, 29.07.1967, S.P.X.; 1 spec. Valu lui Traian, 19.06.1968, S.P.X.; 1 spec. Botoșani, 10.07.1969, B.M.; 12 specs Budești, 15.07.1969, S.N.; 1 spec. Orșova, 16.06.1970, R.A.; 1 spec. Ghelmeșoiaia, 2.06.1972, S.N.; Niculițel, Cocoș monastery, 7 specs 9-17.06.1973, P.G.A., W.M., C.A., 9 specs 15.05.-7.07.1975, P.G.A.; 2 specs Făgăraș Mts, Suru chalet, 27.07.1974, S.N.; 1 spec. Făgăraș Mts, Capra Peak, 28.07.1974, S.N.; Zăvestreni forest, 24 specs 22-23.06.1977, S.R., P.G.A., G.N., 6 specs 21.06.1978, S.R., 20 specs 15.06.1979, S.R., A.G.; 2 specs Erghevița, 29.06.1977, S.N.; 1 spec. Frumoasa, 20.06.1979, A.I.; 5 specs Nicolae Titulescu, Palanca forest, 24.06.1980, P.C., S.R.; 1 spec. Snagov, 29.06.1980, S.P.X.; 1 spec. Crevedia Mare, 10.07.1980, S.R.; 15 specs Scornicești, 23-24.07.1980, S.R., M.I.; 2 specs Slatina, Strehareț forest, 25-26.07.1980, D.I., S.R.; 3 specs Segarcea, 19.06.1981, P.C.; 8 specs Sarului forest, 22-26.06.1981, A.G., A.M.; Călugăreni, 2 specs 20.06.1982, P.C., 3 specs 10.07.1983, P.C.; 17 specs Podari, 20.06.1982, S.R., M.I., D.D.; 3 specs Târnava, 21.06.1982, S.R., M.I., D.D.; 1 spec. Gura Motrului, 21.06.1983, P.C.; 5 specs Strehăia, 24.06.1983, S.R., M.I., P.C.; 4 specs Balota, 12.07.1983, S.R., M.I.; 3 specs Târgu Cărbunești, 11-13.06.1984, S.R., M.I.; 4 specs Radovan, Panaghia forest, 13-15.06.1984, A.G., A.M.; 27 specs Sihlea, 23.06.1987, M.I., P.C.; 2 specs Costești, Spătaru forest (Buzău County), 24.06.1987, M.I.; 3 specs Tismana, 31.07.1992, A.G.; 7 specs Agighiol, 12.06.1993, M.I.; 2 specs Slava Rusă, Babadag

forest, 22.06.1993, M.I.; 1 spec. Feleag, Vânători, 30.07.1993, H.C.; Furnica, Dumbrăveni forest, 43 specs 13.05.-22.06.1995, P.C., A.G., 3 specs Letca Nouă, 7.06.1998, P.S.M.; 2 specs Lințești, 13.07.1998, P.S.M.

Paracorymbia Miroshnikov, 1998

(syn. *Brachyleptura* auct., *Cribroleptura* Vives, 2000)

Paracorymbia fulva (Degeer, 1775)

1 spec. Besançon, without other data, M.A.L.; 2 specs Southern Dobrogea, 23.07.1955, S.N.; 13 specs France, Département Var, Sainte Beaume Mts, 07.1965, R.J.; Băile Herculane, 23 specs 10-16.06.1977, S.N., 15 specs 7-17.07.1977, S.N. (Fig. 1 C).

Paracorymbia maculicornis (Degeer, 1775)

1 spec. Retezat Mts, Gura Zlata, 9.07.1955, S.N.; Făgăraș Mts, Capra Peak, 1 spec. 2.08.1957, S.N., 13 specs 17-20.08.1959, S.N.; Făgăraș Mts, Buda Peak, 12 specs 12-18.08.1959, S.N.; 1 spec. Făgăraș Mts, Otic Peak, 15.08.1959, S.N.; Oravița, 3 specs 9.07.1959, S.N.; 18 specs 2-10.06.1977, S.N., 4 specs 1-4.08.1977, S.N.; 1 spec. Bicaz, Lapoș Valley, 6.08.1975, S.N.; 1 spec. Balota, 11.07.1983, M.I.; 3 specs Moisei, (Izvorul lui Dragoș f. h.), 13.07.1995, P.C.; 1 spec. Elmo clearing, 2 km upstream Repedea, 24.06.1997, S.R.; 1 spec. f. h. Repedea, 2.06.1997, M.I.; 2 specs Vișeuț river, 12 km upstream Borșa, 20.08.1997, P.C.; 1 spec. Piatra Craiului Mts, Sățic, Scorobia Valley, Padina Vălimăreanu, 5.07.2000, P.C.; 1 spec. Piatra Craiului Mts, Valea lui Ivan, 27.06.2002, P.C.; 1 spec. Piatra Craiului Mts, Sățic, Valea Lungă, 29.06.2002, P.C.; 2 specs Piatra Craiului Mts, Măgura, 2.07.2002, P.C.; 1 spec. Coșnea f. h., Poienile de sub Munte, 18.06.2003, P.C.; 1 spec. valley of Socolău river, 2 km upstream the confluence of the Socolău and Rica river, 19.07.2004, S.R.; 1 spec. valley of Coșnea river, Poienile de sub Munte, 20.07.2004, S.R.; 5 specs Făgăraș Mts, valley of Otic river, 4.08.2004, S.R.

Paracorymbia pallens (Brullé, 1832)

Băile Herculane, 1 spec. 9.06.1942, W.E., 16 specs 19-22.07.1956, S.N., 23 specs 24-29.05.1971, S.N. (Fig. 1 D).

Paracorymbia stragulata (Germar, 1824)

5 specs Spain, Huesca, Selva de Oza, 18.07.1975, G.C.; 3 specs Spain, Zaragoza, Puerto de Sos, 29.06.1976, G.C.

Paracorymbia tesseraula (Charpentier, 1825)

1 spec. without data, K.D.; Băile Herculane, 1 spec. 23.07.1956, S.N., 2 specs 5.07.1958, S.N., 70 specs 1-15.07.1960, S.N., 1 spec. 4.07.1962, P.G.A., 4 specs 4.07.1964, S.N., 3 specs 12.06.1965, S.N., 1 spec. 2.07.1967, S.N., 5 specs 15-20.07.1974, S.N., 1 spec. 5.07.1976, S.N., 2 specs 10.07.1977, S.N., 23 specs 12-14.07.1982, S.N., 3 specs 19.05.1985, S.N.; 1 spec. Bârnova, 9.06.1958, S.N.; 5 specs Desești, 17-18.07.1998, M.I., P.A.; 2 specs Mara Valley, 17-18.07.1998, M.I.; 1 spec. Țibleș Mts, Dragomirești, Lunca lui Cosiță, 22.06.2003, P.C.; 1 spec. Țibleș Mts, Săliște, valley of Șandra rivulet, 23.06.2003, P.C.

Pedostrangalia Sokolov, 1897*Pedostrangalia (Etoforus) pubescens* (Fabricius, 1787)

1 spec. Răchitele (Cocu), 30.06.1949; Băile Herculane, 16 specs 8-23.07.1956, S.N., 53 specs 1-15.07.1960, S.N., 1 spec. 4.07.1964, S.N., 1 spec. 19.07.1966, S.N., 1 spec. 7.07.1976, P.G.A., 1 spec. 30.05.1977, S.N., 9 specs 1-27.07.1977, S.N.; 1 spec. 13.07.1982, S.N., 3 specs 28.06.1986, S.N.; 3 specs 15.06.1987, S.N. (Fig. 2 A).

Pedostrangalia (Pedostrangalia) revestita (Linnaeus, 1767)

1 spec. Craiova, 15.07.1950; 1 spec. Gutâi Mts, Bodi Lake, Bodi Ferneziu, 29.05.1953, S.N. (Fig. 2 B).

Pedostrangalia (Sphenalia) verticalis (Germar, 1822)

3 specs without data, F.Ed.; Babadag forest, 5 specs 20-23.06.1955, S.N., 1 spec. 30.06.1956, S.P.X., 9 specs 20.06.1958, S.N., 15 specs 20.06.1963, S.P.X., 7 specs 24-29.05.1970 S.N.; 2 specs Bulgaria, Varna, 4.06.1967, S.N.; 5 specs Croatia, Punat, Island Krk, 16.06.1983, R.P.; 1 spec. Celic Dere, Telița, 27.05.2005, S.R. (Fig. 2 C).

Pseudovadonia Lobanov, Danilevsky & Murzin, 1981*Pseudovadonia livida* (Fabricius, 1776)

11 specs without data, K.D., F.Ed.; 1 spec. București, without other data, M.A.L.; 3 specs Sighișoara, without other data, D.Fr.; Comana, 6 specs without other data, M.A.L., 1 spec. 30.05.1941, 2 specs 15.06.1955, S.N., 4 specs 27.06-12.07.1959, S.N., 5 specs 25.06.1962, D.I., 1 spec. 18.IX.1964, R.A., 2 specs 23.07.1965, N.S., 2 specs 5.07.1972, S.N., 6 specs 22-23.06.1976, W.M., M.I., 2 specs 3.06.1998, S.A.; Valu lui Traian, 1 spec. 05.1950, 8 specs 16-17.06.1955, S.P.X., 1 spec. 13.07.1957, S.P.X., 9 specs 19.06.1958, S.P.X., 2 specs 6.07.1959, S.P.X., 1 spec. 30.06.1961, I.A., 17 specs 22.06.1962, R.A.; București, Copăceni, 1 spec. 17.06.1951, S.P.X., 1 spec. 14.06.1953, S.P.X.; 1 spec. Eforie Sud (Carmen Sylva), 22.06.1952, S.N.; 1 spec. Căineni, 26.07.1952, S.N.; 1 spec. Marila, Oravița, 1.07.1953, S.N.; 2 specs Ișalnița (Dolj), 6.06.1954; 1 spec. Băile Episcopiei (Băile 1 Mai), 06.1954, S.I.; 7 specs Bârsești, Târgu Jiu, 18-20.06.1954, R.A.; 1 spec. Petroșeni, 26.06.1954, R.I.V.; 4 specs București, Andronache, 12.06.1954; 2 specs București, Mogoșoaia, 29.07.1954; 3 specs Valea lui David, 06.1955 S.N.; 1 spec. Gheorghieni, 5.07.1955; 1 spec. Ditrău, 6.07.1955, R.I.V.; 2 specs Potelu, 9.06.1956, R.I.V.; 4 specs Dăbuleni, 9.06.1956; 5 specs Ocolna, 12.06.1956, R.I.V.; 1 spec. Periș, 19.06.1956; 1 spec. Chiajna, 20.06.1956, S.P.X.; 1 spec. Târgu Mureș, 14.06.1956, S.N.; 2 specs Breasta, 21.07.1956, S.P.X.; Băile Herculane, 2 specs 23.07.1956, S.N., 2 specs 4.07.1964, S.N., 22 specs 20.06.1970, R.A., 1 spec. 1.07.1970, S.N., 49 specs 2.06.-17.07.1977, S.N.; Budești, 14 specs 5-6.07.1957, R.A., S.P.X., 12 specs 14-15.06.1959, S.N., 4 specs 3.06.1965, N.S.; Măneciu Ungureni, 4 specs 30.07.1957, R.A., 2 specs 22.IX.1967, S.P.X.; Alexandria, Nanov, 1 spec. 31.05.1958, R.A., 11 specs 26.06.1980, D.I., P.C., S.R., M.I.; 1 spec. Alexandria, 1.06.1958, R.A.; Căldărușani, 1 spec. 12.06.1958, R.A., 7 specs 30.05.-15.07.1959, R.A., 10 specs 21.06.1960, R.A., 3 specs 9.06.1978, S.R.; 2 specs

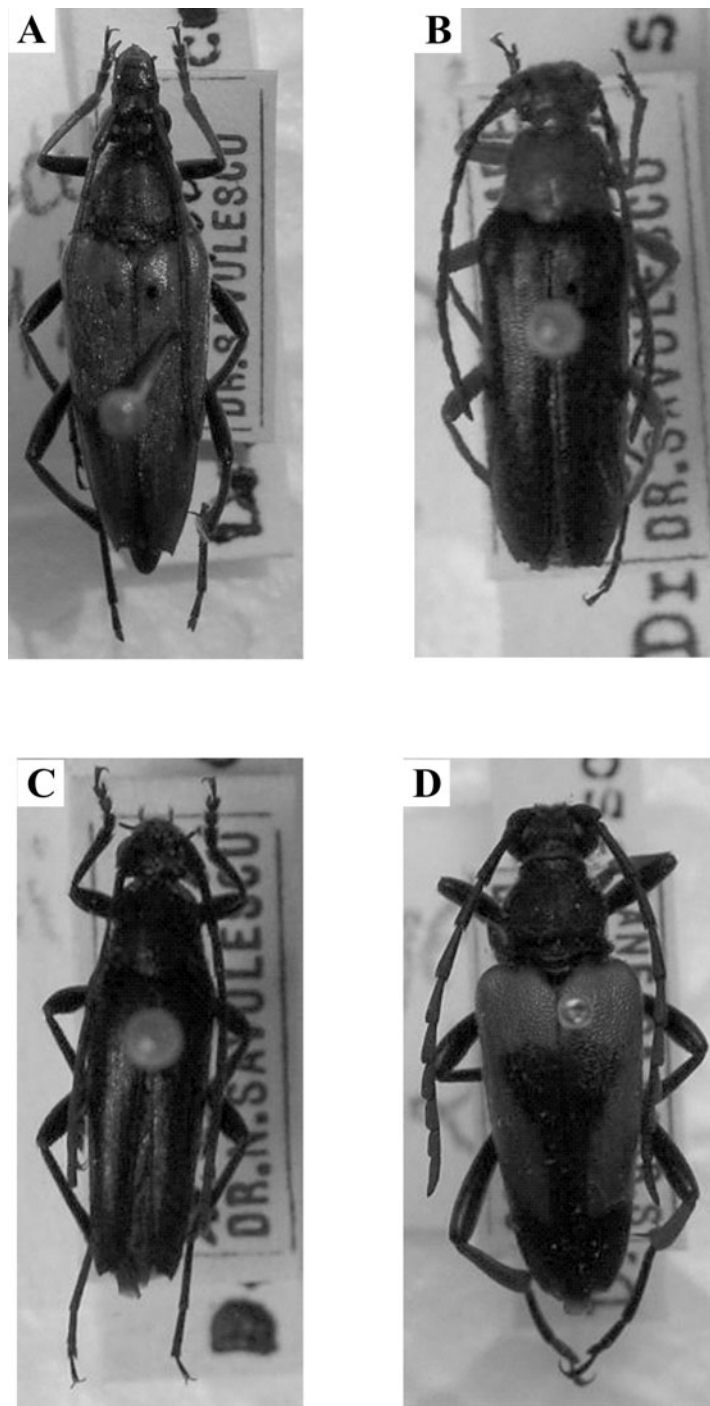


Fig. 2 – A, *Pedostrangalia pubescens*; B, *Pedostrangalia revestita*; C, *Pedostrangalia verticalis*, D, *Stictoleptura cordigera*.

Nifon, Hamcearca, 20.06.1958, S.I.; 1 spec. Bucegi Mts, Sinaia, Cumpătul, 7.07.1958, R.A.; 2 specs Bucegi Mts, Sinaia, Tufa Valley, 8.07.1958, R.A.; 1 spec. Suceava, Scheia forest, 11.06.1959, N.I.; 11 specs Periș, 18.06.1959, R.A.; 1 spec. Făgăraș Mts, Pleasa Peak, 12.08.1959, S.N.; 2 specs Făgăraș Mts, Buda Peak, 12-21.08.1959, S.N.; 1 spec. Făgăraș Mts, Otic Peak, 15-16.08.1959, S.N.; 3 specs Făgăraș Mts, Capra Peak, 17.08.1959, S.N.; Brănești, Pasărea forest, 33 specs 6-22.06.1959, S.N., 1 spec. 13.06.1978, G.N.; Budești, 12 specs 14-15.06.1959, S.N., 4 specs 5.06.1979, W.M.; 2 specs Lacul Sărat, 17.06.1959, S.N.; 1 spec. Perișor, 7.06.1960; 1 spec. Oltina, 11.06.1960, S.N.; 6 specs Cernica, 5.07.1960, R.A.; Danube Delta, Caraorman forest, 2 specs 19.07.1960, S.I., 1 spec. 10.05.1967, S.P.X.; 2 specs Baia de Aramă, 17.07.1961, S.N.; 2 specs Craiova, 20.08.1960; 1 spec. Ciovârnașani, 24.06.1961, S.N.; 6 specs Esecchioi, 7.06.1961, S.N.; 2 specs Șelimbăr, 4.06.1962, S.N.; Babadag, 2 specs 20.06.1962, S.N., 3 specs 20.06.1963, S.P.X., 12 specs 22.06.1993, M.I.; Mangalia, Comarova forest, 3 specs 2-3.06.1962, S.N., 16 specs 30.05.1963, S.P.X., P.G.A.; 5 specs București, Pantelimon, 10.06.1962, S.P.X.; Hagieni forest, 7 specs 4-19.06.1962, R.A., P.G.A., 3 specs 19.06.1964, S.P.X., 4 specs 6.-7.06.1965, W.M., 2 specs 30.06.1973, P.G.A.; 1 spec. Techirghiol, 20.06.1962, S.P.X.; 21 specs Constanța (Palas), 21-23.06.1962, R.A.; 5 specs Brănești, Pusnicu forest, 5.07.1962, R.A.; 3 specs Vidra, 23.07.1962, S.P.X.; Agigea, 2 specs 29.05.1963, S.P.X., 11 specs 15-24.06.1964, W.M., P.G.A., N.S., R.A., 1 spec. 1.07.1977, A.G.; Greci, 1 spec. 22.06.1963, S.I., 6 specs 6.06.1973, P.G.A.; 1 spec. Danube Delta, C. A. Rosetti, 10.05.1964, S.P.X.; Băneasa, Canaraua Fetii, 8 specs 11.05.-17.07.1964, W.M., S.N., 6 specs 1.06.1965, N.S., S.P.X., 1 spec. 4.07.1980, S.N., 10 specs 26.06.1995, P.C.; 4 specs Oradea, 1.08.1964, N.S.; București, Băneasa forest, 17 specs 3-21.06.1965, S.P.X., N.S., 1 spec. 1.07.1980, B.V.; 37 specs București, Pipera, 20.06.1965, N.S.; 3 specs Brănești, Pasărea forest, 25.06.1965, S.N.; 1 spec. Danube Delta, Periprava, 24.06.1966, N.S.; 1 spec. Curtea de Argeș, 21.06.1967, A.V.; 3 specs Măcin, 26.06.1967, W.M.; 3 specs Niculițel, 27.06.1967, W.M.; 4 specs Cheia 27.07.1967, S.P.X., R.A.; Ieșelnița, 3 specs 7-8.06.1967, N.S., D.I., 8 specs 14.05.1968, P.G.A., 9 specs 30.05.-3.06.1968, S.P.X., 2 specs 16.06.1968, W.M., 20 specs 16-19.06.1970, S.P.X.; Cazane (the Danube Gorges), Mraconia Valley, 9 specs 7.06.1967, N.S., 1 spec. 21.05.1970, S.N.; 1 spec. Sulina, 12.07.1967; 3 specs Gorgota, 4.08.1967, R.A.; 3 specs Bucegi Mts, Sinaia, Valea Rea, 25.08.1967, N.S.; 1 spec. Ada-Kaleh islet, 20.05.1968, W.M.; 2 specs Orșova, 2-12.06.1968, N.S., 1 spec. 1.07.1969, N.S.; Jupalnic, 2 specs 4.06.1968, S.P.X., 2 specs 4.07.1969, N.S.; 1 spec. Bârlad, 13.06.1973, R.A.; 36 specs Niculițel, Cocoș monastery, 8.05.-16.07.1973, P.G.A., W.M.; 3 specs Carei, 6.07.1973, P.G.A., 3 specs France, Le Muy (83), 12.06.1974, B.P.; 6 specs France, Les Adrets de Frejus, bord d'Argentiere, 14.06.1974, B.P.; 1 spec. Chiajna, 20.06.1976, S.P.X.; 1 spec. Bozovici, 8.07.1976, P.G.A., 1 spec. Utviniș forest, 21.06.1977, A.M.; Zăvestreni forest, 14 specs 23-24.06.1977, P.G.A., S.R., 2 specs 21.06.1978, S.R., 2 specs 15.06.1979, S.R.; 8 specs Roșiori de Vede, 24-25.06.1977, N.G.; 31 specs Erghevița, 29.06.1977, S.N.; 2 specs Moara Vlășiei, 9.06.1978, A.G.; 1 spec. Căscioarele forest, 18.06.1979, A.I.; 1 spec. Drăgănești Vlașca, 19.06.1979, W.M.; 2 specs Țigănești forest, 20.06.1979, W.M.; 1 spec. Frumoasa, 23.06.1979, A.I.; 1 spec. Snagov, 14.06.1979, S.P.X.; 12 specs Nicolae Titulescu, Palanca forest, 24.06.1980, D.I., S.R., M.I.; 1 spec. București, Băneasa forest, 1.07.1980, B.V.; 3 specs Crevedia, 10.07.1980, S.R., M.I.; 2 specs Scornicești, 23-24.07.1980, S.R., M.I.; 6 specs Alexandria, Nanov forest, 26.06.1980, P.C., D.I., S.R.; 6 specs

Bucovăț forest, 18.06.1981, W.M.; 3 specs Segarcea, 19.06.1981, P.C.; 5 specs Cobia forest, 19.06.1981, W.M.; 3 specs Sarului forest, 22-26.06.1981, A.G.; 13 specs Băilești, 18-20.06.1982, S.R., M.I.; 17 specs Podari, 20.06.1982, D.D., S.R., M.I.; 16 specs Târnava, 21.06.1982, D.D., S.R., M.I.; 8 specs Gura Motrului, 21.06.1983, S.R., M.I., P.C.; 8 specs Strehaia, 24.06.1983, M.I.; 3 specs Balota, 12.07.1983, S.R., M.I.; 16 specs Hinova, 6-7.06.1984, S.R., M.I., P.C.; 11 specs Schitu Topolniței, 8.06.1984, S.R., P.C.; 6 specs Livada, 12.06.1985, P.G.A., S.R., M.I.; 1 spec. Turulung Vii, 13.06.1985, M.I.; 2 specs Foieni, 15.06.1985, P.C., M.I.; 10 specs Făgăraș Mts, Poiana Neamțului, 19.07.1985, M.I., S.R.; 36 specs Sihlea, 23.06.1987 P.C., M.I.; 53 specs Spătaru forest (Buzău Dep.), 24.06.1987, P.C., M.I., C.I.; 2 specs Dealul Sasului, 4.07.1990, A.M.; 7 specs Piatra Craiului Mts, Plaiu Foi chalet, 11-12.07.1990, S.R.; 5 specs Piatra Craiului Mts, valley of Bârsa Tămașului river, 12.07.1990, N.I., S.R.; 22 specs Cloșani (Padeș), 16-18.06.1992, S.R., P.C.; 117 specs Lupșa Valley, Motru Sec, 18.06.1992, S.R., R.N.; 1 spec. Tismana, 31.07.1992, A.G.; 1 spec. Slava Rusă, 06.1993; 14 specs Aghighiol, 12.06.1993, M.I.; 3 spec. Enisala, 12.06.1993, M.I.; 10 specs Beștepe, 13-14.06.1993, M.I.; 1 spec. Aușeu, 25.06.1994, S.A.; Dumbrăveni forest, 16 specs 18-21.05.1994, P.C., A.G., H.C., 6 specs 22-31.06.1995, A.M.; 5 specs Moisei ("Izvorul lui Dragoș" f. h.), 13.07.1995, S.A., M.I.; 4 specs Strâmtura, "Podul Slătioarei" f. h., 3.07.1995, P.C.; 2 specs Bârsana (Oncești), 10.07.1995, H.C.; 1 spec. Furnica, Dumbrăveni forest, 18.06.1996, P.C.; 3 specs Negureni forest, 21.06.1996, P.C.; 46 specs Săpânța, Colibi f. h., 5-13.07.1996, M.I., P.C., S.A., H.C.; 1 spec. Săpânța, Poiana Brustani, 13.07.1996, M.I.; 7 specs Repedea f. h., 22.06.-2.07.1997, M.I., S.R., P.C.; 7 specs Elmo clearing, 2 km upstream Repedea, 24.06.1997, P.C., S.R.; 21 specs valley of Frumușeaua river, Crasna Vișeuului, 23-29.06.1997, S.R., S.A., P.C.; 2 specs Smereceni clearing, 7 km upstream Repedea, 27.06.1997, S.A.; 5 specs Letca Nouă, 7.06.1998, P.S.M.; 2 specs Rona de Sus, 20.07.1998, P.C.; 1 spec. Bistra, 21.07.1998, P.An.; 1 spec. Piatra Craiului Mts, Crăpătura Valley, 8.06.2000, P.C.; 3 specs Piatra Craiului Mts, Sățic, Valea Scheilor chalet, 5.07.2000, S.A.; 1 spec. Piatra Craiului Mts, Sățic, Scorobia Valley, Padina Vălimăreanu, 5.07.2000, V.A.; 2 specs Piatra Craiului Mts, Gura Bârsei chalet, 1.06.2000, P.C.; 4 specs Piatra Craiului Mts, Sățic, Valea Lungă, 29.06.2002, P.C.; 3 specs Piatra Craiului Mts, Măgura, 2.07.2002, P.C.; 5 specs Piatra Craiului Mts, Râioasa Valley, 7.06.2000, P.C.; 8 specs Coșnea f. h., Poienile de sub Munte, 15-20.06.2003, P.C., S.D.; 3 specs Leordina, 15.06.2003, S.R., P.C.; 1 spec. valley of Cvașnița river, Poienile de sub Munte, 15.06.2003, P.C.; 2 specs valley of Idișor rivulet, Săliște, 22.06.2003, S.R.; 1 spec. valley of Baicu river, 5.5 km upstream Dragomirești f. h., 21.06.2003, S.R.; 2 specs valley of Șandra rivulet, Săliște, 23.06.2003, P.C.; 2 specs Piatra Craiului Mts, Sățic, 22.06.2005, M.I.

Rutpela Nakane & Ohbayashi, 1957

Rutpela maculata (Poda, 1761)

2 specs without data, K.D.; 4 specs Râmnicu Vâlcea, without other data, F.Ed.; Retezat Mts, 3 specs 11.06.1946; 1 spec. 25.07.1956, S.N.; 1 spec. Slânic Prahova, 1.08.1949; 1 spec. București, Cernica forest, 2.06.1950; Comana, 1 spec. 5.07.1951, S.N., 1 spec. 17.06.1977, D.D., 1 spec. 30.06.1981 D.I.; Oravița, 2 specs 1.07.1953, 4 specs 2-5.08.1977, S.N.; Băile Herculane, 1 spec. 12.07.1953, 6 specs 23.07.1956, S.N., 31 specs 2-15.07.1960, S.N., 1 spec. 4.07.1964 S.N., 12 specs

4.07.1966, S.N., 66 specs 1-5.08.1975, S.N., 26 specs 15-19.05.1977, S.N.; 33 specs 10-15.07.1977, S.N., 1 spec. 4.06.1983, G.V., 1 spec. 12.07.1984, P.C.; 2 specs Ciucaș Mts, Cheița Valley, 26.08.1953; Retezat Mts, Gura Zlata, 1 spec. 26.07.1956, S.N., 2 specs 1.08.1976, P.C., 7 specs 16-28.07.1981, P.C.; 2 specs Sinaia 9.07.1958, R.A.; 7 specs București, Băneasa forest, 18.06.-4.07.1959, S.N.; 2 specs Făgăraș Mts, Pleașa Peak, 12.07.1959, S.N.; Brănești, Pasărea forest, 1 spec. 22.06.1959, S.N., 2 specs 10.06.1977, S.R.; 1 spec. Pitești, 3.06.1960, S.N.; 1 spec. Ciovârșani, 24.06.1961, S.N.; 2 specs Tulnici, 20.07.1962, R.A.; 1 spec. Baiului Mts, Piatra Mare, 24.07.1962, S.N.; 1 spec. Greșu, 21.07.1962, S.P.X.; 8 specs Moldova Nouă, 29.06.1964, S.N.; 4 specs France, Dép. Pyrénées Atlantique, Larrau, 06.1964, R.J.; 2 specs France, Massif de la Sainte Baume, Var, 07.1965, R.J.; 1 spec. Lacul Roșu, 23.07.1966, P.G.A.; 1 spec. Cazane (the Danube Gorges), 10.06.1967, N.S.; 4 specs Cheia, 27.07.1967, R.A.; 2 specs Ieșelnița, 2-3.05.1968, S.P.X.; 2 specs Brașov, 26-27.06.1971, S.P.X.; Băile Herculane, Domogled Mt., 3 specs 3.07.1968, B.V., 2 specs 6.07.1976, P.G.A.; 1 spec. Răcătău, 27.07.1971; 2 specs France, Les Adrets de Frejus, bord d'Argentiere, 14.06.1974, B.P.; 1 spec. Valley of Crișul Pietros river, 1.07.1976, A.G.; 1 spec. Retezat Mts, Gura Apei, 8.08.1976, P.C.; 1 spec. Slătioara, Râșca, 4.08.1978, B.M.; 2 specs Tinosu, 27.06.1980, B.V.; 1 spec. Retezat Mts, Rotunda, 2.08.1980, B.V.; 4 specs Spain, Pirineo Aragonés, Valle de Añiselo, 4.06.1981, B.F.; 1 spec. Piatra Mare Mts, Bunloc, 24.07.1984, S.R.; 30 specs Făgăraș Mts, Poiana Neamțului, 18-21.07.1985, D.I., S.R., M.I., C.I.; 3 specs Călinești Oaș, 31.07.1985, P.C., G.V.; 6 specs Talna Valley, Negrești Oaș, 1.08.1985, G.V.; 14 specs Luna Șes, Negrești Oaș, 1.08.1985, P.C.; 1 spec. Vlădeasa Mts, Valea Drăganului, 7.08.1989, R.D.; 1 spec. France, Département Pyrénées Orientales, 21.06.1990; 1 spec. Piatra Craiului Mts, Plaiu Foi chalet, 12.07.1990, S.R.; 1 spec. Căciulata, 1.08.1990, G.N.; 3 specs Lupșa Valley, Motru Sec, 18.06.1992, S.R., R.N.; 2 specs Tismana, 31.07.1992, A.G.; 4 specs Băile Chirui, Lueta, 2.08.1993, H.C.; 17 specs Făgăraș Mts, Cârțișoara, Vama Cucului, 29.07.- 2.08.1994, P.C., S.A., H.C.; 8 specs Călinești, Văleni (Valea Săcăturii, “La Feredeaua”), 7.07.1995, M.I., P.C.; 1 spec. Moisei (“Izvorul lui Dragoș” f. h.), 13.09.1995, P.C.; 7 specs Săpânța, Brustani f. h., 2.07.1996, P.C., M.I., 1 spec. Săpânța, Poiana Brazilor, 7.07.1996, P.C., 8 specs Săpânța, Colibi f. h., 9-12.07.1996 M.I., S.A., H.C., 1 spec. Săpânța Valley, 13.07.1996, S.M.; 1 spec. Lotru Mts, Voineasa, 1.08.1996, P.S.M.; 12 specs valley of Frumușeaua river, Crasna Vișeuului, 25.06.-29.08.1997, S.R., P.C., R.E.; 1 spec. Smereceni clearing, 7 km upstream Repedea, 27.06.1997, S.A.; 1 spec. Elmo clearing, 2 km upstream Repedea, 29.06.1997, S.A.; 3 specs Repedea f. h., 2.07.1997, M.I.; 3 specs Bistra valley, 4 km upstream Bistra, 26.08.1997, P.C.; 2 specs Lințești, 13.07.1998, P.S.M.; 1 spec. Tătaru dam on Mara river, Desești, 19.07.1998, P.C.; 6 specs Mara Valley, 2 km upstream Mara, Desești, 17.07.1998, P.An.; 28 specs Colnic f. h., 2 km upstream Mara river, Desești, 17-18.07.1998, M.I., P.S.M., P.An., V.A.; 3 specs Pleșca chalet (800 m), Ocna Șugatag, 22.07.1998, P.S.M.; 2 specs left bank of Coșeu river, Sârbi, Budești, 19.07.1998, P.C., M.I.; 1 spec. left bank of Coșeu river, Cornești, Giulești, 19.07.1998, M.I.; 3 specs Rona de Sus, 20.07.1998, P.C., P.S.M., V.A.; 10 specs 1 km South of Izvoare health resort, Desești, 23.07.1998, M.I., P.S.M., V.A.; 2 specs Steda Valley, Desești, 29.07.1998, P.C., V.A., P.S.M.; 1 spec. Piatra Craiului Mts, valley of Bârșa Mare river, 2 km upstream Gura Bârsei chalet, 4.07.2000, P.C.; 2 specs Piatra Craiului Mts, Sățic, Scorobia Valley, Padina Vălimăreanu, 5.07.2000, P.C.; 1 spec. Piatra Craiului Mts, Speriata Valley,

6.07.2000, M.S.; 1 spec. Piatra Craiului Mts, Garofița Pietrei Craiului chalet, 7.07.2000, M.S.; 2 specs Piatra Craiului Mts, Sățic, Drăgoslăveni Valley, 8.07.2000, S.A.; 17 specs 17 km far from Reșița, towards Văliug, 10.08.2001, P.C., S.R., S.A.; 2 specs Coșnea f. h., Poienile de sub Munte, 17.06.2003 S.Mi.; 4 specs valley of Pop Ivan river, Maramureș Mts, 17.06.2003, S.R., P.C., S.Me.; 1 spec. valley of Hututeanca river, Maramureș Mts, 17.06.2003, S.R., 1 spec valley of Repedea river, 500 m upstream Repedea f. h., 18.06.2003, S.R.; 2 specs Țibleș Mts, valley of Baicu river, Dragomirești, 21.06.2003, P.C.; 1 spec. Țibleș Mts, valley of Șandra river, Săliște, 23.06.2003, S.R.; 3 specs valley of Jiu river, 7.07.2004, P.A., B.C.; 1 spec. Locurele hermitage, 8.07.2004, B.C.; 2 specs the confluence of the Pop Ivan and Hututeanca rivers, 12 km upstream Crasna Vișeuului, 18.07.2004, P.C.; 1 spec. Maramureș Mts, Făina, valley of Vaser river, 21-22.07.2004, P.C.; 1 spec. Maramureș Mts, Bardău, 22.07.2004, P.C.; 1 spec. valley of Vișeu river, 2 km upstream Bistra, 24.07.2004, B.C.; 2 specs Coșnea f. h., Poienile de sub Munte, 19-25.07.2004, P.C., C.G.; 1 spec. Piatra Craiului Mts, Brusturet chalet, 9.08.2004, S.R.; 1 spec. Făgăraș Mts, Vidraru Lake, Cumpăna chalet, 3.08.2004, S.R.; 1 spec. Făgăraș Mts, valley of Otic river, 4.08.2004, S.R.; 16 specs Făgăraș Mts, Valea cu Pești, (850 m), 6.08.2004, S.R., S.M.; 2 specs Făgăraș Mts, Vidraru Lake, Moliviș, 7.08.2004, S.R.; 8 specs Făgăraș Mts, Vidraru Lake, Stan Valley, 7.08.2004, S.R., S.M.

Stenurella Villiers, 1974

Stenurella bifasciata (Müller, 1776)

4 specs without data, C.R.; 1 spec. Besançon, without other data, M.A.L.; 7 specs Râmnicu Vâlcea, without other data, F.Ed.; 12 specs București, without other data, M.A.L.; 2 specs Măcin, without other data, M.A.L.; Babadag, 1 specs without other data, F.Ed., 1 spec. 29.06.1956, S.P.X.; Comana, 9 specs without other data, M.A.L., 1 spec. 4.07.1958, S.P.X., 14 specs 6-27.06.1959, S.N., 5 specs 24.06.1965, S.N., 5 specs 5.07.1972, S.N.; 2 specs Gemenea, Brătulești, Voinești, 1.06.1950, 1 spec. Crăciuna (near Focșani?), 10.06.1950; 1 spec. Ciucaș 28.06.1951; 1 spec. Filipești (Bogdănești), 30.06.1951; 1 spec. Adunații Copăceni, 14.06.1953, S.P.X.; 1 spec. Izvoarele (Teleajen), 27.07.1954; 1 spec. Chiciureni (Măneciu), 28.07.1954; 1 spec. Budești, 28.06.1955; 4 specs Oltina, 20.07.1956, S.N.; Băile Herculane, 2 specs 19-23.07.1956, S.N., 1 spec. 2.06.1965, S.N., 1 spec. 12.06.1967, S.N., 1 spec. 7.07.1968, B.V., 1 spec. 5.08.1971 S.N., 11 specs 11.06.-1.07.1977, S.N.; 1 spec. Retezat Mts, Gura Zlata, 26.07.1956, S.N.; Valu lui Traian, 1 spec. 13.07.1957, S.P.X., 8 specs 19-21.06.1958, S.P.X.; 18 specs Alexandria, 1.06.1958, R.A.; 1 spec. Valea lui David, 10.06.1958, S.N., 2 specs 6.07.1959 S.P.X., 1 spec. 22.06.1962, R.A.; 2 specs Iași, Copou, 10.06.1958, S.N.; Greci, 1 spec. 15-19.06.1958, S.P.X., 1 spec. 11.07.1960, S.I.; 3 specs Măcin Mts, Nifon, 17-20.06.1958, S.I., 1 spec. 8.07.1964, S.I.; 3 specs Căldărușani, 12.07.1958, R.A.; 1 spec. Sfântu Gheorghe, 2.08.1958, B.G.; Brănești, Pasărea forest, 35 specs 19.06.1959, S.N., 1 spec. 9.08.1961, R.A., 3 specs 24-25.06.1965, S.N., 1 spec. 10.06.1977, N.G.; 1 spec. 22.06.1963, S.I., 1 spec. 7.07.1964 S.I.; 2 specs Periș, 18.06.1959, R.I.V.; 1 spec. Știoborâni (Stolești), 07.1959; 1 spec. Făgăraș Mts, Pleașa Peak, 12.08.1959, S.N.; 3 specs Cernica, 5-15.08.1960, R.A.; 1 spec. Craiova, 20.08.1960; 1 spec. Southern Dobrogea, 17.06.1961, S.N.; 1 spec. Bârlad, 28.09.1961, R.A.; 1 spec. Mangalia, Comarova forest, 2.06.1962, P.G.A.; Hagieni, 1

spec. 19.06.1962, R.A., 1 spec. 6.06.1963, D.I.; 4 specs Tulnici, 20-22.07.1962, R.A.; 6 specs Vidra (Vrancea), 17-23.07.1962, R.A.; 1 spec. Greșu, 21.07.1962, S.P.X.; 2 specs Agigea, 27.05.1963, S.P.X.; 1 spec. valley of Râmna river, 15.07.1963; 1 spec. Băneasa, Canaraua Fetii, 17.07.1964, S.N.; 5 specs France, Département Var, Sainte Beaume Mts, 07.1965, R.J.; 5 specs Breznița, 6.07.1965, S.N.; 2 specs Cireșu, 7.07.1965, S.N.; Niculițel, 2 specs 27.06.1967, W.M., 2 specs 1-7.07.1975, P.G.A.; 1 spec. Ploiești, 1.08.1967, R.A.; 1 spec. Ogradena, 5.06.1968, S.P.X.; 4 specs Orșova, 28.06.1969 N.S.; 1 spec. Grațca, 3.07.1969, N.S.; 1 spec. Ieșelnița, 16.06.1970, R.A.; 1 spec. Vrancea Mts, Lepșa, 29.06.1971; Niculițel, Cicoș monastery, 5 specs 9-10.07.1973, P.G.A., C.A., 1 spec. 7.07.1975, P.G.A.; 2 specs Căineni, 9.07.1973, S.N.; 17 specs Erghevița, 29.06.1977, S.N.; 1 spec. Oravița, 5.08.1977 S.N.; 1 spec. Zăvestreni forest, 1.09.1977, S.R.; 2 specs Budești, 5-7.06.1979, W.M., D.A.; 1 spec. Buru, 6.08.1979, A.G.; 1 spec. Nicolae Titulescu, Palanca forest, 23.06.1980, S.R.; 1 spec. Plopiș, Sișești, 27.06.1980, A.G.; 1 spec. Scornicești, 23.07.1980, S.R.; 6 specs Spain, Zamora, 1.07.1980, B.F.; 7 specs Bistreț, 23.06.1981, S.R., M.I.; 1 spec. Băilești, 18.06.1982, S.R.; 13 specs Podari, 20.06.1982, S.R., M.I.; 1 spec. Gura Motrului, 21.06.1983, P.C.; 7 specs Strehaiia, 26.06.1983, S.R., M.I, P.C.; 1 spec. Balota, 12.07.1983, S.R.; 13 specs Turnu Severin, Mușa forest, 5.06.1984, S.R.; 5 specs Schitu Topolniței, 8.06.1984, P.C.; 1 spec. Târgu Cărbunești, 11.07.1984, D.I.; 4 specs Sihlea forest (Vrancea Dep.), 23.06.1987, M.I.; 3 specs Costești (Buzău Dep.), Spătaru forest, 24.06.1987, M.I.; 1 spec. Lupșa Valley, Motru Sec, 18.06.1992, S.R.; 8 specs Limanu, Hagieni forest, 10-12.07.1992, P.C., M.I.; 1 spec. Agighiol, 12.06.1993, M.I.; 2 specs Beștepe, 13.06.1993, M.I.; 2 specs Slava Rusă, Babadag forest, 22.06.1993, M.I.; 1 spec. Cheile Gârliștei (Caraș-Severin), 8.08.2001, P.C.

Stenurella melanura (Linnaeus, 1758)

8 specs Carpați Mts, Broșteni, without other data, M.A.L.; 2 specs Azuga, without other data, F.Ed.; 1 spec. Slatina, without other data, F.Ed.; 1 spec. Găiești, without other data, F.Ed.; 2 specs Predeal, without other data, F.Ed.; 2 specs Slănic Moldova, 26.07.1949; 1 spec. Vânători Neamț, 11.07.1950; 2 specs Voineasa, Lotru Valley, 30.06.1952, S.N.; 1 spec. Cheița Valley, 22.08.1953; Băneasa, Canaraua Fetii, 1 spec. 24.06.1955, S.N., 4 specs 14.07.1966, S.N.; Valu lui Traian, 1 spec. 17.07.1955, 1 spec. 6.07.1959, S.P.X.; 4 specs Oltina, 26.06.1956, S.N.; 3 specs Luncavița, 26.06.1956, S.P.X.; Băile Herculane, 3 specs 19.06.1956, S.N., 10 specs 23.07.1956, S.N., 1 spec. 19.06.1959, S.N., 1 spec. 14.07.1960, S.N., 4 specs 4.07.1964, S.N., 1 spec. 2.06.1965, S.N., 1 spec. 5.08.1971, S.N., 1 spec. 1.07.1972, S.N., 23 specs 1-3.08.1975 S.N., 1 spec. 14.07.1976, P.G.A., 8 specs 11-17.06.1977, S.N., 7 specs 4-17.07.1977, S.N., 1 spec. 21.07.1978, S.N.; Babadag, 1 spec. 30.06.1956, 1 spec. 20.06.1963, S.P.X.; 1 spec. Sighișoara, 13.07.1956; 6 specs Retezat Mts, Gura Zlata, 26.07.1956, S.N.; Greci, 3 specs 17.06.1958, S.I., 1 spec. 1.07.1959, S.I.; 1 spec. Poiana Țapului, 10.07.1958, W.M.; 5 specs Comana, 27.06.1959, S.N.; Oravița, 2 specs 9.07.1959, S.N., 29 specs 1-5.08.1977, S.N.; 2 specs Făgăraș Mts, Pleșa Peak, 12.08.1959, S.N.; 1 spec. Southern Dobrogea, 18.06.1960, S.N.; 3 specs Căldărușani, 21.06.1960, R.A.; 6 specs Sinaia, 12.07.1960, R.A.; 1 spec. Gutâi Mts, 30.07.1960; 3 specs Sibiu, Dumbrava forest, 29.06.1961, P.G.A.; 1 spec. București, 9.08.1961, R.A.; Brănești, Pasărea forest, 2 specs 5-7.07.1962, P.G.A., R.A., P.G.A., 24 specs 25.06.1965, S.N., 3 specs 16.06.1966, R.A., 1 spec. 18.06.1978, N.G.; 1 spec. București, Mogoșoaia,

15.06.1962, R.A.; 2 specs Vidra (Focșani), 18-23.07.1962, S.P.X.; 1 spec. Tulnici, 20.07.1962, R.A.; 2 specs Baiului Mts, Piatra Mare, 24.08.1962, S.N.; 1 spec. Bucegi Mts, Poiana Stâinii, 15.08.1963; 3 specs Nifon, Hamcearca, 8.07.1964, S.I.; Moldova Nouă, 2 specs 29.06.1964, S.N., 2 specs 16.07.1964, W.M.; 1 spec. Băneasa, Canaraua Fetii, 17.07.1964, S.N.; 6 specs France, Département Var, Sainte Beaume Mts, 07.1965, R.J.; 1 spec. Cozia Mts, 5.08.1965, A.V.; 14 specs Pojoga, 11-12.07.1965, S.N.; 1 spec. Roșu Lake, 23.07.1966, P.G.A.; 1 spec. Bădila, 29.06.1967, W.M.; 3 specs Suzana monastery, 28.07.1967, S.P.X.; 4 specs Ploiești, 29.07.1967, R.A.; 13 specs Cheia, 27.07.1967, R.A.; 1 spec. Cazane (the Danube Gorges), Baia Nouă, 4.08.1967, N.S.; 1 spec. Grațca, 3.07.1969, N.S.; 3 specs Budești, 15.07.1969, S.N.; 3 specs Italy, Forli, Fumaiolo Mt. (1400 m), 8.08.1970, G.P.; 1 spec. Hagieni forest, 30.06.1973, P.G.A.; 5 specs Niculițel, 7.07.1975, P.G.A.; 1 spec. Drăgășani, 18.06.1979, W.M.; 8 specs Nicolae Titulescu, Palanca forest, 24-25.06.1980, D.I., M.I., S.R.; 1 spec. București, Băneasa forest, 1.07.1980, B.V.; 1 spec. Balș, Sarului forest, 22.06.1981, A.M.; 2 specs Podari, 20.06.1982, M.I.; 1 spec. Maramureș Mts, Vaser Valley, 20.08.1982, I.A.; 6 specs Bichigiu, Coșbuc, 27.05.1985, R.D., 1 spec. Retezat Mts, Gura Zlata, 30.06.1985, P.C.; 1 spec. Livada (Satu Mare Dep.), 12.06.1985, P.G.A., 5 specs Foieni, 14-15.06.1985, G.N., S.R.; 16 specs Făgăraș Mts, Poiana Neamțului, 19-20.07.1985, D.I.; 2 specs Călinești Oaș, 31.07.1985, P.C.; 1 spec. Halmeu Vii, 31.07.1985, G.V.; 6 specs Piatra Mare Mts, Timișu de Sus, Tamina cascade, 2.08.1986, S.R.; 24 specs Vlădeasa Mts, Valea Drăganului, 7.08.1989, S.R., R.D., 12 specs Piatra Craiului Mts, Plaiu Foi chalet, 12.07.1990, S.R., M.I.; 1 spec. Piatra Craiului Mts, Șpirala Valley, 12.07.1990, S.R.; 1 spec. Piatra Craiului Mts, valley of Bârsa Tâmașului river, 12.07.1990, N.I.; 1 spec. Lupșa Valley, Motru Sec, 18.06.1992, S.R.; 1 spec. Negureni forest, 22.07.1992, A.G.; 4 specs Băile Chirui, Lueta, 2.08.1993, H.C.; 65 specs Făgăraș Mts, Cârțișoara, Vama Cucului, 29.07.-1.08.1994, P.C., S.A.; 1 spec. Băneasa, Canaraua Fetii, 26.06.1995, P.C.; 1 spec. Dumbrăveni forest, 28.06.1995, A.M.; 3 specs Strâmtura (f. h. "Podul Slătioarei"), 3.07.1995, P.C.; 10 specs Călinești, Văleni (Valea Săcăturii), 7.07.1995, P.C., M.I.; 5 specs Moisei (forestry house "Izvorul lui Dragoș"), 13.07.1995, P.C., S.A.; 30 specs Săpâța, Brustani f. h., 2-13.07.1996, M.I., P.C., H.C.; 56 specs Săpâța, Colibi f. h., 5-13.07.1996, M.I., P.C., H.C., S.A.; 4 specs Săpâța, Poiana Brazilor, 7.07.1996, P.C.; 1 spec. Săpâța valley, 12.07.1996, S.M.; 8 specs Săpâța, Nireș f. h., 12.07.1996, P.C.; 3 specs Bistra valley, 28.06.1997, M.I.; 2 specs Bistra valley, 4 km upstream Bistra, 26.08.1997, P.C.; 5 specs f. h. Repedea, 2.07.1997, M.I.; 25 specs valley of Frumușeaua river, 7 km upstream Crasna Vișeuului 23.06.-29.08.1997, S.R., P.C.; 2 specs Vișeuț river, 12 km upstream Borșa, 20.08.1997, P.C.; 2 specs Vișeu valley, 2 km downstream Borșa, 20.08.1997, P.C.; 6 specs Bălăsâna valley, 4 km upstream Baia Borșa, 21.08.1997, P.C.; 7 specs Mara valley, 2 km upstream Mara, Desești, 17.VII.1998, M.I., P.S.M., P.An.; 12 specs Colnic f. h., 2 km upstream Mara, Mara, Desești, 17-18.07.1998, M.I., P.S.M., P.An., V.A.; 1 spec. Pleșca chalet, Ocna Șugatag, 17.VII.1998, P.C.; 1 spec. left bank of Coșeu river, Cornești, 19.VII.1998, P.An.; 17 specs Rona de Sus, 20.VII.1998, P.C., P.S.M., V.A.; 2 specs Bistra, 21.VII.1998, M.I., V.A.; 3 specs 1 km upstream Mara, Mara, Desești, 22.VII.1998, M.I., P.C.; 1 spec. valley of Roșu stream, Pleșca chalet (800 m), Ocna Șugatag, 22.VII.1998, P.S.M.; 1 spec. 1 km south of Izvoare health resort, Desești, 23.VII.1998, V.A.; 2 specs left bank of Mara river, Berbești, Giulești, 24.VII.1998, P.S., V.A.; 1 spec. Mara, Desești, 31.VIII.1998, P.S.M.; 5 specs Piatra Craiului Mts,

Gura Bârsei chalet, 10.06.2000, M.S., 1.06.2002, P.C.; 1 spec. Piatra Craiului Mts, Sătic, Scorobia Valley, Padina Vălimăreanu, 5.07.2000, P.C.; 1 spec. Piatra Craiului Mts, Sătic, Valea Scheilor chalet, 8.07.2000, M.S.; 5 specs 17 km far from Reșița, towards Văliug, 10.08.2001, S.R., P.C.; 2 specs Piatra Craiului Mts, Sătic, Berila Valley, 30.06.2002, P.C.; 7 specs valley of Repedea river, 500 m upstream Repedea f. h., 18.06.2003, S.R.; 2 specs Leordina, 15.06.2003, P.C.; 2 specs Poienile de sub Munte, the confluence of the Rica and Budescu rivers, 14.06.2003, S.R., P.C.; 1 spec. Poienile de sub Munte, Lutoasa Valley, 14.06.2003, P.C.; 6 specs Poienile de sub Munte, Coșnea f. h., 15-16.06.2003, P.C., S.R.; 20 specs valley of Hututeanca river, 17.06.2003, S.R., S.Me.; 5 specs valley of Baicu river, 550 m upstream Dragomirești f. h., 21.06.2003, P.C., S.R.; 3 specs Țibleș Mts, valley of Idișor rivulet, 22.06.2003, S.R.; 1 spec. North Mangalia, Olimp resort, 20.07.2003, S.R.; 10 specs valley of Pop Ivan river, 19.07.2004, S.R.; 4 specs the confluence of the Pop Ivan and Hututeanca rivers, 12 km upstream Crasna Vișeuului, Maramureș Mts, 18.07.2004, P.C.; 8 specs Coșnea f. h., Poienile de sub Munte, 19.07.2004, P.C., C.G.; 11 specs valley of Coșnea river, Poienile de sub Munte, 20.07.2004, S.R.; 6 specs Făina, valley of Vaser river, Maramureș Mts, 21.07.2004, P.C., C.G.; 2 specs valley of Făina river, Maramureș Mts, 22.07.2004, S.R.; 17 specs valley of Vișeu river, 2 km upstream Bistra, 24.07.2004, P.C., S.Me.; 1 spec. the confluence of the Vișeu and Tisa rivers, Maramureș Mts, 24.07.2004, P.C.

Stenurella nigra (Linnaeus, 1758)

2 specs Hațeg Mts (Poiana Ruscă Mts?), without other data, D.Fr.; 2 specs Brașov, without other data, D.Fr.; 3 specs Pitești, without other data, F.Ed.; 11 specs Măcin, without other data, M.A.L.; Gemenea Brătulești, Voinești, 2 specs 24.05.-1-06.1950, 3 specs 18-19.05.1961, R.A.; 3 specs Cernica, 29.05.-9.06.1956; 2 specs Târgu Mureș, 14.06.1956, S.N.; 1 spec. Tismana, 3.06.1959, S.P.X.; 1 spec. Periș, 18.06.1959, R.I.V.; 2 specs Sibiu, Dumbrava forest, 29.06.1961, P.G.A.; Comana forest, 2 specs 24.05.1962, S.N., 11 specs 25.05.1981, S.N.; 1 spec. Esikioi, 25.05.1962, S.N.; Moldova Nouă, 1 spec. 23.05.1963, 1 spec. Baia Mare, 7.06.1963, R.A.; 1 spec. 29.06.1964, S.N.; Băile Herculane, 2 specs 14.05.-4.07.1964, P.G.A., 3 specs 17.05.1965, S.N., 1 spec. 15.06.1968, S.N., 1 spec. 25.05.1971, S.N., 28 specs 17.06.-10.07.1977, S.N.; 1 spec. Băneasa, Canarua Fetii, 31.05.1965, S.P.X.; 1 spec. Valea Lungă, 24.05.1967, R.A.; 5 specs Cazane (the Danube Gorges), 10.06.1967, N.S.; Ieșelnița, 5 specs 15.05.-3.06.1968, P.G.A., W.M., S.P.X., 1 spec. 19.05.1969, W.M., 4 specs 15-20.06.1970, R.A., N.S.; 1 spec. Hungary, Budapest, 18.05.1969, S.P.X.; 4 specs Brănești, Pasărea forest, 7-9.07.1970, S.N.; 2 specs Niculițel, Cocoș monastery, 9-10.05.1973, D.I., P.G.A.; 3 specs France, Les Adrets de Frejus, bord d'Argentiere, 14.06.1974, B.P.; 1 spec. Clejani, Bălăria forest, 20.06.1978, S.R.; 1 spec. Plopiș, Sișești, 27.06.1980, A.G.; 1 spec. Poiana (Hunedoara), 2.07.1980, A.G.; 1 spec. București, Băneasa forest, 25.05.1981, S.N.; 2 specs Schitu Topolniței, 8.06.1984, P.C., S.R.; 1 spec. Radovan, Panaghia forest, 14.07.1984, A.G.; 2 specs Livada, 12.06.1985, S.R., M.I.; 1 spec. Halmeu Vii, 13.06.1985, P.C.; 8 specs Foieni, 14-15.06.1985, S.R., M.I., P.C.; 1 spec. Piatra Craiului Mts, Plaiu Foiia chalet, 12.07.1990, M.I.; 2 specs Lupșa Valley, Motru Sec, 18.06.1992, S.R.; 1 spec. Băile Chirui, Lueta, 2.08.1993, H.I.; 2 specs Strâmtura (f. h. „Valea Slătioarei“), 3.07.1995, P.C.; 1 spec. Ieud, 4.07.1995, P.C.; 1 spec. Săcel, Izvorul Albastru al Izei, 6.07.1995, P.C.; 4 specs Ciucurova forest, 22.05.1997, P.C.; 14 specs Repedea f. h., 22.06.-2.07.1997, M.I., S.R.; 2 specs Elmo clearing, 2 km

upstream Repedea, 24.06.1997, M.I., S.A.; 11 specs valley of Frumușeua river, 10–12 km upstream Crasna Vișeului, 23–25.06.1997, S.R., S.A.; 1 spec. valley of Bistra river, 28.06.1997, M.I.; 1 spec. Colnic f. h., 2 km upstream Mara, Desești, 17.07.1998, P.S.M.; 1 spec. Piatra Craiului Mts, Râioasa Valley, 9.06.2000, P.C.; 1 spec. Poienile de sub Munte, 500 m upstream the confluence of the Rica and Budescu rivers, 14.06.2003, S.R.; 5 specs Poienile de sub Munte, Coșnea f. h., 18.06.2003, P.C.; 1 spec. Țibleș Mts, Dragomirești f. h., 22.06.2003, P.C.; 2 specs Țibleș Mts, valley of Idișor rivulet, 22.06.2003, P.C., S.Me.; 5 specs Țibleș Mts, Săliște, valley of Șandra rivulet, 23.06.2003, P.C.; 4 specs Celic Dere, Telița, 27.05.2005, S.R.

Stenurella septempunctata (Fabricius, 1792)

1 spec. Râmnicu-Vâlcea, without other data, C.R.; 2 specs Hațeg Mts (Poiana Ruscă Mts?), without other data, D.Fr.; 1 spec. Turnu Roșu (Rottenturn), without other data, D.Fr.; 1 spec. Azuga, without other data, F.Ed.; 3 specs Găiești, without other data, F.Ed.; 1 spec. Slatina, without other data, F.Ed.; 2 specs Bârlad Valley, without other data, M.A.L.; Comana, 6 specs without other data, M.A.L., 1 spec. 24.06.1965, S.N., 9 specs 23.06.-29.07.1976, P.G.A., A.G.; 1 spec. Piatra Neamț, 2.07.1955; 1 spec. Târgu-Mureș, 14.06.1956, S.N.; 2 specs Luncavița, 26.06.1956, S.P.X.; 1 spec. Oltina, 26.06.1956, S.N.; Babadag, 1 spec. 23.06.1955, S.N., 1 spec. 30.06.1956, S.P.X., 6 specs 20.06.1963, S.P.X.; Băile Herculane, 1 spec. 23.07.1956, S.N., 4 specs 14.06.1967, S.N., 3 specs 15.06.1968, S.N., 1 spec. 7.07.1968, B.V., 2 specs 26.08.-26.05.1971, S.N., 6 specs 1-2-08.1975 S.N., 2 specs 14.07.1976, P.G.A., 67 specs 11.06.-17.07.1977, S.N., 1 spec. 3.08.1978, S.N.; 2 specs Jigodin (Harghita Dep.), 20.07.1957; 1 spec. Greci, 20.06.1957, S.I.; Căldărușani, 14 specs 12.06.1958-21.06.1960, R.A., 1 spec. 10.06.1978, A.G.; 6 specs Southern Dobrogea, 4.06.1958, S.N.; 17 specs București, Băneasa forest, 5-6.06.1959, S.N.; 1 spec. Periș, 18.06.1959, R.A.; Brănești, Pasărea forest, 49 specs 5-25.06.1959, S.N., 5 specs 16.06.1966, R.A., S.P.X., 9 specs 10-29.06.1977, S.N., P.G.A., S.R.; 1 spec. Șelimbăr, 25.06.1961, S.N.; 2 specs Agigea, 29.05.1962, D.I.; Hagieni forest, 2 specs 19.06.1962, R.A., 1 spec. 11.06.1964, S.N.; 6 specs București, Mogoșoaia forest, 15.06.1962, S.P.X., R.A.; 8 specs Tulnici, 20.06.1962-20.08.1963, R.A.; Băneasa, Canaraua Fetei, 1 spec. 14.06.1964, S.N., 2 specs 26.06.1995 P.C.; 1 spec. Breznița, 6.07.1965, S.N.; 2 specs Pojoga, 12.07.1965, S.N.; Orșova, 3 specs 23.05.1966, N.S., 2 specs 18.06.1970, S.P.X.; 37 specs Cazane (the Danube Gorges), 25.05.1966-10.06.1967, N.S.; 3 specs Mraconia Valley, 7.06.1967, N.S.; 4 specs Ploiești, 29.07.1967, R.A.; Ieșelnița, 1 spec. 3.06.1968, S.P.X., 4 specs 17-20.06.1970, R.A.; 1 spec. Grațca, Orșova, 28.06.1969, N.S.; Budești, 5 specs 15.07.1969, S.N., 2 specs 5.06.1979, W.M.; 2 specs Vrancea Mts, Lepșa, Tulnici, 29.06.1971; 1 spec. Delta Danube, Sfântu Gheorghe, 10.08.1971, S.P.X.; 5 specs Niculițel, Cocoș monastery, 9-10.06.1973, P.G.A., W.M.; 1 spec. Niculițel, 18.06.1974, D.I.; 1 spec. Băile Herculane, Domogled Mt., 14.07.1976, R.G.; 4 specs Erghevița, 29.06.1977, S.N.; 2 specs Zăvestreni forest, 21.06.1978–15.06.1979, S.R.; 3 specs Drăgănești Vlașca, 18-20.06.1979, W.M.; 23 specs Nicolae Titulescu, Palanca forest, 23-25.06.1980, P.C., S.R., M.I.; 1 spec. București, Băneasa forest, 1.07.1980, B.V.; 1 spec. Scornicești, 23.07.1980, M.I.; 1 spec. Tinosu, 27.07.1980, B.V.; 2 specs Balș, Sarului forest, 22.06.1981, A.G.; 3 specs Podari, 20.06.1982, S.R.; 1 spec. Gura Motrului, 21.06.1983, P.C.; 6 specs Strehaia, 24.06.1983, S.R., M.I., P.C.; 1 spec. Călugăreni, 10.07.1983, P.C.; 1 spec.

Balota, 12.07.1983, M.I.; 1 spec. Schitu Topolniței, 8.06.1984, P.C.; 2 specs Piatra Craiului Mts, Plaiu Foi chalet, 12.07.1990, S.R.; 20 specs Lupșa Valley, Motru Sec, 18.06.1992, R.N., S.R., P.C.; 1 spec. Vâlcan Mts, Sohodol Gorges, 21.06.1992, P.C.; 1 spec. Limanu, Hagieni forest, 11.07.1992, S.R.; 5 specs Slava Rusă, Babadag forest, 22.06.1993, M.I.; 1 spec. Băile Chirui, Lueta, 2.08.1993, H.C.; 1 spec. Dumbrăveni forest, 22.06.1995, A.M.; 1 spec. Negureni forest, 25.06.1995, P.C.; 3 specs Letca Nouă, 7.06.1998, P.S.M.; 1 spec. Lințești, 13.07.1998, P.S.M.; 22 specs Locurele hermitage, 8.07.2004, B.C.

Stictoleptura Casey, 1924

(syn. *Aredolpona* Nakane & Ohbayashi 1957, *Batesiata* Miroshnikov 1998, *Corymbia* Des Gozis 1886)

Stictoleptura cordigera (Fuessly, 1775)

Comana, 5 specs without other data, M.A.L., 1 spec. 9.07.1955, S.N., 1 spec. 19.07.1959, S.N., 3 specs 5.07.1962, S.N., 4 specs 7-17.07.1965, S.N.; 2 specs Iortmac, 23.07.1955, S.N.; Southern Dobrogea, 11 specs 23.07.1955, S.N., 16 specs 10-14.06.1960, S.N., 4 specs 25-27.07.1962, S.N., 2 specs 17.07.1965, S.N.; 1 spec. Oltina, 26.06.1956, S.N.; Băneasa, Canaraua Fetii, 7 specs 7-24.07.1955, S.N., 12 specs 10-14.06.1960, S.N., 9 specs 25-27.07.1962, S.N., 116 specs 16-20.07.1964, S.N., W.M., N.S.; 23 specs 9.07.1972, S.N., 3 specs 12.07.1982, S.N., 2 specs 20.07.1993, A.M.; 8 specs France, Département Var, Sainte Beaume Mts, 07.1965, R.J.; 2 specs France, Les Adrets de Frejus, bord d'Argentière, 14.06.1974, B.P.; 4 specs France, (66), Banyuls-sur-Mer, 21.06.1989; 4 specs Niculițel, Cocoș monastery, 17.07.1973, C.A. (Fig. 2 D).

Stictoleptura erythroptera (Hagenbach, 1882)

Reșița, 2 specs 27.06.1953-19.06.1959, S.N.; Băile Herculane, 5 specs 19.07.1956-23.06.1962, S.N., 1 spec. 19.06.1979, S.N.; 1 spec. București, Băneasa forest, 16.06.1986, S.N.

Stictoleptura rubra (Linnaeus, 1758)

3 specs Azuga, without other data, M.A.L.; 6 specs Moinești, without other data; 1 spec. Novaci, without other data; 1 spec. Bucegi Mts, Bușteni, 9.07.1946; Retezat Mts, 1 spec. 11.06.1946; 5 specs 25-27.07.1956, S.N., 5 specs 28.07.1981, P.C.; 1 spec. Slănic Moldova, 1.07.1949; 1 spec. Voinești, 27.05.1950; 1 spec. Sfânta Ana Lake, 12.06.1951; Băile Herculane, 2 specs 10.06.1951, S.N., 2 specs 12.06.1952, S.N., 2 specs 19-23.07.1956, S.N., 1 spec. 19.06.1959, S.N.; 1 spec. 4.07.1964, S.N., 1 spec. 4.08.1967, S.N., 1 spec. 24.06.1970, R.A., 1 spec. 5.08.1971, S.N., 4 specs 1-5.08.1975, S.R., 9 specs 20-25.05.1977 S.N., 3 specs 14-17.07.1977, S.N., 2 specs 1-3.08.1978, S.N.; 2 specs Cheița Valley, 22.08.1953; 2 specs Vatra Dornei, 5.07.1957, N.I.; 1 spec. Bicz Gorges, 18.07.1957, P.G.A.; Predeal, 1 spec. 07.1957, 1 spec. 20.08.1962; 1 spec. Babadag, 20.06.1958, S.N.; Făgăraș Mts, Buda Peak, 13 specs 12-21.08.1959, S.N.; Făgăraș Mts, Otic Peak, 6 specs 15-16.08.1959, S.N.; Făgăraș Mts, Capra Peak, 2 specs 28.07.1957, S.N., 11 specs 17-20.08.1959, S.N.; Făgăraș Mts, Suru chalet, 3 specs 7.08.1957, S.N.; 1 spec. Letea forest, Danube Delta, 4.06.1958, S.I.; 1 spec. Periprava, Danube Delta, 11.07.1962, W.M.; Baiului Mts, Piatra Mare, 1 spec. 24.08.1962, S.N., 1 spec.

25.07.1971; 1 spec. Săcele, Braşov, 4.IX.1962, S.P.X.; Roşu Lake, 4 specs 1.08.1964, S.P.X., 1 spec. 23.07.1966, P.G.A.; 2 specs Cheia, 26-27.07.1967, S.P.X.; 1 spec. Retezat Mts, Gura Zlata, 12.07.1969, S.N.; 3 specs Tuşnad, 7-19.07.1970, S.P.X.; 1 spec. Gâdinti, 12.08.1971, S.N.; 1 spec. Făgăraş Mts, Negru Peak, 27.07.1974, S.N.; 37 specs Bicaz, Lapoş Valley, 1-8.08.1975, S.N.; Slătioara forest, Râşca, 1 spec. 25.08.1976, B.M., 1 spec. 12.08.1985, B.M.; 74 specs Oraviţa, 1-5.08.1977, S.N.; 1 spec. Râşnov Gorges, 27.07.1978, W.M.; 1 spec. Brădet, 10.08.1978, W.M.; 2 specs Retezat Mts, Rotunda, 5.08.1981, B.V.; Retezat Mts, Gura Zlata, 1 spec. 28.07.1981, P.C., 1 spec. 14.07.1984, P.C.; 2 specs Maramureş Mts, Valley of Vaser river, 20.08.1982, S.I.; 3 specs Piatra Craiului Mts, Plaiu Foi chalet, 4-7.08.1983 P.C.; 1 spec. Bucegi Mts, Pârâul Rece, 21.07.1984, S.R.; 1 spec. Piatra Mare Mts, Bunloc, 24.07.1984, S.R.; 2 specs Bichigiu, Coşbuc, 27.05.1985, R.D.; 13 specs Făgăraş Mts, Poiana Neamţului, 18.07.1985, D.I., S.R.; 23 specs Vlădeasa Mts, Valea Drăganului, 7.08.1989, S.R., R.D.; 1 spec. Piatra Craiului Mts, valey of Bârsa Tămaşului river, 12.07.1990, N.I.; 1 spec. Piatra Craiului Mts, valley of Şpirla river, 12.07.1990, S.R.; 2 specs valley of Bulba river, Baia de Aramă, 17.06.1992, S.R.; 2 specs Băile Chirui, Lueta, 2.08.1993, H.C.; 30 specs Făgăraş Mts, Cârţişoara, Vama Cucului, 29.07.1994, S.A., P.C., H.C.; 1 spec. Rodna Mts, Pietrosu Rodnei l. h., 12.09.1996, P.C.; 1 spec. Săcel, Izvorul Albastru al Izei, 9.07.1995, H.C.; 2 specs Moisei ("Izvorul lui Dragoş" f. h., 750 m), 13.09.1995, P.C., H.C.; 1 spec. Colibi meadow, 9.07.1996, H.C.; 11 specs Săpânţa, Colibi f. h., 9-13.07.1996, P.C., H.C., M.I.; 4 specs Vişeu Valley, 2 km downstream Baia Borşa, 20.08.1997, P.C., R.E.; 1 spec. Bălăsâna valley, 4 km upstream Baia Borşa, 21.08.1997, P.C.; 1 spec. Smereceni clearing, 7 km upstream Repedea, 22.08.1997, P.C.; 1 spec. Bistra valley, 4 km upstream Bistra, 26.08.1997, P.C.; 1 spec. valley of Frumuşeaua river, Crasna Vişeuului, 29.08.1997, P.C.; 1 spec. Ocna Şugatag, Pleşca chalet, 17.07.1998, P.C.; 1 spec. Piatra Craiului Mts, Sătic, Scorobia Valley, Padina Vălimăreanu, 5.07.2000, M.S.; 29 specs 17 km far from Reşiţa, towards Văliug, 10.08.2001, S.R., S.A., P.C.; 1 spec. Piatra Craiului Mts, Sătic, Valea Lungă, 29.06.2002, P.C.; 1 spec. Piatra Craiului Mts, Podu Dâmboviţei, 10 km upstream Cheia Rudăriţa Valley, 22.08.2003, R.E.; 1 spec. Piatra Craiului Mts, Peştera, 26.08.2003, P.C.; 3 specs valley of Pop Ivan river, 18.07.2004, S.R.; 1 spec. the confluence of the Pop Ivan and Hututeanca rivers, 12 km upstream Crasna Vişeuului, Maramureş Mts, 18.07.2004, P.C.; 4 specs Coşnea f. h., Poienile de sub Munte, 19.07.2004, C.G.; 2 specs valley of Coşnea river, Poienile de sub Munte, 20.07.2004, S.R.; 2 specs Maramureş Mts, valley of Vaser river, Făina, 21.07.2004, S.R.; 4 specs Maramureş Mts, valley of Vaser river, Bardău, 22.07.2004, P.C.; 4 specs Maramureş Mts, valley of Vaser river, Cozia, 22.07.2004, P.C.; 7 specs valley of Socolău river, 2 km upstream the confluence of the Socolău and Rica rivers, 19-23.07.2004, S.R.; 5 specs valley of Rica river, 2 km upstream Coşnea f. h., Poienile de sub Munte, 25.07.2004, S.R.; 1 spec. Făgăraş Mts, Vidraru Lake, Stan Valley, 7.08.2004, S.R.; 6 specs Făgăraş Mts, Vidraru Lake, Moliviş, 7.08.2004, S.R., S.Me.; 1 spec. Piatra Craiului Mts, Dâmbovicioara Gorges, 9.08.2004, P.I.

Stictoleptura scutellata (Fabricius, 1781)

1 spec. Piteşti, without other data; 1 spec. Rodna Mts, without other data, D.Fr.; Comana, 6 specs without other data, M.A.L., 2 specs 23.06.-9.07.1955, S.N.; 1 spec. Slănic Moldova, 26.07.1949; 1 spec. Oraviţa, Marila, 1.07.1953, S.N.; Sinaia, 1 spec. 23.08.1953, S.N., 1 spec. 9.07.1958, R.A., 1 spec. 14.07.1965 S.N.; 1

spec. Carpați Mts, 29.07.1954; 5 specs Cheia, 1.08.1954; 3 specs Babadag forest, 23.06.1955, S.N.; Băile Herculane, 10 specs 19-23.07.1956, S.N., 30 specs 2-13.07.1960, S.N., 1 spec. 5.06.1962 S.N., 2 specs 23.06.1963, S.N., 16 specs 4-9.07.1964, S.N., C.Io., 1 spec. 11.07.1965, S.N., 5 specs 1-2.08.1975, S.N., 10 specs 20.05.-5.07.1977, S.N., 101 specs 20.07.-6.08.1978 S.N., 1 spec. 12.07.1984, P.C.; 3 specs Retezat Mts, Gura Zlata, 16-27.07.1956, S.N.; Făgăraș Mts, Buda Peak, 10 specs 12-21.08.1959, S.N.; Făgăraș Mts, Otic Peak, 1 spec. 16.08.1959, S.N.; Făgăraș Mts, Capra Peak, 8 specs 20.08.1957, S.N., 1 spec. 27.07.1974, S.N.; 1 spec. Greșu, 21.07.1962, R.A.; 7 specs Moldova Nouă, 9.06.1964, S.N.; 1 spec. Pojoga, 11.07.1965, S.N.; 2 specs Roșu Lake, 23.07.1966, P.G.A.; 1 spec. Vrancea Mts, Lepșa, 29.06.1971, S.P.X.; 2 specs Vrancea Mts, valley of Tișița Aurie river, 4.08.1978, C.Io.; 9 specs Făgăraș Mts, Poiana Neamțului, 18-21.07.1985, D.I., S.R.; 1 spec. Băile Herculane, Domogled Mt., 1.07.1993, B.V.; 1 spec. Făgăraș Mts, Cârțișoara, Vama Cucului, 1.08.1994, P.C.; 1 spec. Lotru Mts, Voineasa, 1.08.1996, P.S.M.; 1 spec. Ocna Șugatag, Pleșca chalet, 17.07.1998, P.C.; 12 specs Colnic f. h., 2 km upstream Mara, Desești, 17-18.07.1998, M.I., P.S.M., V.A.; 1 spec. 1 km upstream Mara, Desești, 22.07.1998, P.C.; 1 spec. Piatra Craiului Mts, Oncioaia, valley of Dâmbovița river, 3.07.2002, P.C.; 1 spec. Bratcu Valley, 6.07.2004, B.C.; 3 specs Tarnița, 9.07.2004, P.A.; 1 spec. Coșnea f. h., Poienile de sub Munte, 25.07.2004, P.C.; 1 spec. Făgăraș Mts, Vidraru Lake, Moliviș, 7.08.2004, S.Me.

Strangalia Serville, 1835

(syn. *Strangalina* Aurivillius, 1912, *Typocerus* auct.)

Strangalia attenuata (Linnaeus, 1758)

1 spec. Grăușor, without other data, C.R.; 5 specs Sinaia, without other data, C.R.; Comana, 4 specs without other data, M.A.L., 1 spec. Vâlcea County, without other data, F.Ed.; 1 spec. Slatina, 22.06., F.Ed.; 2 specs without data K.D.; București, Băneasa forest, 2 specs without other data, C.R., 1 spec. 23.05.1954, 7 specs 27-29.05.1979, S.N., 4 specs 1.07.1980 B.V., 1 spec. 17.07.1981, B.V.; 1 spec. Chiciureni Măneciu, 28.07.1954; 1 spec. Sighișoara, 13.07.1956; Danube Delta, 1 spec. 5.07.1956, S.N., 26 specs 27.06.-19.07.1959, S.N., S.P.X., 1 spec. 25.06.1962, P.G.A., 1 spec. 11.06.1971, S.N.; 1 spec. Retezat Mts, 11.06.1946; Băile Herculane, 3 specs 12-14.07.1954, S.N., 6 specs 23.07.1956, S.N., 1 spec. 4.07.1964, S.N., 1 spec. 24.06.1970, R.A., 1 spec. 5.08.1971, S.N.; 1 spec. Miercurea Ciuc, 24.08.1955, P.G.A.; Budești, 5 specs 24.06.1956, S.N., 1 spec. 5.07.1957; 1 spec. Retezat Mts, Gura Apei, 26.07.1956, S.N.; Băneasa, Canaraua Fetii, 2 specs 24.07.1955-29.06.1956, S.N., 5 specs 17-20.07.1964, S.N.; Danube Delta, Periprava, 2 specs 5.07.1956, S.N., 1 spec. 12.07.1962, P.G.A., 1 spec. 15.07.1964, S.P.X.; 2 specs Southern Dobrogea, 4.06.1958, S.N.; Brănești, Pasărea forest, 11 specs 19.06.-30.07.1959, S.N., 1 spec. 29.06.1962, P.G.A., 1 spec. 4.07.1962, S.N., 1 spec. 16.06.1966, R.A., 1 spec. 4.07.1971, 2 specs 29.06.1977, S.N., 1 spec. 13.06.1978, S.R.; 3 specs Alexandria, Nanov forest, 31.05.1958, R.A.; 1 spec. București, Andronache forest, 15.07.1958, S.P.X.; 2 specs Căldărușani, 15-16.07.1959, R.A.; 1 spec. Făgăraș Mts, Suru chalet, 12.08.1959, S.N.; Periprava, Danube Delta, 2 specs 12.07.1962, D.I., 2 specs 14.07.-15.08.1964, N.S., S.P.X.; 9 specs Vidra, 18-23.07.1962, S.P.X.; 1 spec. Babadag forest, 20.06.1963, S.P.X.; 1 spec. Ineu, 21.06.1964, S.N.; 1 spec. Greci, 30.06.1964, S.I.; 2 specs 20.07.1993; 4 specs Măneciu Ungureni, 30.07.1967, R.A.; 2 specs Danube Delta, Caraorman, 18-

20.07.1969, S.P.X.; 2 specs Niculițel, Cocoș monastery, 7.07.1975, P.G.A.; Snagov, 1 spec. 22.07.1976, M.I., 1 spec. 18.07.1979, S.P.X., 1 spec. 13.08.1980, S.P.X.; Zăvestreni forest, 5 specs 22-23.06.1977, S.R., 1 spec. 21.06.1978, S.R.; 8 specs Nicolae Titulescu, Palanca forest, 23-25.06.1980, S.R., M.I., P.C.; 1 spec. Crevedia Mare, 10.07.1980, M.I.; 1 spec. C. A. Rosetti, Danube Delta, 18.07.1980, S.P.X.; 2 specs Sfântu Gheorghe, Danube Delta, 24.06.1982, S.P.X.; 1 spec. Fundata, 22.06.1984, G.V.; 1 spec. Avrig, 16.07.1985, S.R.; 1 spec. Cărășeu, 30.07.1985, G.V.; 1 spec. Făgăraș Mts, Cârțișoara, Vama Cucului, 1.08.1994, P.C., A.M.; 1 spec. Săpânța, Nireș f. h., 10.07.1996, S.A., 2 specs Săpânța, Colibi f. h., 11-13.07.1996, P.C.; 2 specs Leordina, 22.08.1997, R.E.; 2 specs Bistra valley, 4 km upstream Bistra, 26.08.1997, P.C.; 1 spec. valley of Frumușeaua river, Crasna Vișeuului, 29.08.1997, P.C.; 2 specs Mara valley, 2 km upstream Mara, Desești, 17.VII.1998, M.I.; 2 specs Coșeu river, Cornești, Călinești, 19.VII.1998, P.An., V.A.; 1 spec. 1 km upstream Mara, Mara, Desești, 22.VII.1998, P.C.; 1 spec. Țibleș Mts, valley of Idișor rivulet, Săliște, 22.06.2003, S.Me.; 1 spec. Făgăraș Mts, Vidraru Lake, Moliviș, 7.07.2004, S.M.

Strangalomorpha Solsky, 1873

Strangalomorpha tenuis (Solsky, 1873)

2 specs Japan, Simajima, 20.07.1970, O.S.

Vadonia Mulsant, 1863

Vadonia hirsuta (K. Daniel & J. Daniel, 1891)

10 specs Murfatlar, 27.06.1958, S.N. (Figs 3 A; 4, aedeagus).

Vadonia steveni (Sperk, 1835)

(syn. *adusta* Kraatz, 1859)

2 specs Mangalia, 9.06.1903, F.Ed.; Valu lui Traian, 1 spec. 4.06.1954, S.P.X., 1 spec. 6.07.1959, S.P.X., 1 spec. 22.06.1962, R.A.; Danube Delta, Letea forest, 6 specs 21-25.06.1955, S.N., 5 specs 21.06.1970, S.N., 5 specs 5.07.1977, S.N., 1 spec. 18.05.1993, M.I.; 18 specs Murfatlar, 25-29.06.1958, S.N.; Hagieni forest, 1 spec. 27.06.1961, S.N., 1 spec. 4.06.1962, S.N., 14 specs 29.05.-6.06.1963, S.N. P.G.A., 4 specs 8.06.1964, S.N., 2 specs 6.06.-2.07.1965, N.S., 8 specs 1.06.1988, S.N.; Danube Delta, Periprava, 5 specs 23.06.1962, S.N., 11 specs 29.06.-4.07.1963, S.P.X., 16 specs 14-15.07.1964, N.S., S.P.X., 5 specs 1-3.07.1965, N.S., 6 specs 16-25.06.1966, N.S., 6 specs 19.07.1987, S.N.; Danube Delta, C. A. Rosetti, 11 specs 24.06.1962, S.N., 1 spec. 5.07.1963, P.G.A., 1 spec. 18.07.1980, S.P.X., 3 specs 3-6.06.1981, S.P.X.; 1 spec. Băile Herculane?, 10.05.1964, P.G.A.; 2 specs Agigea, 15.06.1964, S.P.X.; 1 spec. Băneasa, Canaraua Fetii, 16.07.1964, N.S.; 2 specs Mangalia, Comarova forest, 5.06.1965, S.P.X.; 5 specs 6 Martie, Cap Ianola, 11.06.1993, M.I. (Figs 3 C; 5, aedeagus).

Vadonia unipunctata (Fabricius, 1787)

1 spec. Măcin, without other data, M.A.L.; 2 specs Târgușor (Ester), without other data, M.A.L.; 4 specs without data, F.Ed.; Comana, 1 spec. without other data, M.A.L., 2 specs 17.07.1965, S.N., 2 specs 5.06.1972, S.N.; Valu lui Traian, 2 specs

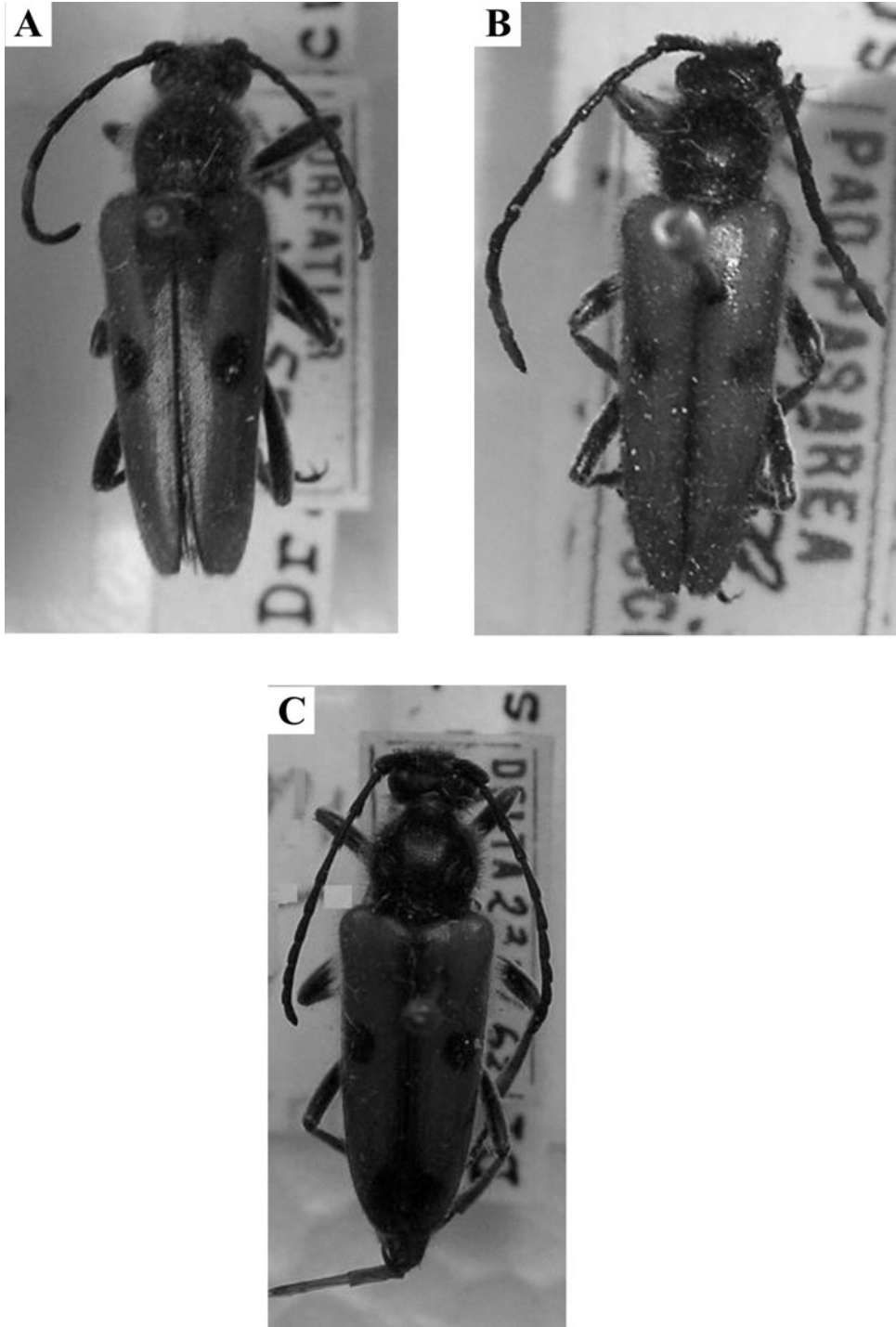


Fig. 3 – A, *Vadonia hirsuta*; B, *Vadonia unipunctata*; C, *Vadonia steveni*.

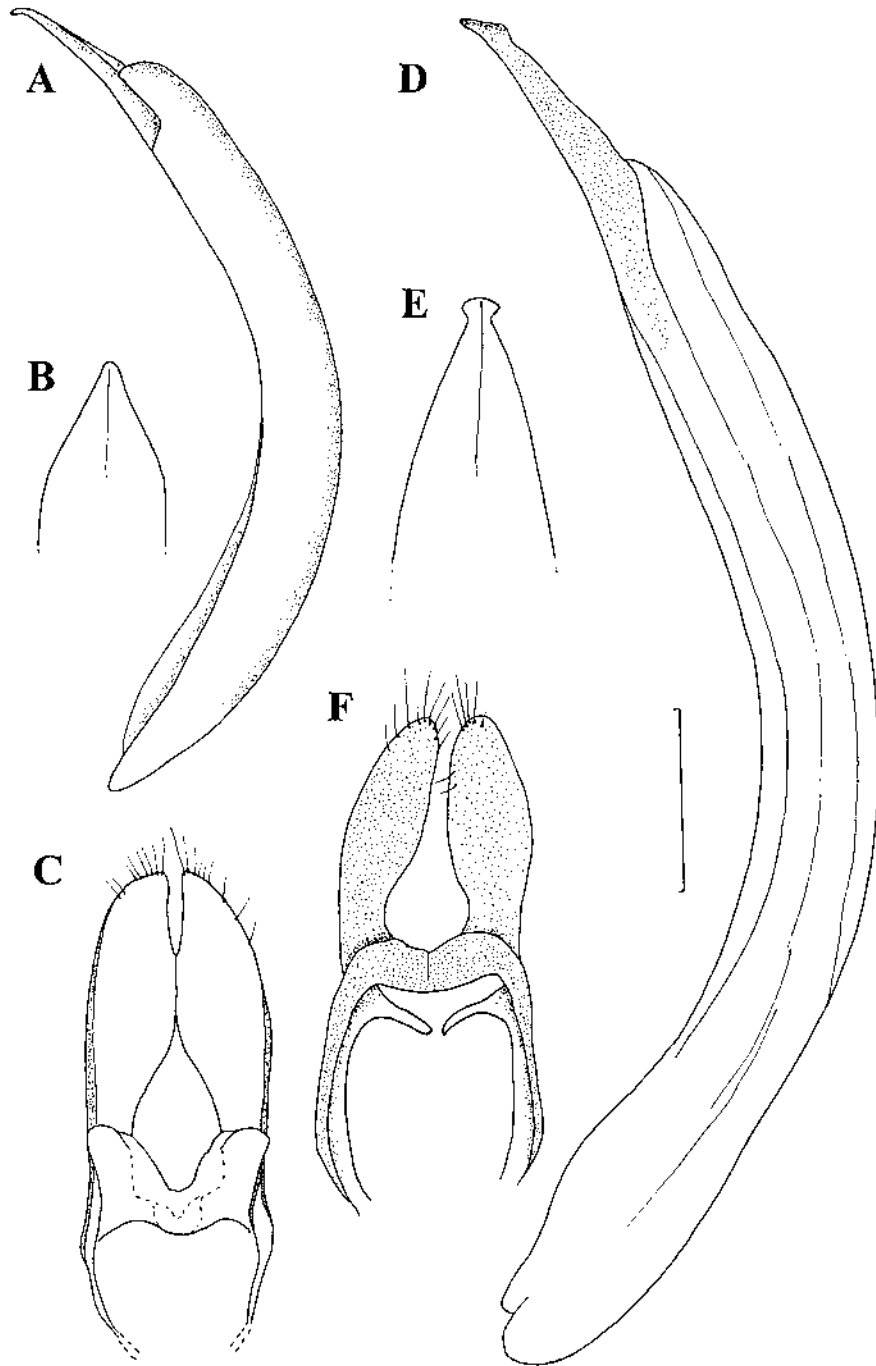


Fig. 4 – *Vadonia unipunctata*, aedeagus: A, penis lateral view; B, apex of penis; C, parameres ventral view; *Vadonia hirsuta*, aedeagus: D, penis lateral view; E, apex of penis; F, parameres ventral view. Scale: 0.5 mm.

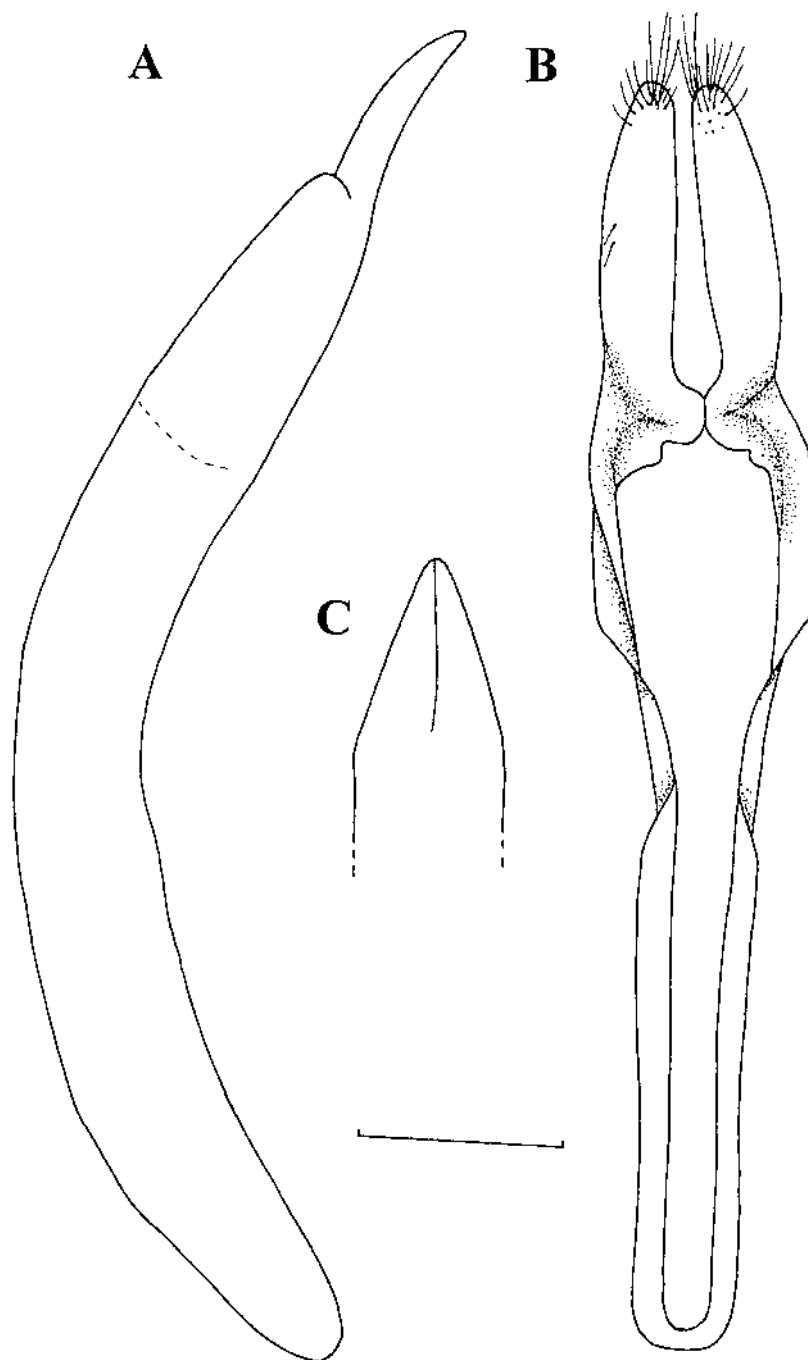


Fig. 5 – *Vadonia steveni*, aedeagus: A, penis lateral view; B, parameres ventral view; C, apex of penis. Scala: 0.5 mm.

4.06.1954, S.P.X., 4 specs 18-19.06.1955, S.P.X., 2 specs 19.06.1958, S.P.X., 6 specs 22.06.1962, R.A.; 14 specs Valea lui David, 10.06.1958, S.N.; Brănești, Pasărea forest, 52 specs 19.06.1958, S.N., 21 specs 6-22.06.1959, S.N., 5 specs Murfatlar, 28-29.06.1958, S.N.; Hagieni forest, 4 specs 5-19.06.1962, P.G.A., R.A., 5 specs 6-8.06.1963, P.G.A., 5 specs 4-8.06.1964, S.N.; 3 specs 6.07.1965, W.M., 2 specs 6.06.1965, W.M.; 1 spec. Danube Delta, Caraorman forest, 6.05.1965, N.S.; 7 specs France, Département Var, Sainte Beaume Mts, 07.1965, R.J.; 2 specs Mâneciu Ungureni, 22.09.1967, S.P.X.; 1 spec. Budapesta 1.06.1969, S.P.X.; 2 specs France, Les Adrets de Frejus, bord d'Argentiere, 14.06.1974, B.P.; 10 specs Băile Herculane, 12.06.1982, S.N.; 1 spec. Strehăia, 24.06.1983, M.I.; 5 specs Colnic f. h., 2 km upstream Mara, Desești, 17-18.07.1998, P.An., V.A. (Figs 3 B; 6, aedeagus).

DISCUSSIONS

The specimens of the acquired collections at the end of the 19th century and the beginning of the 20th are preserved for their historical value, although not all of them have collecting data. The specimens of Deszö Kenderessy collection, of an amateur entomologist from Transylvania, were collected at the end of the 19th century from Hațeg Depression. The materials of the amateur entomologist Eduard Fleck's collection, acquired in 1914, were collected especially from the Bucegi Mountains, most of them from Azuga. A large number of the specimens of the Fridrich Deubel collection (amateur entomologist from Brașov), acquired in 1923, originates in the surroundings of Brașov. Arnold Lucien Montandon collection consists of coleopterans collected at the end of the 19th century and the beginning of the 20th one, from the royal estate from Broșteni, from Comana (Giurgiu County) or from Dobrogea. From the old collections, specimens collected by Richard Canisius, painter and entomologist, who worked in the Museum during 1907-1934, are also included. On the labels of the material from these collections only the localities are mentioned, without specifying the day, month and year of collecting.

From the 47 species of the subfamily Lepturinae, tribe Lepturini, reported for Romania, 42 species are present in collections. The following species *Anastrangalia reyi* (Dascălu, 2000-2003 reported this species from Romania), *Cortodera holosericea* (Fabricius), *Lepturalia nigripes* (Degeer), *Stictoleptura rufa* are absent in collections. *Grammoptera abdominalis* (Stephens), also reported from Romania, is represented by the material collected from France.

Common species are well represented.

Further on, I shall point out some of the rare species of the collection.

In Romania, there is a single report for *Cornumutilla quadrivittata* (Gebler) from Făgăraș Mountains, Bârcăciu Chalet (Panin & Săvulescu, 1961). This rare species occurs in the coniferous forests of the Alps, Tatra Mountains, the Carpathians, North-East ex-USSR, Siberia. In the collection of „Grigore Antipa” National Museum of Natural History, there are five specimens, collected from Făgăraș Mountains, Negoiu Peak, in August 1957 (unpublished data). Since then, the species was not found anymore.

Cortodera femorata (Fabricius) is distributed in Europe. From Romania, it was reported from Brașov (Petri, 1912), Valea Vinului (Csiki, 1951) and from Gura Humorului (Andriescu, 1972). In the collection of „Grigore Antipa” Museum there

are three specimens in Eduard Fleck collection, but also in Dr. Nicolae Săvulescu's collection, material collected from Dobrogea, in Hagieni (1963-1965) and Babadag (1975) forests.

Nivellia sanguinosa (Gyllenhal), rare Palaearctic species, boreo-montaineous, is less reported from Romania: Maramureş Mountains, Făina River Valley (Frivaldszki, 1871, Kuthy, 1900); Sinaia (Fleck, 1905); royal estate from Broşteni (Montandon, 1906); Retezat Mountains - Râu de Mori, Rodna Mountains (Petri, 1912). In 1994, it was found in Nemira Mountains (Szél et al., 1995), and in 1997, in Maramureş Mountains, in Cârliğătura valley – specimen preserved in the collection of „Grigore Antipa” Museum (Serafim, 1998).

Pedostrangalia revestita (Linnaeus), very rare species, is distributed in Europe and in Transcaucasia. In Romania, it was reported from Dumbrava, Haţeg, Baia Mare, Braşov, Băile Slănic, Cindrel Mountains (Cibin) (Panin & Săvulescu, op.cit.) and Măzăneşti (Andriescu, 1972). In the collections of “Grigore Antipa” Museum, there are two specimens, one collected from Craiova, in 1950 (Serafim, 1985), and the other one from Maramureş, from Bodi Ferneziu, in 1953 (unpublished data, since now).

Pedostrangalia verticalis (Germar), *Vadonia hirsuta* and *Vadonia steveni* (Sperk) are rare species, reported only from Dobrogea, for the time being.

Pedostrangalia verticalis – a species less reported from Romania, from Cornereva (Frivaldszky, 1865) and from Dobrogea: Măcin, Turcoaia (Igliţa), Babadag (Panin & Săvulescu, op. cit.). In the collection, there is a material from Romania, from Babadag, collected between 1955-1970, but also from Bulgaria and Croatia. The species is distributed in Italy, Balkan Peninsula, Turkey.

Vadonia hirsuta was often considered a variation of *Vadonia unipunctata*. It is regarded as a species by Panin & Săvulescu (op. cit.). In Romania the species was reported only from Dobrogea. In collections there are specimens collected from Murfatlar (Dobrogea). *Vadonia hirsuta*, a Balkanic species, is also recorded in Serbia (Pil, 2004 – 2005).

Vadonia steveni is also reported from Dobrogea: from the littoral (Mangalia, Agigea, Eforie Sud), Hagieni, Târguşor (Ester), Măcin, Turcoaia (Igliţa), but also from the Danube Delta (Tulcea, C. A. Rosetti, Periprava, Sulina) (Panin & Săvulescu, op. cit.). In collection numerous specimens are preserved, especially those collected from the Danube Delta. The species is distributed in South France, Hungary, North Balkan Peninsula, Slovakia, Republic of Moldavia, Ukraine.

Stictoleptura cordigera (Fuessly) is reported from Dobrogea (Măcin, Oltina, Băneasa – Canaraua Feti), from Ileana and Paşărea forest (Ilfov County) and from Comana forest (Giurgiu County) (Panin & Săvulescu, op. cit.). In collections there are numerous specimens collected from these Romanian regions. It is distributed in South and Central Europe, the Balkan Peninsula, Turkey, the Caucasus, Transcaucasia, Iran, the Near East.

Paracorymbia fulva was reported only from the Bucegi Mountains (Fleck, 1905), Băile Herculane (Panin & Săvulescu, op. cit.), Vatra Dornei and Rusca (Andriescu, 1972) and from Corcoaia Gorges (Ruicănescu, 1997). In the collections of „Grigore Antipa” Museum there is material collected from Băile Herculane and from South Dobrogea (unpublished data).

Pedostrangalia pubescens, also a rare species in Romania, is reported from Cislădie, Cibin Mountains (Petri, op. cit.) and from Băile Herculane (Panin & Săvulescu, op. cit.) and from Domogled Mountain and from Țesnei Gorges (Ruicănescu, 1997). In collection, there is material only from Răchitele (Cocu, Argeș Dep.) and from Băile Herculane, collected between 1956-1977.

Paracorymbia pallens and *Macroleptura thoracica* are reported from Romania only from Banat.

Balkan species, *Paracorymbia pallens* (Brullé), was reported only from Banat (Winkler, 1924 - 1926 – without other specifications), from Băile Herculane (Kuthy, 1900; Panin & Săvulescu, 1961; Ruicănescu, 1997) and from Țesnei Gorges from Mehedinți Mountains (Ruicănescu, 1997). In the collections of „Grigore Antipa” Museum, there are preserved the specimens collected from Băile Herculane, within the period 1942 – 1971.

Macroleptura thoracica (Creutzer), a species with wider distribution (North and Central Europe, the Balkan Peninsula, the Caucasus, Siberia, China, Mongolia, Sakhalin, Japan) is known from Romania only from Mehadia (Frivaldszky, 1865) and from Băile Herculane (Kuthy, 1900; Csiki, 1903; Panin & Săvulescu, 1961). Collected specimens from Băile Herculane, between 1954 and 1959, are preserved in „Grigore Antipa” National Museum of Natural History.

Iberic species *Paracorymbia stragulata*, distributed only in Portugal, Spain and South-West France, is represented in the collection only by a material originating in Spain.

In the Museum collections there are the following East-Palaeartic species: *Anoplodera dichroa*, *Leptura dimorpha*, *L. latipennis*, *L. ochraceofasciata*, *Nakanea vicaria*, *Pachytodes cometes*, *Strangalomorpha tenuis*, collected in Japan and included in collection by a material exchange with the Japanese specialists.

ACKNOWLEDGEMENTS

Thanks to Mr. Alexandru Iftime for photographies, also to Mrs. Petruța Dumitrică for tracing the drawings in China ink; and to the anonymous reviewers for reading the manuscript.

CATALOGUL SPECIILOR PALEARCTICE DE LEPTURINAE (COLEOPTERA: CERAMBYCIDAE) DIN PATRIMONIUL MUZEULUI NAȚIONAL DE ISTORIE NATURALĂ „GRIGORE ANTIPA” (BUCUREȘTI) (Partea a II-a)

REZUMAT

Catalogul cuprinde datele referitoare la 53 de specii paleartice de coleoptere cerambycide din subfamilia Lepturinae, tribul Lepturini, păstrate în colecțiile Muzeului Național de Istorie Naturală „Grigore Antipa”. Dintre cele 47 specii cunoscute ca făcând parte din fauna României sunt prezente în colecțiile Muzeului 42 de specii. Dintre acestea se remarcă speciile *Cornumutilla quadrifasciata*, *Cortodera femorata*, *Macroleptura thoracica*, *Nivellia sanguinosa*, *Pedostrangalia pubescens*, *P. revestita*, *P. verticalis*, *Stictoleptura cordigera*, *Vadonia hirsuta*, *V. steveni*, *Paracorymbia pallens* (specie balcanică). Specia iberică *Paracorymbia stragulata* este reprezentată în colecție prin material provenind din Spania.

Din colecțiile Muzeului fac parte următoarele specii est-paleartice provenind din Japonia: *Anoplodera dichroa*, *Leptura dimorpha*, *L. latipennis*, *L. ochraceofasciata*, *Nakanea vicaria*, *Pachytodes cometes*, *Strangalomorpha tenuis*.

LITERATURE CITED

- ANDRIESCU, I., 1972 – Contribuții asupra cunoașterii Cerambycidelor din nordul Moldovei. Muzeul de Științele Naturii Dorohoi. Studii și comunicări: 191–196. (in Romanian)
- CSIKI, E., 1903 – Magyarország Cerambycidái. Rovartani Lapok, 10 (7): 161–166. (in Hungarian)
- CSIKI, E., 1951 – Fauna jukov Gorí Radna (Die Käferfauna des Rodnaer Gebirges). Acta Biologica Academiae Hungaricae, 2: 119–168.
- DANILEVSKY, M., 2004 – Systematic list of Longicorn Beetles (Coleoptera: Cerambycoidea) of Europe. Internet: www.uoehb.cas.cz/~natur/cerambyx/list_europe-htm
- DASCĂLU, M. M., 2000-2003 – *Anastrangalia reyi* (Heiden, 1889) (Coleoptera, Cerambycidae) specie nouă pentru fauna României. Complexul Muzeal de Științele Naturii “Ion Borcea” Bacău, Studii și comunicări, 2000 – 2003: 159–160. (in Romanian)
- FLECK, ED., 1905 – Die Coleopteren Rumäniens. Buletinul Societății de Științe București, 14 (5): 119–145.
- FRIVALDSZKY, J., 1865 – Allatani Kirandulasaim Orșova, Mehadia es Korniareva vedekein. A Magyar Tudományós Akadémia Evkönyve, 11 (4): 197–243. Pestén. (in Hungarian)
- FRIVALDSZKY, J., 1871 – Adatok Máramaros vármegye faunájához. Matematikai és Természettudományi Közlemények, 9: 183–232. (in Hungarian)
- KUTHY, D., 1900 – Ord. Coleoptera. In: A Magyar Birodalom Allatvilága (Fauna Regni Hungariae). A K. M. Természettudományi Társulat, Budapest.
- MONTANDON, A. L., 1884 – Souvenirs de Moldavie. Le domaine royal de Broșteni. Bulletin de la Société d'Études Scientifiques d'Angers, 14: 365–390.
- MONTANDON, A. L., 1906 – Notes sur la faune entomologique de la Roumanie. Buletinul Societății de Științe București, 15 (1–2): 30–80.
- NEGRU, ȘT., A. ROȘCA, 1967 – Ord. Coleoptera. In: L'entomofaune des forêts du sud de la Dobroudja. Travaux du Muséum d'Histoire Naturelle “Grigore Antipa”, 27: 119–145.
- PANIN, S., N. SĂVULESCU, 1961 – Coleoptera: Cerambycidae. In: Fauna României. Edit. Academiei Române, 10 (5): 1–523. (in Romanian)
- PETRI, K., 1912 – Siebenbürgens Käferfauna auf Grund ihrer Erforschung bis zum Jahre 1911: 1–376. Hermannstadt.
- PIL, N., 200–2005 – Checklist of longhorn beetles (Coleoptera: Cerambycidae) from Mt. Frușca Gora. Acta entomologica serbica, 9–10 (1–2): 105–110.
- RUICĂNESCU, A., 1997 – Coleoptere colectate din parcurile naționale Retezat și Valea Cernei. Pp. 57–73. In: Entomofauna parcurilor naționale Retezat și Valea Cernei. Societatea Lepidopterologică Română Cluj – Napoca. (in Romanian)
- SAMA, G., 2004 – Coleoptera: Cerambycidae. Internet: www.faunaeur.org.
- SERAFIM, R., 1985 – Contributions à la connaissance des Coléoptères Cerambycidae du sud de la Roumanie. Travaux du Muséum d'Histoire Naturelle „Grigore Antipa”, 27: 69–94.
- SERAFIM, R., 1993 – Contributions à la connaissance des coléoptères Cérambycidés (Coleoptera, Cerambycidae) du Delta du Danube et du Complex lagunaire Razelm (Roumanie). Travaux du Muséum d'Histoire Naturelle „Grigore Antipa”, 33: 235–246.
- SERAFIM, R., 1997 a – Contributions to the knowledge of the Coccinellidae and Cerambycidae (Coleoptera) in Maramureș Depression and Rodnei Mountains (Romania). Travaux du Muséum National d'Histoire Naturelle „Grigore Antipa”, 37: 69–87.
- SERAFIM, R., 1997 b – Contributions to the knowledge of the distribution of Coccinellidae and Cerambycidae (Coleoptera) in the Igriș Plateau, Săpânța River Basin, Maramureș (Romania). Travaux du Muséum National d'Histoire Naturelle „Grigore Antipa”, 39: 307–314.
- SERAFIM, R., 1998 – Coccinellidae and Cerambycidae (Coleoptera) from Vișeu river basin, Maramureș, (Romania). Travaux du Muséum National d'Histoire Naturelle „Grigore Antipa”, 40: 509–524.
- SERAFIM, R., 1999 – Coccinellidae and Cerambycidae (Coleoptera) from the Gutâi Mountains, River Mara Basin, Maramureș (Romania). Travaux du Muséum National d'Histoire Naturelle „Grigore Antipa”, 41: 487–504.
- SERAFIM, R., 2004 – Cerambycidae (Coleoptera) from Maramureș and Țibleș Mountains, (Romania). Travaux du Muséum National d'Histoire Naturelle „Grigore Antipa”, 46: 121–137.
- SERAFIM, R., 2005 – Catalogue of the Palearctic species of Prioninae and Lepturinae (Coleoptera: Cerambycidae) from the patrimony of „Grigore Antipa” National Museum of Natural History (Bucharest). (Part I). Travaux du Muséum National d'Histoire Naturelle „Grigore Antipa”, 48: 103–117.

- SERAFIM, R., 2006 – Data on Cerambycids and Coccinellids (Coleoptera: Cerambycidae, Coccinellidae) of Piatra Craiului National Park. *In: Research in Piatra Craiului National Park*, 2: 193–198.
- SERAFIM, R., S. MAICAN, 2003 - Preliminary data on the Cerambycides and Coccinellides (Coleoptera: Cerambycidae, Coccinellidae) of Piatra Craiului National Park. *In: Research in Piatra Craiului National Park*, 1: 250–261.
- SERAFIM, R., S. MAICAN, 2004 – Contributions to the knowledge of the coleopterans from the littoral of the Black Sea (Romania). *Travaux du Muséum National d'Histoire Naturelle „Grigore Antipa”*, 47: 169–210.
- SZĚL, G., I. RÓZNER, I. KOCS, 1995 – Contribuții la cunoașterea coleopterelor din Transilvania (România) pe baza colectărilor din ultimii ani. *Acta Hargitensia II, Aluta*, 19: 73-92. (in Romanian)
- WINKLER, A., 1924-1932 – *Catalogus Coleopterorum regionis palaearcticae*. Wien, Albert Winkler, XVIII., Dittesgasse 11.

Received: March 6, 2006
Accepted: May 30, 2006

Muzeul Național de Istorie Naturală “Grigore Antipa”
Șos. Kiseleff 1, 011341 București 2, România
e-mail: serafim@antipa.ro