

<i>Travaux du Muséum National d'Histoire Naturelle</i> «Grigore Antipa»	Vol. LIII	pp. 235–272	© Décembre 2010
--	-----------	-------------	--------------------

DOI: 10.2478/v10191-010-0018-3

**THE CATALOGUE OF THE PALAEARCTIC SPECIES OF  
LAMIINAE (COLEOPTERA: CERAMBYCIDAE) FROM THE  
PATRIMONY OF “GRIGORE ANTIPA” NATIONAL MUSEUM OF  
NATURAL HISTORY (BUCHAREST)**  
**(Part V)**

*To Dr. Nicolae Săvulescu's memory*

RODICA SERAFIM

**Abstract.** The catalogue presents Palaearctic Cerambycidae coleopteran species of the subfamily Lamiinae preserved in the collections of “Grigore Antipa” National Museum of Natural History of Bucharest.

**Résumé.** Le catalogue présente les espèces de coléoptères paléartiques de Cerambycidae, sousfamille Lamiinae, gardés dans les collections du Muséum National d'Histoire Naturelle “Grigore Antipa” de Bucarest.

**Key words:** Coleoptera, Cerambycidae, Lamiinae, catalogue, collections, “Grigore Antipa” National Museum of Natural History, Bucureşti (Bucharest).

*INTRODUCTION*

The Cerambycidae collections preserved in “Grigore Antipa” National Museum of Natural History from Bucureşti (Bucharest), consists of:

- material from the old coleopteran collection from the Palaearctic area (which gather specimens from Richard Canisius, Deszö Kenderessy, Eduard Fleck, Fridrich Deubel, Arnold Lucien Montandon, Emil Varady collections, acquired between 1883 – 1923);

- lots of material from Dr. Nicolae Săvulescu's collection acquired between 1961 – 1982 and material from the same collection, which were included in the Museum patrimony in 1992, after Dr. Nicolae Săvulescu's death;

- specimens obtained by exchange with foreign specialists and collectors;

- donations: Daniel Kubisz, Mihai Şerban Procheş, Viorel Ungureanu, Petru Istrate;

- material collected in the field in Romania by the specialists of the “Grigore Antipa” Museum and by their collaborators, during 1946 – 2009.

- material collected from Morocco, Turkey, Bulgaria, Tunisia, Syria (Expeditions of „Grigore Antipa” Museum in the Mediterranean countries), during 2005 – 2008.

A large part of the information given by the specimens from the collections was revaluated in by scientific papers.

The first data on the material of the old collections, which now belong to the Museum patrimony, were published by Fleck (1905), Montandon (1906, 1908).

Panin and Săvulescu (1961) published the material, collected till 1960, in the fascicle of „Romanian fauna” („Fauna României”).

A part of the data were published by Negru & Roșca (1967), Serafim (1985, 1997 a, b, 1998, 2004), Serafim & Maican (2004, 2008), Ungureanu, Maican & Serafim (2008), Maican & Serafim (2009).

The collection catalogue was published in several steps:

In the first part of the catalogue of Cerambycidae species data concerning 25 species of the subfamilies Prioninae (tribes Prionini and Aegosomatini) and Lepturinae (tribes Oxymirini, Xylosteini, Rhamnusiini and Rhagiini) were published (Serafim, 2005).

In the second part, 53 Palaearctic species of the subfamily Lepturinae, tribe Lepturini, are presented (Serafim, 2006).

In the third part, ten Palaearctic species of the subfamily Spondylidinae (tribes Anisarthronini, Asemini, Saphanini, Spondydini) are presented (Serafim, 2007).

In the fourth part of Palaearctic Cerambycidae catalogue, two species of the subfamily Necydalinae and 91 species of subfamily Cerambycinae are listed (Serafim, 2009).

In the fifth part of catalogue, 112 species and subspecies of subfamily Lamiinae are listed. Most part of the material (79 taxa) originates in Romania.

The species identification was made by Sergiu Panin<sup>1</sup>, Nicolae Săvulescu<sup>2</sup>, Ștefan Negru<sup>3</sup>, Atena Roșca<sup>4</sup>, Rodica Serafim.

Nomenclature and systematical order are according to those used by Sama (2005) in „Fauna Europaea”, Danilevsky (2007) in „A check-list of Longicorn Beetles (Coleoptera, Cerambycoidea) of Europe”, Hoskovec & Rejzek (2009) in „Longhorn beetles (Cerambycidae) of the West Palaearctic region” and Lobl & Smetana (2010) in „Catalogue of Palaearctic Coleoptera”.

#### Abbreviations

f.h. – forest house; Mt./Mts - Mountain/s; spec. (s) – specimen/s; coll. - collection

#### Collectors' name:

A.M. – Achim Mihaela; A.I. – Andreescu Ioana; A.A.M. – Andrei Ada Maria; A.G. – Andrei Gabriela; A.Mi. – Andrei Mircea; B.F. – Bajet F.; B.J. – Balazuc J.; B.C. – Ban Cristina; B.M. – Băcescu Mihai; B.A. – Bănărescu Anca; B.P. – Berger P.; B.G. – Blănaru Gabriel; B.V. – Brădescu Vladimir; B.S. – Bruschi S.; C.R. – Canisius Richard; C.I. – Căpușe Iosif; C.G. – Chișamera Gabriel; D.Fr. – Deubel Fridrich; D.L. – Dioszeghy Laszlo; D.I. – Drăghia Ion; D.D. – Dumitrescu Dan; F.Ed. – Fleck Eduard; F.M. – Foaltin Mariana; G.L. – Ganglbauer Ludwig; G.P. – Garagnani P.; G.N. – Gâldean Nicolae; Gh.P. – Gherghel P.; G.V. – Gheorghiu Victor; G.C. – Gonzalez C.; H.C. – Hoinic Cristina; Ig. A. – Igna A.; I.Al. – Iftime Alexandru; I.A. – Ionescu Anneliese; I.I. – Iorgu Ionuț; I.P. – Istrate Petre; K.D. – Kenderessy Deszo; Ku.D. – Kubisz Daniel; L.I. – Lepși Iosif; L.D. – Lupu Dochița; M.S. – Maican Sanda; M.I. – Matache Ioana; M.B.P. – Matei Bogdan Petre; M.A.L. – Montandon Arnold Lucien; M.D. – Murariu Dumitru; N.M. – Năzăreanu Marinela; N.St. – Negru Ștefan; N.I. – Nemeș Ioan; O.S. – Ogura S.; P.S.X. – Palade Scobiola Xenia; P.C. – Părvu Corneliu; P.K.A. – Penecke Karl Alfons; P.A. – Petrescu Angela; P.I. – Petrescu Iorgu; P.E. – Pisciă Elena; P.G.A. – Popescu-Gorj Aurelian; P.S.M. – Procheș Șerban Mihai; R.I.V. – Raica Iuga Victoria; R.P. – Rapuzzi Pierpaolo; R.N. – Răduleț Năstase; R.V. – Redondo V.; R.J. – Renault J.; R.A. – Roșca Atena; S.G. – Sama Gianfranco; S.N. – Săvulescu Nicolae; S.D. – Săunașu Dragoș; S.E. – Schneider Eckbert; S.R. – Serafim Rodica; S.A. – Sermet A.; S.Ig. – Sienkiewicz Igor; S.Al. – Sofronie Alexandra;

<sup>1</sup> Sergiu Panin, author of the volume of Cerambycidae fauna (1961).

<sup>2</sup> Nicolae Săvulescu, author of the volume of Cerambycidae fauna (1961). He worked at the museum a short period, but was most faithful and most important collaborator of this institution.

<sup>3</sup> Ștefan Negru worked at the museum during 1963 to 1970.

<sup>4</sup> Atena Roșca, worked at the museum during 1954 to 1976.

S.Me. – Stan Melania; S.Au. – Stănescu Aurora; S.M. – Stănescu Mihaela; S.Mi. – Stănescu Mihai; S.I. – Stănoiu Ion; S.L. – Szekely Levente; T.Ma. – Tâlpeanu Matei; T.E. – Teleki E.; U.V. – Ungureanu Viorel; V.E. – Váradi Emil; W.M. – Weinberg Medeea, W.E. – Worrel Eugen.

Abbreviations of the county names in Romania:

AB – Alba; AG – Argeş; AR – Arad; BC – Bacău; BH – Bihor; BN – Bistriţa Năsăud; BT – Botoşani; BR – Brăila; BV – Braşov; BZ – Buzău; CS – Caraş Severin; CL – Călăraşi; CJ – Cluj; CT – Constanţa; CV – Covasna; DB – Dâmboviţa; DJ – Dolj; GL – Galaţi; GJ – Gorj; GR – Giurgiu; HD – Hunedoara; HR – Harghita; IF – Ilfov; IL – Ialomiţa; IS – Iaşi; MH – Mehedinţi; MM – Maramureş; MS – Mureş; NT – Neamţ; OT – Olt; PH – Prahova; SB – Sibiu; SM – Satu Mare; SV – Suceava; TL – Tulcea; TM – Timiş; TR – Teleorman; VS – Vaslui; VL – Vâlcea; VN – Vrancea.

#### MATERIAL AND RESULTS

##### Family Cerambycidae Subfamily Lamiinae Tribe Acanthocinini

##### *Acanthocinus* Dejean, 1821

##### *Acanthocinus aedilis* (Linnaeus, 1758)

1 spec., Băile Felix, Oradea (BH), 1911, V.E.; 7 specs, Păltiniş, Cindrel (Cibin) Mts (SB), 21.05.1952, S.N.; 9 specs, Răşinari (SB), 20.05.1953, S.N.; 1 spec., Răstolniţa (MS), 16.06.1956, S.N.; 1 spec., Bârnova (IS), 19.05.1956, S.N.; 5 specs, Deseşti, 2 km upstream Mara (MM), 17.07.1998, P.S.M.; 1 spec., Pleşca chalet, Ocna Şugatag (MM), 20.07.1998, P.A.; 1 spec., 1 km South of Izvoare health resort, Deseşti (MM), 23.07.1998, P.S.M.

##### *Acanthocinus griseus* (Fabricius, 1792)

1 spec., Covasna (CV), without other data, D.Fr.; 1 spec., Păltiniş, Cindrel (Cibin) Mts (SB), 20.05.1953, S.N.; 1 spec., Daneţi (DJ), 14.06.1953, S.N.; 1 spec., Lacul Sărat (BR), 8.07.1957, S.N.; 2 specs, Timişoara (TM), 8.06.1965; 1 spec., Băile Herculane (CS), 2.07.1967, S.N.

##### *Acanthocinus reticulatus* (Razoumowsky, 1789)

1 spec., Azuga (PH), without other data, F.Ed.; 14 specs, Băile Herculane (CS), 29.05.1956, S.N.

##### *Exocentrus* Dejean, 1835

##### *Exocentrus adpersus* Mulsant, 1846

1 spec., Croatia, Dalmatia, without other data, K.D.; 2 specs, Băile Herculane (CS), 23.07.1956, S.N., 2.07.1967, S.N.; 5 specs, Baia de Aramă (MH), 8.07.1961, S.N.; 1 spec., Greci (TL), 30.06.1964, S.Ig.; 1 spec., Babadag (TL), 20.07.1977, P.G.A.; 9 specs, Italy, Udine, Cialla di Prepotto, 22.06.-6.08.1983, R.P.

##### *Exocentrus lusitanus* (Linnaeus, 1767)

2 specs, without data, F.Ed.; 11 specs, Bucureşti, Băneasa Forest, 10.05.1951, 18.05.1957, S.N.; 16 specs, Băile Herculane (CS), 12-14.06.1952, 2.07.1967, S.N.; 10 specs, Brăneşti, Pasărea Forest (IF), 30.04.1953, 6.06.1959, 4.07.1962, S.N.; 1 spec., Retezat Mts, Gura Zlata, 9.08.1955, S.N.; 3 specs, Comana Forest (GR), 24.06.1954, S.N.; 4 specs, Nucet (DB), 12.07.1956, S.N.; 4 specs, Bârnova (IS), 14.06.1958, S.N.; 1 spec., Canaraua Fetii (CT), 27.05.1962, S.N.; 1 spec., Bucureşti, 5.08.1964, R.A.; 1 spec., Moldova Nouă (CS), 26.05.1973, S.N.

*Exocentrus punctipennis* Mulsant & Guillebeau, 1856

1 spec., Pitești (AG), 6.08.1955, S.N.; 9 specs, Periprava, Danube Delta (TL), 5.07.1956, S.N.; 1 spec., Brănești, Pasărea Forest (IF), 6.06.1959, S.N.; 5 specs, Canaraua Fetii (CT), 15.07.1961, 16.07.1965, 15.05.1967, S.N.; 1 spec., Snagov (IF), 25.08.1963, R.A.; 4 specs, București, 12-22.07.1964, R.A.; 1 spec., Drobeta-Turnu Severin (MH), 7.08.1970, S.N.; 20 specs, Letea Forest, Danube Delta (TL), 11.07.1971, S.N.; 1 spec., Băile Herculane (CS), 13.06.1976, P.G.A.; 1 spec., Babadag Forest (TL), 20.07.1977, P.G.A.

*Leiopus* Serville, 1835*Leiopus nebulosus* (Linnaeus, 1758)

1 spec., Azuga (PH), without other data, F.Ed.; 1 spec., France, Besançon, without other data, M.A.L.; 1 spec., Comana Forest, without other data, M.A.L.; 1 spec., Austria, Graz, without other data, S.N.; 15 specs, Bârnova (IS), 2.06.1953, S.N.; 2 specs, Marila (Oravița) (CS), 1.07.1953, S.N.; 1 spec., Sighetu Marmăției (MM), 23.07.1953; 1 spec., Brănești, Pasărea Forest, 12.05.1955, S.N.; 2 specs, Pojoga (HD), 7.06.1955, S.N.; 3 spec., Retezat Mts, Gura Zlata, 15.06.-9.08.1955, S.N.; 8 specs, Retezat Mts, 25.07.1956, S.N.; 2 specs, Căliman Mts, Răstolnița, 16.06.1956, S.N.; 1 spec., Făgăraș Mts, Capra Peak, 28.07.1957, S.N.; 4 specs, Băile Herculane (CS), 12.07.1953, 22.07.1956, 2.07.1967, 2-5.08.1971, S.N.; 1 spec., Baia de Aramă (MH), 8.07.1961, S.N.; 3 specs, București, 17.06.1964, P.G.A., 01.08.1965, R.A., 17.08.1995, M.I.; 1 spec., Sulina (TL), 8.07.1968, P.G.A.; 10 specs, Moldova Nouă (CS), 25.05.1972, 4.05.-1.06.1973, 25.05.1974, S.N.; 20 specs, Italy, Udine, Cialla di Prepotto, 20.05.1983, R.P.; 1 spec., Stoenești (VL), 7.07.1999, P.S.M.; 1 spec., Sățic, Dragoslăveni Valley (AG), 8.07.2000, S.Au.; 1 spec., Căciulați Forest (IF), 14.07.2001, S.D.; 1 spec., Piatra Craiului Mts, Brusturet chalet, Valea Seacă (AG), 21.06.2005, M.I.

*Oplosia* Mulsant, 1862*Oplosia cinerea* (Mulsant, 1839)

1 spec., Sighișoara (MS), without other data, D.Fr.; 1 spec., Brașov (BV), without other data, D.Fr.; 3 specs, Marila (Oravița) (CS), 1.07.1953, S.N.; 7 specs, Băile Herculane (CS), 29.05.1956, S.N.; 6 specs, Retezat Mts, 25-26.07.1956, S.N.

## Tribe Acanthoderini

*Aegomorphus* Haldeman, 1847

= *Acanthoderes* auct (not Serville, 1835)

*Aegomorphus clavipes* (Schrank, 1781)

1 spec., without data, F.Ed.; 1 spec., Retezat Mts, Gura Zlata, 07.1934, T.E.; 1 spec., Căprioara, Săvârșin (AR), 16.06.1938, T.E.; 21 specs, Băile Herculane (CS), 12.07.-12.08.1953, 23.08.1954, 19.07.1956, 4.08.1967, 5.08.1971, S.N.; 1 spec., Făgăraș Mts, Capra Peak, 28.07.1957, S.N.; 1 spec., C.A. Rosetti, Danube Delta (TL), 5.07.1963, P.S.X.; 3 specs, Canaraua Fetii (CT), 12.06.1964; 1 spec., Marila (Oravița) (CS), 4.08.1977, S.N.; 1 spec., Bistreț (DJ), 8.07.1982, T.Ma.; 1 spec., Lepșa Valley (GJ), 18.06.1992, S.R.; 2 specs, Sfântu Gheorghe, Danube Delta (TL), 28.05.1994, H.C.; 5 specs, Desești, Valley of the Mara river (MM), 17.07.1998, P.S.M.; 1 spec., Pleșca chalet, Ocna Șugatag (MM), 20.07.1998, P.S.M.; 1 spec., 1 km South of health resort Izvoare, Desești (MM), 23.VII.1998, P.S.M.; 2 specs,

Brănești, Pasărea Forest (IF), 13.06.1999; 2 specs, Valley of the Rica river, 3 km upstream Poienile de sub Munte (MM), 14.VI.2003, S.R., S.Mi.; 4 specs, Țibleș Mts, Dragomirești, Baicu f.h. (MM), 21-23.VI.2003, S.R.; 1 spec., Țibleș Mts, Săliște, Idișor streamlet (MM), 23.VI.2003, S.R.; 2 specs, Tarnița (GJ), 9.07.2004, P.A.

### Tribe Agapanthiini

#### *Agapanthia* Serville, 1835

##### *Agapanthia annularis* (Olivier, 1795)

2 specs, Morocco, Volubilis, 29-30.04.2007, C.P., C.S. („Atlas” Expedition); 1 spec., Morocco, Mouley Idriss, 1.05.2007, C.P. („Atlas” Expedition).

##### *Agapanthia cardui* (Linnaeus, 1767)

2 specs, Pojoga (HD), 12.06.1957, S.N.; 10 specs, Italy, Forli, Cesena, 30.05.1970, G.P.; 1 spec., France, Cipières, le Plan, 8.06.1974, B.P.; 4 specs, France, Aiguines, Forêt de Margés, 5.06.1974, B.P.; 1 spec., France, Le Muy, 12.06.1974, B.P.; 1 spec., France, Les Adrets de Frejus, Bord de l'Argentière, 14.06.1974, B.P.; 1 spec., Lipova (AR), 5.06.1976; 2 specs, Spain, Zaragoza, 30.05.1977, G.C.; 1 spec., Florești (GR), 24.05.1997, P.C.

##### *Agapanthia cynarae* (Germar, 1817)

1 spec., Croatia, Krk island, 20.05.1973, R.P.; 6 specs, Clisura Dunării<sup>5</sup>, Oreva (CS), 15-27.05.1976, S.N.; 4 specs, Danube Clisura (Clisura Dunării), Slătinic (CS), 17-26.05.1976, S.N. (Fig. 1 A).

##### *Agapanthia dahli* (Richter, 1821)

1 spec., Mangalia (CT), 8.06.1903, F.Ed.; 1 spec., Azuga (PH), without other data, F.Ed.; 1 spec., Piatra Olt (OT), without other data, F.Ed.; 1 spec., Comana (GR), without other data, M.A.L.; 1 spec., Bulgaria, Veliko Târnovo, without other data; 1 spec., Dalmatia, without other data, K.D.; 8 specs, Brănești, Pasărea Forest (IF), 19.06.1950, 14.06.1959, S.N., 10.05.1977, S.R.; 12 specs, Valu lui Traian (CT), 4.06.1954, 17-22.06.1955, 19-20.06.1958, P.S.X.; 1 spec., Bârnova (IS), 2.06.1953; 1 spec., Cernica Forest (IF), 28.05.1955, R.A.; 4 specs, Babadag Forest (TL), 23.06.1955, S.N., 20.06.1963, P.S.X., 26.05.1970, S.N.; 15 specs, Comana Forest (GR), 12.06.1957, 14.06.1959, 06.1967, S.N., 14.05.1995, P.S.M., 7.06.2006, S.R., 19.05.2009, S.R., F.M., I.I.; 1 spec., Oltenița (CL), 8.05.1959, P.S.X.; 1 spec., Tismana, Cioclovina hermitage (GJ), 4.06.1959, P.S.X.; 37 specs, Canaraua Fetii (CT), 29.06.1956, 19.06.1960, S.N., 11.06.-17.07.1964, N.St., 17.05.-9.07.1972, 25.04.1982, 18.06.1983, S.N., 19.05.-20.07.1993, A.G., 26.06.1995, P.C.; 1 spec., Ciovârșani (MH), 24.06.1961, S.N.; 1 spec., București, Andronache Forest, 24.05.1962, P.G.A.; 1 spec., Brănești, Pustnicu Forest (IF), 5.07.1962, R.A.; 3 specs, Mangalia, Comarova Forest, (CT), 2.06.1962, P.G.A., D.I., 18.06.1964, P.S.X.; 1 spec., Techirghiol (CT), 20.06.1962, P.S.X.; 1 spec., Tulnici (VN), 22.07.1962, R.A.; 20 specs, Hagieni Forest (CT), 4.06.1962, P.G.A., 29.06.1963, S.N., 4-6.06.1964, S.N., N.St., 9.07.1992, S.R., 18.07.1997, S.M.; 1 spec., Chilia Veche (TL), 28.06.1963, P.S.X.; 7 specs, Agigea (CT), 28.05.1963, P.G.A., 15-18.06.1964,

<sup>5</sup> Clisura Dunării (Danube Clisura) is situated between Nera river in the West, and Gura Văii in the East.

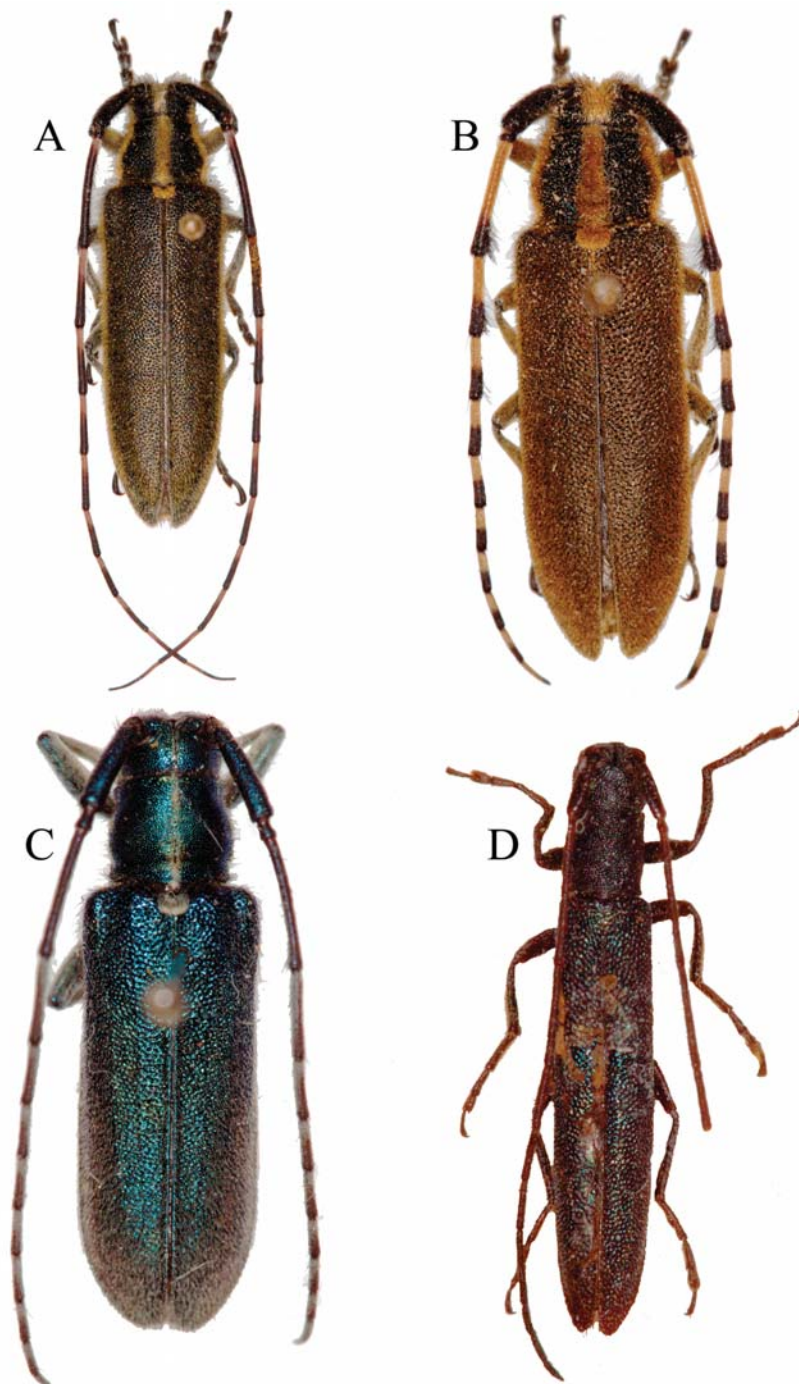


Fig. 1 - A, *Agapanthia cynarae*; B, *Agapanthia kirbyi*; C, *Agapanthia osmanlis*; D, *Theophilea subcylindricollis*. (Photos: I. Șt. Iorgu)

P.G.A., N.St.; 1 spec., Periprava, Danube Delta (TL), 13.05.1964, W.M.; 1 spec., Moldova Nouă (CS), 29.06.1964, S.N.; 1 spec., Băile Herculane (CS), 28.06.1965, P.G.A.; 3 specs, Dumbrăveni Forest (CT), 23.05.1965, S.N., 21.05.1994, 29.06.1995, A.G.; 2 specs, Sfântu Gheorghe, Danube Delta (TL), 19.08.1971, S.N., 28.05.1994, H.C.; 1 spec., Arad (AR), 5.07.1974, C.A.; 14 specs, Clisura Dunării, Orevă (CS), 19-28.05.1976, S.N.; 2 specs, Clisura Dunării, Slătinic (CS), 26-28.05.1976, S.N.; 5 specs, Gura Văii (MH), 19.05.1978; 1 spec., Ciucurova (TL), 19.06.1981, S.N.; 8 specs, Esecchio (CT), 19.04.1982, 12.06.1983, 11.05.1991, S.N.; 1 spec., Bistreț (DJ), 31.05.1982, W.M.; 4 specs, Albești (CT), 19.05.1983, S.N.; 1 spec., Turnu Roșu (SB), 13.05.1986, D.I.; 2 specs, Cheia (CT), 23.06.1993, M.I.; 3 specs, Popina Island, Razelm (Razim) Lake, 8.06.1994, H.C.; 2 specs, Rotbav (BV), 20.05.1996, P.S.M.; 30 specs, Olimp resort, North Mangalia (CT), 19-20.07.2003, S.R., P.A., C.G., F.M., A.A.M.; 2 specs, Tuzla (CT), 21.07.2003, F.M.; 1 spec., Cheson, Slobozia (IL), 10.06.2004, P.C.; 1 spec., Brănești (IF), 27.06.2007, S.Me.

*Agapanthia irrorata* (Fabricius, 1787)

1 spec., Algeria, without other data, M.A.L.; 1 spec., Morocco, without data; 1 spec., Italy, Sicily, Bosco della Ficuzza, 3.06.1975, S.G.; 1 spec., Italy, Sicily, Nebrodi Mts, Randazzo, 04.1976, S.G.; 2 specs, Italy, Sicily, Madonie Mts, Isnella, 06.1977, S.G.; 23 specs, Morocco, Volubilis, 1-30.04.2007, C.P., R.Z., C.S., S.G. („Atlas” Expedition); 6 specs, Morocco, Mouley Idriss, 1.05.2007, C.P.

*Agapanthia kirbyi* (Gyllenhal, 1817)

36 specs, Canaraua Feti (CT), 14.05.1958, 17.05.1972, S.N.; 1 spec., Băile Herculane (CS), 3.07.1960, S.N.; 1 spec., Clisura Dunării, Orevă (CS), 17.05.1976, S.N. (Fig. 1 B).

*Agapanthia osmanlis* Riche & Saulcy, 1858

2 specs, Bulgaria, Veliko Târnovo, without other data; 205 specs, Comana Forest (GR), 30.05.1954, 24.05.1958, 21.05.1959, 9.06.1963, S.N., 27.05.1990, 17.05.1997, P.S.M., 19.05.2009, S.R., F.M.; 2 specs, Snagov Forest (IF), 24.07.1963, S.N. (Fig. 1 C).

*Agapanthia sicula* Ganglbauer, 1884

2 specs, Italy, Sicily, Capaci, 20.03.1975; 1 spec., Italy, Sicily, Nebrodi Mts, Randazzo, 1.06.1975, S.G.; 1 spec., Italy, Sicily, Enna, Cerami, 05.1977, S.G.

*Agapanthia suturalis* (Fabricius, 1787)

3 specs, Tunisia, Kerkennah Islands, Setnou Island, 20-21.03.2006, C.P. („Punia” Expedition); 2 specs, Morocco, Merja Zerga (lagoon), 13.04.2007, C.P. („Atlas” Expedition).

*Agapanthia villosoviridescens* (De Geer, 1775)

1 spec., Kapelenberg (Tâmpa, Brașov), without other data, D.Fr.; 1 spec., Burgberg (Vurpăr) (AB), without other data; 1 spec., Agârbiciu (CJ), without other data; 6 specs, Băile Herculane (CS), 9.06.1951, 15.06.1952, 14.07.1960, 12.05.1961, 4.07.1964, 15.05.1977, S.N.; 9 specs, Bârnova (IS), 4.06.1953, S.N.; 4 specs, Retezat Mts, Gura Zlata, 2.06.1954, S.N., 30.06.1985, P.C.; 2 specs, Căldărușani,

Brazi (IF), 31.05.1957, P.S.X.; 1 spec., Tismana, Cioclovina hermitage (GJ), 4.06.1959, P.S.X.; 53 specs, Canaraua Fetii (CT), 15.05.1958, 27-29.05.1962, 17.05.1972, S.N., 18-20.05.1993, P.C., P.A., H.C.; 1 spec., Șelimbăr (SB), 27.06.1961, S.N.; 4 specs, Periprava, Danube Delta (TL), 23.06.1962, S.N., 24.06.1967; 1 spec., Bulgaria, Varna, 4.06.1967, S.N.; 6 specs, Esechioi (CT), 14.05.1963, 20.06.1968, S.N.; 2 specs, Agigea (CT), 28.05.1963, P.S.X., 18.06.1964, N.St.; 6 specs, Mangalia, Comarova Forest (CT), 30.05.1963, 5.06.1965, P.S.X.; 1 spec., Snagov Forest (IF), 24.07.1963, S.N.; 1 spec., Oltina (CT), 8.05.1965, S.N.; 4 specs, Dumbrăveni Forest (CT), 23.05.1965, S.N., 18.05.1994, H.C.; 1 spec., Hagieni Forest (CT), 6.06.1965, P.S.X.; 13 specs, Caraorman, Danube Delta (TL), 11.05.-18.06.1967, P.S.X., S.Al., 1.05.-2.06.1968, P.G.A., D.I., 12.06.-20.07.1969, N.St., P.S.X.; 1 spec., Valley of Ialomița river, Slobozia (IL), 23.05.1967, W.M.; 2 specs, Ploiești (PH), 29.06.1967, R.A.; 1 spec., Cheia (PH), 26.07.1967, P.S.X.; 3 specs, Domogled Mt., Cerna Mts, 3.07.1968, B.V.; 2 specs, southern Dobrogea (CT), 2.06.1969, S.N.; 8 specs, Sinaia, Izvorul Dorului (PH), 27-29.06.1971, S.N.; 1 spec., Neptun resort, North Mangalia (CT), 9.09.1973, P.G.A.; 6 specs, Babadag Forest (TL), 25.05.1975, S.N.; 1 spec., Făgăraș Mts, 8.07.1976, P.S.X.; 2 specs, Lipova (AR), 5.06.1976; 1 spec., Moara Vlășiei (IF), 10.06.1978, A.G.; 3 specs, Stăncești (PH), 18.05.1978, S.N.; 3 specs, Tușnad (HG), 10.06.1978, P.S.X.; 1 spec., Chitila, Râioasa Forest (IF), 6.05.1979, A.G.; 1 spec., Mangalia, Comarova Forest (CT), 2.06.1982, S.N.; 1 spec., Strehaia (MH), 24.06.1983, P.C.; 1 spec., Săcuieni, Lacul Vărgat swamp (BH), 24.06.1986, G.N.; 5 specs, Plaiul Foi, Piatra Craiului Mts (BV), 11-12.07.1990, S.R., 9.06.2000, M.S.; 1 spec., Lupșa Valley, Motru Sec (GJ), 18.06.1992, S.R.; 1 spec., Negureni Forest (CT), 16.05.1994, A.G.; 1 spec., Trăiseni, Doftana Valley (PH), 26.06.1994, P.C.; 9 specs, Dumbrăveni Forest, Furnica (CT), 14-15.05.1995, P.C., A.G., A.M.; 2 specs, Rotbav (BV), 20.05.1996, P.S.M.; 1 spec., Telița, Celic Dere (TL), 20.05.1997, P.C.; 1 spec., Valea Teilor (TL), 22.05.1997, P.C.; 2 specs, Tataru dam on the Mara River (MM), 16.07.1998, P.S.M., P.An.; 1 spec., border of Coșeu River, Cornești (MM), 19.07.1998, P.C.; 2 specs, Piatra Craiului Mts, Speranța Valley, 9.06.2000, P.C.; 1 spec., Bârsa Groșetului, Piatra Craiului National Park, 9.06.2000, P.C.; 1 spec., Poienile de sub Munte, Lutoasa Valley (MM), 14.06.2003, P.C.; 2 specs, Ostrov islet, upstream the confluence of the Danube with the Jiu River (GJ), 17.05.2004; 1 spec., Valley of Polatiștea rivulet, „Defileul Jiului” National Park (GJ), 7.07.2004, B.C.; 4 specs, Maramureș Mts, Valley of Vaser River, Făina (MM), 19-20.VI.2003, S.R., 22.07.2004, C.G.; 1 spec., Țibleș Mts, Dragomirești, Baicu f.h. (MM), 21.06.2003, P.C.; 5 specs, Piatra Craiului National Park, Sățic (AG), 22.06.2005, S.R., P.E.; 2 specs, Comana Forest (GR), 19.05.2009, S.R.

*Agapanthia violacea* (Fabricius, 1775)

5 specs, Comana Forest (GR), without other data, M.A.L., 8.06.1955, 26.05.1963, 24.07.1965, R.A., 27.05.1990, P.S.M.; 8 specs, București, Băneasa Forest, 29.05.1952, S.N.; 2 specs, Cernica Forest (IF), 29.05.1956, R.A.; 14 specs, Băile Herculane (CS), 29.05.1956, 12.05.1961, 9.05.1962, 19.-20.05.1963, 24.05.1965, 21.05.1967, 15.06.1968, S.N., 20.06.1970, P.S.X., 15.07.1979, S.N.; 1 spec., Căldărușani (IF), 31.05.1957, P.S.X.; 1 spec., Oltina (CT), 13.05.1958, P.S.X.; 1 spec., Tismana (GJ), 3.06.1959, P.S.X.; 2 specs, southern Dobrogea (CT), 29.05.1962, S.N.; 1 spec., Esechioi (CT), 25.05.1962, S.N.; 30 specs, Canaraua Fetii (CT), 16-27.05.1962, 15.05.1963, S.N., 30.05.1965, N.St., 17.05.1972, S.N., 18-



20.05.1993, P.C., P.A., H.C., A.M., 19.05.1994, P.C.; 8 specs, Mangalia, Comarova Forest (CT), 2.06.1962, S.N., 30.05.1963, 5.06.1965, P.S.X.; 2 specs, Hagieni (CT), 19.06.1964, P.S.X., P.G.A.; 3 specs, Dumbrăveni Forest (CT), 23.05.1965, S.N.; 1 spec., Letea Forest, Danube Delta (TL), 20.07.1966, S.N.; 2 specs, Țigănești, Ciolpani (IF), 26.04.1966, R.A., P.S.X.; 1 spec., Adamclisi (CT), 22.05.1967, R.I.V.; 1 spec., Brateș, 27.05.1968; 6 specs, Italy, Forli, Cesena, 30.05.1970, G.P.; 1 spec., Nucet (DB), 15.06.1970, A.I.; 11 specs, Iortmac Lake (CT), 17.05.1972, S.N.; 1 spec., Moldova Nouă (CS), 20.05.1973, S.N.; 2 specs, Cocoș monastery (TL), 10.06.1973, C.A., 7.07.1975, P.G.A.; 5 specs, Clisura Dunării, Orevă (CS), 25.05.1976, S.N.; 3 specs, Zăvestreni Forest (TR), 24.06.1977, P.G.A., 2.05.1979, 3.05.1980, S.R.; 2 specs, Budești (CL), 25.05.-5.06.1979, W.M., S.R.; 3 specs, Babadag Forest (TL), 12.05.1982; 1 spec., Bistreț (DJ), 31.05.1982, W.M.; 10 specs, Gura Motrului (MH), 21.06.1983, S.R., P.C., M.I., D.I.; 5 specs, Strehaia (MH), 24.06.1983, S.R., M.I.; 1 spec., Dridu (IF), 11.06.1987, P.C.; 2 specs, București, 12.05.1994, 29.05.1995, P.S.M.; 2 specs, Negureni (CT), 16.05.1994, A.G., 25.06.1995, P.C.; 1 spec., Călugăreni (GR), 11.05.1996, P.C.; 1 spec., Ciucurova (TL), 22.05.1997, H.C.; 1 spec., Valea Teilor (TL), 22.05.1997, S.R.; 2 specs, Teița (TL), 20.05.1997, P.C.; 2 specs, Revărsarea (TL), 23.05.1997, S.R.; 1 spec., Greaca (CL), 8.06.1997, P.S.M.; 1 spec., Repedea f.h. (MM), 17.06.2003, S.Me.; 1 spec., Coșnea f.h., Poienile de sub Munte (MM), 15.06.2003, S.Me.

*Agapanthiola* Ganglbauer, 1900

*Agapanthiola leucaspis* (Steven, 1817)

2 specs, Govora ? (VL), without other data, F.Ed.; 3 specs, Dobrogea, without other data, F.Ed.; 32 specs, Agigea (CT), 15-19.06.1953, 12.06.1961, S.N., 29.05.-18.06.1962, P.G.A., D.I., 27-31.05.1963, P.S.X., P.G.A., 15.06.-20.07.1964, W.M., P.S.X., P.G.A.; 1 spec., Murfatlar (CT), 12.07.1953, S.N.; 10 specs, Valu lui Traian (CT), 19-21.05.1955, 14.06.1956, 19.06.1958, P.S.X., 1.06.1961, W.M.; 1 spec., Săbăreni, Joița (IF), 17.05.1958, R.A.; 3 specs, Canaraua Fetei (CT), 29.05.1962, S.N., 19.06.1964, N.St., 20.05.1993, H.C.; 10 specs, Mangalia, Comarova Forest (CT), 2.06.1962, P.G.A., 30.05.1963, P.S.X.; 14 specs, Esehioi (CT), 25.05.1962, 19.05.1967, 25.06.1984, 1.07.1987, S.N.; 22 specs, Hagieni Forest (CT), 19.06.1962, R.A., 6-8.06.1963, P.G.A., 4-20.06.1964, N.St., D.I., 21.06.1965, 30.05.1973, P.G.A.; 7 specs, C. A. Rosetti, Danube Delta (TL), 5.07.1963, 20.07.1964, 30.05.-7.06.1981, P.S.X.; 2 specs, Dumbrăveni Forest (CT), 23.05.1965, S.N.; 1 spec., Niculițel (CT), 28.06.1967, P.S.X.; 4 specs, Periprava, Danube Delta (TL), 24.06.1966, N.St., 30.05.1974, B.V.; 1 spec., Caraorman, Danube Delta (TL), 12.06.1969, N.St.; 19 specs, Letea Forest, Danube Delta (TL), 5.06.1979, P.G.A., 26-30.05.1980, P.G.A., P.S.X.; 4 specs, Hagieni Forest (CT), 28-29.05.1984, P.G.A., D.I., 11.07.1992, S.R.; 2 specs, Greaca (CL), 8.06.1997, P.S.M.

*Calamobius* Guérin, 1846

*Calamobius filum* (Rossi, 1790)

178 specs, Agigea (CT), 30.05.1962, P.G.G., 3-31.05.1963, P.G.A., D.I., 12-17.06.1964, 5-12.06.1967, S.N.; 1 spec., France, Les Adrets de Frejus, Bord de l'Argentière, 14.06.1974, B.P.; 4 specs, Spain, Huesca, Riglos, 23.05.1976, G.C.; 1 spec., France, Pyrénées Orientales, Banyuls-sur-Mer, 5.05.1989; 1 spec., Turkey, Kahramanmaraş, Karatepe-Aslantaş, 5.05.1998, P.S.M.; 4 specs, Balauru hill,

Beceni (BZ), 15.06.2002, 20.04.2003, U.V.; 1 spec., Morocco, Volubilis, 30.04.2007, C.S. („Atlas” Expedition); Cherrat, oued Bouznika, 15.04.2007, C.G., G.S. („Atlas” Expedition); 17 specs, Turkey, Kahmaranmaraş, altitude: 570 m, 1.06.2008, P.C., B.G. („Euphrates” Expedition); 1 spec., Syria, Jobeth Birghal, at 4 km South of the Citadel Salah Ed-Din (Saladin), 22.05.2008, P.C. („Euphrates” Expedition).

*Theophilea* Pic, 1895

*Theophilea subcylindricollis* Hladil, 1988

3 specs, Republic of Moldova, Chişinău, 1937, W.E. (Fig. 1 D).

Tribe Apodasyini

*Anaesthetis* Dejean, 1835

*Anaesthetis testacea* (Fabricius, 1781)

2 specs, Laculez (in southern Bucharest), without other data, F.Ed.; 1 spec., Măcin (TL), without other data, M.A.L.; 1 spec., Haţeg (HD), without other data, K.D.; 1 spec., Transylvania, without other data, K.D.; 2 specs, Dalmatia, without other data, K.D.; 1 spec., Băile Felix, Oradea (BH), 1911, V.E.; 1 spec., Comana Forest (GR), 27.05.1935; 3 specs, Mireşu Mare (Nagynyires) (MM), 1942, V.E.; 5 specs, Pojoga (HD), 7.06.1955, 27.06.1957, S.N.; 1 spec., Hăşmacul Mare, C. A. Rosetti, Danube Delta (TL), 14.07.1964, N.St.; 1 spec., Bârlad (VS), 18.06.1973, R.A.; 1 spec., France, Aiguines, Forêt de Margés, 5.06.1974, B.P.; 3 specs, France, Les Adrets de Frejus, Bord de l'Argentièrre, 14.06.1974, B.P.; 5 specs, Italy, Udine, Cialla di Prepotto, 5.08.1983, R.P.

*Deroplia* Dejean, 1835

*Deroplia genei* (Aragona, 1830)

2 specs, southern Dobrogea, Baş Punar, 15.06.1955, 15.05.1958, S.N. (Fig. 3 A).

*Deroplia troberti troberti* (Mulsant, 1843)

1 spec., France, Côte d'Azur, Saint-Raphaël, Estérel, 18.04.1969, B.P.

Tribe Dorcadiini

*Carinatodorcadion* Breuning, 1943

*Carinatodorcadion aethiops* (Scopoli, 1763)

2 specs, Băile Felix, Oradea (BH), 1911, V.E.; 1 spec., Cluj (CJ), 15.07.1949; 3 specs, Arad, Ceala Forest (AR), 05.1951, S.N.; 4 specs, Timişoara (TM), 19.06.1951, S.N.; 1 spec., Reşiţa (CS), 27.06.1953, S.N.; 13 specs, Esechioi (CT), 19.05.1958, 18.06.1960, 9.06.1961, 14.05.1963, 8.05.1966, 16.06.1980, 29.05.1982, 8.05.1986, S.N.; 2 specs, Esechioi, Bugeac (CT), 7.06.1960, P.G.A.; 49 specs, Moldova Nouă (CS), 27-29.06.1964, 5-25.05.1973, S.N.; 2 specs, Canaraua Fetii (CT), 17-19.07.1964; 2 specs, Băile Herculane (CS), 25.04.1983, S.N.; 1 spec., Botiz (SM), 28.06.1985, A.G.; 1 spec., Hagieni Forest (CT), 1.06.1988, S.N.

*Carinatodorcadion fulvum* (Scopoli, 1763)

46 specs, Mătăsar (DB), 4.06.1960, S.N.; 1 spec., Daia (IF), 1.07.1948; 136 specs, Bucureşti, Băneasa Forest, 10.05.1952, 24.05.1954; 24.04.1971, 30.04.-12.05.1974,

19.05.1991, S.N.; 4 specs, Botoșani (BT), 17.05.1956, S.N.; 1 spec., Mogoșoaia Forest (IF), 4.06.1957, S.Ig.; 1 spec., Snagov Forest (IF), 25.06.1957, R.A.; 1 spec., Suceava, Scheia Forest (SV), 10.05.1959, P.G.A.; 31 specs, Drobeta-Turnu Severin (MH), 9.08.1961, 21.07.-2.08.1962, 2-19.07.1970, S.N.; 6 specs, Dobrosloveni (OT), 15.04.1962; 2 specs, Nucet (DB), 25.04.1962, S.N.; 1 spec., Canaraua Fetii (CT), 27.04.1963, S.N.; 4 specs, Brănești, Pustnicu Forest (IF), 8.05.1963, P.S.X., R.A.; 3 specs, Brănești, Pasărea Forest (IF), 8.05.-6.06.1963, P.G.A., S.Ig., 19.06.1965, R.A.; 2 specs, Țigănești, Ciolpani (IF), 26.04.1966, R.A., P.S.X.; 11 specs, Sinaia (PH), 29.09.1966, N.St., 29.07.1979, S.N.; 1 spec., Săbăoani (NT), 24.05.1967; 1 spec., Stejaru, Valea Ursului (NT), 29.04.1970; 1 spec., Nicolae Titulescu (OT), 25.06.1980, P.C.; 1 spec., Băile Herculane (CS), 19.05.1985, S.N.; 8 specs, Spătaru Forest, Costești (BZ), 12.05.-24.06.1987, P.C., G.N.; 2 specs, Muddy Volcanoes (Vulcanii Noroioși), Small Mists (Păclele Mici) (BZ), 1.05.1989, M.I.; 1 spec., București, 19.04.1991, S.N.; 7 specs, Dumbrăveni Forest (CT), 21.05.1994, A.G.; 1 spec., Găiseni (GR), 20.05.1996, I.Al.; 1 spec., Tunele, Sasca Montană (CS), 9.08.2005, P.E.; 15 specs, Vizireanu hill, Berca, Beceni (BZ), 4.05.2003, U.V., 16.04.-4.05.2005, U.V.; 1 spec., Crâng Park, Buzău (BZ), 18.06.2003, U.V.; 1 spec., Balauru hill, Izvorul Dulce, Beceni (BZ), 12.05.2004, U.V.

*Iberodorcadion* Breuning, 1943

*Iberodorcadion fuliginator fuliginator* (Linnaeus, 1758)

1 spec., France, without other data; 1 spec., Germany, Stuttgart, without other data; 2 specs, France, Val-de-Marne, Rungis, 25.04.1956, B.P.

*Iberodorcadion fuliginator meridionale* (Mulsant, 1839)

1 spec., France, Pyrénées-Atlantiques, Urrugne, col d'Ibardin, 6.05.1966; 2 specs, France, Mt. Lure, Basses Alpes, 28.06.1967, B.J.; 3 specs, France, Pic'Orly, Basses Pyrénées, 25.06.1969, B.J.

*Iberodorcadion navasi* (Escalera, 1900)

6 specs, Spain, Alrededores de Zaragoza, 27.03.1970, R.V., 26.03.1975, R.V.; 4 specs, Spain, Zaragoza, 25.03.1975, G.C.

*Iberodorcadion perezii hispanicum* (Mulsant, 1851)

4 specs, Spain, without other data, M.A.L.

*Iberodorcadion neilense* (Escalera, 1902)

2 specs, Spain, Sierra de la Demanda, Logrono, 15.04.1981, B.F.

*Iberodorcadion seoanei seoanei* (Graells, 1858)

4 specs, Spain, Zamora, Serra Cabrera Boja, 1.07.1980, B.F.

*Iberodorcadion spinolae caunense* (Lauffer, 1817)

2 specs, Spain, Moncayo, Zaragoza, 1.07.1975, G.C.

*Neodorcadion* Ganglbauer, 1884*Neodorcadion bilineatum* (Germar, 1824)

1 spec., București, without other data, M.A.L.; 1 spec., Mangalia (CT), without other data, M.A.L.; 1 spec., Măcin (TL), without other data, M.A.L.; 1 spec., Romanați county, without other data, M.A.L.; 2 specs, Lacul Sărat, Brăila (BR), without other data, M.A.L.; 3 specs, Budești (CL), 20.06.1947, 16.05.1958, R.A.; 1 spec., Calafat (DJ), 04.1953, S.N.; 1 spec., Sibiu (SB), 18.05.1953; 1 spec., București, Andronache Forest, 21.09.1953; 2 specs, București, Băneasa Forest, 24.05.1954, 21.06.1965, N.St.; 1 spec., Valu lui Traian (CT), 21.05.1955; 30 specs, Esecchioi (CT), 12.05.1961, S.N., 25.04.-17.05.1963, S.N., N.St., 30.05.1978, 19.04.1981, 12.06.1983, S.N.; 1 spec., Târgu Jiu (GJ), 20.06.1956, R.I.V.; 2 specs, Eforie (CT), 18.06.1958, P.S.X.; 1 spec., Mogoșoia Forest (IF), 26.05.1959, R.A.; 1 spec., Perișor Forest (DJ), 7.06.1960; 1 spec., Prundu (IF), 15.05.1961, W.M.; 1 spec., Constanța (CT), 21.06.1962, R.A.; 4 specs, Hagieni Forest (CT), 5.06.1962, P.G.A., 6.06.1964, S.N., 7.06.1965, N.St.; 1 spec., Techirghiol (CT), 20.06.1962, R.A.; 3 specs, Agigea (CT), 27.05.1963, P.G.A., 27.04.1964, N.St., 5.06.1979, D.A.; 7 specs, Iortmac Lake (CT), 15.05.1963, S.N.; 19 specs, Canaraua Fetii (CT), 18-26.05.1963, 17.07.1964, S.N., 30.06.1965, N.St., 18.05.1993, 19.05.1994, P.C.; 2 specs, Brănești, Pustnicu Forest (IF), 27.05.1963, R.A.; 2 specs, Babadag Forest (TL), 20.06.1963, P.S.X.; 3 specs, Comana Forest (GR), 12.07.1963, N.St.; 3 specs, Budești (IF), 3.06.1965, 6.06.1979, D.A.; 1 spec., Ieșelnița (MH), 14.06.1969, P.G.A.; 4 specs, București, 13.05.-56.06.1971, 17.05.1974, R.A., 15.07.1981, P.G.A.; 29 specs, Cocoș monastery (TL), 8.06.1973, C.A., 9.05.-17.X.1975, D.I., C.A.; 3 specs, Bistreț (DJ), 1-2.06.1982, W.M., P.C.; 1 spec., Saru Forest (OT), 20.06.1982, M.D.; 2 specs, Drobeta-Turnu Severin, Mușa Forest (MH), 5.06.1984, P.C., M.I.; 3 specs, Hinova (MH), 6-7.06.1984, P.C., S.R.; 1 spec., Târgu Cărbunești (GJ), 13.07.1984, M.I.; 1 spec., Spătaru Forest (BZ), 24.06.1987, P.C.; 2 specs, Stoenesti (VL), 7.07.1990, P.S.M.; 1 spec., Popina Island, Razelm (Razim) Lake, 17.06.1991, G.N.; 1 spec., Enisala, Danube Delta (TL), 27.06.1991, G.N.; 8 specs, Negureni Forest (CT), 24.04.-18.05.1994, H.C., 25.06.1995, P.C.; 10 specs, Dumbrăveni Forest (CT), 21.05.1994, G.A., 14.05.1995, P.C., 25-28.06.1995, A.G., 18.06.1996, S.M.; 6 specs, Dumbrăveni Forest, Furnica (CT), 21-22.05.1997, P.C.; 1 spec., Ciucurova (TL), 22.05.1997, P.C.; 31 specs, Celic Dere (TL), 20-24.05.1997, S.R., H.C.; 1 spec., Telița (TL), 24.05.1997, P.C.; 1 spec., Vizireanu hill, Berca, Beceni (BZ), 4.05.2003, U.V.; 1 spec., București, Herăstrău Park, 5.04.2004, U.V.; 1 spec., Pietroșani (GR), 28.04.2004, P.C.; 4 specs, Balauru hill, Beceni (BZ), 4.05.2005, U.V.; 1 spec., Belciugatele (CL), 13.07.2005, U.V.; 1 spec., Lacul Sărat (TL), 25.05.2005, S.R.; 1 spec., Valea Fagilor, Luncavița (TL), 24.05.2005, S.R.; 1 spec., Beciu, Scorțoasa (BZ), 30.05.2007, U.V.; 3 specs, Bulgaria, Scorpilovici, 1.08.1994, P.S.M.

*Neodorcadion exornatum* (Frivaldsky, 1835)

3 specs, Canaraua Fetii (CT), 5-9.05.1958, 9.05.1967, S.N.; 15 specs, Esecchioi (CT), 14.05.1958, 14.05.1967, S.N.; 7 specs, Iortmac Lake (CT), 11-14.05.1958, S.N.; 2 specs, Vârvoru de Jos (DJ), 16.08.1962; 2 specs, Hagieni (CT), 29.06.1963, S.N.; 1 spec., Babadag Forest (TL), 25.05.1975, S.N. (Fig. 2 A, B).

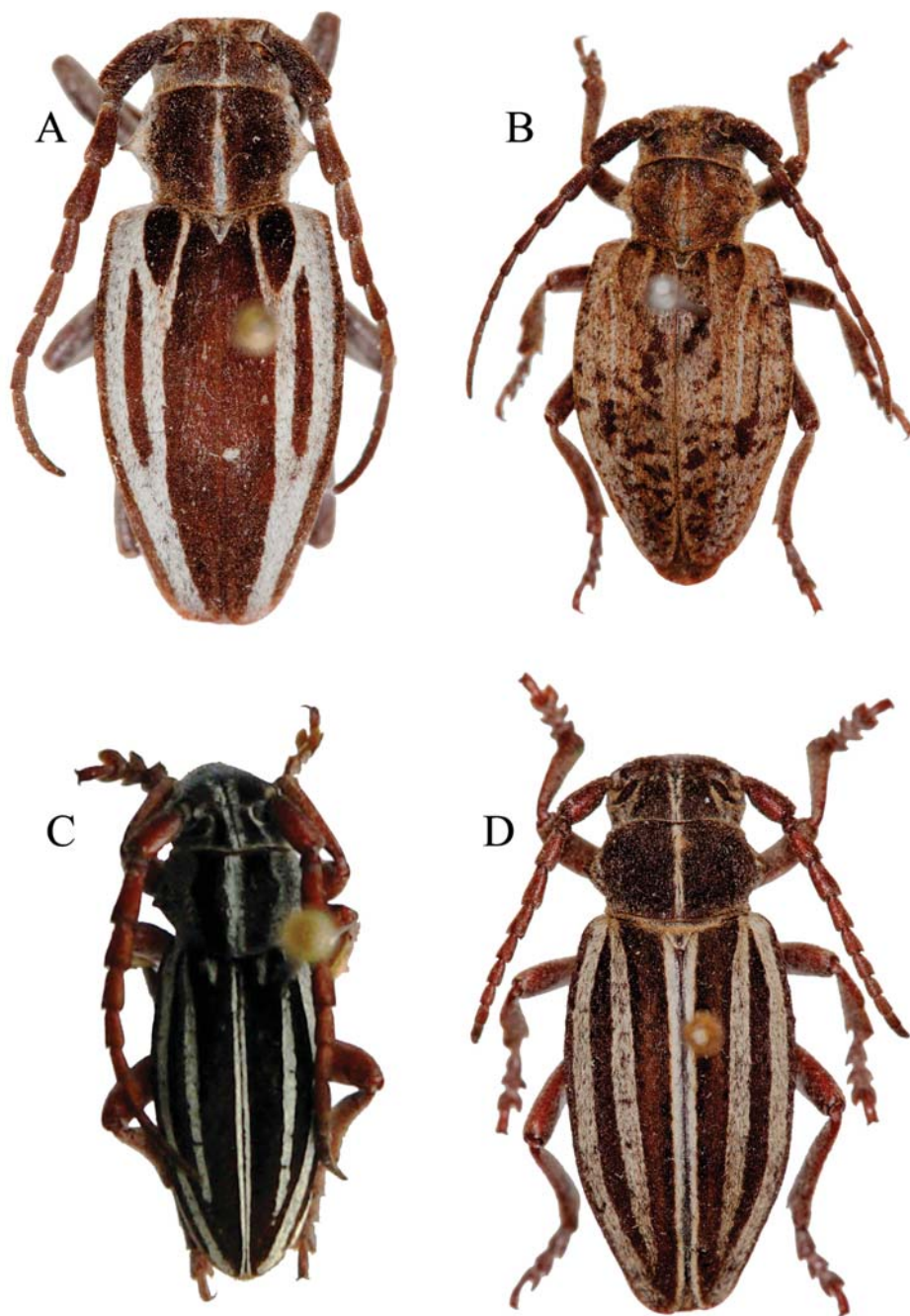


Fig. 2 - A, *Neodorcadion exornatum* male; B, *Neodorcadion exornatum* female; C, *Pedestredorcadion* sp.; D, *Pedestredorcadion scopoli*. (Photos: A, B, D - I. Șt. Iorgu; C - G. Chișamera)

*Pedestredorcadion* Breuning, 1943*Pedestredorcadion arenarium* (Scopoli, 1763)

4 specs, Italy, Ravenna, Bognacavallo, 15.05.1968, G.P.; 7 specs, Italy, Ravenna, Cotignola, 15.03.1967, 1-15.03.1971, G.P., 7.04.1972, S.A.

*Pedestredorcadion decipiens* (Germar, 1824)

1 spec., Bârlad Valley (VS), without other data, M.A.L.; 1 spec., Breazu (IS), 5.05.1961, P.G.A.; 97 specs, Esecchio (CT), 14.05.1962, 8.05.1966, 26-29.05.1982, S.N.; 1 spec., Șelimbăr (SB), 29.05.1963, S.N.; 1 spec., Babadag Forest (TL), 1.06.1963, S.N.; 2 specs, Hungary, Taksony, 19.04.1970, 10.04.1971.

*Pedestredorcadion equestre* (Laxmann, 1770)

2 specs, Republic of Moldova, Chișinău, 14.05.1936; 1 spec., Botoșani (BT), 17.05.1956; 2 specs, Oltina (CT), 23.04.1956, S.N.; 7 specs, Șelimbăr (SB), 29.05.1963, 20.05.1974, S.N.; 7 specs, Vizireanu hill, Berca, Beceni (BZ), 1.09.1999, 4.05.2003, U.V., 16.04.2005, U.V.; 1 spec., Muddy Volcanoes (Vulcanii Noroioși), Big Mists (Pâcelele Mari) (BZ), 18.04.2002, U.V.; 3 specs, Balauru hill, Izvorul Dulce, Beceni (BZ), 20.04.2003, U.V.

*Pedestredorcadion equestre transsilvanicum* Ganglbauer, 1884

3 specs, București, without other data, M.A.L.; 90 specs, Pitești (AG), 22.04.1951, 20.04.1952, 20.04.1954, 9.05.1957, 2.05.1958, 2-4.06.1960, 9.05.1961, 20.04.1964, 24-29.04.1970, S.N.; 1 spec., Bârsani (GJ), 22.06.1954, R.I.V.; 4 specs, Dobrosloveni (OT), 15.04.1962; 1 spec., Găiseni (GR), 20.05.1996, I.A.I.

*Pedestredorcadion holosericeum holosericeum* Krynický, 1832

14 specs, Botoșani (BT), 17.05.1956, S.N.; 2 specs, Suceava (SV), 12.05.1960, P.G.A.; 1 spec., Dorohoi (BT), 10.05.1974.

*Pedestredorcadion litigiosum litigiosum* (Ganglbauer, 1884)

7 specs, Cernavodă (CT), without other data, M.A.L.; 4 specs, Măcin (TL), without other data, M.A.L.

*Pedestredorcadion murrayi* (Küster, 1847)

1 spec., Azuga (PH), without other data, F.Ed.; 1 spec., Bârlad Valley (VS), without other data, M.A.L.; 10 specs, Comana (GR), without other data, M.A.L., 1938, 30.05.1941, 5.04.1942; 1 spec., Băile Felix, Oradea (BH), 1911, V.E.; 1 spec., Dâmbovița county, 1950; 2 specs, Gemenea (DB), 3.06.1950; 4 specs, Râncă Novaci, Novaciu Mts (GJ), 26.06.1951, L.I.; 66 specs, Pitești (AG), 20.04.1952, 20.04.1954, 3.05.1959, 4.06.1960, 29.04.1967, 19-28.04.1970, 21-25.04.1974, S.N.; 2 specs, Căldărușani (IF), 23.03.1957, R.A.; 5 specs, Brănești, Pasărea Forest (IF), 24.04.1960, W.M., 29.04.-2.05.1963, R.A, B.V., 2.05.1975, S.N.; 2 specs, Craiova (DJ), 19.03.1961; 5.06.1964, N.St.; 65 specs, București, 18.04.1958, 17.04.1961, S.N., 25.04.1962, 15.04.1963, R.A., 25.06.1966, B.V., 14.04.1972, R.A., 20.04.1974, N.M., 2.04.1975, R.A., 18.04.1976, S.R., 30.03.-4.04.1984, P.G.A., 21.04.-19.05.1987, S.N., N.M., 1.04.1989, N.M., 14.04.1991, S.N.; 10 specs, Dobrosloveni (OT), 15.04.1962; 17 specs, Nucet (DB), 25.04.1962, S.N.; 5 specs, Cernica Forest (IF), 17.04.1963, R.A.; 22 specs, București, Băneasa Forest, 24.04.1971, 4-7.05.1974, 29.04.1975, 16.06.1986, S.N.; 1 spec., Periprava, Danube

Delta (TL), 5.07.1974, P.G.A.; 2 specs, Aiud (AB), 7-9.04.1980, V.C.; 1 spec., Turda (CJ), 3.08.1982, S.N.; 1 spec., Strehaiia (MH), 13.05.1982, D.D.; 6 specs, Bâltanele (Prunișor) (MH), 16.05.1982, D.D.; 2 specs, Călugăreni (GR), 1.05.1985, P.C.; 2 specs, Spătaru Forest, Costești (BZ), 12.05.1987, G.N.; 3 specs, Stoenesti (VL), 7.07.1990, P.S.M.; 1 spec., Găiseni (GR), 20.05.1996, I.A.I.; 1 spec., Izvoarele (TL), 21.05.1997, H.C.; 1 spec., Muddy Volcanoes (Vulcanii Noroioși) (BZ), 7.04.2001, U.V.; 30 specs, Balauru hill, Beceni (BZ), 23.04.-4.05.2003, 12.05.2004, 16.04.-4.05.2005, U.V.; 6 specs, Vizireanu hill, Berca, Beceni (BZ), 16.04.-4.05.2005, U.V.; 1 spec., Cetățuia (GR), 28.04.2004, S.Me.

*Pedestredorcadion* sp.<sup>6</sup>

1 spec., Babadag (CT), 2.06.1958; 154 specs, Hagieni (CT), 4.06.1962, 29.05.1963, 6.06.1964, 15.05.1968, 15.05.1978, S.N., 1.05.1980, P.C., 25.05.1982, S.N., 6.05.1984, P.C.; 5 specs, Babadag (CT), 25.05.1975, S.N., 15 specs, Albești (CT), S.N.; 4 specs, Esehioi (CT), 11.05.1991, S.N.; 1 spec., Popina Island, Razelm (Razim) Lake (CT), 9.05.1992, R.N. (Fig. 2 C).

*Pedestredorcadion pedestre* (Poda, 1761)

4 specs, București, without other data, F.Ed., C.R.; 3 specs, Pasărea Forest, without other data; 1 spec., Comana Forest (GR), without other data, M.A.L.; 2 specs, Dobrogea, Măcin, Greci, without other data, M.A.L.; 3 specs, Băile Felix, Oradea (BH), 1911, V.E.; 1 spec., Arad, Ceala Forest (AR), 07.1932; 1 spec., Mireșu Mare (Nagynyires) (MM), 1942, V.E.; 1 spec., Sibiu (SB), 17.05.1946; 29 specs, Băile Herculane (CS), 1950, V.E., 19.05.1963, W.M., 10-20.05.1964, S.N., N.St., 27.05.1971, S.N.; 8 specs, Botoșani (BT), 17.05.1956, S.N.; 24 specs, Babadag Forest (TL), 30.06.1956, P.S.X., L.I., 20.06.1963, 19.05.1968, P.S.X., 25.05.1975, S.N.; 3 specs, Scheia Forest, Suceava (SV), 10-12.05.1959; 1 spec., Săbăreni (GR), 12.05.1959, R.A.; 2 specs, Podari (DJ), 12.06.1960; 87 specs, Esehioi (CT), 12.05.1961, 25.04.-17.05.1963, 27.04.1976, 29.04.1978, 12.06.1983, S.N.; 9 specs, southern Dobrogea (CT), 25.04.1963, 25.04.1967, S.N.; 2 specs, Brănești, Pustnicu Forest (IF), 8-12.05.1963, R.A.; 6 specs, Ineu, Arad, 21.06.1963, S.N.; 1 spec., Greci (TL), 22.06.1963, S.Ig.; 2 specs, Calopăr, Panaghia Forest, (DJ), 25.05.1963; 18 specs, Sinaia (PH), 26.06.1963, R.A., 29.X.1964, N.St.; 22 specs, Hagieni Forest (CT), 29.06.1963, S.N., 1.05.1980, P.C., 6.05.1984, P.C.; 1 spec., Gârla Mare (MH), 24.04.1964; 2 specs, Reșca, Dobrosloveni (OT), 15.05.1964, N.St.; 1 spec., Caracal (OT), 15.05.1964, N.St.; 4 specs, Periprava, Danube Delta (TL), 8.05.1964, S.Ig.; 1 spec., Cloșani (GJ), 28.07.1964, C.I.; 4 specs, Bresnița, Drobeta-Turnu Severin (CS), 6.05.1965, S.N.; 4 specs, Canaraua Feti (CT), 30.06.1965, N.St., 18-20.05.1993, P.A., H.C.; 3 specs, Băile Herculane (CS), Domogled Mt., 26.05.1966, N.St., 29.05.1984, B.V., 19.05.1985, B.V.; 1 spec., Eșelnița Valley (MH), 22.04.1967, D.D.; 1 spec., Șvinița (MH), 29.03.1968, N.St.; 4 specs, Nucet (DB), 15.06.1970, M.D., A.I.; 24 specs, Cocoș monastery (TL), 10.06.1973, C.A., 10.05.-14.05.1975, C.A.; 1 spec., Lipova (BC), 5.06.1976; 1 spec., Trascău Mts, Buru (CJ), 30.04.1980, A.G.; 1 spec., Metalici Mts, Poiana (HD), 2.07.1980, A.G.; 4 specs, Saru Forest, Balș (OT), 22.06.1981, A.G., 20.06.1982, D.M.; 1 spec., Strehaiia (MH), 15.05.1982, A.G.; 4 specs, Bâltanele (Prunișor) (MH), 16.05.1982, D.D.; 5 specs,

<sup>6</sup> *Pedestredorcadion* sp. near *divisum* – these specimens represent an undescribed species currently under study by Sama, Dascălu and Pesarini.

Radovan, Panaghia Forest (DJ), 13-15.06.1984, A.G., A.Mi.; 1 spec., Sihlea (VN), 23.06.1987, P.C.; 1 spec., Costești, Spătaru Forest (BZ), 24.06.1987, M.I.; 1 spec., Enisala, Danube Delta (TL), 27.06.1991, G.N.; 2 specs, Popina Island, Razelm (Razim) Lake, 9.05.1992, S.Mi.; 1 spec., Jurilovca, 6 Martie Forest (TL), 10.05.1992, S.Mi.; 2 specs, Dumbrăveni Forest (CT), 21.05.1994, A.G.; 1 spec., Bulgaria, Skorpilovici, 1.08.1994, P.S.M.; 2 specs, Dumbrăveni Forest, Furnica (CT), 14.05.1995, P.C.; 10 specs, Telița, Celic Dere (TL), 20-24.05.1997, P.C., S.R., H.C.; 1 spec., Revărsarea (TL), 23.05.1997, S.R.; 2 specs, Valea Beifului (CS), 16.05.2002, S.Me.; 9 specs, Vizireanu hill, Berca, Beceni (BZ), 4.05.2003, U.V.

*Pedestredorcadion pusillum* (Küster, 1847)

3 specs, Bârlad Valley (VS), without other data, M.A.L.; 1 spec., Mangalia (CT), without other data, M.A.L.; 19 specs, Lacul Sărat (BR), without other data, M.A.L., 22.05.1953, 28.05.1955, 8.06.1962, S.N.; 2 specs, Babadag Forest (TL), 1.06.1963, S.N.; 1 spec., Balta Albă (BZ), 21.05.1995, I.AI.

*Pedestredorcadion scopoli* (Herbst, 1784)

1 spec., without data, K.D.; 1 spec., Crăești (CJ), 04.1951; 1 spec., Timișoara (TM), 23.04.1954, C.I.; 1 spec., Tinca (BH), 24.05.1967, S.N.; 1 spec., Sibiu (SB), 14.04.1968, S.E.; 1 spec., București, Băneasa Forest, 3.05.1971, P.G.A.; 1 spec., Sfântu Gheorghe, Danube Delta (TL), 19.08.1971, S.N. (Fig. 2 D).

*Pedestredorcadion septemlineatum* (Waltl, 1838)

2 specs, Asia Minor, collecting data unknow, Ku.D.

*Pedestredorcadion tauricum* (Waltl, 1838)

4 specs, Mangalia (CT), without other data, M.A.L.; 1 spec., Lacul Sărat (BR), without other data, M.A.L.; 2 specs, București, without other data, M.A.L., 17.05.1991, P.S.M.; 1 spec., Vâlcea county, 1937; 3 specs, Bulgaria, Durostor county, 28.04.1938; 1 spec., Brânceni (TR), 1945; 4 specs, Comana Forest (GR), without other data, M.A.L., 17.05.1958, 24.06.1954, S.N.; 58 specs, Esecchio (CT), 17.05.1958, 12.05.-8.06.1961, 11-14.05.1963, 8.05.1966, 25.04.-14.05.1967, 11.05.1991, S.N.; 4 specs, southern Dobrogea (CT), 27.04.1963, S.N.; 12 specs, Brănești, Pasărea Forest (IF), 24.06.1952, P.S.X., 30.04.1953, S.N., 8.05.1963, P.G.A., P.S.X., 24.04.-7.05.1964, S.N., P.S.X.; 1 spec., Valu lui Traian (CT), 22.05.1955; 1 spec., București, Botanical Garden, 15.05.1963; 1 spec., Calopăr, Dâlga Forest (DJ), 5.06.1963, N.St.; 1 spec., Tecuci (GL), 5.06.1954, S.N.; 2 specs, Babadag Forest (TL), 23.06.1955, 25.05.1975, S.N.; 8 specs, Iortmac Lake (CT), 24.04.1963, S.N.; 4 specs, Băile Herculane (CS), 19.05.1963, W.M., 10-18.05.1964, S.N.; 11 specs, Hagieni Forest (CT), 28-29.06.1963, 6.06.1965, S.N., 1.05.1980, 6.05.1984, P.C., 22.05.1993, H.C.; 22 specs, Canarua Fetii (CT), 19.06.1960, 25.04.-25.05.1982, S.N., 18-20.05.1993, P.C., P.A., H.C., A.M., 20.05.1994, A.G.; 1 spec., Nanov Forest (TR), 14.05.1980, M.I.; 1 spec., Strehăia (MH), 14.05.1982, A.G.; 3 specs, Băltanele (MH), 16.05.1982, D.D.; 3 specs, Vasilați (CL), 18.05.1988, S.R.; 8 specs, Vidra (IF), 11.05.1989, P.G.A.; 5 specs, Dumbrăveni Forest (CT), 21.05.1994, A.G., P.A., 14.05.1995, P.C.; 5 specs, Negureni Forest (CT), 24.04.-15.05.1994, H.C., A.G.; 1 spec., Florești (GR), 12.06.1994, P.C.; 1 spec., Telița, Celic Dere (TL), 20.05.1997, P.C.; 1 spec., Valea Teilor (TL), 22.05.1997, P.C.



## Tribe Lamiini

*Herophila* Mulsant, 1862*Herophila tristis* (Linnaeus, 1767)

1 spec., Italy, Trieste, without other data; 2 specs, Băile Herculane (CS), 06.1928, 19.05.1934, S.N. (Fig. 3 C).

*Lamia* Fabricius, 1775*Lamia textor* (Linnaeus, 1758)

1 spec., France, Besançon, without other data, M.A.L.; 1 spec., France, Mello (Oise), without other data, M.A.L.; 2 specs, Azuga (PH), without other data, F.Ed.; 2 specs, Hațeg (HD), without other data, K.D.; 1 spec., Agăș (BC), 8.06.1908; 1 spec., Băile Felix, Oradea (BH), 1911, V.E.; 5 specs, Băile Herculane (CS), 1950, V.E., 12.06.1953, 19.06.1956, 21.06.1959, 2.07.1960, S.N.; 1 spec., Pitești (AG), 06.1951, S.N.; 1 spec., Timișoara (TM), 20.06.1951, S.N.; 1 spec., București, Buda, 12.07.1957, R.A.; 1 spec., Sighetu Marmăției (MM), 27.06.1954, S.N.; 1 spec., Rucăr (AG), 06.1957, T.N.; 1 spec., Suceava (SV), 15.05.1959, S.N.; 2 specs, Ieșelnița Valley (MH), 3.06.1961, P.S.X.; 1 spec., Greșu, Focșani (VN), 21.07.1962, P.S.X.; 1 spec., Craiova (DJ), 5.06.1964, N.St.; 1 spec., Gândiți (?), 3.05.1966, S.N.; 1 spec., Spain, Zaragoza, La Alfranca Pastaiz, 7.05.1977, G.C.; 1 spec., Gura Văii (MH), 29.07.1979, S.N.; 1 spec., Strehaiia (MH), 12.05.1982, S.R.; 1 spec., Târgu Cărbunești (GJ), 13.07.1984, S.R.; 1 spec., Galeș (AG), 25.05.1986, P.C.; 1 spec., Podu Dâmbovița (AG), 15.05.1990, A.Mi.; 3 specs, Muddy Volcanoes (Vulcanii Noroioși) (BZ), 1.05.2000, 15.06.2002, U.V.; 2 specs, ostrovul (island) Chichinete, Danube (MH), 12.05.2004, S.Mi.; 1 spec., Petroșani (GR), 28.06.2004, S.Me.; 1 spec., Arbănași, Beceni (BZ), 25.07.2005, U.V.; 1 spec., Cornetu (IF), 10.06.2006, C.G.

*Morimus* Brullé, 1832*Morimus asper asper* (Sulzer, 1776)

1 spec., France, Lyon, without other data, M.A.L.; 2 specs, Croatia, Istria, Pola, 1936; 1 spec., France, Provence Lucéram, Forêt de Turini, 5.08.1959, B.P.; 1 spec., France, Lanoux, Adrech, 21.07.1963, B.P.; 2 specs, France, Pyrénées Orientales, Forêt dela Massane, 07.1966, R.J.; 1 spec., France, Cipières, Bords du Loup, 14.06.1974, B.J.

*Morimus asper funereus* Mulsant, 1863

1 spec., Dolj county, 19.07.1937; 5 specs, Pitești (AG), 28.04.1950, 28.04.1951, S.N.; 1 spec., Periș (IF), 4.05.1950; 4 specs, Bârnova (IS), 21.05.1950, S.N.; 18 specs, Băile Herculane (CS), 1950, V.E., 1.06.1959, P.G.A., 1.07.-4.09.1960, S.N., 1.06.1962, P.G.A., 23.06.1963, 4.07.1964, 22.05.-12.07.1965, S.N., 26.05.-1.06.1966, P.G.A., 24.06.1970, R.A., 8.06.1977, S.N.; 3 specs, București, Băneasa Forest, 20.04.1951, P.G.A., 4.06.1959, S.N.; 13 specs, Comana Forest (GR), 25.05.1951, P.G.A., 12.06.1956, 30.05.1959, S.N., 9.06.-5.07.1963, R.A., S.N., 22.05.1971, S.N., 14.05.1995, P.S.M., 26.04.1998, P.S.M., 5.04.2005, C.G., 19.05.2009, P.A., P.I.; 41 specs, Moldova Nouă (CS), 23.05.1953, 10.05.1976, S.N.; 1 spec., southern Dobrogea (CT), 20.06.1956, S.N.; 5 specs, Brănești, Pasărea Forest (IF), 6.06.1959, 9.07.1970, S.N.; 1 spec., Craiova (DJ), 30.05.1960; 2 specs, Căldărușani, Brazi (IF), 21.06.1960, R.A.; 1 spec., Babadag Forest (TL),

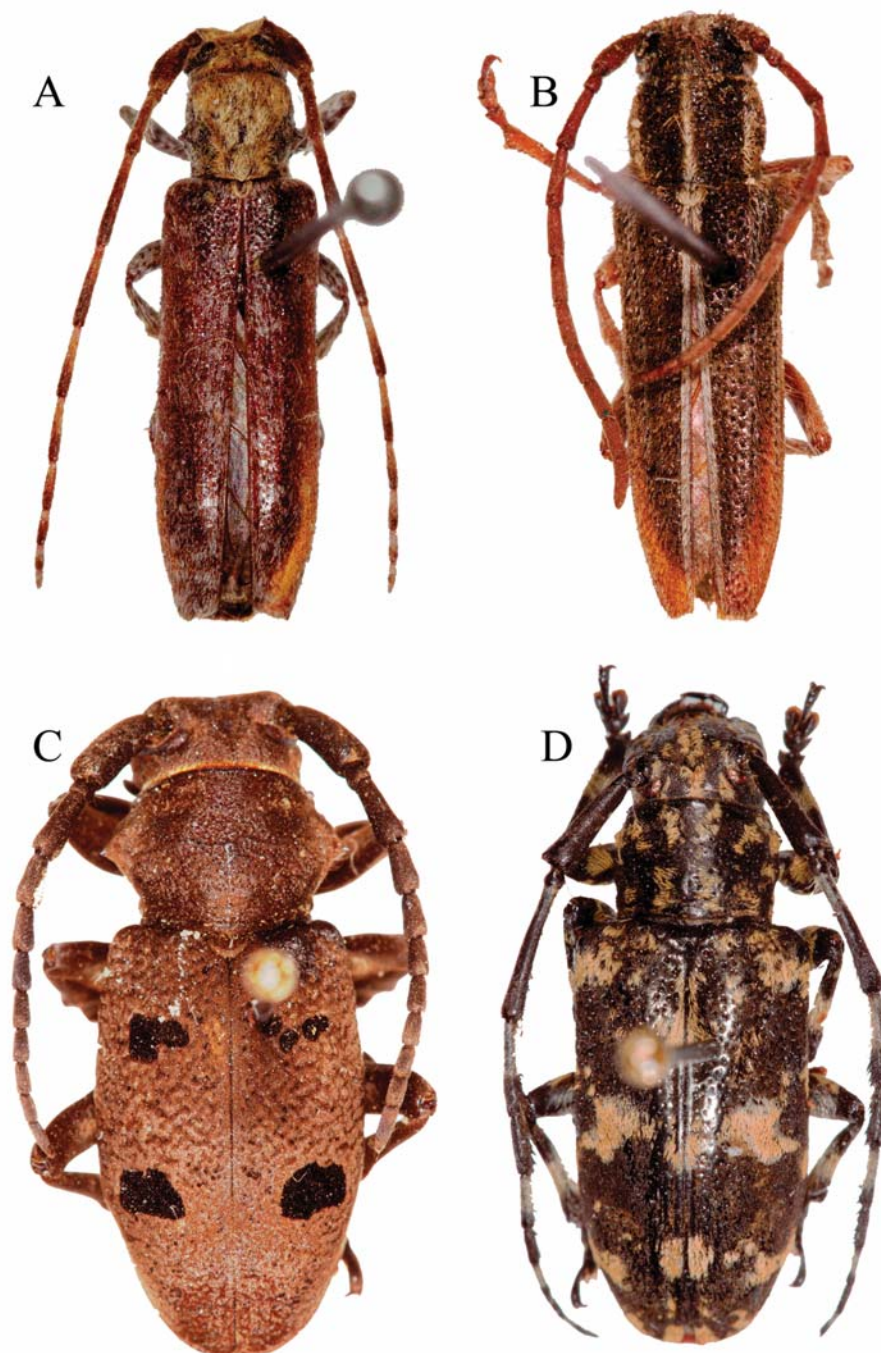


Fig. 3 - A, *Deroplia genei*; B, *Coptosia* sp.; C, *Herophila tristis*; D, *Mesosa longipennis*.  
(Photos: I. Șt. Iorgu)

22.06.1962, P.G.A.; 1 spec., Bârlad (VS), 22.08.1963, R.A.; 1 spec., Caracal, Reșca-Romula (OT), 15.05.1964, N.St.; 4 specs, Canaraua Fetei (CT), 16-19.07.1964, W.M., S.N., 30.05.1965, N.St., 14.07.1966, S.N.; 1 spec., Țigănești, Ciolpani (IF), 26.04.1966, R.A.; 1 spec., Danube Gorges (Cazanele Dunării) (MH), 20.05.1966, N.St.; 5 specs, Ieșelnița (MH), 3.06.1966, P.G.A., 7.06.1967, N.St., 14.05.1968; 1 spec., Orșova (MH), 2.04.1966, N.St.; 1 spec., Locva Mts, Lacul Dracului (CS), 26.07.1966, B.M.; 1 spec., Păltiniș, (Cibin) Mts (SB), 2.07.1966, S.N.; 2 specs, Baia Nouă, Danube Gorges (Cazanele Dunării) (MH), 4.08.1967, N.St.; 1 spec., Grațca, Orșova (MH), 27.04.1968, N.St.; 4 specs, Mraconia Valley, Dubova (MH), 24.05.1970, S.N.; 6 specs, Ghelmeșioaia (MH), 1.06.1971, 2.06.1972, S.N.; 51 specs, Moldova Nouă (CS), 26-28.05.1971, 24.05-4.06.1973, 27.05.1975, 06.1976, S.N.; 6 specs, Cocoș monastery (TL), 13.05.-4.07.1975, C.A., 24.05.2005, S.R.; 1 spec., Cladova (AR), 10.06.1976; 1 spec., Gura Văii (MH), 4.07.1978, S.N.; 2 specs, Dealu, Căscioarele Forest (IF), 7-8.06.1979, S.R.; 1 spec., Corbii Mari, Pintenoaia Forest (IF), 21.06.1979, L.D.; 2 specs, Ciucurova (TL), 19.06.1981, S.N., 22.05.1997, D.M.; 3 specs, Snagov Forest (IF), 12.07.1991, Ș.I.; 2 specs, București, 20.08.1991, P.S.M., 8.05.1995, P.S.M.; 4 specs, Jurilovca, 6 Martie Forest (TL), 10.05.1992, N.R.; 2 specs, Lupșa Valley, Motru Sec (GJ), 18.06.1992, S.R.; 1 spec., Cloșani (GJ), 18.06.1992, P.C.; 1 spec., Sohodol Gorges (Cheile Sohodolului) (GJ), 21.06.1992, P.C.; 1 spec., Slava Rusă (TL), 22.06.1993, S.Mi.; 2 specs, Cernica Forest (IF), 7-9.07.1995, P.S.M., I.Al.; 3 specs, Teștița, Celic Dere (TL), 20-24.05.1997, P.C.; 7 specs, Unguriu, Măgura (BZ), 11.05.-18.08.2003, 19.07.2004, 24.04.2006, 28.04.2007, U.V.; 1 spec., Arbănași, Beceni (BZ), 25.07.2005, U.V.; 1 spec., Valea Bratcului (GJ), 6.06.2004, R.N.; 1 spec., Schitu Locurele (GJ), 8.07.2004, B.C.; 1 spec., Târnița (GJ), 9.07.2004, P.A.; 5 specs, Valea Fagilor, Luncavița (TL), 24.05.2005, S.R.; 1 spec., Sasca Montană, Valea Bei f.h. (CS), 10.08.2005, P.E.

#### Tribe Mesosini

##### *Mesosa* Latreille, 1829

##### *Mesosa curculionoides* (Linnaeus, 1761)

2 specs, France, Besançon, without other data, M.A.L.; 1 spec., Titu (DB), without other data; 1 spec., Băile Felix, Oradea (BH), 1911, V.E.; 34 specs, Comana Forest (GR), without other data, M.A.L., 25.06.1935, P.G.A., 14.05.-9.07.1955, 12.07.1956, 4-16.06.1959, 15.05.1973, S.N.; 14.07.1989, B.A., 3.05.1997, P.S.M.; 2 specs, București, Băneasa Forest, 05.1952, S.N.; 2 specs, Babadag Forest (TL), 23.06.1955, S.N.; 1 spec., Snagov (IF), 25.04.1957, R.A.; 1 spec., Mogoșoaia (IF), 4.06.1957, S.Ig.; 1 spec., Căldărușani (IF), 12.06.1958, R.A.; 1 spec., Pitești (AG), 2.06.1960, S.N.; 1 spec., Vidra (VN), 13.09.1960, R.A.; 2 specs, Letea Forest, Danube Delta (TL), 11.05.1964, P.S.X.; 2 specs, C. A. Rosetti, Danube Delta (TL), 11.06.1964, P.S.X.; 2 specs., Orșova (MH), 2.04.1966, N.St.; 2 specs, Băile Herculane (CS), 25.06.1963, 15.06.1968, S.N.; 4 specs, Moldova Nouă (CS), 24.05.-1.06.1973, S.N.; 1 spec., Sulina (TL), 14.06.1974, S.N.; 1 spec., Târnaveni (MS), 28.05.1998, I.P.; 1 spec., Unguriu, Măgura (BZ), 3.07.2003, U.V.; 1 spec., ostrovul Mocanu (island), Danube (GR), 21.06.2004, P.C.; 2 specs, Valea Fagilor, Luncavița (TL), 24.05.2005, S.R.

*Mesosa longipennis* Bates, 1873

1 spec., Japan, Okinawa, Omoto Mt., 20.06.1971, O.S.; 1 spec., Japan, Okinawa, Ganpira, 9.07.1971, O.S.; 1 spec., Japan, Okinawa, Banna Mt., 15.07.1971, O.S. (Fig. 3 D).

*Mesosa nebulosa* (Fabricius, 1781)

1 spec., Burgberg (Vurpâr) (AB), without other data; 2 specs, Azuga (PH), without other data, F.Ed.; 1 spec., Kronstädter Gebirge (Braşov Mts) (BV), without other data, D.Fr.; 1 spec., Kapelenberg (Tâmpa, Braşov), without other data, D.Fr.; 1 spec., Bârlad Valley (VS), without other data, M.A.L.; 1 spec., Predeal (BV), without other data, M.A.L.; 5 specs, Comana Forest (GR), without other data, M.A.L.; 4 specs, Bucureşti, Băneasa Forest, 19.04.1951, 10.05.1952, 4.05.1956, S.N.; 7 specs, Băile Herculane (CS), 12.07.1953, 29.05.-19.07.1956, 2.07.1967, 25.05.1971, S.N.; 2 specs, Comana Forest (GR), 24.06.1954, S.N.; 1 spec., Haţeg Mts, 23.07.1955, S.N.; 1 spec., southern Dobrogea (CT), 25.07.1955, S.N.; 1 spec., Vrata (MH), 06.1956, S.N.; 1 spec., Daneţi, Gura Jiului (DJ), 14.06.1956, R.I.V.; 1 spec., Babadag Forest (TL), 30.06.1956, P.S.X.; 1 spec., Rucăr (AG), 06.1957, N.T.; 3 specs, Craiova (DJ), 30.05.1960; 1 spec., Dumbrăveni Forest (CT), 23.05.1965, S.N.; 1 spec., Bucureşti, 25.07.1967, R.A.; 3 specs, Moldova Nouă (CS), 25.05.1971, S.N.; 1 spec., France, Aiguines, Forêt de Margés, 5.06.1974, B.P.; 1 spec., Luncaviţa (TL), 20.05.1996, P.S.M.; 1 spec., Muddy Volcanoes (Vulcanii Noroioşi) (BZ), 15.06.2002, U.V.; 1 spec., Unguriu, Măgura (BZ), 03.07.2003, U.V.

*Monochamus* Dejean, 1821*Monochamus galloprovincialis galloprovincialis* (Olivier, 1795)

2 specs, France (Gallia, Landes), without other data, K.D.

*Monochamus galloprovincialis pistor* (Germar, 1818)

1 spec., Băile Herculane (CS), 30.07.1951, S.N.

*Monochamus saltuarius* (Gebler, 1830)

3 specs, Retezat Mts, Gura Apei, 28.07.1956, S.N.

*Monochamus sartor* (Fabricius, 1787)

1 spec., Broşteni, Carpathian Mts (SV), without other data, M.A.L.; 1 spec., Poiana Țapului (PH), without data; 1 spec., Schuler Gebirge (Postăvaru Mt.), Braşov, without other data, D.Fr.; 1 spec., Băile Tuşnad, Ciuc Depression (HR), without other data, D.Fr.; 1 spec., Frecker Gebirge (Făgăraş Mts), Bârcaciu, 06.1924; 1 spec., Hohe Rinne (Păltiniş), Cibin Mts (Zibin Gebirge) (SB), without other data, W.E.; 1 spec., Retezat Mts, 11.06.1946; 1 spec., Slănic Moldova, Nemira Mts (BC), 06.1949; 1 spec., Bucegi Mts, Padina, 12.07.1951, S.N.; 2 specs, Rodnei Mts, Pietrosu Peak (MM), 26.07.1953, S.N.; 2 specs, Rarău Mts, 28.07.1953, S.N.; 2 specs, Retezat Mts, Gura Zlata, 9.08.1955, S.N.; 1 spec., Vatra Dornei, Dorna Depression (SV), 09.1955; 2 specs, Retezat Mts, Gura Apei, 28.07.1956, S.N.; 1 spec., Căliman Mts, Răstolniţa, 28.08.1956, S.N.; 4 specs, Făgăraş Mts, Negoiu chalet, 28.07.1957, S.N.; 9 specs, Făgăraş Mts, Capra Peak, 28.07.-4.08.1957, 15.09.1959, S.N.; 6 specs, Făgăraş Mts, Suru chalet, 7.08.1957, S.N.; 1 spec., Comăneşti, Bacău, 1.09.1970; 4 specs, Lotariţa Mts, Voineasa, Lotru Valley

(VL), 1.08.1996, P.S.M.; 2 specs, Gurghiu Mts, Valea Sălardului (MS), 3.08.1999, I.P.; 1 spec., Apuseni Mts, Glăvoiu cave (BH), without other data; 1 spec., Predeal (BV), 6.07.2004, U.V.; 1 spec., Săpânța, Colibi f.h. (MM), 6.07.1996, H.C.; 1 spec., Lerești (AG), 19.07.2003, S.M.; 12 specs, Valley of the Rica River, 3 km upstream Poienile de sub Munte (MM), 14.VI.2003, S.R., P.C.; 19 specs, Valley of the Repedea River, 500 m upstream Repedea f.h. (MM), 18.06.2003, S.R., S.Mi., S.Me.; 2 specs, Țibleș Mts, Săliște, Valley of the Idișor streamlet (MM), 23.VI.2003, S.R.; 1 spec., Făgăraș Mts, Vidraru Lake, Cumpăna chalet (AG), 3.08.2004, S.R.; 2 specs, Făgăraș Mts, Vidraru Lake, 7.08.2004, M.D.; 92 specs, Maramureș Mts, Valley of the Vaser River, Făina, 21-22.07.2004, S.R., C.G., B.C.

*Monochamus sutor* (Linnaeus, 1758)

1 spec., Suisse, Travers, without other data, M.A.L.; 1 spec., Făgăraș Mts (Frecker Gebirge), Bârcaciu, 06.1924; 1 spec., Bucegi Mts, Tătaru, 4.08.1949; 21 specs, Făgăraș Mts, Capra Peak, 20.08.1950, 28.07.-4.08.1957, 17.08.1959, S.N.; 2 specs, Bucegi Mts, Bolboci chalet, 12.07.1953, S.N.; 1 spec., Rarău Mts, Izvorul Alb, 19.08.1955, S.N.; 4 specs, Retezat Mts, Gura Zlata, 9.08.1955, 25.07.1956, S.N.; 3 specs, Retezat Mts, Gura Apei, 28.07.-9.08.1956, S.N., 8.08.1976, P.C.; 9 specs, Făgăraș Mts, Otic Peak, 16.08.1959, S.N.; 1 spec., Parâng Mts, Rânca, 17.07.1964; 1 spec., Maramureș Mts, Valley of the Vaser River, 20.08.1982, Ig.A.; 1 spec., Sâmbăta de Sus (SB), 23.08.1980; 2 specs, Gurghiu Mts, 10.07.1994, M.B.P.; 2 specs, Lerești, Valea Ursului, 800 m (AG), 14.08.1997, 22.07.2003, S.M.; 1 spec., Cernica (IF), 9.07.1995, I.A1.; 13 specs, the confluence of the Rica and the Budescu rivers, Poienile de sub Munte (MM), 14.06.2003, S.R., P.C.; 12 specs, Valley of the Rica River, Poienile de sub Munte (MM), 14.06.2003, S.R., S.Mi.; 5 specs, Valley of the Repedea River, 500 m upstream Repedea f.h. (MM), 18.06.2003, S.R.; 170 specs, Maramureș Mts, Valley of the Vaser River, Făina, 19.06.2006, S.R., 21-22.07.2004, S.R., C.G., B.C.

Tribe Obereini

*Oberea* Dejean, 1835

*Oberea erythrocephala* (Schrank, 1776)

3 specs, Transylvania, without other data, K.D.; 4 specs, Hațeg (HD), without other data, K.D.; 2 specs, without data, F.Ed.; 1 spec., Băile Govora (VL), without other data, F.Ed.; 2 specs, Austria, Umgebungen Graz, without other data, P.K.A.; 2 specs, Comana Forest (GR), without other data, M.A.L., F.Ed.; 1 spec., Valu lui Traian (CT), 05.1950; 14 specs, Brănești, Pasărea Forest (IF), 5.07.1952, 2-19.06.1959, S.N.; 2 specs, Budești (CL), 11.06.1956, 2.06.1964, S.N.; 4 specs, Canaraua Feti (CT), 29.06.1956, 27.05.1962, S.N., 29.06.1964, N.St., 18.07.1967, S.N.; 10 specs, Sfântu Gheorghe, Delta Danube (TL), 17.06.1958, S.N.; 1 spec., Hărman (BV), 8.06.1963; 11 specs, Agigea (CT), 27-30.05.1963, P.S.X., P.G.A., S.N., 15-17.06.1964, P.S.X., P.G.A., 4.07.1965, N.St.; 1 spec., Hagieni Forest (CT), 28.05.1963, S.N.; 1 spec., C. A. Rosetti, Danube Delta (TL), 27.05.1981, P.S.X.; 1 spec., Sihlea (VN), 23.06.1987, M.I.; 3 specs, southern Dobrogea (CT), 28.06.1987,

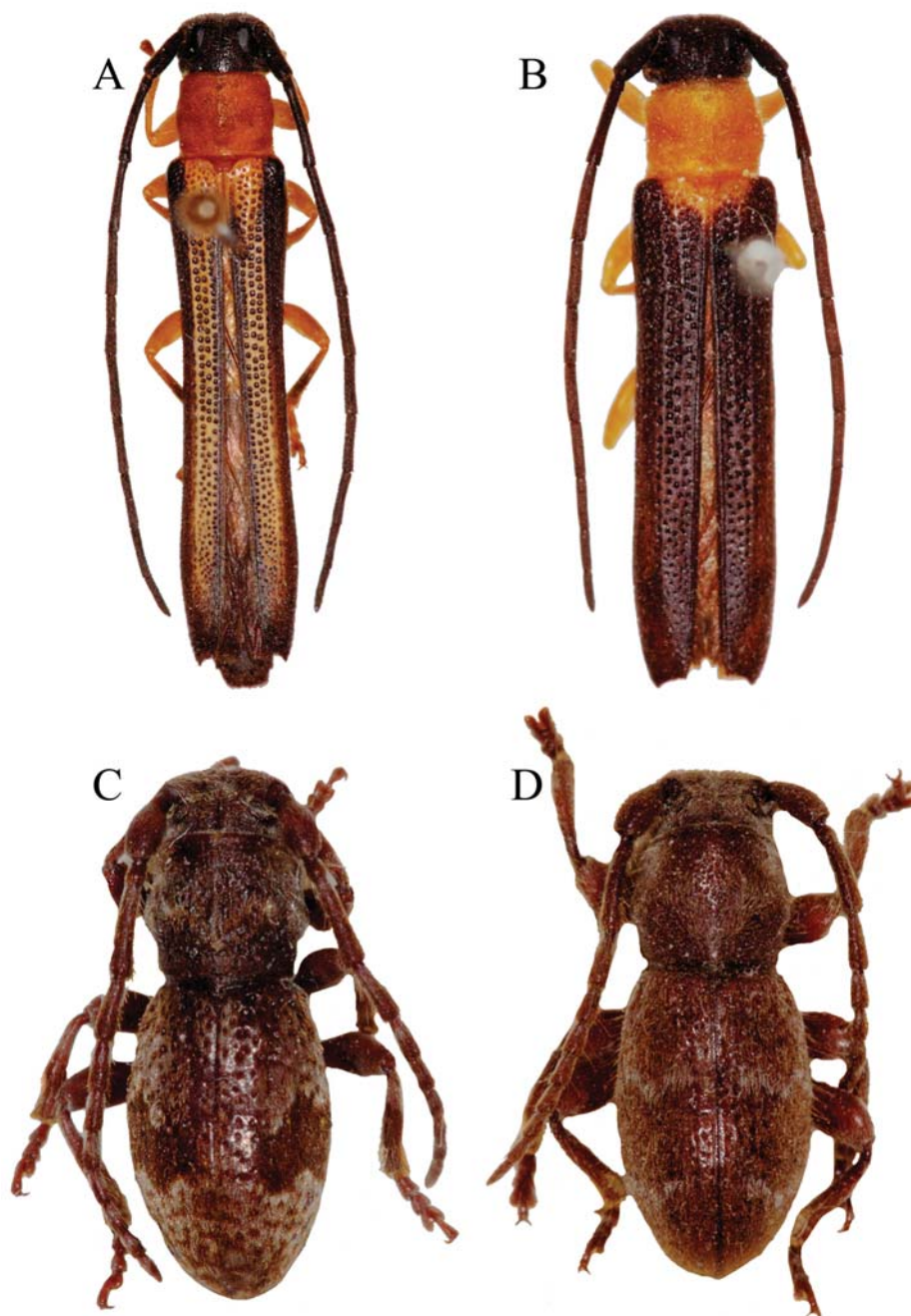


Fig. 4 - A, *Oberea mixta*; B, *Oberea pedemontana*; C, *Parmena balteus*; D, *Parmena bicincta*.  
(Photos: I. Șt. Iorgu)

S.N.; 3 specs, Popina Island, Razelm (Razim) Lake, 8.06.1994, H.C.; 1 spec., Aleșd (BH), 27.06.1994, S.Au.

*Oberea euphorbiae* (Germar, 1813)

1 spec., Târgu Jiu (GJ), 18.06.1954; 11 specs, Buhaz sand level, Delta Danube (TL), 17.06.1958, S.N.; 29 specs, Periprava, Danube Delta (TL), 23.06.-11.07.1962, D.I., S.N., 29-30.06.1963, P.S.X., P.G.A., D.I., 2.07.1963, P.S.X., 13.05.1964, W.M., P.S.X., N.St.; 1 spec., Agigea (CT), 17.06.1964, P.G.A.; 23 specs, Caraorman, Danube Delta (TL), 7-12.05.1967, P.S.X., D.I., W.M., P.G.A., 11.05.1968, P.G.A., 13.06.1984, P.S.X., 24.06.1991, Gh.P., 15.05.1992, G.N.; 1 spec., Letea Forest, Danube Delta (TL), 15.06.1970, S.N.; 7 specs, Sfântu Gheorghe, Delta Danube (TL), 24.06.1982, 5.07.1983, S.N.; 2 specs, Băile Herculane (CS), 28.06.1986, S.N.; 1 spec., Maliuc, Mila 26 (TL), 18.05.1992, G.N.; 1 spec., Dunavăț, Danube Delta (TL), 9.06.1994, H.C.; 3 specs, Cetățuia (GR), 26.04.2004, S.Me.; 2 specs, Malu (GR), 27.04.2004, P.C.

*Oberea linearis* (Linnaeus, 1761)

1 spec., without data, F.Ed.; 1 spec., France, Besançon, without other data, M.A.L.; 1 spec., Republic of Moldova, Cernăuți (Czernowitz), without other data; 1 spec., București, Băneasa Forest, 15.07.1959, S.N.

*Oberea mixta* Bates, 1873

8 specs, Japan, Chichibu, Saitama, 14.06.1971, O.S. (Fig. 4 A).

*Oberea oculata* (Linnaeus, 1758)

1 spec., București, without other data, M.A.L.; 1 spec., France, Besançon, without other data, M.A.L.; 1 spec., Azuga (PH), without other data, F.Ed.; 5 specs, Bran (Torzburg) (BV), without other data, C.R.; 1 spec., Moinești (BC), without other data, C.R.; 1 spec., Băile Felix, Oradea (BH), 1911, V.E.; 1 spec., Retezat Mts, Gura Zlata, 2.08.1934; 1 spec., Dărăști (IF), 06.1949; 1 spec., București, Roșu, 24.08.1953, P.G.A.; 1 spec., Roșu Lake (Lacul Roșu), Hășmașu Mare Mts (HG), 24.08.1953, P.G.A.; 3 specs, Mangalia, Comarova Forest (CT), 1.07.1955, S.N.; 2 specs, Băile Herculane (CS), 15.07.1955, 2.07.1957, S.N.; 1 spec., Retezat Mts, 19.08.1958, S.N.; 8 specs, Pitești (AG), 2.08.1957, 2.07.1959, 2.07.1962, S.N.; 12 specs, Ciovârșani (MH), 24-27.06.1961, S.N.; 1 spec., Periprava, Danube Delta (TL), 29.06.1962, S.N.; 1 spec., Eșelnița (MH), 30.05.1968, P.S.X.; 2 specs, Budești (CL), 25.05.-5.06.1979, W.M., D.I.; 1 spec., Nanov Forest (TR), 26.06.1980, D.I.; 1 spec., Sfântu Gheorghe, Delta Danube (TL), 5.07.1983, S.N.; 1 spec., Târgu Cărbunești (GJ), 12.07.1984, M.I.; 1 spec., Călinești Oaș (SM), 31.07.1985, G.V.; 1 spec., Cărligătura Valley, 17 km upstream Repedea (MM), 27.06.1998, P.C.; 1 spec., Tataru dam on the Mara River, Ocna Șugatag (MM), 16.07.1998, P.S.M.; 1 spec., Buzău Mts, Harțagu, Nehoiașu f.h., 16.08.2002, U.V.

*Oberea pedemontana* Chevrolat, 1856

2 specs, București, Băneasa Forest, 15.07.1959, 18.06.1960, S.N.; 8 specs, Șelimbăr (SB), 15.06.1961, 4.06.1962, S.N.; 3 specs, Murfatlar (CT), 12.06.1961, S.N.; 4 specs, Hagieni Forest (CT), 4-5.06.1962, S.N., 20.06.1964, D.I. (Fig. 4 B).

*Oberea pupillata* (Gyllenhal, 1817)

2 specs, without data, C.R.; 1 spec., Retezat Mts, 11.06.1946.

## Tribe Parmenini

*Parmena* Dejean, 1821*Parmena balteus* (Linnaeus, 1767)

4 specs, France, without other data, M.A.L.; 2 specs, France, Saint Vallier, Pt. De Danadiou, 19.05.1973, B.P.; 2 specs, France, Alpes Maritimes, Cipières, Le Plan, 8.06.1974, B.P.; 1 spec., France, Var, Le Muy, 12.06.1974, B.P. (Fig. 4 C).

*Parmena bicincta* Küster, 1849

3 specs, Croatia, Dalmatia, Lesina, without other data (Fig. 4 D).

*Parmena pubescens* (Dalman, 1817)

1 spec., Italy, Sicily, without other data.

*Parmena solieri* Mulsant, 1839

1 spec., France (Gallia), without other data, K.D.; 2 specs, Italy, Sicily, la provincia di Palermo, Piana degli Albanesi, 6.XII.1975, B.S.

*Parmena unifasciata* (Rossi, 1790)

1 spec., Băile Herculane (CS), 13.05.1960, S.N.

## Tribe Phytoeciini

*Cardoria* Mulsant, 1862*Cardoria scutellata* (Fabricius, 1792)

1 spec., Hagieni Forest (CT), 29.05.1963, S.N. (Fig. 5 A).

*Coptosia* Fairmaire, 1864*Coptosia* sp.

1 spec., Valu lui Traian (CT), 3.06.1957, S.N. (Fig. 3 B).

*Opsilia* Mulsant, 1862*Opsilia coerulescens* (Scopoli, 1763)

5 specs, Transylvania, without other data, K.D.; 1 spec., Lotru Valley (VL), without other data, D.Fr.; 2 specs, Comana Forest (GR), without other data, M.A.L.; 1 spec., Bârlad Valley (SV), without other data, M.A.L.; 2 specs, Ploiești (PH), 9-10.06.1953; 1 spec., Bârsești (GJ), 22.06.1954, R.I.V.; 1 spec., Mangalia, Comarova Forest (CT), 1 07.1955, S.N.; 5 specs, Canaraua Fetii (CT), 22.07.1955, 27.05.1962, 18.07.1967, S.N.; 1 spec., Greci (TL), 26.05.1956, P.S.X.; 1 spec., Ocolna (DJ), 12.06.1956, R.I.V.; 1 spec., Potelu (OT), 13.06.1956, R.I.V.; 2 specs, southern Dobrogea (CT), 5.06.1959, S.N.; 22 specs, Brănești, Pasărea Forest (IF), 2-22.06.1959, S.N., 8.06.1964, D.I.; 1 spec., Bozovici (CS), 6.06.1962, D.I.; 9 specs, Agigea (CT), 28-29.05.1962, P.G.A., 19-20.06.1962, R.A., 15-17.06.1964, P.S.X., P.G.A., 16.05.2006, P.E.; 4 specs, Hagieni Forest (CT), 7.06.1963, P.G.A., 5-7.06.1965, S.N.; 4 specs, Ieșelnița (MH), 14-17.05.1969, P.G.A., W.M., 3.06.1968, P.S.X., 20.06.1970, R.A.; 3 specs, Ghelmegioaia (MH), 2.06.1971, S.N.; 1 spec.,



France, Aiguines, Forêt de Margés, 5.06.1974, B.P.; 1 spec., Clisura Dunării, Oreva (CS), 23.05.1976, S.N.; 1 spec., Băile Herculane (CS), 10.07.1977, S.N.; 3 specs, Esecchio (CT), 29.04.1978, S.N.; 3 specs, Greece, Athens, 16.04.1978, 19-24.04.1979, M.I.; 5 specs, Moara Vlăsiei (IF), 10.06.1978, S.R., A.G.; 1 spec., Budești (CL), 25.05.1979, W.M.; 1 spec., Padeș (GJ), 16.06.1992, S.R.; 1 spec., Slava Rusă, Babadag (TL), 22.06.1993, M.I.; 2 specs, Trăiseni, Valley of the Doftana River (PH), 26.06.1994, P.C.; 1 spec., Celic Dere monastery (TL), 20.05.1997, H.C.; 1 spec., Valley of the Bistra River (MM), 28.06.1997, M.I.; 1 spec., Tunisia, Bulla Regia, 28.03.2006, C.P. („Punia” Expedition); 1 spec., Morocco, Merja Zerga, 12.04.2007, C.P. („Atlas” Expedition); 4 specs, Morocco, Tioumliline, 28.04.2007, C.P. („Atlas” Expedition); 1 spec., Morocco, Volubilis, 29.04.2007, P.B.M. („Atlas” Expedition); 1 spec., Morocco, Mouley Idriss, 1.05.2007, C.P. („Atlas” Expedition).

*Opsilia molybdaena* (Dalman, 1817)

1 spec., Morocco, Cherrat, Oued Bouznika, 15.04.2007, C.S. („Atlas” Expedition); 2 specs, Morocco, Volubilis, 29.04.2007, C.P. („Atlas” Expedition); 1 spec., Morocco, Jmalha, 5.05.2007, C.P. („Atlas” Expedition).

*Oxyilia Mulsant*, 1862

*Oxyilia duponchelii* (Brullé, 1832)

1 spec., Greece, without other data (Fig. 5 B).

*Phytoecia* Dejean, 1835

*Phytoecia (Helladia) adelpha* (Ganglbauer, 1884)

2 specs, Turkey, Issos Erzin, Hatay, 8.05.1998, P.S.M., I.AI.

*Phytoecia (Helladia) humeralis* (Waltl, 1838)

1 spec., Greece, Crete, 1.05.2004, P.S.M.

*Phytoecia (Helladia) praetextata* (Steven, 1817)

14 specs, Esecchio (CT), 9.05.1958, 9.06.1961, 9-14.05.1963, 25.04.1963, S.N. (Fig. 5 D).

*Phytoecia (Musaria) affinis* (Harrer, 1784)

(= *Phytoecia nigripes* Voet, 1778)

1 spec., Kronstädter Gebirge (Brașov Mts) (BV), without other data, D.Fr.; 2 specs, Almaș (AR), 1.07.1907; 1 spec., Căpâlnaș (AR), 8.05.1940, S.N.; 3 specs, Bârnova (IS), 13.06.1965, S.N.; 1 spec., Valea Beiului, Beușnița waterfall (CS), 14.05.2002, S.Me.

*Phytoecia (Musaria) argus* (Froelich, 1793)

1 spec., Kronstädter Gebirge (Brașov Mts) (BV), without other data, D.Fr.; 1 spec., Valea lui David (IS), 10.06.1984, P.G.A.

*Phytoecia (Phytoecia) caerulea* (Scopoli, 1772)

1 spec., without data, K.D.; 1 spec., București, Filaret, without other data, F.Ed.; 9 specs, Măcin (TL), without other data, M.A.L., F.Ed., 23.05.1961; 1 spec., Babadag Forest (TL), without other data, F.Ed.; 1 spec., Dobrogea, without other data, F.Ed.;

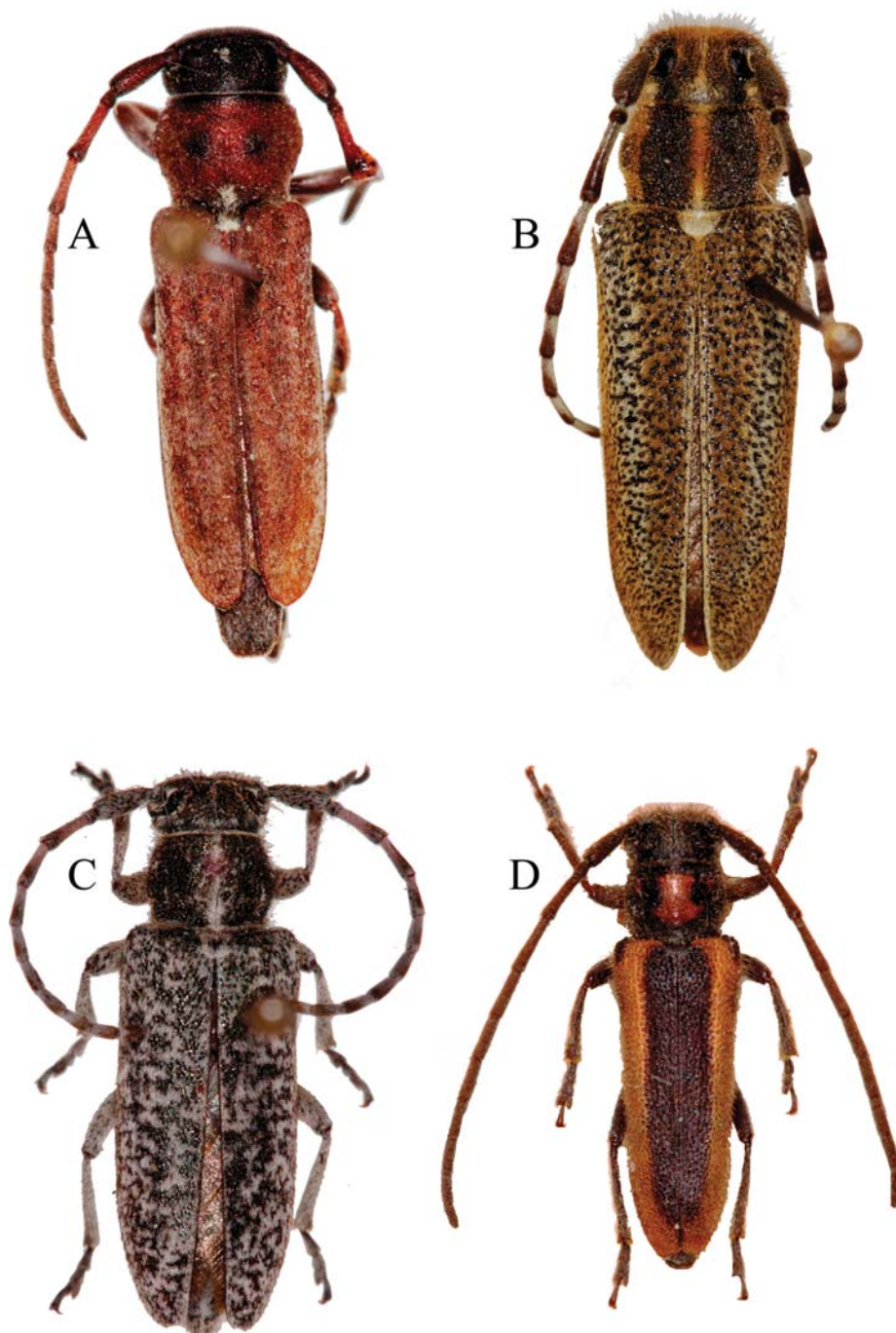


Fig. 5 - A, *Cardoria scutellata*; B, *Oxyilia duponchelii*; C, *Pilemia tigrina*; D, *Phytoecia praetextata*.  
(Photos: I. Șt. Iorgu)

1 spec., Oltina (CT), 17.05.1955, P.G.A.; 11 specs, Valu lui Traian (CT), 18-21.06.1955, P.S.X., 21.06.1958, S.N., 28.06.1961, I.A.; 1 spec., Hanu Conachi (GL), 18.05.1956; 17 specs, Esechioi (CT), 19.05.1958, 14-25.05.1962, 9-14.05.1963, 1.07.1987, S.N.; 1 spec., Căldărușani (IF), 21.05.1960, R.A.; 1 spec., Măcin (TL), 23.05.1961; 18 specs, Canaraua Fetii (CT), 27.05.1962, 15.05.1963, S.N.; 5 specs, Comarova Forest, Mangalia (CT), 2-3.06.1962, S.N.; 3 specs, Agigea (CT), 30.05.1963, P.G.A., 20.06.1964, W.M.; 1 spec., Hagieni Forest (CT), 7.06.1963, P.G.A.; 1 spec., C. A. Rosetti, Delta Danube (TL), 12.05.1964, W.M.; 1 spec., Budești (CL), 3.06.1964, R.A.; 18 specs, Dumbrăveni Forest (CT), 23.05.1965, S.N., 14.05.1995, P.C., A.M.; 2 specs, Nucet (DB), 15.06.1970, M.D., A.I.; 1 spec., Iortmac Lake (CT), 17.05.1972, S.N.; 2 specs, Spain, Zaragoza, 5.04.1977, G.C.; 1 spec., Dumbrava de Jos (MH), 14.05.1982, S.R.; 1 spec., Strehaia (MH), 24.06.1983, P.C.; 1 spec., Sihlea (VN), 23.06.1987, P.C.; 8 specs, Nuci (CL), 05.1988, M.I.; 4 specs, Vasilați (IF), 18.05.1988, S.R.; 1 spec., Maliuc, Mila 26, Danube Delta (TL), 19.05.1992, M.I.; 1 spec., Cetatea Arganum, Capul Doloșman, Razelm Lake (TL), 11.05.1993; 1 spec., Teița, Celic Dere (TL), 20.05.1997, P.C.; 2 specs, Turkey, Göreme, Nevşehir, 9.05.1998, P.S.M., I.Al.; 2 specs, Turkey, Aksaraz, 9.05.1998, P.S.M., I.Al.; 1 spec., Unguriu, Măgura (BZ), 19.07.2004, U.V.

*Phytoecia (Phytoecia) cylindrica* (Linnaeus, 1758)

1 spec., without data, F.Ed.; 5 specs, Comana Forest (GR), without other data, M.A.L.; 4 specs, București, Băneasa Forest, 10.05.1952, 5.05.1982, 18.05.1991, S.N.; 1 spec., Brănești, Pasărea Forest (IF), 30.04.1953, S.N.; 1 spec., Oravița (CS), 1.07.1953, S.N.; 3 specs, Bârnova (IS), 4.06.1953, 4.06.1954, S.N.; 1 spec., Mediaș (SB), 5.06.1954, S.N.; 1 spec., Deva (HD), 6.06.1955, S.N.; 11 specs, Băile Herculane (CS), 15.07.1955, S.N., 20.05.1964, 30.05.1965, P.G.A., 20.07.1991, S.N.; 3 specs, Căldărușani (IF), 31.05.1957, P.S.X., 21.05.1960, R.A.; 3 specs, Chitila (IF), 10.05.1958, P.S.X.; 5 specs, Oltina (CT), 15.05.1958, S.N.; 4 specs, Săbăreni (GR), 17.05.1958, S.Ig., P.S.X.; R.A.; 8 specs, Canaraua Fetii (CT), 27.05.1962, S.N., 20.05.1994, A.G.; 2 specs, Mangalia, Comarova Forest (CT), 2.06.1962, P.G.A., 17.06.1963, S.N.; 1 spec., Agigea (CT), 15.06.1964, P.S.X.; 8 specs, Domogled Mt., Cerna Mts (CS), 2.06.1965, P.G.A., D.I.; 10 specs, Dumbrăveni Forest (CT), 23.05.1965, S.N., 14.05.1995, P.C.; 4 specs, Hagieni Forest (CT), 21.05.1965, S.N., 6.06.1965, P.S.X.; 1 spec., Valea Lungă (DB), 28.05.1967, R.A.; 1 spec., Ciolpani, Țigănești Forest (IF), 26.04.1966, R.A.; 1 spec., Strehaia (MH), 12.05.1982, S.R.; 11 specs, Negureni Forest (CT), 18.05.1993, P.C., 18-21.05.1994, H.C., 2 specs, Valea Fagilor, Luncavița (TL), 24.05.2005, S.R., A.G.

*Phytoecia (Phytoecia) erythrocnema* Lucas, 1846

1 spec., Morocco, Cascades d'Ouzoud, 27.04.2007, C.G. („Atlas” Expedition); 5 specs, Morocco, Volubilis, 30.04.2007, P.C. („Atlas” Expedition).

*Phytoecia (Phytoecia) icterica* (Schaller, 1783)

4 specs, Hațeg (HD), without other data, K.D.; 1 spec., Craiova (DJ), 07.1946; 8 specs, București, without other data, 6.X.1957, P.S.X.; 3 specs, Comana Forest (GR), without other data, M.A.L., 15.05.2005, U.V.; 1 spec., Ploiești (PH), 10.06.1953; 1 spec., București, Băneasa Forest, 24.05.1954; 1 spec., Budești (CL),

28.05.1954; 19 specs, Tecuci (GL), 5.06.1954. S.N.; 2 specs, Oltina (CT), 17.05.1955, S.N.; 36 specs, Canaraua Fetii (CT), 15.05.1958, 27.05.1962, 15.05.1963, 11.06.1967, 15-16.06.1984, S.N., 19.05.1993, A.M.; 1 spec., Valea lui David (IS), 10.06.1958, S.N.; 1 spec., Mogoșoaia (IF), 26.05.1959, R.A.; 1 spec., Esechioi (CT), 9.06.1961, S.N.; 5 specs, Dumbrăveni Forest (CT), 23.05.1965, S.N., 17-21.05.1994, P.C., H.C.; 1 spec., Strehaia (MH), 24.06.1983, S.R.; 3 specs, southern Dobrogea (CT), 28.06.1987, S.N.; 2 specs, Negureni Forest (CT), 18.05.1993, P.C., P.A.; 1 spec., Negureni, Valea Cișmelelor (CT), 18.05.1994, H.C.; 1 spec., București, 30.01.2002, A.G.; 1 spec., Pietroșani (GR), 28.04.2004, P.C.; 2 specs, Coșnea f.h., Poienile de sub Munte (MM), 19.07.2004, P.C.

*Phytoecia (Phytoecia) nigricornis* (Fabricius, 1781)

9 specs, Comana Forest (GR), without other data, M.A.L., F.Ed., 5.07.1951, 14.05.-3.06.1955, 16.06.1959, 24.05.1962, S.N.; 1 spec., Călimănești, Cozia monastery (VL), 9.06.1953, S.N.; 1 spec., Oravița (CS), 1.07.1953, S.N.; 3 specs, Bârnova (IS), 4.06.1954, 20.06.1969, S.N.; 18 specs, Tecuci (GL), 5.06.1954. S.N.; 1 spec., Armășești (IF), 27.06.1954; 1 spec., Mangalia, Comarova Forest (CT), 1.07.1955, S.N.; 1 spec., Căldărușani (IF), 31.05.1957, P.S.X.; 4 specs, Brănești, Pasărea Forest (IF), 26.05.1958, 5-19.06.1959, S.N.; 3 specs, Canaraua Fetii (CT), 19.06.1960, S.N., 20.05.1993, H.C.; 1 spec., Esechioi (CT), 25.05.1962, S.N.; 1 spec., Clisura Dunării, Slătinic (CS), 17.05.1976, S.N.; 1 spec., Sihlea (VN), 23.06.1987, M.I.; 1 spec., Sohodol Gorges (Cheile Sohodolului) (GJ), 21.06.1992, P.C.; 1 spec., Făgăraș Mts, Bâlea waterfall, 24.07.1994, P.C.; 3 specs, Celic Dere monastery, Telița (TL), 20.05.1997, S.R., H.C.; 1 spec., Valea Teilor (TL), 22.05.1997, S.R.; 2 specs, Ciucurova (TL), 22.05.1997, H.C.; 1 spec., Telița (TL), 24.05.1997, P.C.; 1 spec., Dumbrăveni Forest, Ceair Valley (CT), 17.07.1997, A.A.D.; 1 spec., Florești (GR), 24.07.1997, P.C.; 1 spec., Pietrele Albe, Valley of the Jiu River (GJ), 7.07.2004, B.C.; 1 spec., Locurele hermitage (GJ), 8.07.2004, B.C.

*Phytoecia (Phytoecia) pustulata* (Schrank, 1776)

3 specs, without data, K.D.; 1 spec., Slobozia (IL), without other data, F.Ed.; 1 spec., Bârlad Valley (SV), without other data, M.A.L.; 4 specs, Comana Forest (GR), without other data, M.A.L.; 1 spec., Comana, 1937; 2 specs, Austria, Umgebungen Graz, without other data; 2 specs, Făget (CJ), 19.05.1946; 1 spec., Voinești (DB), 24.05.1950; 1 spec., Gemenea (DB), 31.05.1950; 3 specs, București, Băneasa Forest, 29.03.1951, S.N., 24.05.1955; 1 spec., Mogoșoaia (IF), 23.05.1954; 1 spec., Valu lui Traian (CT), 21.05.1955; 7 specs, Săbăreni (GR), 12.05.1958, R.A.; 1 spec., Budești (CL), 16.05.1958, R.A.; 5 specs, Băile Herculane (CS), 4.07.1961, S.N., 19.05.1963, P.G.A., 18-27.05.1965, P.G.A., S.N.; 1 spec., Hagieni (CT), 7.06.1965, S.N.; 1 spec., Valea Lungă (DB), 28.05.1967, R.A.; 1 spec., Valea Rea, Sinaia (PH), 25.08.1967, N.St.; 9 specs, Ieșelnița (MH), 13-14.05.1969, W.M., P.G.A.; 1 spec., Doftana (BC), 11.06.1971, W.M.; 1 spec., Strehaia (MH), 12.05.1982, S.R.; 3 specs, Livada (SM), 12.06.1985, P.G.A.; 2 specs, Esechioi (CT), 1.07.1987, S.N.; 2 specs, Aușeu (BH), 24-27.06.1994, S.Au.; 1 spec., Turkey, Çukurova region, Osmaniye, 1.05.1998, P.S.M.; 1 spec., Balauru hill, Izvorul Dulce, Beceni (BZ), 6.05.2002, U.V.

*Phytoecia (Phytoecia) virgula* (Charpentier, 1825)

1 spec., Piatra Olt (OT), without other data, F.Ed.; 1 spec., Laculez (in southern Bucharest), without other data, F.Ed.; 1 spec., Dobrogea, without other data, F.Ed.; 2 specs, Măcin (TL), without other data, M.A.L.; 1 spec., București, without other data, M.A.L.; 3 specs, Comana Forest (GR), without other data, M.A.L.; 1 spec., Dobromir (CT), 22.06.1950, S.N.; 12 specs, Agigea (CT), 12.06.1951, S.N., 29.05.1962, P.G.A., 27.04.-30.05.1963, P.G.A., P.S.X., 15-17.06.1964, P.G.A.; 1 spec., Murfatlar (CT), 12.06.1953, S.N.; 2 specs, Tecuci (GL), 5.06.1954, S.N.; 1 spec., Bugeac Lake (CT), 29.08.1955, S.N.; 8 specs, Valu lui Traian (CT), 21-22.05.1955, P.S.X., 18.05.-19.06.1955, S.N.; 1 spec., Oltina (CT), 17.05.1955, S.N.; 2 specs, Săbăreni (GR), 12.05.1958, R.A.; 1 spec., Oltenița (CL), 8.05.1959, P.S.X.; 1 spec., Căldărușani (IF), 21.05.1960, R.A.; 4 specs, Hagieni Forest (CT), 15.06.1961, 11.05.-7.06.1965, S.N.; 4 specs, Canaraua Fetii (CT), 27.05.1962, 11.06.1967, S.N., 19.05.1994, H.C.; 5 specs, Esechioi (CT), 9-12.05.1963, 1.07.1987, S.N.; 10 specs, Dumbrăveni Forest (CT), 23.05.1965, S.N., 18.05.1994, H.C.; 1 spec., Adamclisi (CT), 2.06.1965, P.S.X.; 1 spec., Cogeacu Bandiți (CT), 3.06.1965, P.S.X.; 1 spec., Bulgaria, Varna, 4.06.1967, S.N.; 1 spec., Cămârzana (SM), 19.05.1987, P.C.; 1 spec., Negureni Forest (CT), 16.05.1994, G.A.; 2 specs, Izvoarele (TL), 21.05.1997, S.R., P.C.; 1 spec., Ciucurova Forest (TL), 22.05.1997, P.C.; 1 spec., Valea Teilor (TL), 22.05.1997, P.C.; 3 specs, Luncavița, Valea Fagilor (TL), 23.05.1997, S.R., H.C., 25.05.2005, M.I.; 5 specs, Cerna, Măcin Mountains National Park (TL), 26.05.2005, S.R, M.I.; 2 specs, Suluc Valley, Măcin Mountains National Park (TL), 27.05.2005, M.I.

*Pilemia* Fairmaire, 1864*Pilemia hirsutula* (Frolich, 1793)

3 specs, Dobrogea, without other data, F.Ed.; 1 spec., Hârșova (CT), without other data, M.A.L.; 1 spec., the Caucasus, 1888, G.L.; 3 specs, Tecuci (GL), 5.06.1954, S.N.; 1 spec., Valu lui Traian (CT), 21.06.1955, P.S.X.; 1 spec., Mangalia, Comarova Forest (CT), 1.07.1955, S.N.; 24 specs, Hagieni Forest (CT); 29.05.-6.06.1963, S.N., P.G.A., 19.06.1964, D.I., P.G.A., 5-7.06.1965, S.N., 27.05.1984, P.G.A.; 5 specs, Dumbrăveni Forest (CT), 23.05.1965, S.N.; 7 specs, Ghidigeni (GL), 12.07.1981, S.N.

*Pilemia tigrina* Mulsant, 1851

1 spec., Borosjenő (Ineu), 4.07.1925, D.L.; 3 specs, Ineu (AR), 4.07.1954, 21.06.1963, S.N.; 2 specs, Dumbrăveni Forest (CT), 23.05.1965, S.N. (Fig. 5 C).

## Tribe Pogonocherini

*Pogonocherus* Dejean, 1821*Pogonocherus eugeniae* Ganglbauer, 1891

1 spec., Italy, Romagna (FO), 700 m, 09.1977, S.G.

*Pogonocherus fasciculatus* (De Geer, 1775)

1 spec., Azuga (PH), without other data, F.Ed.; 2 specs, Kronstädter Gebirge (Brașov Mts) (BV), without other data, D.Fr.; 1 spec., Sinaia (PH), without other data; 2 specs, Germany, without other data, K.D.; 1 spec., Câmpulung Moldovenesc (SV), 23.03.1951; 1 spec., Retezat Mts, Gura Apei, 28.07.1956, S.N.; 1 spec., Tăul

lui Dumitru swamp (MM), 7.07.1996; 1 spec., Giupalău Mts (SV), 16.06.1998; 1 spec., Maramureş Mountains Natural Park, Poloninca Peak (MM), 12.06.2007, P.C.

*Pogonocherus hispidulus* (Piller & Mitterpacher, 1783)

1 spec., without data, K.D.; 4 specs, Retezat Mts, Gura Zlata, 9.08.1955, S.N.; 1 spec., Moldova Nouă (CS), 4.05.1973, S.N.; 1 spec., Măgura (BZ), 28.06.2006, U.V.

*Pogonocherus hispidus* (Linnaeus, 1758)

1 spec., Azuga (PH), without other data, F.Ed.; 1 spec., Croatia, Dalmatia, without other data, K.D.; 1 spec., Brăneşti, Pasărea Forest (IF), 6.06.1959, S.N.; 1 spec., Băile Herculane (CS), 13.05.1960, P.G.A.; 1 spec., Vişeu de Sus (MM), 11.06.1966, S.N.; 1 spec., Moldova Nouă (CS), 25.05.1974, S.N.; 1 spec., Zăvestreni (TR), 9.05.1980, S.R.; 1 spec., Fundata (IL), 14.X.1980, D.D.; 1 spec., Dumbrăveni Forest, Furnica (CT), 21.05.1994, P.C.

*Pogonocherus neuhausi* Müller, 1916

1 spec., Italy, Puglia, Gargano, San Menaio, 7.09.1977, S.G.; 4 specs, Italy, Romagna (FO), 700 m, 10.08.1977, S.G.

*Pogonocherus ovatus* (Goeze, 1777)

7 specs, Azuga (PH), without other data, F.Ed.

*Pogonocherus perroudi* Mulsant, 1839

1 spec., Italy, Puglia, Gargano, San Menaio, 7.08.1977, S.G.; 6 specs, Italy, Romagna (FO), 3.08.1977, S.G.

Tribe Pteropliini

*Albana* Mulsant, 1846

*Albana m-griseum* Mulsant, 1846

2 specs, France, Cipières, le Plan, 8.06.1974, B.P.; 1 spec., France, Cipières, Bords du Loup, 14.06.1974, B.P.; 1 spec., France, Pyrénées-Orientales, Amélie-les-Bains, 06.1982.

*Niphona* Mulsant, 1839

*Niphona picticornis* Mulsant, 1839

1 spec., France, Alpes Maritimes, Vallauris, 18.04.1974, B.P.; 2 specs, Lebanon, Beirut, 06.1982.

*Pterolophia* Newman, 1842

*Pterolophia caudata* (Bates, 1873)

6 specs, Japan, Saitama, Mitsumine Mt., 10.08.1970, O.S.; 2 specs, Japan, Saitama, Chichibu, 27.06.1978, O.S.

Tribe Saperdini

*Eutetrappa* Bates, 1884

*Eutetrappa chrysochloris* (Bates, 1879)

2 specs, Japan, Fukushima, Aizu, 10.06.1971, O.S.

*Menesia* Mulsant, 1856*Menesia bipunctata* (Zoubkoff, 1829)

1 spec., without data, K.D.; 1 spec., Bicaz, Lapos Peak, 4.06.1971, S.N.

*Saperda* Fabricius, 1775*Saperda carcharias* (Linnaeus, 1758)

1 spec., without data, K.D.; 2 specs, Grăușor (MS perhaps), without other data; 1 spec., Buștenari (PH), without other data, C.R.; 1 spec., Măgura Odobești (VN), 14.08.1955, S.N.; 2 specs, București, Băneasa Forest, 14.04.1961, S.N.; 1 spec., Italy, Pavia, Ottobiano, 3.X.1965, G.F.; 55 specs, Răstoaca, Valley of the Putna River (VN), 29-30.08.1970, 30.08.-5.09.1971, 28.08.-1.09.1972, 27-29.08.1973, 2.09.1975, 1-28.08.1987, 2.07.1989, S.N.; 1 spec., Găiseni (GR), 20.05.1996, I.A.I.; 2 specs, Izvorul Dulce, Beceni (BZ), 1.08.2005, 12.08.2006, U.V.

*Saperda octopunctata* (Scopoli, 1772)

1 spec., France, Besançon, without other data, M.A.L.; 3 specs, Măcin ? (TL), without other data, F.Ed.; 1 spec., Bârlad Valley (SV), without other data, M.A.L.; 24 specs, Comana Forest (GR), without other data, M.A.L., 30.05.1954, 14.05.1955, 16.06.1959, 19.07.1966, S.N.; 4 specs, Brănești, Pasărea Forest (IF), 25-27.05.1951, 29.04.1959, S.N.; 1 spec., Lacul Sărat (BR), 6.07.1958, S.N.; 12 specs, Babadag Forest (TL), 06.1958, S.N., 20.06.1963, P.S.X., 20.07.1977, P.G.A.; 2 specs, Băile Herculane 19.07.1966, S.N.; 1 spec., France, Aiguines, 29.05.1969, B.P.; 2 specs, France, Var, Roquebrune-sur-Argens, La Bouverie, 30.05.1972, B.P.; 3 specs, Ciucurova Forest (TL), 22.05.1997, S.R., P.C.; Valea Bei f.h., Sasca Montană (CS), 10.08.2005, P.E.

*Saperda perforata* (Pallas, 1773)

1 spec., without data, K.D.; 1 spec., Schneckenberg (Dealul Melcilor), Brașov, without other data; 2 specs, București, without other data, M.A.L., 22.07.1955, P.G.A.; 1 spec., Căpâlnaș (AR), 19.04.1951, S.N.; 1 spec., Rășinari (SB), 1.06.1954, S.N.; 1 spec., Iași (IS), 6.06.1958, S.N.; 11 specs, Periprava, Danube Delta (TL), 4.06.-17.07.1959, 29.06.1963, S.N., 22.06.1966, P.G.A., 15-17.07.1971, 19.06.1990, S.N.; 8 specs, Letea Forest, Danube Delta (TL), 28-29.06.1963, P.G.A., D.I., 17.07.1964, 20.08.1981, P.G.A.; 1 spec., Babadag Forest (TL), 11.06.1972, S.N.; 10 specs, C. A. Rosetti, Danube Delta (TL), 24.06.1962, S.N., 10.06.1979, 12-15.07.1980, 21.08.1981, P.G.A., 20.07.1987, S.L.; 2 specs, Băile Herculane (CS), 15.06.1987, S.N.; 1 spec., Izvorul Dulce, Beceni (BZ), 06.1999, U.V.

*Saperda populnea* (Linnaeus, 1758)

1 spec., Târgu Jiu (Sisești) (GJ), without other data; 1 spec., Bârnova (IS), 2.06.1953, S.N.; 128 specs, Comana Forest (GR), 23.05.-24.06.1954, 14.05.-3.06.1955, 24.05.1958, 14.05.-14.06.1959, S.N.; 1 spec., Budești (CL), 16.05.1958, R.A.; 15 specs, Vlădila (OT), 20.03.1960; 1 spec., Oltișoru (OT), 15.04.1960, P.G.A.; 1 spec., Vrata Forest, Gârla Mare (MH), 25.05.1963; 1 spec., Moldova Nouă (CS), 26.05.1973, S.N.; 5 specs, Sfântu Gheorghe, Danube Delta (TL), 25.06.1982, S.N.; 1 spec., Turulung Vii (SM), 13.06.1985, M.I.; 1 spec., Dumbrăveni Forest, Furnica (CT), 14.05.1995, P.C.

*Saperda punctata* (Linnaeus, 1767)

1 spec., Craiova (DJ), without other data, S.I.; 1 spec., Pozsoga, Krasso-Szörény (Caraș Severin), 05.1934, T.E.; 1 spec., București, Băneasa Forest, 10.05.1952, S.N.; 9 specs, Comana Forest (GR), 30.05.1954, 16.06.1959, S.N.; 3 specs, Babadag Forest (TL), 23.06.1955, 11-14.06.1972, S.N.; 4 specs, Canaraua Fetii (CT), 29.06.1956, 27.05.1962, 17.07.1964, S.N.; 2 specs, Brănești, Pasărea Forest (IF), 11.06.1961, S.N.; 1 spec., Budești (CL), 3.06.1964, R.A.; 1 spec., Videle (TR), 18.06.1964, N.St.; 3 specs, Hagieni Forest (CT), 19.06.1964, P.G.A., 5.06.1965, S.N.

*Saperda scalaris* (Linnaeus, 1758)

3 specs, Azuga (PH), without other data, F.Ed.; 3 specs, Dobrogea, without other data, F.Ed.; 1 spec., Cruce, Broșteni, the Carpathian Mountains (SV), without other data, M.A.L.; 2 specs, Comana (GR), without other data, M.A.L., 12.06.1983, S.N.; 1 spec., București, 25.07.1953, S.N.; 3 specs, Rarău Mts, 26.07.1953, S.N.; 1 spec., Retezat Mts, Gura Apei, 28.07.1956, S.N.; 1 spec., Băile Herculane (CS), 4.07.1964, S.N.; 1 spec., Vișeu de Sus (MM), 10.06.1965, S.N.; 3 specs, Moldova Nouă (CS), 21.06.1971, 1.06.1973, S.N.; 2 specs, France, Aiguines, Forêt de Margés, 28.05.1974, 5.06.1974, B.P.; 9 specs, Valley of the Doftana River (PH), 24-26.06.1994, P.C.; 2 specs, Trăiseni (PH), 25.06.1994, P.A.; 2 specs, Gurghiu Mts (MS), 10-18.07.1994, M.P.B.; 1 spec., Cernica Forest (IF), 7.07.1995, P.S.M.; 1 spec., Valley of the Mara River, 2 km upstream Desești (MM), 17.07.1998, P.S.M.; 10 specs, Valley of the Rica River, Poienile de sub Munte, (MM), 14.06.2003, S.R., S.Me.; 1 spec., Valley of the Vaser River, Cozia (MM), 22.07.2004, B.C.; 1 spec., National Park Piatra Craiului Mts, Sătic (AG), 22.06.2005, S.R.

*Saperda similis* Laicharting, 1784

1 spec., France, Besançon, without other data, M.A.L.

*Stenostola* Dejean, 1835*Stenostola ferrea* (Schrank, 1776)

2 specs, Brănești, Pasărea Forest (IF), 22.05.1951, S.N., 30.04.1953; 1 spec., Carmen Sylva (Eforie Sud) (CT), 22.06.1952, S.N.; 18 specs, Băile Herculane (CS), 12.07.1953, 29.05.1956, S.N., 17.05.1964, P.G.A., 21.05.1967, 12.06.1978, 12.06.1982, 6.06.1985, 20.07.1991, S.N.; 2 specs, Bârnova (IS), 4.06.1954, 19.05.1956, S.N.; 1 spec., Canaraua Fetii (CT), 27.05.1962, S.N.; 1 spec., Râncea Novaci, Novaciu Mts (GJ), 24.06.1963; 1 spec., Ieșelnița (MH), 14.05.1969, P.G.A.; 1 spec., Moldova Nouă (CS), 25.05.1974, S.N.; 3 specs, France, Aiguines, le Château, 28.05.1974, B.P.; 12 specs, France, Aiguines, Forêt de Margés, 28.05.1974, 5.06.1974, B.P.; 14 specs, Italy, Udine, Ciolla di Prepotto, 20.06.1983, R.P.

## Tribe Tetropini

*Tetrops* Stephens, 1829*Tetrops praeustus* (Linnaeus, 1758)

5 specs, București, without other data, M.A.L., F.Ed.; 1 spec., Slobozia (IL), without other data, F.Ed.; 1 spec., Laculez, (in southern Bucharest), without other data, F.Ed.; 1 spec., Austria, Umgebungen Graz, without other data, P.K.A.; 3 specs,



Azuga (PH), 06.1933; 3 specs, Roman county, 1933; 1 spec., Ilfov county, 16.05.1935; 1 spec., Moara Domneasă (IF), 10.05.1938; 2 specs, Mireșu Mare (Nagynyires) (MM), 1942, V.E.; 2 specs, Horezu (VL), 29.05.1946; 1 spec., Lacul Sărat (BR), 28.05.1956, S.N.; 8 specs, Suceava (SV), 16.05.1957, 8.05.1959, N.I.; 3 specs, Canaraua Fetii (CT), 14.05.1958, 27.05.1963, S.N.; 6 specs, Pitești (AG), 2-3.06.1960, 9.05.1961, 2 06.1963, S.N.; 2 specs, Gemenea (DB), 19.05.1961; 3 specs, Comana Forest (GR), 24.05.1962, S.N.; 2 specs, Constanța, Palas (CT), 21.05.1962, 8.05.1963, R.A.; 1 spec., Hagieni Forest (CT), 7.06.1963, P.G.A.; 1 spec., Brănești, Pasărea Forest (IF), 5.05.1966, R.A.; 2 specs, Ieșelnița (MH), 3.06.1968, P.S.X., 14.05.1969, P.G.A.; 2 specs, Ieșelnița (MH), 3.06.1968, 14.05.1969, P.G.A.; 2 specs, Hungary, Budapest, Széchenyi-hegy, 1.06.1969, P.S.X.; 4 specs, Italy, Ravenna, Bridighella, 13.04.1970, G.P.; 5 specs, București, 21.05.1971, 8.05.1972, R.A., 20.05.1990, 12.05.1994, 16.05.1997, P.S.M.; 1 spec., Tulcea (TL), 24.05.1981, P.S.X.; 1 spec., Strehăia (MH), 10.05.1982, S.R.; 1 spec., Balauru hill, Izvorul Dulce, Beceni (BZ), 4.05.2005, U.V.; 1 spec. Schitu (GR), 15.07.2007, P.C.

*Tetrops starkii* Chevrolat, 1859

1 spec., Băile Herculane (CS), 18.05.1965, S.N.

DISCUSSIONS

The specimens of the acquired collections at the end of the 19th century and the beginning of the 20th are preserved for their historical value, although not all of them have collecting data. The specimens of Deszö Kenderessy collection, an amateur entomologist from Transylvania, were collected at the end of the 19th century from Hațeg Depression. The collection material of the amateur entomologist Eduard Fleck, acquired in 1914, was collected especially from the Bucegi Mountains, most of them from Azuga. A large number of the specimens of the Fridrich Deubel collection (amateur entomologist from Brașov), acquired in 1923, originates in the surroundings of Brașov. Arnold Lucien Montandon collection consists of coleopterans collected at the end of the 19th century and the beginning of the 20th one, from the royal estate of Broșteni, the Carpathian Mountains (Suceava county), Comana Forest (Giurgiu county) or Dobrogea.

The Lamiinae species of Romanian fauna represent 71 % of collections.

*Oplasia cinerea*, a rare species, is distributed in Europe and Near East. From Romania, it was reported from Băile Herculane, Sibiu, Brașov, Retezat Mountains – Gura Zlata (Panin & Săvulescu, 1961) and Pietrele Albe – Valley of the Jiu River (Serafim, Chimișliu & Lila, 2004).

*Agapanthia kirbyi* is distributed in Europe and Near East. From Romania, it was reported from Băile Herculane, Cocioc, Măcin, Canaraua Fetii (Panin & Săvulescu, op.cit.), Cheile Țesnei, Mehedinți Mountains (Ruicănescu, 1997). In the collections of "Grigore Antipa" Museum there are specimens collected from Băile Herculane, Canaraua Fetii and Oreva (Danube Clisura).

*Agapanthia osmanlis* is distributed in South-East Europe (Romania, Bulgaria, Hungary, European Turkey, Serbia, Kosovo, Voivodina, Montenegro) and Near East. In Romania the species was cited only in Comana Forest (Panin & Săvulescu, op.cit.). In the Museum's collections there are specimens collected from Comana Forest and Snagov Forest.

*Agapanthia cynarae* was cited by Csíki (1905) from Plavișevița, by Ruicănescu (1992) from Oglănic Valley, Iron Gate and by Botu (1998) from Gura Văii and Schela Cladovei. In collections there are specimens, collected from the Danube Clisura (Oreva and Slătinic), in May 1976 (unpublished data). The species occurs in South and South East Europe.

In 2005, the species *Theophilea subcylindricollis* was cited for the first time in Romania, from Moldova region (Botanical Garden of Iași, „Valea lui David” Nature Reserve, Mârzești Forest, Bîrnova Forest, Vlădeni wetland, Probotă, Bălătau Nature Reserve (Dascălu, 2005). Also, the species was found in Cheveres Forest, Timiș county (Hoskovec & Rejzek, 2009). In the Museum’s collections there are specimens collected in 1937 from Chișinău, Republic of Moldova.

*Deroplia genei*, Southern and Central European species, is rare in Romania. It was reported from Greci (Montandon, 1908), Sibiu and Cislăchioara (Petri, 1925-1926), Valea Iortmacului (Panin & Săvulescu, op.cit.). In collections there are specimens collected in South Dobrogea: Canaraua Fetei, Baș Punar, Oltina.

*Carinatodorcadion aethiops*, *C. fulvum*, *Neodorcadion bilineatum*, *Pedestredorcadion murrayi*, *P. pedestre*, *P. tauricum* are common in Romania.

*Carinatodorcadion aethiops* and *C. fulvum* are European species. *Neodorcadion bilineatum* occur in South-East Europe, Near East, *Pedestredorcadion pedestre* in Central, East and South-East Europe, *P. tauricum* in South-East Europe, *P. murrayi* in Romania, Serbia, Kosovo, Voivodina and Montenegro.

*Neodorcadion exornatum*, a rare species in Romania (especially in Dobrogea), is also distributed in Bulgaria, European Turkey, Greece. In the collection there are specimens found in Dobrogea and Oltenia (Vârvoru de Jos).

*Pedestredorcadion litigiosum* is reported only from Dobrogea: Cernavodă (Fleck, 1905), Iglia and Târgușor (Ester) (Montandon, 1906), Măcin (Montandon, 1908), Babadag (Panin & Săvulescu, op.cit.). In the Montandon’s collection there are specimens collected from Cernavodă and Măcin. The species occur in Bulgaria, Romania, Republic of Moldova ?, Ukraine ?.

From Romania the species *Pedestredorcadion holosericeum* is reported only from Moldova: Botoșani (Panin & Săvulescu, op.cit.), Baisa and Dorohoi (Andriescu, 1972). In the collection there are specimens collected from Botoșani, Dorohoi, Suceava. The species occur in Belarus, Poland, Central and South Russia, Romania, Ukraine, Near East.

*Pedestredorcadion pusillum* has been cited by Montandon (1908) from Zorleni and Mangalia, by Panin and Săvulescu (1961) from Lacul Sărat, Galați, Tecuci, Babadag. In the collection there are specimens collected at Bârlad Valley, Lacul Sărat, Babadag, Mangalia, Balta Albă. In the Cerambycidae Type Collection of the Sminthonian Institute two *Pedestredorcadion pusillum* syntypes coming from Băile Herculane and Bucharest were preserved (Lingafelter, Monné & Nearn, 2004-2009). The species occurs in East Europe: Republic of Moldova, Romania, South Russia, Ukraine.

*Herophila tristis* is a Southern and Central European species. It is reported only from Banat: Băile Herculane (Panin & Săvulescu, op.cit.; Ruicănescu, 1997) and Oglănic Valley, Porțile de Fier [Iron Gates] (Ruicănescu, 1992).

*Cardoria scutellata* is cited from Sibiu, Aiud, Geaca, Zau de Câmpie (Petri, 1912; Panin & Săvulescu, op.cit.). The species occurs in Central and East Europe, Near East. In the collection there is one specimen collected at Hagieni Forest.

From Romania, the species *Pilemia tigrina* is reported from Dej, Geaca, Zau de Câmpie (Petri, 1912), Deva (Panin & Săvulescu, 1961), Dealul lui Dumnezeu, Mârzești, Reserve „Valea lui David”, Natural Park „Grădiștea Muncelului-Cioclovina”, Natural Park „Iron Gate”, Ineu (Tatole et al., 2009). In the collection there are specimens collected at Ineu and Dumbrăveni Forest. *Pilemia tigrina* was included in the list of “Natura 2000” species from Romania (Tatole et al., 2009).

*Parmena bicincta* is an endemic species of Balkan Peninsula. *Oxyilia duponcheli* is an endemic species of South Balkan Peninsula (Albania, Bulgaria, Greece, Macedonia).

In the collection of „Grigore Antipa” National Museum of Natural History, there is one specimen of *Coptosia* collected from Valu lui Traian (Dobrogea). This is the only report for Romania.

*Helladia praetextata* occurs in Bulgaria, Romania, Ukraine and Near East. In the collection there are specimens from Esehioi Forest (Southern Dobrogea). In Romania, until now, the species was found in Dobrogea (Panin & Săvulescu, 1961; Săvulescu & Popescu-Gorj, 1964).

*Helladia adelpha* is distributed in Cyprus, Near East, *Helladia humeralis* in Cyprus, Dodecanese Is., European Turkey, Near East, *Pedestredorcadion septemlineatum* in European Turkey, Near East

Westpalaeartic species: *Iberodorcadion fuliginator fuliginator* occurs in France, Germany, Switzerland, the Netherlands. *I. fuliginator meridionale* and *Albana m-griseum* occur in France and Spain.

*Iberodorcadion navasi*, *I. perezi hispanicum*, *I. neilense*, *I. seoanei seoanei*, *I. spinolae caunense* are endemic species from Spain.

The species *Agapanthia annularis*, *A. irrorata*, *A. sicula*, *Deroplia troberti*, *Parmena pubescens*, *P. solieri*, *Phytoecia erythrocnema*, *Pogonocherus neuhausi*, *Niphona picticornis* are found in the Mediterranean area.

In the Museum collections there are the following Eastpalaeartic species: *Mesosa longipennis*, *Oberea mixta*, *Pterolophia caudata*, *Eutetrappa chrysochloris* collected in Japan and included in collection by a material exchange with the Japanese specialists.

*Oberea mixta* is an endemic species of Japan.

*Mesosa longipennis* occurs in Japan and Korea; *Pterolophia caudata* in Russia, Japan, Korea, China; *Eutetrappa chrysochloris* in Russia (Sakhalin, Kuril Islands), Japan.

#### ACKNOWLEDGEMENTS

We thank to the reviewers Dr. Mikhail Danilevsky (Russia) and prof. Dr. Georgi Georgiev (Bulgaria) for their constructive comments and publishing advice. Thank to Dr. Ionuț Iorgu and Dr. Gabriel Chișamera for photographs. Thank to Mrs. Rada Tiță, Mrs. Marinela Năzăreanu, Mrs. Marcela Bugnar, Mrs. Mariana Foaltin for their help in preparation and labeling of the specimens and the proper conservation of collections.

CATALOGUL SPECIILOR PALEARCTICE DE LAMIINAE (COLEOPTERA:  
CERAMBYCIDAE) DIN PATRIMONIUL MUZEULUI NAȚIONAL DE ISTORIE  
NATURALĂ „GRIGORE ANTIPA” (BUCUREȘTI)  
(Partea a V-a)

REZUMAT

Catalogul cuprinde datele referitoare la 112 specii și subspecii palearctice de coleoptere cerambycidae din subfamilia Lamiinae, păstrate în colecțiile Muzeului Național de Istorie Naturală „Grigore Antipa” (București).

Dintre cele 85 specii de Lamiinae, citate din fauna României, în colecțiile Muzeului sunt prezente 79 de specii. Dintre acestea se remarcă speciile *Oplosia cinerea*, *Agapanthia kirbyi*, *A. osmanlis*, *A. cynarae*, *Theophilea subcylindricollis*, *Deroplia genei*, *Neodorcadion exornatum*, *Pedestredorcadion litigiosum*, *P. holosericeum*, *P. pusillum*, *Herophila tristis*, *Cardoria scutellata*, *Pilemia tigrina*, *Coptosia* sp., *Helladia praetextata*, *Menesia bipunctata*, *Stenostola ferrea*, *Tetrops starkii*.

*Parmena bicincta* și *Oxyilia duponcheli* sunt specii endemice în Peninsula Balcanică.

Dintre speciile vestpalearctice amintim: *Albana m-griseum* și *Iberodorcadion fuliginator meridionale* (specii endemice în Franța și Spania).

*Iberodorcadion navasi*, *I. perezi hispanicum*, *I. neilense*, *I. seoanei seoanei*, *I. spinolae caunense* sunt specii endemice în Spania.

*Agapanthia annularis*, *A. irrorata*, *A. sicula*, *Deroplia troberti*, *Parmena pubescens*, *P. solieri*, *Phytoecia erythrocnema*, *Pogonocheirus neuhausi*, *Niphona picticornis* sunt specii mediteraneene.

În colecțiile Muzeului se păstrează de asemenea specii estpalearctice: *Mesosa longipennis*, *Oberea mixta*, *Pterolophia caudata*, *Eutetrappa chrysochloris*, provenind din Japonia.

*Oberea mixta* este o specie endemică în Japonia.

LITERATURE CITED

- ANDRIESCU, I., 1972 - Contribuții asupra cunoașterii Cerambycidelor din nordul Moldovei. Muzeul de Științele Naturii Dorohoi. Studii și comunicări: 191-196. (in Romanian)
- BOTU, E., 1998 - Colecția de Cerambycidae a secției de Științele Naturii a Muzeului Regiunii Porților de Fier – Drobeta - Turnu Severin. Analele Banatului Științele Naturii, Timișoara.
- CSIKI, E., 1905 - Magyarország Cerambycidai. Rovartani Lapok, 12 (2): 61-64.
- DANILEVSKY, M. L., 2007 - A check-list of Longicorn Beetles (Coleoptera, Cerambycoidea) of Europe. Available online at: [http://www.coleoptera-literatura.ic.cz/literatura/checklist\\_cerambycidae\\_2007.doc](http://www.coleoptera-literatura.ic.cz/literatura/checklist_cerambycidae_2007.doc).
- DASCĂLU, M. M., 2005 - *Theophilea subcylindricollis* Hladil, 1988 (Coleoptera: Cerambycidae) a new genus and a new species for Romania's Fauna. Analele Științifice ale Universității „Alexandru Ioan Cuza” Iași, seria Biologie Animală, 51: 19-22.
- FLECK, ED., 1905 - Die Coleopteren Rumäniens. Buletinul Societății de Științe București, 14 (5): 119-145.
- HOSKOVEC, M., M. REJZEK, 2009 - Longhorn Beetles (Cerambycidae) of the West Palaearctic Region. Available online at: <http://www.cerambyx.uochb.cz>.
- LINGAFELTER, S., M. MONNÉ, E. NEARNS, 2004-2009 – Cerambycidae Primary Types of the Smithsonian Institution. Available online at: [http://elaphidion.com/default.asp?Action=Show\\_Types](http://elaphidion.com/default.asp?Action=Show_Types)
- LOBL, I., A. SMETANA (eds), 2010 - Catalogue of Palaearctic Coleoptera, 6: 1-924. Stenstrup: Apollo Books
- MAICAN, S., R. SERAFIM, 2009 - Data about some Cerambycids and Chrysomelids (Coleoptera: Chrysomeloidea) from Mediterranean Expeditions. [Results of the “Taurus”-2005, “Focida”-2006, “Punia”-2006, “Atlas”-2007 and “Euphrates”-2008 expeditions]. Travaux du Muséum National d’Histoire Naturelle “Grigore Antipa”, 52: 415-428.
- MONTANDON, A. L., 1906 - Notes sur la faune entomologique de la Roumanie. Buletinul Societății de Științe București, 15 (1-2): 30-80.
- MONTANDON, A. L., 1908 - Notes sur la faune entomologique de la Roumanie. Buletinul Societății de Științe București, 17 (1-2): 67-122.

- NEGRU, ȘT., A. ROȘCA, 1967 - Ord. Coleoptera. *In*: L'entomofaune des forêts du sud de la Dobroudja. Travaux du Muséum d'Histoire Naturelle "Grigore Antipa", 27: 119-145.
- PANIN, S., N. SĂVULESCU, 1961 - Coleoptere: Cerambycidae. *In*: Fauna României, 10 (5): 1-523. Edit. Academiei Române. (in Romanian)
- PETRI, K., 1912 - Siebenbürgens Käferfauna auf Grund ihrer Erforschung bis zum Jahre 1911. Verhandlungen und Mitteilungen des Siebenbürgischen Vereins für Naturwissenschaften zu Hermannstadt: 1-376.
- PETRI K., 1925-1926 - Ergänzungen und Berichtigungen zur Käferfauna Siebenbürgens 1912. Verhandlungen und Mitteilungen des Siebenbürgischen Vereins für Naturwissenschaften zu Hermannstadt, 76: 165-206.
- RUICĂNESCU, A., 1992 - Aspecte ale faunei de coleoptere din Valea Oglănicului (Porțile de Fier, Jud. Mehedinți). Ocrotirea naturii și a mediului înconjurător, 36 (1): 51-53. (in Romanian)
- RUICĂNESCU, A., 1997 - Coleoptere colectate din parcurile naționale Retezat și Valea Cernei. *In*: Entomofauna parcurilor naționale Retezat și Valea Cernei. Societatea Lepidopterologică Română Cluj-Napoca: 57-73. (in Romanian)
- SAMA, G., 2005 - Fauna Europaea: Cerambycidae. *In*: P. Audisio, 2005 - Fauna Europaea: Coleoptera 2. Fauna Europaea version 1.2. Available online at: <http://www.faunaeur.org>.
- SĂVULESCU, N., A. POPESCU-GORJ, 1964 - Pădurile din sud-vestul Dobrogei, monumente puțin cunoscute ale naturii. Ocrotirea Naturii, 8 (2): 257-276. (in Romanian)
- SERAFIM, R., 1985 - Contribution à la connaissance des Coléoptères Cerambycides du sud de Roumanie. Travaux du Muséum d'Histoire Naturelle "Grigore Antipa", 27: 69-94.
- SERAFIM, R., 1997 a - Contributions to the knowledge of the Coccinellidae and Cerambycidae (Coleoptera) in Maramureș Depression and Rodnei Mountains (Romania). Travaux du Muséum National d'Histoire Naturelle „Grigore Antipa”, 37: 69-87.
- SERAFIM, R., 1997 b - Contributions to the knowledge of the distribution of Coccinellidae and Cerambycidae (Coleoptera) in the Igriș Plateau, Săpânța river basin, Maramureș (Romania). Travaux du Muséum National d'Histoire Naturelle „Grigore Antipa”, 39: 307-314.
- SERAFIM, R., 1998 - Coccinellidae and Cerambycidae (Coleoptera) from Vișeu river basin, Maramureș, Romania. Travaux du Muséum National d'Histoire Naturelle „Grigore Antipa”, 40: 509-524.
- SERAFIM, R., 2004 - Cerambycidae (Coleoptera) from Maramureș and Țibleș Mountains, Maramureș (Romania). Travaux du Muséum National d'Histoire Naturelle „Grigore Antipa”, 46: 121-137.
- SERAFIM, R., 2005 - Catalogue of the Palaeartic species of Prioninae and Lepturinae (Coleoptera: Cerambycidae) from patrimony of „Grigore Antipa” National Museum of Natural History, Bucharest (Part I). Travaux du Muséum National d'Histoire Naturelle “Grigore Antipa”, 48: 103-117.
- SERAFIM, R., 2006 - The Catalogue of the Palaeartic species of Lepturinae (Coleoptera: Cerambycidae) from the patrimony of „Grigore Antipa” National Museum of Natural History, Bucharest (Part II). Travaux du Muséum National d'Histoire Naturelle “Grigore Antipa”, 49: 203-238.
- SERAFIM, R., 2007 - The Catalogue of the Palaeartic species of Spondylidinae (Coleoptera: Cerambycidae) from the patrimony of „Grigore Antipa” National Museum of Natural History (Bucharest) (Part III). Travaux du Muséum National d'Histoire Naturelle “Grigore Antipa”, 50: 221-230.
- SERAFIM, R., 2009 - The Catalogue of the Palaeartic species of Necydalinae and Cerambycinae (Coleoptera: Cerambycidae) from the patrimony of „Grigore Antipa” National Museum of Natural History, Bucharest (București) (Part IV). Travaux du Muséum National d'Histoire Naturelle “Grigore Antipa”, 52: 263-292.
- SERAFIM, R., S. MAICAN, 2004 - Contributions to the knowledge of the coleopterans from the littoral of the Black Sea (Romania). Travaux du Muséum National d'Histoire Naturelle „Grigore Antipa”, 47: 169-210.
- SERAFIM, R., S. MAICAN, 2008 - Data on Cerambycidae and Chrysomelidae (Coleoptera: Chrysomeloidea) from București and surroundings. Travaux du Muséum National d'Histoire Naturelle “Grigore Antipa”, 51: 387-416.

- SERAFIM, R., C. CHIMIȘLIU, N. G. LILA, 2004 - Catalogul cerambycidelor (Coleoptera, Cerambycoidea, Cerambycidae) din patrimoniul Muzeului Olteniei, Craiova. Oltenia. Studii și comunicări, 20: 189-198. (in Romanian)
- TATOLE, V., A. IFTIME, M. STAN, E. I. IORGU, I. IORGU, V. OȚEL, 2009 - Specii de animale Natura 2000 din România, București. 174 pp. (in Romanian)
- UNGUREANU, V., S. MAICAN, R. SERAFIM, 2008 - Diversity of Coleopterans: Cerambycidae, Chrysomelidae, Coccinellidae from Buzău Area (Romania). Travaux du Muséum National d'Histoire Naturelle "Grigore Antipa", 51: 171-183.

*Received: February 26, 2010*

*Accepted: July 26, 2010*

*Muzeul Național de Istorie Naturală "Grigore Antipa"*

*Șos. Kiseleff 1, 011341 București 2, România*

*e-mail: serafim@antipa.ro*