



# 九州大学比較社会文化研究所蔵の 昆虫模式標本

舘 亜古・寫 洪

**Insect Type Specimens in the Collection of the Biosystematics  
Laboratory, Graduate School of Social and Cultural Studies,  
Kyushu University, Fukuoka**

**Ako TACHI and Hiroshi SHIMA**

九州大学比較社会文化研究所生物多様性講座: 〒810-8560 福岡市中央区六本松4-2-1  
The Biosystematics Laboratory, Graduate School of Social and Cultural Studies, Kyushu University: Ropponmatsu 4-2-1, Fukuoka, 810-8560 Japan

## Abstract

Type materials of insects housed in the collection of the Biosystematics Laboratory, Graduate School of Social and Cultural Studies, Kyushu University, Fukuoka (BLKU), which follows the collection of the Biological Laboratory, College of General Education, Kyushu University, are cataloged. Each entry is arranged alphabetically by order, family, genus (subgenus, if published), and species (and subspecies, when published). All species are cited under the original combination followed by year of publication, abbreviated reference to the journal of the original description, volume, number and pages, sex and condition of specimens (dried, in alcohol or on slide). For holotypes and syntypes, all label data associated with the specimens are cited: in the data a slush “/” indicates the new paragraph on a label and a double slush “//” is used for separate label. For paratypes, the number and sex of specimens are noted (when difficult to recognize the sex of the specimen, only numbers are mentioned). Information on specimens or data are mentioned in remarks.

## はじめに

1949年に新制の九州大学に教養課程がおかれ、教養教育は、福岡県内3カ所の九州大学分校において行われることになった。その分校が1955年に福岡市中央区六本松(当時は福岡市大坪町)の地に統合され、九州大学教養部と呼称されるようになって以来、教養部生物学教室には複数の昆虫系統分類学の研究者が在籍し、昆虫類の調査、分類研究に携わってきた。九州大学教養部は1994年には廃止されたが、当時在籍していた昆虫研究者は、同じく六本松地区に新設された大学院比較社会文化研究院(当初は研究科)に移籍した。

比較社会文化研究院にはその後も昆虫研究者が在籍し、昆虫研究を継続している。

その間これらの研究者は、国内外における個人的なあるいは科学研究費補助金による野外調査に加え、九州大学探検会や探検部による台湾や奄美大島、韓国濟州島などの調査、九州大学山岳会によるネパールヒマラヤの調査などに参加し、標本の収集を行ってきた。さらに、学外の研究者による韓国、フィリピン、ネパール、台湾、ベトナム、ナイジェリアなどの調査による標本も、当時の教養部生物学教室に寄贈されている。これらの標

本の多くは、六本松地区の教養部生物学教室から比較社会文化研究院生物多様性講座へとひきつがれて保管されてきている。この膨大な量の標本は、九州大学の教職員や学生によって研究されただけでなく、国内外の研究者の求めに応じて広く貸与され、その結果が昆虫系統分類の非常に多数の論文として発表されてきた。

以下に示すのは、これまでに上記の標本に基づいて、新しいタクサとして発表された昆虫類の模式標本および副模式標本についてのデータである。今回示したも

のはすべて、比較社会文化研究院生物多様性講座の所蔵として確認できた標本のみで、未確認のものを含め今後調査を進める中で更に増加する可能性がある。また将来的には、これらの標本はすべて九州大学総合研究博物館に移管されることになっている。

## 凡例

- 1.各項目は、目、科、族、種ごとにそれぞれアルファベット順に配列される。
- 2.種名は原記載のままとし、以下の順に表示する：属名（亜属が設定されている場合は属名の後に括弧でくくって表示）、種（小）名、亜種名（表示されていた場合のみ）、命名者、発表年、著者名、原記載書誌名、巻（号）、ページ。
- 3.完全模式標本は、性別、保管状態（乾燥、液浸、プレパラート等）、ラベルに記述されている採集記録を記載する。ラベル上のデータは‘/’がラベル内での改行を表すものとし、ラベルが複数枚にわたっている場合は‘//’で表示する。
- 4.副模式標本は、標本数を雌雄別に記載する。ただし、原記載に性別の指定がない場合、もしくは標本の部分的損失等の理由によって雌雄の判別が困難であった個体は‘ex. (exs.)’と表示し、最後に保管状態を記載する。
- 5.完全模式標本で交尾器などの解剖、標本一部の重大な損失、原記載論文で発表されたデータとラベルのデータの内容が著しく異なる場合などについては最後に注釈を付け加える。

## CONTENTS

<b>COLEOPTERA</b> .....	3
Cerambycidae .....	3
Chrysomelidae .....	3
Scirtidae .....	5
<b>DIPTERA</b> .....	5
Anthomyzidae .....	5
Asteiidae .....	5
Calliphoridae .....	6
Dolichopodidae .....	6
Dryomyzidae .....	8
Fanniidae .....	9
Muscidae .....	9
Pallopidae .....	10
Perisclididae .....	10
Phoridae .....	10
Psilidae .....	11
Rhinophoridae .....	12
Sarcophagidae .....	12
Sciomyzidae .....	12
Sepsidae .....	12
Sphaeroceridae .....	13
Tachinidae .....	13
Tephritidae .....	22
Trichoceridae .....	22
<b>HETEROPTERA</b> .....	23
Miridae .....	23
<b>LEPIDOPTERA</b> .....	23
Danaidae .....	23
Hesperiidae .....	23
Lycaenidae .....	24
Nymphalidae .....	25
Papilionidae .....	25
Pieridae .....	25
Satyridae .....	27
Tineidae .....	27
<b>PSOCOPTERA</b> .....	28
Amphipsocidae .....	28
Caeciliusidae .....	28
Mesopsocidae .....	28
Pseudocaeciliidae .....	28
Psocidae .....	28
<b>SIPHONAPTERA</b> .....	30
Ceratophyllidae .....	30
Hystrihopsyllidae .....	30
Leptopsyllidae .....	30
<b>LITERATURE CITED</b> .....	30

## COLEOPTERA

## Cerambycidae

*Eustrangalis masatakai* Ohbayashi, 2003

Ohbayashi, N. 2003, Spec. Bull. Jpn. Soc. Coleopterol. [Satonius], 6: 362.

PARATYPES: 4 ♀♀ (dried).

*Glaphyra shimai* Hayashi et Makihara, 1981 (Fig. 1a)

Hayashi, M. & Makihara, H. 1981, Esakia, 17: 191.

HOLOTYPE ♂ (dried): Shawa/ E. Nepal/ 9. vi. 1972/ H. Shima.

PARATYPE: 1 ♀ (dried).

*Idiostrangalia quadrisignata* Hayashi et Makihara, 1981

Hayashi, M. & Makihara, H. 1981, Esakia, 17: 187.

HOLOTYPE ♂ (dried): Lelep/ E. Nepal/ 1. vi. 1972/ H. Shima.

*Rhaphuma nishidai* Hayashi et Makihara, 1981 (Fig. 1b)

Hayashi, M. & Makihara, H. 1981, Esakia, 17: 196.

HOLOTYPE ♀ (dried): Dobhan/ E. Nepal/ 15. v. 1972/ Y. Nishida.

*Rosalia (Eurybatus) nakanishii* Hayashi et Makihara, 1981 (Fig. 1c)

Hayashi, M. & Makihara, H. 1981, Esakia, 17: 189.

HOLOTYPE ♀ (dried): Bogara/ C. Nepal/ 23. ix. 1971/ A. Nakanishi.

*Strangaliella emotoi* Hayashi et Makihara, 1981

Hayashi, M. & Makihara, H. 1981, Esakia, 17: 186.

HOLOTYPE ♀ (dried): Basantapur/ E. Nepal/ 29. iv. 1972/ J. Emoto.

## Chrysomelidae

*Amphimela subgeminata* Kimoto, 2001 (Fig. 1d)

Kimoto, S. 2001, Bull. Kitakyushu Mus. Nat. Hist., 20: 51.

HOLOTYPE ex.(dried): E. NEPAL/ Dharan, Bazar (450m)/ 26°49'N, 87°18'E// June 9, 1972/ H. Makihara leg./ Kyushu Univ. Col.

PARATYPE: 1 ex.(dried).

*Aphthona basantaprica* Kimoto, 2001

Kimoto, S. 2001, Bull. Kitakyushu Mus. Nat. Hist., 20: 52.

HOLOTYPE ex.(dried): E. NEPAL/ Basantapur (2300m)/ 27°07'N, 87°24'E// June 16, 1972/ H. Makihara leg./ Kyushu Univ. Col.

PARATYPE: 1 ex.(dried).

*Aphthona dobangensis* Kimoto, 2001 (Fig. 1e)

Kimoto, S. 2001, Bull. Kitakyushu Mus. Nat. Hist., 20: 52.  
HOLOTYPE ex.(dried): NEPAL/ Dobang Kharka,  
2400m/ 83°24'E. 28°36'N./ Oct. 14. 1971/ A.  
Nakanishi.  
PARATYPES: 2 exs.(dried).

***Basilepta makiharai* Kimoto, 2001**

Kimoto, S. 2001, Bull. Kitakyushu Mus. Nat. Hist., 20: 25.  
HOLOTYPE ex.(dried): E. NEPAL/ Dharan, Bazar  
(450m)/ 26°49'N, 87°18'E// June 8, 1972/ H.  
Makihara leg./ Kyushu Univ. Col.  
PARATYPES: 2 exs.(dried).

***Chrysolina tangalaensis* Kimoto, 2001 (Fig. 1f)**

Kimoto, S. 2001, Bull. Kitakyushu Mus. Nat. Hist., 20: 32.  
HOLOTYPE ex.(dried): E. NEPAL/ Tanga La/  
(4000---4600m)/ 27°40'N, 87°36'E// 6. vii. 1972/  
Jamvang Tenzing/ Kyushu Univ. Col.  
PARATYPE: 1ex.(dried).  
Remarks. The collector of the holotype was  
published as "Juamvang" in the original  
description.

***Colaspoides nepalensis* Kimoto, 2001 (Fig. 1g)**

Kimoto, S. 2001, Bull. Kitakyushu Mus. Nat. Hist., 20: 28.  
HOLOTYPE ex.(dried): NEPAL/ Kathumandu/  
Godavari/ (1600---2000m)/ 27°39'N, 85°21'E// 25.  
vii. 1972/ Pemba Norbu/ Kyushu Univ. Col.  
PARATYPES: 8 exs.(dried).  
Remarks. The collecting date of the holotype was  
published as "25. viii. 1972" in the original  
description.

***Dactylispa platycanthoides* Kimoto, 2001 (Fig. 1h)**

Kimoto, S. 2001, Bull. Kitakyushu Mus. Nat. Hist., 20: 69.  
HOLOTYPE ex.(dried): NEPAL/ Lipshiba, Kharka,  
1900m/ 83°23'E. 28°35'N./ Oct. 30. 1971/ A.  
Nakanishi.  
PARATYPE: 1 ex.(dried).

***Hespera strigiceps* Kimoto, 2001**

Kimoto, S. 2001, Bull. Kitakyushu Mus. Nat. Hist., 20: 57.  
HOLOTYPE ex.(dried): NEPAL/ Bogara, 1700m-  
2200m/ 83°23'E. 28°35'N./ Malaise trap/ Sept.  
20-21. 1971/ A. Nakanishi.

***Luperomorpha nepalica* Kimoto, 2001**

Kimoto, S. 2001, Bull. Kitakyushu Mus. Nat. Hist., 20: 60.  
HOLOTYPE ex.(dried): NEPAL/ Dobang Kharka,  
2400m/ 83°24'E. 28°36'N./ Oct. 27. 1971/ A.  
Nakanishi.

PARATYPES: 5 exs.(dried).

***Manobia shimai* Kimoto, 2001 (Fig. 1i)**

Kimoto, S. 2001, Bull. Kitakyushu Mus. Nat. Hist., 20: 62.  
HOLOTYPE ex.(dried): E. NEPAL/ Dobhan  
(800m)/ 27°19'N, 87°38'E/ May 19. 1972/ H.  
Shima leg./ Kyushu Univ. Col.  
PARATYPES: 4 exs.(dried).

***Monobidia major* Kimoto, 2001**

Kimoto, S. 2001, Bull. Kitakyushu Mus. Nat. Hist., 20: 63.  
HOLOTYPE ex.(dried): E. NEPAL/ Darapani  
(1500m)/ 26°54'N, 87°19'E--/ Tekunara (1600m)/  
26°57'N, 87°21'E// June 11, 1972/ H. Makihara  
leg./ Kyushu Univ. Col.

***Pyrrhalta tatesuji* Kimoto, 2001 (Fig. 1j)**

Kimoto, S. 2001, Bull. Kitakyushu Mus. Nat. Hist., 20: 45.  
HOLOTYPE ex.(dried): NEPAL/ Dobang Kharka,  
2400m/ 83°24'E, 28°36'N/ Oct. 15. 1971/ A.  
Nakanishi.  
PARATYPE: 1 ex.(dried).

***Sastracella collaris* Kimoto, 2001 (Fig. 1k)**

Kimoto, S. 2001, Bull. Kitakyushu Mus. Nat. Hist., 20: 46.  
HOLOTYPE ex.(dried): NEPAL/ Lipshiba, Kharka,  
1900m/ 83°23'E. 28°35'N./ Oct. 30. 1971/ A.  
Nakanishi.  
PARATYPE: 1 ex.(dried).

***Sphaeroderma nakanishii* Kimoto, 2001**

Kimoto, S. 2001, Bull. Kitakyushu Mus. Nat. Hist., 20: 66.  
HOLOTYPE ex.(dried): NEPAL/ Dobang Kharka,  
2400m/ 83°24'E. 28°36'N./ Light trap/ Sept. 23.  
1971/ A. Nakanishi.  
PARATYPE: 1 ex.(dried).

***Stenoluperus emotoi* Kimoto, 2001**

Kimoto, S. 2001, Bull. Kitakyushu Mus. Nat. Hist., 20: 47.  
HOLOTYPE ex.(dried): E. NEPAL/ Shawa  
(2300m)/ 27°29'N, 87°39'E// June 9, 1972/ J.  
Emoto leg./ Kyushu Univ. Col.  
PARATYPES: 2 exs.(dried).

***Stenoluperus thudamensis* Kimoto, 2001 (Fig. 1l)**

Kimoto, S. 2001, Bull. Kitakyushu Mus. Nat. Hist., 20: 49.  
HOLOTYPE ex.(dried): E. NEPAL/ NE of Thudam  
(4000m)/ 27°47'N, 87°36'E/ June 25, 1972/ H.  
Shima leg./ Kyushu Univ. Col.  
PARATYPES: 8 exs.(dried).

***Tegyrius piceus* Kimoto, 2001**

- Kimoto, S. 2001, Bull. Kitakyushu Mus. Nat. Hist., 20: 66.  
 HOLOTYPE ex.(dried): E. NEPAL/ Gupa Pokali  
 (2900m)/ 27°17'N, 87°30'E---/ Gurza (2100m)/  
 27°18'N, 87°33'E// June 23, 1972/ H. Makihara  
 leg./ Kyushu Univ. Col.  
 PARATYPE: 1 ex.(dried).

### Scirtidae

#### *Cyphon sannoides* Yoshitomi, 1996

- Yoshitomi, H. 1996, Jpn. J. Syst. Ent., 2(1): 97.  
 PARATYPES: 10♂♂1♀(dried).

#### *Elodes morimotoi* Yoshitomi et M. Satô, 2003 (Fig. 1m)

- Yoshitomi, H. & Satô, M. 2003, Ent. Rev. Japan, 58(2):  
 195.  
 HOLOTYPE ♂(dried): May 5, 1972/ Y. Nishida  
 leg./ Kyushu Univ. Col.// E. NEPAL/ Basantapur  
 (2300m)/ 27°07'N, 87°24'E.

#### *Elodes nepalensis* Yoshitomi et M. Satô, 2003 (Fig. 1n)

- Yoshitomi, H. & Satô, M. 2003, Ent. Rev. Japan, 58(2):  
 191.  
 HOLOTYPE ♂(dried): E. NEPAL/ Basantapur  
 (2300m)/ 27°07'N, 87°24'E/ May 8, 1972/ Malaise  
 Trap (2)/ Kyushu Univ. Col.  
 PARATYPES: 17♂♂1♀(dried).

### DIPTERA

#### Anthomyzidae

#### *Amygdalops nigrinotum* Sueyoshi et Roháček, 2003

- Sueyoshi, M. & Roháček, J. 2003, Ent. Sci., 6(1): 18.  
 HOLOTYPE ♂(dried): Sueyoshi Park/ Naha City/  
 Okinawa isl./ Ryukyu Japan/ 26. iii. 2000/ H.  
 Nakayama leg.  
 PARATYPES: 5♂♂2♀♀(dried).  
 Remarks. The holotype abdomen and terminalia are  
 stored in glycerol in a plastic microvial pinned  
 below the specimen. The left wing of the holotype  
 is mounted on a slide.

#### *Anthomyza drachma* Sueyoshi et Roháček, 2003

- Sueyoshi, M. & Roháček, J. 2003, Ent. Sci., 6(1): 23.  
 HOLOTYPE ♂(dried): Okami Marshy/ Satomi  
 Vil./ Ibaraki Pref./ Honshu Japan/ 18. v. 2001/ M.  
 Sueyoshi leg.  
 PARATYPES: 19♂♂11♀♀1ex.(dried).  
 Remarks. The holotype abdomen and terminalia are  
 stored in glycerol in a plastic microvial pinned  
 below the specimen. The right wing of the

holotype is mounted on a slide.

#### *Anthomyza flavosterna* Sueyoshi et Roháček, 2003

- Sueyoshi, M. & Roháček, J. 2003, Ent. Sci., 6(1): 25.  
 HOLOTYPE ♂(dried): Shikaribetsu/ Shikaoi  
 Town/ Hokkaido/ Hokkaido Japan/ 9. vii. 2000/ H.  
 Nakayama leg.  
 PARATYPES: 5♂♂16♀♀(dried).  
 Remarks. The holotype abdomen and terminalia are  
 stored in glycerol in a plastic microvial pinned  
 below the specimen. The left wing of the holotype  
 is mounted on a slide.

#### *Anthomyza trifurca* Sueyoshi et Roháček, 2003 (Fig. 2a)

- Sueyoshi, M. & Roháček, J. 2003, Ent. Sci., 6(1): 28.  
 HOLOTYPE ♂(dried): Shikashima/ Fukuoka City/  
 Fukuoka Pref./ Kyushu Japan/ 24. v. 1995/ T.  
 Tachi leg.  
 PARATYPES: 80♂♂87♀♀(dried).  
 Remarks. The holotype abdomen and terminalia are  
 stored in glycerol in a plastic microvial pinned  
 below the specimen. The right wing of the  
 holotype is mounted on a slide.

#### *Ishnomia triarmigera* Sueyoshi et Roháček, 2003

- Sueyoshi, M. & Roháček, J. 2003, Ent. Sci., 6(1): 31.  
 HOLOTYPE ♂(dried): Mt. Mizugaki/ Sutama  
 Town/ Yamanashi Pref./ Honshu Japan/ 12. vi.  
 2001/ M. Sueyoshi leg.  
 PARATYPES: 14♂♂20♀♀(dried).  
 Remarks. The holotype abdomen and terminalia are  
 missing. The right wing of the holotype is  
 mounted on a slide.

### Asteiidae

#### *Asteia gemina* Sueyoshi, 2003 (Fig. 2b)

- Sueyoshi, M. 2003, Eur. J. Entmol., 100: 610.  
 HOLOTYPE ♂(dried): Obuchinuma/ Rokkasho  
 Vil./ Aomori Pref./ Honshu Japan/ 2. viii. 1996/ M.  
 Sueyoshi leg.  
 PARATYPES: 6♂♂7♀♀(dried).  
 Remarks. The holotype abdomen and terminalia are  
 stored in glycerol in a plastic microvial pinned  
 below the specimen. The right wing of the  
 holotype is mounted on a slide.

#### *Asteia longistylus* Sueyoshi, 2003

- Sueyoshi, M. 2003, Eur. J. Entmol., 100: 614.  
 HOLOTYPE ♂(dried): Kitafukurozawa/  
 Ogasawara Vil./ Tokyo/ Chichijima Japan/ 30. xi.

2001/ M. Sueyoshi leg.

PARATYPES: 3♂♂1♀ (dried).

Remarks. The holotype abdomen and terminalia are stored in glycerol in a plastic microvial pinned below the specimen. The right wing of the holotype is mounted on a slide.

***Asteia lunaris* Sueyoshi, 2003**

Sueyoshi, M. 2003, Eur. J. Entomol., 100: 615.

HOLOTYPE ♂(dried): Mt. Enkai/ Yokohama City/ Kanagawa Pref./ Honshu Japan/ 19. ix. 2000/ M. Sueyoshi leg.

PARATYPES: 2♂♂2♀ (dried).

Remarks. The holotype abdomen and terminalia are stored in glycerol in a plastic microvial pinned below the specimen. The right wing of the holotype is mounted on a slide.

***Asteia nigrigena* Sueyoshi, 2003**

Sueyoshi, M. 2003, Eur. J. Entomol., 100: 617.

HOLOTYPE ♂(dried): Mt. Enkai/ Yokohama City/ Kanagawa Pref./ Honshu Japan/ 15. viii. 2002/ M. Sueyoshi leg.

PARATYPES: 4♂♂1♀ (dried).

Remarks. The holotype abdomen and terminalia are stored in glycerol in a plastic microvial pinned below the specimen. The right wing of the holotype is mounted on a slide.

**Calliphoridae**

***Melinda itoi* Kano, 1962**

Kano, R. 1962, Jpn. J. Sanit. Zool., 13: 1.

PARATYPES: 2♂♂(dried).

***Melinda tsukamotoi* Kano, 1962**

Kano, R. 1962, Jpn. J. Sanit. Zool., 13: 4.

PARATYPES: 1♂1♀ (dried).

***Onesia flavisquama* Kurahashi, 1992**

Kurahashi, H. 1992, Jpn. J. Ent., 60(3): 582.

PARATYPES: 2♂♂2♀ (dried).

***Polleniopsis himalayana* Kurahashi, 1992 (Fig. 2c)**

Kurahashi, H. 1992, Jpn. J. Ent., 60(3): 585.

HOLOTYPE ♂ (dried): E. NEPAL/ Thudam (3500m)/ 27°45'N, 87°32'E/ July 4, 1972/ Malaise trap (2)/ Kyushu Univ. Col.

PARATYPES: 7♂♂2♀ (dried).

Remarks. The collector of the holotype was published as "H. Shima & Y. Nishida" in the

original description.

***Polleniopsis nepalica* Kurahashi, 1992**

Kurahashi, H. 1992, Jpn. J. Ent., 60(3): 587.

PARATYPES: 2♂♂1♀ (dried).

***Protocalliphora maruyamensis* Kano et Shinonaga, 1966**

Kano, R. & Shinonaga, S. 1966, Jpn. J. Sanit. Zool., 17: 166.

PARATYPE: 1♂(dried).

**Dolichopodidae**

***Diostracus alticola* Saigusa, 1984**

Saigusa, T. 1984, Bull. Kitakyushu Mus. Nat. Hist., 5: 58.

HOLOTYPE ♂ (dried): E. NEPAL/ Tanga La/ 4300-4600m/ 27°40'N, 87°36'E/ 6. vii. 1972/ H. Shima.

***Diostracus angustipalpis* Saigusa, 1984**

Saigusa, T. 1984, Bull. Kitakyushu Mus. Nat. Hist., 5: 38.

HOLOTYPE ♂ (dried): E. NEPAL/ Salpa La/ 3000-3050/ 29. vii. 1981/ J. Emoto.

***Diostracus auripalpis* Saigusa, 1984**

Saigusa, T. 1984, Bull. Kitakyushu Mus. Nat. Hist., 5: 41.

HOLOTYPE ♂ (dried): E. NEPAL/ Chaksila/ 2730m/ 16. vii. 1981/ J. Emoto.

***Diostracus auripilosus* Saigusa, 1984**

Saigusa, T. 1984, Bull. Kitakyushu Mus. Nat. Hist., 5: 65.

HOLOTYPE ♂(dried): E. NEPAL/ NE of Thudam (4000m)/ 27°47'N, 87°36'E// June 25, 1972/ J. Emoto leg./ Kyushu Univ. Col.

***Diostracus chaetodactylus* Saigusa, 1984 (Fig. 2d)**

Saigusa, T. 1984, Bull. Kitakyushu Mus. Nat. Hist., 5: 37.

HOLOTYPE ♂ (dried): E. NEPAL/ Thudam (3500m)/ 27°45'N, 87°32'E// 29. vi. 1972/ Malaise trap/ Kyushu Univ. Col.

***Diostracus emotoi* Saigusa, 1984**

Saigusa, T. 1984, Bull. Kitakyushu Mus. Nat. Hist., 5: 31.

HOLOTYPE ♂ (dried): E. NEPAL/ Chaksila/ 2800m/ 13. vii. 1981/ J. Emoto.

***Diostracus femoratus* Saigusa, 1984**

Saigusa, T. 1984, Bull. Kitakyushu Mus. Nat. Hist., 5: 42.

HOLOTYPE ♂(dried): E. NEPAL/ Papun (2100m)/ 27°32'N, 87°38'E// July 15, 1972/ H. Shima leg./ Kyushu Univ. Col.

***Diostracus fenestratus* Saigusa, 1984 (Fig. 2e)**

Saigusa, T. 1984, Bull. Kitakyushu Mus. Nat. Hist., 19.

HOLOTYPE ♂ (dried): E. NEPAL/ Chaksila/  
2730m/ 16. vii. 1981/ J. Emoto.

***Diostracus fulvispinatus* Saigusa, 1984**

Saigusa, T. 1984, Bull. Kitakyushu Mus. Nat. Hist., 5: 34.

HOLOTYPE ♂ (dried): E. NEPAL/ Topke Gola  
(3700m)/ 27°38'N, 87°35'E// July 8, 1972/ J.  
Emoto leg./ Kyushu Univ. Col.

***Diostracus gymnoscutellatus* Saigusa, 1984**

Saigusa, T. 1984, Bull. Kitakyushu Mus. Nat. Hist., 5: 64.

HOLOTYPE ♂ (dried): E. NEPAL/ Salpa La/  
2880m/ 29. vii. 1981/ J. Emoto, MT.

***Diostracus impulvillatus* Saigusa, 1984**

Saigusa, T. 1984, Bull. Kitakyushu Mus. Nat. Hist., 5: 33.

HOLOTYPE ♂ (dried): E. NEPAL/ Thurukpa  
(2600m)/ 27°36'N, 87°36'E---/ Topke Gola  
(3700m)/ 27°38'N, 87°35'E// June 12, 1972/ J.  
Emoto leg./ Kyushu Univ. Col.

Remarks. The collector of the holotype was  
published as "H. Shima" in the original  
description.

***Diostracus longicornis* Saigusa, 1984**

Saigusa, T. 1984, Bull. Kitakyushu Mus. Nat. Hist., 5: 67.

HOLOTYPE ♂ (dried): E. NEPAL/ Thudam  
(3500m)/ 27°45'N, 87°32'E---/ Tanga La (4700m)/  
27°40'N, 87°36'E// July 7, 1972/ Y. Nishida leg./  
Kyushu Univ. Col.

***Diostracus longiunguis* Saigusa, 1984**

Saigusa, T. 1984, Bull. Kitakyushu Mus. Nat. Hist., 5: 36.

HOLOTYPE ♂ (dried): E. NEPAL/ Thudam  
(3500m)/ 27°45'N, 87°32'E/ June, 21, 1972/  
Malaise trap (1)/ Kyushu Univ. Col.

***Diostracus magnipalpis* Saigusa, 1984**

Saigusa, T. 1984, Bull. Kitakyushu Mus. Nat. Hist., 5: 45.

HOLOTYPE ♂ (dried): E. NEPAL/ Thudam (3500-  
3800m)/ 27°45'N, 87°31'E---/ 27°46'N, 87°33'E//  
June 24, 1972/ H. Shima leg./ Kyushu Univ. Col.

***Diostracus makiharai* Saigusa, 1984**

Saigusa, T. 1984, Bull. Kitakyushu Mus. Nat. Hist., 5: 49.

HOLOTYPE ♂ (dried): Nepal/ Tank-Penumateng/  
29/vi. 72/ Makihara.

***Diostracus nepalensis* Saigusa, 1984**

Saigusa, T. 1984, Bull. Kitakyushu Mus. Nat. Hist., 5: 62.

HOLOTYPE ♂ (dried): E. NEPAL/ Thudam (3500-

3800m)/ 27°45'N, 87°31'E---/ 27°46'N, 87°33'E//  
June 19, 1972/ H. Shima leg./ Kyushu Univ. Col.

***Diostracus nigrilineatus* Saigusa, 1984**

Saigusa, T. 1984, Bull. Kitakyushu Mus. Nat. Hist., 5: 16.

HOLOTYPE ♂ (dried): E. NEPAL/ Sukhe Khola/  
2050m/ 23. vi. 1981/ J. Emoto.

***Diostracus nigripilosus* Saigusa, 1984**

Saigusa, T. 1984, Bull. Kitakyushu Mus. Nat. Hist., 5: 51.

HOLOTYPE ♂ (dried): E. NEPAL/ Thudam (3500-  
3800m)/ 27°45'N, 87°31'E---/ 27°46'N, 87°33'E//  
June 27, 1972/ H. Shima leg./ Kyushu Univ. Col.

***Diostracus nishidai* Saigusa, 1984**

Saigusa, T. 1984, Bull. Kitakyushu Mus. Nat. Hist., 5: 23.

HOLOTYPE ♂ (dried): E. NEPAL/ Thudam (3500-  
3800m)/ 27°45'N, 87°31'E---/ 27°46'N, 87°33'E//  
June 18, 1972/ Y. Nishida leg./ Kyushu Univ. Col.

***Diostracus parvipunctatus* Saigusa, 1984**

Saigusa, T. 1984, Bull. Kitakyushu Mus. Nat. Hist., 5: 68.

HOLOTYPE ♂ (dried): E. NEPAL/ Thudam  
(3500m)/ 27°45'N, 87°32'E--/ Tanga La (4700m)/  
27°40'N, 87°36'E// 5. vii. 1972/ J. Tenzin.

***Diostracus parvus* Saigusa, 1984**

Saigusa, T. 1984, Bull. Kitakyushu Mus. Nat. Hist., 5: 44.

HOLOTYPE ♂ (dried): E. NEPAL/ Papun (2100m)/  
~Thurukpa/ (2600m)/ 11. June 1972/ J. Emoto leg.

***Diostracus pennilobatus* Saigusa, 1984**

Saigusa, T. 1984, Bull. Kitakyushu Mus. Nat. Hist., 5: 24.

HOLOTYPE ♂ (dried): E. NEPAL/ Salpa La/ 3000-  
2800m/ 23. vii. 1981/ J. Emoto.

***Diostracus pretiosus* Saigusa, 1984**

Saigusa, T. 1984, Bull. Kitakyushu Mus. Nat. Hist., 5: 30.

HOLOTYPE ♂ (dried): E. NEPAL/ Salpa La/ 3000-  
3050m/ 29. vii. 1981/ J. Emoto.

***Diostracus pulchripennis* Saigusa, 1984**

Saigusa, T. 1984, Bull. Kitakyushu Mus. Nat. Hist., 5: 29.

HOLOTYPE ♂ (dried): E. NEPAL/ Salpa La/ 3000-  
3050m/ 29. vii. 1981/ J. Emoto.

***Diostracus quadrisetosus* Saigusa, 1984**

Saigusa, T. 1984, Bull. Kitakyushu Mus. Nat. Hist., 5: 50.

HOLOTYPE ♂ (dried): E. NEPAL/ NE of Thudam  
(4000m)/ 27°47'N, 87°36'E/ 25. vi. 1972/ H.  
Shima.

***Diostracus reticulatus* Saigusa, 1984**

Saigusa, T. 1984, Bull. Kitakyushu Mus. Nat. Hist., 5: 20.

HOLOTYPE ♂ (dried): E. NEPAL/ Chitrey (2420m)/ 27°07'N, 87°24'E/ 16. vi. 1972/ H. Makihara.

***Diostracus rotundicornis* Saigusa, 1984**

Saigusa, T. 1984, Bull. Kitakyushu Mus. Nat. Hist., 5: 70.

HOLOTYPE ♂ (dried): E. NEPAL/ Chiaksila/ 2780m/ 15. vii. 1981/ J. Emoto, LT.

***Diostracus shimai* Saigusa, 1984**

Saigusa, T. 1984, Bull. Kitakyushu Mus. Nat. Hist., 5: 56.

HOLOTYPE ♂ (dried): E. NEPAL/ NE of Thudam (4000m)/ 27°47'N, 87°36'E/ 25. vi. 1972/ H. Shima.

***Diostracus simplicipes* Saigusa, 1984**

Saigusa, T. 1984, Bull. Kitakyushu Mus. Nat. Hist., 5: 43.

HOLOTYPE ♂ (dried): E. NEPAL/ Chiaksila/ 2800m/ 20. vii. 1981/ J. Emoto.

***Diostracus tangalensis* Saigusa, 1984**

Saigusa, T. 1984, Bull. Kitakyushu Mus. Nat. Hist., 5: 54.

HOLOTYPE ♂ (dried): E. NEPAL/ Tanga La/ (4300---4600m)/ 27°40'N, 87°36'E// July 6, 1972/ H. Shima leg./ Kyushu Univ. Col.

***Diostracus umbrinervis* Saigusa, 1984 (Fig. 2f)**

Saigusa, T. 1984, Bull. Kitakyushu Mus. Nat. Hist., 5: 52.

HOLOTYPE ♂ (dried): E. NEPAL/ Salpa La/ 3000-3050m/ 29. vii. 1981/ J. Emoto.

***Diostracus unipunctatus* Saigusa, 1984**

Saigusa, T. 1984, Bull. Kitakyushu Mus. Nat. Hist., 5: 71.

HOLOTYPE ♂ (dried): E. NEPAL/ Thudam (3500-3800m)/ 27°45'N, 87°31'E---/ 27°46'N, 87°33'E// June 27, 1972/ H. Shima leg./ Kyushu Univ. Col.

***Diostracus unisetosus* Saigusa, 1984**

Saigusa, T. 1984, Bull. Kitakyushu Mus. Nat. Hist., 5: 14.

HOLOTYPE ♂ (dried): E. NEPAL/ Sukhe Khola/ 2050m/ 23. vi. 1981/ J. Emoto.

***Diostracus yamamotoi* Masunaga, 2000**

Masunaga, K. 2000, Ent. Sci., 3(4): 676.

HOLOTYPE ♂ (dried): Japan/Shikoku/ Tochikubodani/ Higashiyayama-mura/ Tokushima Pref./ 6. viii. 1996/ K. Masunaga leg.

PARATYPES: 1♂2♀ (dried).

***Diostracus yatai* Masunaga, 2000**

Masunaga, K. 2000, Ent. Sci., 3(4): 679.

HOLOTYPE ♂ (dried): Japan/Honshu/ Hinoemamura/ Fukushima Pref./ 22., vii. 1996/ K. Masunaga leg.

PARATYPES: 53♂♂28♀♀ (dried).

***Medetera flavigenus* Masunaga et Saigusa, 1998**

Masunaga, K. & Saigusa, T. 1998, Ent. Sci., 1(4): 613.

HOLOTYPE ♂ (dried): Japan/Honshu/ Ojiya City/ Niigata Pref./ 1. vii. 1993/ K. Masunaga.

PARATYPES: 80♂♂78♀♀ (dried).

***Medetera gotohorum* Masunaga et Saigusa, 1998**

Masunaga, K. & Saigusa, T. 1998, Ent. Sci., 1(4): 615.

HOLOTYPE ♂ (dried): Japan/Honshu/ Akitdu-cho/ Tanabe City/ Wakayama Pref./ 24. v. 1994/ K. Masunaga leg.

PARATYPES: 75♂♂102♀♀ (dried).

***Medetera luteipes* Masunaga et Saigusa, 1998**

Masunaga, K. & Saigusa, T. 1998, Ent. Sci., 1(4): 616.

HOLOTYPE ♂ (dried): Japan/Honshu/ Fukura, Yuza-machi/ Yamagata Pref./ 3. vii. 1993/ K. Masunaga leg.

PARATYPES: 37♂♂42♀♀ (dried).

***Medetera nakamurai* Masunaga et Saigusa, 1998**

Masunaga, K. & Saigusa, T. 1998, Ent. Sci., 1(4): 617.

HOLOTYPE ♂ (dried): Japan/ Kyushu/ Hisayamamachi/ Fukuoka Pref./ 5. v. 1993/ K. Masunaga leg.

PARATYPES: 153♂♂150♀♀ (dried).

**D r y o m y z i d a e**

***Paradryomyza orientalis* Ozerov et Sueyoshi, 2001**

(Fig. 2g)

Ozerov, A. L. & Sueyoshi, M. 2001, Studia Dipter., 8(2): 564.

HOLOTYPE ♂ (dried): Suchilanchi/ Hoping xiang/ Taichung xian/ Taiwan ROC/ 25. xi. 1997/ M. Sueyoshi leg.

PARATYPES: 4♂♂9♀♀ (dried).

Remarks. The holotype abdomen and terminalia are stored in glycerol in a plastic microvial pinned below the specimen. The right wing of the holotype is mounted on a slide.

***Paradryomyza steyskali* Ozerov et Sueyoshi, 2001**

Ozerov, A. L. & Sueyoshi, M. 2001, Studia Dipter., 8(2): 567.

HOLOTYPE ♂ (dried): NEPAL/ Dobang Kharka,



2400m/ 83°24'E. 28°36'N/ Oct. 20. 1971/ A. Nakanishi.

PARATYPES: 4♂♂2♀♀(dried).

Remarks. The holotype abdomen and terminalia are stored in glycerol in a plastic microvial pinned below the specimen. The right wing of the holotype is mounted on a slide.

#### Fanniidae

##### *Fannia alta* Nishida, 1991

Nishida, K. 1991, Jpn. J. Ent., 59(1): 91.

HOLOTYPE ♂(dried): NEPAL/ Thudam-Tanga La/ (4700m)/ 5 Jul. 1972/ Coll. Shima.

##### *Fannia ampla* Nishida, 1994

Nishida, K. 1994, Jpn. J. Sanit. Zool., 45, Suppl.: 83.

HOLOTYPE ♂(dried): E. NEPAL/ Thudam (3500m)/ 27°45'N, 87°32'E/ June 23, 1972/ Malaise Trap (2)/ Kyushu Univ. Coll.

PARATYPES: 10♂♂(dried).

##### *Fannia angusta* Nishida, 1994

Nishida, K. 1994, Jpn. J. Sanit. Zool., 45, Suppl.: 87.

PARATYPES: 3♂♂(dried).

##### *Fannia densa* Nishida, 1994 (Fig. 2h)

Nishida, K. 1994, Jpn. J. Sanit. Zool., 45, Suppl.: 89.

HOLOTYPE ♂(dried): E. NEPAL/ Thudam (3500m)/ 27°45'N, 87°32'E/ June 21-30. 1972/ Malaise trap/ Kyushu Univ. Coll.

PARATYPES: 4♂♂(dried).

##### *Fannia himalayana* Nishida, 1991

Nishida, K. 1991, Jpn. J. Ent., 59(1): 93.

HOLOTYPE ♂(dried): NEPAL/ Thudam (3500m)/ 8 Jul. 1972/ Coll. Shima et al.

PARATYPE: 1♂(dried).

Remarks. The forelegs of the holotype are stored in glycerol in two glass microvials pinned below the specimen.

##### *Fannia nepalensis* Nishida, 1991

Nishida, K. 1991, Jpn. J. Ent., 59(1): 87.

HOLOTYPE ♂(dried): NEPAL/ Thudam (3500m)/ 24 June 1972/ Coll. Emoto.

PARATYPES: 23♂♂(dried).

#### Muscidae

##### *Drymeia makiharai* Shinonaga, 1994

Shinonaga, S. & Singh, M. M. 1994, Jpn. J. Sanit. Zool., 45, Suppl.: 138.

HOLOTYPE ♂(dried): E. NEPAL/ Thudam (3500m)/ 27°45'N, 87°32'E// June 24, 1972/ H. Shima leg./ Kyushu Univ. Col.

##### *Drymeia shimai* Shinonaga, 1994

Shinonaga, S. & Singh, M. M. 1994, Jpn. J. Sanit. Zool., 45, Suppl.: 139.

HOLOTYPE ♂(dried): E. NEPAL/ Thudam (3500m)/ 27°45'N, 87°32'E/ July 1-4. 1972/ Malaise trap/ Kyushu Univ. Coll.

PARATYPES: 8♂♂(dried).

Remarks. The collecting date of the holotype was published as "1-4. May 1972" in the original description.

##### *Helina nepalica* Shinonaga, 1994

Shinonaga, S. & Singh, M. M. 1994, Jpn. J. Sanit. Zool., 45, Suppl.: 171.

HOLOTYPE ♂(dried): E. NEPAL/ Thudam (3500m)/ 27°45'N, 87°32'E/ June 21-30. 1972/ Malaise trap/ Kyushu Univ. Coll.

##### *Helina spinidorsata* Shinonaga, 1994 (Fig. 2i)

Shinonaga, S. & Singh, M. M. 1994, Jpn. J. Sanit. Zool., 45, Suppl.: 173.

HOLOTYPE ♂(dried): E. NEPAL/ Thudam (3500m)/ 27°45'N, 87°32'E/ June 21-30. 1972/ Malaise trap/ Kyushu Univ. Coll.

##### *Hydrotaea gandakiana* Shinonaga, 1994

Shinonaga, S. & Singh, M. M. 1994, Jpn. J. Sanit. Zool., 45, Suppl.: 129.

PARATYPE: 1♂(dried).

##### *Phaonia kaala* Shinonaga, 1994

Shinonaga, S. & Singh, M. M. 1994, Jpn. J. Sanit. Zool., 45, Suppl.: 164.

PARATYPE: 1♂(dried).

##### *Phaonia khumbuensis* Shinonaga, 1994

Shinonaga, S. & Singh, M. M. 1994, Jpn. J. Sanit. Zool., 45, Suppl.: 165.

PARATYPES: 30♂♂10♀♀(dried).

##### *Phaonia nakanishii* Shinonaga, 1994

Shinonaga, S. & Singh, M. M. 1994, Jpn. J. Sanit. Zool., 45, Suppl.: 162.

HOLOTYPE ♂(dried): E. NEPAL/ Thudam (3500m)/ 27°45'N, 87°32'E/ June 21-30. 1972/

Malaise trap/ Kyushu Univ. Coll.

PARATYPES: 18♂♂7♀♀ (dried).

Remarks. The collecting date of the holotype was published as "21-30. July 1972" in the original description.

***Phaonia protrusa* Shinonaga, 1994**

Shinonaga, S. & Singh, M. M. 1994, Jpn. J. Sanit. Zool., 45, Suppl.: 160.

HOLOTYPE ♂ (dried): E. NEPAL/ Thudam (3500m)/ 27°45'N, 87°32'E/ June 21-30. 1972/ June 25, 1972/ H. Shima leg./ Kyushu Univ. Col.

PARATYPES: 11♂♂18♀♀ (dried).

***Phaonia thudamensis* Shinonaga, 1994**

Shinonaga, S. & Singh, M. M. 1994, Jpn. J. Sanit. Zool., 45, Suppl.: 167.

HOLOTYPE ♂ (dried): E. NEPAL/ Thudam (3500m)/ 27°45'N, 87°32'E/ June 21-30. 1972/ Malaise trap/ Kyushu Univ. Coll.

PARATYPES: 18♂♂18♀♀ (dried).

***Thricops ilamensis* Shinonaga, 1994**

Shinonaga, S. & Singh, M. M. 1994, Jpn. J. Sanit. Zool., 45, Suppl.: 136.

HOLOTYPE ♂ (dried): E. NEPAL/ Thudam (3500m)/ 27°45'N, 87°32'E/ July 1-4. 1972/ Malaise trap/ Kyushu Univ. Coll.

Remarks. The head, the thorax, two wings and two legs of the holotype are glued on two pieces of paper. The abdomen is stored in glycerol in a plastic microvial pinned below the papers.

***Thricops thudamensis* Shinonaga, 1994**

Shinonaga, S. & Singh, M. M. 1994, Jpn. J. Sanit. Zool., 45, Suppl.: 134.

HOLOTYPE ♂ (dried): E. NEPAL/ Thudam (3500m)/ 27°45'N, 87°32'E/ June 21-30. 1972/ June 25, 1972/ H. Shima leg./ Kyushu Univ. Col.

PARATYPES: 2♂♂ (dried).

Remarks. The holotype abdomen and terminalia are stored in glycerol in a plastic microvial pinned below the specimen.

**Pallopteridae**

***Temnosira simillima* Merz et Sueyoshi, 2002 (Fig. 2j)**

Merz, B. & Sueyoshi, M. 2002, Studia Dipter., 9(1): 298.

HOLOTYPE ♂ (dried): Mt. Kongo/ Chihayaakasaka Vil./ Osaka Pref./ Honshu Japan/ 24. vii. 1995/ M. Sueyoshi leg.

PARATYPES: 6♂♂6♀♀ (dried).

Remarks. The holotype abdomen and terminalia are stored in glycerol in a glass microvial pinned below the specimen.

**Periscelididae**

***Cyamops hotei* Sueyoshi, 2004 (Fig. 2k)**

Sueyoshi, M. & Mathis, W. N. 2004, Proc. Entmol. Soc. Wash. 106(1): 75.

HOLOTYPE ♂ (dried): 埼玉県入間郡/ 越生町/ (比企南丘陵) /11. v. 1993/ 玉木長寿.

PARATYPES: 1♂1♀ (dried).

Remarks. The holotype abdomen and terminalia are stored in glycerol in a plastic microvial pinned below the specimen. The right wing of the holotype is mounted on a slide. The holotype data of the label was written in Japanese and translated as "South hill of Hiki, Ogose Town, Iruma, Saitama Pref., 11. v. 1993, N. Tamaki leg." in the original description.

**Phoridae**

***Gymnophora enigmata* Brown, 1989 (Fig. 2l)**

Brown, B. V. 1989, Can. J. Zool., 67(10): 2546.

HOLOTYPE ♂ (dried): E. NEPAL/ Basantapur (2300m)/ 27°07'N, 87°24'E/ May 6-10. 1972/ Malaise trap./ Kyushu Univ. Coll.

Remarks. The holotype terminalia are stored in glycerol in a plastic microvial pinned below the specimen.

***Gymnophora nepalensis* Brown, 1989**

Brown, B. V. 1989, Can. J. Zool., 67(10): 2547.

HOLOTYPE ♂ (dried): NEPAL/ Dobang Kharka, 2400m/ 83°24'E, 28°36'N/ Sept. 25. 1971/ A. Nakanishi.

PARATYPES: 23♂♂ (dried).

Remarks. The holotype terminalia are stored in glycerol in a plastic microvial pinned below the specimen.

***Gymnophora platipalpis* Brown, 1989**

Brown, B. V. 1989, Can. J. Zool., 67(10): 2547.

HOLOTYPE ♂ (dried): E. NEPAL/ Thudam (3500m)/ 27°45'N, 87°32'E/ June 21-30. 1972/ Malaise trap./ Kyushu Univ. Coll.

***Gymnophora quadriseta* Brown, 1989**

Brown, B. V. 1989, Can. J. Zool., 67(10): 2546.

HOLOTYPE ♂ (dried): NEPAL/ Dobang Kharka, 2400m/ 83°24'E, 28°36'N/ Oct. 20. 1971/ A. Nakanishi.

PARATYPE: 1♂ (dried).

***Gymnophora setulata* Brown, 1989**

Brown, B. V. 1989, Can. J. Zool., 67(10): 2551.

HOLOTYPE ♂ (dried): NEPAL/ Dobang Kharka, 2400m/ 83°24'E, 28°36'N/ Malaise trap/ Oct. 26-28. 1971/ A. Nakanishi.

PARATYPE: 1♂ (dried).

Remarks. The holotype terminalia are stored in glycerol in a plastic microvial pinned below the specimen.

***Hypocera anularia* Nakayama et Shima, 2001**

Nakayama, H. & Shima, H. 2001, Ent. Sci., 4(3): 380.

HOLOTYPE ♂ (dried): LAKE ON-NETO/ ASHOROCHO/ TOKACHI SHICHO/ HOKKAIDO, JAPAN/ 10TH AUGUST 1999/ H. NAKAYAMA LEG

PARATYPES: 25♂♂41♀♀ (dried).

***Peromitra fimbriata* Nakayama et Shima, 2002 (Fig. 2m)**

Nakayama, H. & Shima, H. 2002, Ent. Sci., 5(1): 67.

HOLOTYPE ♂ (dried): Mt. Hakuchōzan/ Izumimura (1300m)/ Kumamoto Pref./ 29. VII. 1977/ Sonoko Ōhara.

PARATYPE: 1♂ (dried).

***Peromitra hikosana* Nakayama et Shima, 2002**

Nakayama, H. & Shima, H. 2002, Ent. Sci., 5(1): 72.

HOLOTYPE ♂ (dried): Mt. Hikosan/ Fukuoka, JAPAN/ 23. vii. 1970/ K. Takeno leg./ (Malaise Trap).

PARATYPES: 30♂♂6♀♀ (dried).

***Peromitra pilosa* Nakayama et Shima, 2002**

Nakayama, H. & Shima, H. 2002, Ent. Sci., 5(1): 70.

HOLOTYPE ♂ (dried): Mt. Mukabakiyama/ Nobeoka City/ Miyazaki Pref./ 3. vi. 1979/ Tadao Gotō.

PARATYPES: 21♂♂10♀♀ (dried).

***Peromitra purpurea* Nakayama et Shima, 2002**

Nakayama, H. & Shima, H. 2002, Ent. Sci., 5(1): 68.

HOLOTYPE ♂ (dried): SHIKARIBETSU-KO/ SHIKAOI CHO/ HOKKAIDO, JAPAN/ 7-11TH JULY 2000/ H. NAKAYAMA LEG.

PARATYPES: 6♂♂2♀♀ (dried).

***Stichillus cylindratus* Nakayama et Shima, 2004**

Nakayama, H. & Shima, H. 2004, Ent. Sci., 7(1): 90.

HOLOTYPE ♂ (dried): Mt. Hikosan/ Fukuoka, JAPAN/ 25. vii. 1970/ K. Takeno leg./ (Malaise Trap).

PARATYPES: 1♂1♀ (dried).

**Psilidae**

***Chyliza emotoi* Iwasa, 1996**

Iwasa, M. 1996, Studia Dipter., 3(2): 206.

HOLOTYPE ♂ (dried): E. Nepal/ Topke Gola (3700m)/ 27°38'N, 87°35'E---/ Thurukpa (2600m)/ 27°36'N, 87°36'E.

PARATYPES: 2♀♀ (dried).

Remarks. The collecting date and the collector of the holotype were published as "12 June 1972 and J. Emoto" respectively in the original description.

***Chyliza himalayana* Iwasa, 1996**

Iwasa, M. 1996, Studia Dipter., 3(2): 204.

HOLOTYPE ♂ (dried): E. Nepal/ Shawa (2300m)/ 27°29'N, 87°39'E/ June 9, 1972/ J. Emoto leg./ Kyushu Univ. Col.

PARATYPE: 1♀ (dried).

***Chyliza nakanishii* Iwasa, 1996**

Iwasa, M. 1996, Studia Dipter., 3(2): 203.

HOLOTYPE ♂ (dried): Nepal/ Bogara, 1700-2200m/ 83°23'E, 28°35'N/ Sept. 20, 1971/ A. Nakanishi.

PARATYPES: 6♀♀ (dried).

***Chyliza nepalensis* Iwasa, 1996**

Iwasa, M. 1996, Studia Dipter., 3(2): 201.

HOLOTYPE ♂ (dried): Nepal/ Bogara, 1700-2200m/ 83°23'E, 26°35'N/ Sept. 19, 1971/ A. Nakanishi.

PARATYPES: 2♂♂2♀♀ (dried).

***Chyliza tenuis* Iwasa, 1996**

Iwasa, M. 1996, Studia Dipter., 3(2): 205.

HOLOTYPE ♂ (dried): E. Nepal/ Shawa (2300m)/ 27°29'N, 87°39'E/ June 9, 1972/ J. Emoto leg./ Kyushu Univ. Col.

***Loxocera (Loxocera) manifestaria* Iwasa, 1993**

Iwasa, M. 1993, Jpn. J. Ent., 61(2): 248.

HOLOTYPE ♂ (dried): Nepal/ Lipshiba Kharka, 1900m/ 83°23'E, 28°35'N/ Oct. 30, 1971/ A. Nakanishi.

PARATYPES: 7♂♂7♀♀ (dried).

***Psila (Freyopsila) asiatica* Iwasa, 1994**

Iwasa, M. 1994, Jpn. J. Ent., 62(4): 696.

HOLOTYPE ♂ (dried): E. Nepal/ Thudam (3500m)/  
24°45'N, 87°32'E/ June 21-30, 1972/ Malaise trap/  
Kyushu Univ. Coll.

PARATYPES: 41♂♂43♀♀ (dried).

***Psila (Freyopsila) luteifrons* Iwasa, 1994**

Iwasa, M. 1994, Jpn. J. Ent., 62(4): 698.

HOLOTYPE ♂ (dried): E. Nepal/ Basantapur  
(2300m)/ 27°06'N, 87°23'E---/ 27°08'N, 87°26'E/  
April 26, 1972/ J. Emoto leg./ Kyushu Univ. Col.

PARATYPES: 5♀♀ (dried).

***Psila (Freyopsila) subtilis* Iwasa, 1994**

Iwasa, M. 1994, Jpn. J. Ent., 62(4): 697.

HOLOTYPE ♀ (dried): Nepal/ Dobang Kharka,  
2400m/ 83°24'E, 28°36'N/ Malaise trap/ Sept.  
24-25 1971/ A. Nakanishi.

PARATYPES: 12♀♀ (dried).

***Psila (Psila) himalayensis* Iwasa, 1994**

Iwasa, M. 1994, Jpn. J. Ent., 62(4): 693.

HOLOTYPE ♂ (dried): E. Nepal/ Topke Gola  
(3700m)/ 27°38'N, 87°35'E---/ Thurukpa (2600m)/  
27°36'N, 87°36'E// June 12 1972/ J. Emoto leg./  
Kyushu Univ. Col.

PARATYPES: 24♂♂19♀♀ (dried).

***Psila (Psila) japonica* Iwasa, 1991**

Iwasa, M. 1991, Jpn. J. Ent., 59(2): 397.

HOLOTYPE ♂ (dried): Honshu/ Kanayama/  
Yamanashi/ 28. V. 1975/ Malaise T. Kyushu Univ.

PARATYPES: 4♂♂2♀♀ (dried).

***Psila (Psila) notata* Iwasa, 1994**

Iwasa, M. 1994, Jpn. J. Ent., 62(4): 694.

HOLOTYPE ♀ (dried): Nepal/ Dobang Kharka,  
2400m/ 83°24'E, 28°36'N/ Malaise trap/ Oct.  
10-14. 1971/ A. Nakanishi.

PARATYPE: 1♀♀ (dried).

**Rhinophoridae**

***Oplisa japonica* Pape et Kurahashi, 1994 (Fig. 2n)**

Pape, T. & Kurahashi, H. 1994, Jpn. J. Ent., 62(3): 477.

HOLOTYPE ♂ (dried): KYUSHU/ Fukuoka/  
Aburayama/ 8. x. 1988/ H. Shima.

PARATYPES: 13♂♂15♀♀ (dried).

**Sarcophagidae**

***Primorya ussuriensis* Pape, 1998 (Fig. 2o)**

Pape, T. 1998, Syst. Ent., 23 (2): 187.

HOLOTYPE ♂ (dried): USSR: Primor'ye/  
Ussuriysk Reserve/ west border, 208-/ 430m, 26.  
vii. 1990/ T. Saigusa leg.

Remarks. The holotype terminalia are glued on a  
piece of paper.

**Sciomyzidae**

***Dichetophora japonica* Sueyoshi, 2001 (Fig. 3a)**

Sueyoshi, M. 2001, Ent. Sci., 4(4): 491.

HOLOTYPE ♂ (dried): Yunosawa pass/ Yamato  
vil./ Yamanashi Pref./ Honshu Japan/ 5. vi. 1998/  
T. Tachi leg.

PARATYPES: 12♂♂40♀♀ (dried).

Remarks. The holotype abdomen and terminalia are  
stored in glycerol in a plastic microvial pinned  
below the specimen. The left wing of the holotype  
is mounted on a slide.

***Dichetophora kumadori* Sueyoshi, 2001**

Sueyoshi, M. 2001, Ent. Sci., 4(4): 494.

HOLOTYPE ♂ (dried): Kawarabou/ Oohazama  
town/ Iwate Pref./ Honshu Japan/ 9. viii. 1996/ M.  
Sueyoshi leg.

PARATYPES: 4♂♂11♀♀ (dried).

Remarks. The holotype abdomen is stored in  
glycerol in a plastic microvial pinned below the  
specimen. The left wing of the holotype is  
mounted on a slide.

***Pherbellia tricolor* Sueyoshi, 2001**

Sueyoshi, M. 2001, Ent. Sci., 4(4): 489.

HOLOTYPE ♂ (dried): Yunosawa pass/ Yamato  
vil./ Yamanashi Pref./ Honshu Japan/ 5. vi.  
1998/ T. Tachi leg.

PARATYPES: 3♂♂3♀♀ (dried)

Remarks. The holotype abdomen and terminalia are  
stored in glycerol in a plastic microvial pinned  
below the specimen. The left wing of the holotype  
is mounted on a slide.

**Sepsidae**

***Dicranosepsis maculosa* Iwasa, 1984 (Fig. 3b)**

Iwasa, M. 1984, Kontyû, 52 (1): 85.

HOLOTYPE ♂ (dried): E. NEPAL/ Tank (1900m)/  
27°33'N, 87°36'E---/ Penmaten (2600m)/ 27°36'N,

87°36'E// June 29, 1972/ H. Makihara leg./  
Kyushu Univ. Col.

PARATYPES: 1♂7♀ (dried).

***Dicranosepsis olfactoria* Iwasa, 1984**

Iwasa, M. 1984, *Kontyû*, 52 (1): 84.

HOLOTYPE ♂ (dried): NEPAL/ Bogara, 1700m-  
2200m/ 83°23'E, 28°35'N/ Sept. 19. 1971/ A.  
Nakanishi.

PARATYPES: 3♂♂ (dried).

***Dicranosepsis parva* Iwasa, 1984**

Iwasa, M. 1984, *Kontyû*, 52 (1): 88.

HOLOTYPE ♂ (dried): NEPAL/ Darapani  
(1400m)// [NEPAL]/ Shibang (1570m)/ --  
Dharbang (1000m)/ 2. xi. 1971/ A. Nakanishi.

PARATYPES: 3♂♂ (dried).

***Dicranosepsis stabilis* Iwasa, 1984**

Iwasa, M. 1984, *Kontyû*, 52 (1): 86.

HOLOTYPE ♂ (dried): NEPAL/ Dobang Kharka,  
2400m/ 83°24'E, 28°36'N/ Sept. 25. 1971/ A.  
Nakanishi.

PARATYPES: 9♂♂ (dried).

***Sepsis alta* Iwasa, 1984 (Fig. 3c)**

Iwasa, M. 1984, *Kontyû*, 52 (1): 80.

HOLOTYPE ♂ (dried): E. NEPAL/ Tanga La/  
(4,000---4,600m)/ 27°40'N, 87°36'E// July 6, 1972/  
H. Makihara leg./ Kyushu Univ. Col.

PARATYPES: 1♂1♀ (dried).

***Sepsis nakanishii* Iwasa, 1984**

Iwasa, M. 1984, *Kontyû*, 52 (1): 78.

HOLOTYPE ♂ (dried): NEPAL/ Dobang Kharka,  
2400m/ 83°24'E, 28°36'N/ Oct. 22. 1971/ A.  
Nakanishi.

PARATYPES: 56♂♂29♀♀ (dried).

***Themira makiharai* Iwasa, 1984**

Iwasa, M. 1984, *Kontyû*, 52 (1): 75.

HOLOTYPE ♂ (dried): E. NEPAL/ Penmaten  
(2,600m)/ 27°36'N, 87°36'E---/ Topke Gola  
(3,700m)/ 27°38'N, 87°35'E// June 30, 1972/ H.  
Makihara leg./ Kyushu Univ. Col.

PARATYPES: 5♂♂2♀♀ (dried).

***Themira saigusai* Iwasa, 1981**

Iwasa, M. 1984, *Kontyû*, 49(1): 49.

HOLOTYPE ♂ (dried): HOKKAIDO/ Kurodake/  
Daisetsuzan/ 13 Aug. 1967/ T. Saigusa.

PARATYPES: 2♂♂2♀♀ (dried).

***Themira shimai* Iwasa, 1984**

Iwasa, M. 1984, *Kontyû*, 52 (1): 73.

HOLOTYPE ♂ (dried): E. NEPAL/ Thudam  
(3500m)/ 27°45'N, 87°32'E---/ Tanga La (4,700m)/  
27°40'N, 87°36'E// July 5, 1972/ H. Shima leg./  
Kyushu Univ. Col.

PARATYPES: 17♂♂17♀♀ (dried).

**Sphaeroceridae**

***Lotophila pallida nepalensis* Hayashi, 1991**

Hayashi, T. 1991, *Jpn. J. Sanit. Zool.*, 42(1): 11.

HOLOTYPE ♂ (dried): NEPAL/ Dobang Kharka,  
2400m/ 83°24'E, 28°36'N/ Oct. 23. 1971/ A.  
Nakanishi.

PARATYPE: 1♀ (dried).

***Paralimosina albipes* Hayashi, 1994 (Fig. 3d)**

Hayashi, T. 1994, *Jpn. J. Sanit. Zool.*, 45, Suppl.: 33.

HOLOTYPE ♂ (dried): NEPAL/ Dobang Kharka,  
2400m/ 83°24'E, 28°36'N/ Oct. 9. 1971/ A.  
Nakanishi.

PARATYPES: 1♂2♀♀ (dried).

***Paralimosina megaloba* Hayashi, 1994**

Hayashi, T. 1994, *Jpn. J. Sanit. Zool.*, 45, Suppl.: 46.

PARATYPES: 10♂♂17♀♀ (dried).

***Paralimosina similis* Hayashi, 1994**

Hayashi, T. 1994, *Jpn. J. Sanit. Zool.*, 45, Suppl.: 50.

PARATYPE: 1♀ (dried).

**Tachinidae**

***Actia ampla* Tachi et Shima, 1998**

Tachi, T. & Shima, H. 1998, *Ent. Sci.*, 1(3): 449.

HOLOTYPE ♂ (dried): KINKI/ Nara/ Kitamata-  
rindo/ 26. vii. 1995/ T. Tachi.

PARATYPES: 1♂2♀♀ (dried).

Remarks. The holotype abdomen and terminalia are  
stored in glycerol in a plastic microvial pinned  
below the specimen.

***Actia clavula* Tachi et Shima, 1998**

Tachi, T. & Shima, H. 1998, *Ent. Sci.*, 1(3): 457.

HOLOTYPE ♂ (dried): HONSHU/ Gifu/  
Kamitakara vil./ Shinhodaka/ Malaise trap/ 18. viii.  
1997/ T. Tachi.

PARATYPES: 7♂♂4♀♀ (dried).

***Actia nigra* Shima, 1970**

Shima, H. 1970, J. Fac. Agric. Kyushu Univ., 16(2): 184.

PARATYPES: 2♂♂1♀ (dried).

***Actia solida* Tachi et Shima, 1998**

Tachi, T. &amp; Shima, H. 1998, Ent. Sci., 1(3): 447.

HOLOTYPE ♂(dried): HOKKAIDO/ Ashoro-cho/  
Kamitoshibetu/ 17. viii. 1996/ T. Tachi.

PARATYPES: 7♂♂8♀♀ (dried).

Remarks. The holotype terminalia are stored in glycerol in a plastic microvial pinned below the specimen. The left middleleg of the holotype is glued on a pin.

***Actinochaetopteryx argentifera* Shima, 1988**

Shima, H. 1988, Bull. Kitakyushu Mus. Nat. Hist., 8: 9.

PARATYPE: 1♂(dried).

***Actinochaetopteryx setifacies* Shima, 1988**

Shima, H. 1988, Bull. Kitakyushu Mus. Nat. Hist., 8: 5.

PARATYPE: 1♀(dried).

***Anechuromyia nigrescens* Mesnil et Shima, 1979**

Mesnil, L. P. &amp; Shima, H. 1979, Kontyû, 47(4): 483.

HOLOTYPE ♂ (dried): HONSHU/ Yamakita-  
machi/ Kanagawa Pref./ iv. 1977 em./ T. Sasamoto  
leg.

PARATYPES: 2♂♂2♀♀ (dried).

Remarks. The holotype puparium is glued on a piece of paper pinned below the specimen.

***Aporeomyia antennalis* Pape et Shima, 1993 (Fig. 3e)**

Pape, T. &amp; Shima, H. 1993, Tijdschr. Ent., 136: 77.

HOLOTYPE ♂(dried): Mindanao/ Mt. Apo, Agko-  
Lake Binado/ 1350-2300m alt.// 5. viii, 1978/  
Nakanishi, A. & Yata., O. leg.

PARATYPE: 1♂(dried).

***Belida longicornis* Shima, 1979**

Shima, H. 1979, Kontyû, 47(2): 135.

HOLOTYPE ♂(dried): HOKKAIDO/ Mt. Rausu/  
(200-900m.)/ 4. viii. 1967/ H. Shima.

PARATYPES: 3♂♂2♀♀ (dried).

***Blondelia breviceps* Shima, 1984**

Shima, H. 1984, Kontyû, 52(4): 544.

HOLOTYPE ♂(dried): KYUSHU/ Naidaijin/ (650-  
800m.)/ Kumamoto/ v. 8. 1967/ H. Shima.

PARATYPES: 7♂♂12♀♀ (dried).

***Calliethilla caerulea* Shima, 1979**

Shima, H. 1984, Bull. Natn. Sci. Mus., Ser. A (Zool.), 5(2):

148.

PARATYPES: 1♂2♀♀ (dried).

***Campylocheta abdominalis* Shima, 1985**

Shima, H. 1985, Syst. Ent., 10: 110.

PARATYPES: 4♀♀ (dried).

***Campylocheta argenteiceps* Shima, 1985**

Shima, H. 1985, Syst. Ent., 10: 114.

HOLOTYPE ♂ (dried): HONSHU/ Kawaragoya/  
Shigakogen/ Nagano Pref.// 1975. v. 30./ A.  
Nakanishi/ & J. Emoto/ (Malaise trap).

PARATYPE: 1♀ (dried).

Remarks. The right hindleg of the holotype is glued on a pin. The right middleleg of the holotype is missing.

***Campylocheta bisetosa* Shima, 1985**

Shima, H. 1985, Syst. Ent., 10: 115.

PARATYPES: 2♂♂3♀♀ (dried).

***Campylocheta flaviceps* Shima, 1985**

Shima, H. 1985, Syst. Ent., 10: 112.

PARATYPES: 2♂♂1♀ (dried).

***Campylocheta grisea* Shima, 1985**

Shima, H. 1985, Syst. Ent., 10: 113.

HOLOTYPE ♂ (dried): KYUSHU/ Mt. Kuju/  
Amagaike/ 10. iv. 1959// 10. iv. 1959/ Y.  
Miyatake.

Remarks. The forelegs, the left middleleg and the tip of the right wing are glued on a piece of plastic sheet pinned below the specimen.

***Campylocheta hirticeps* Shima, 1985**

Shima, H. 1985, Syst. Ent., 10: 116.

PARATYPES: 2♂♂2♀♀ (dried).

***Campylocheta magnicauda* Shima, 1988**

Shima, H. 1988, Bull. Kitakyushu Mus. Nat. Hist., 8: 21.

HOLOTYPE ♂ (dried): TAIWAN/ Tsiufeng/ 28  
May 1972/ R. Kano.

PARATYPES: 2♂♂1♀ (dried).

Remarks. The collecting date of the holotype was published as "29. v. 1972" in the original description.

***Carcelia* (s. str.) *candidae* Shima, 1981**

Schaefer P. W. &amp; Shima, H. 1981, Kontyû, 49(2): 372.

HOLOTYPE ♂(dried): ex/ *Leucoma candida* //  
Japan Hokkaido/ Makomanai/ 4. VII. 1975/ P.  
Schaefer.

PARATYPE: 1 ♀ (dried).

Remarks. The holotype puparium is pinned below the specimen.

***Carceliopsis matsukarehae* Shima, 1969**

Shima, H. 1969, Kontyû, 37(2): 233.

PARATYPES: 23 ♂♂ 37 ♀♀ (dried).

***Cavillatrix antennalis* Shima, 1996**

Shima, H. 1996, Bull. Grad. Schl. Soc. Cult. Stud., Kyushu Univ., 2 : 142.

PARATYPES: 2 ♀♀ (dried).

***Cavillatrix curtichela* Shima, 1996**

Shima, H. 1996, Bull. Grad. Schl. Soc. Cult. Stud., Kyushu Univ., 2 : 143.

PARATYPES: 1 ♂ 4 ♀♀ (dried).

***Cavillatrix fijiana* Shima, 1996**

Shima, H. 1996, Bull. Grad. Schl. Soc. Cult. Stud., Kyushu Univ., 2 : 143.

PARATYPES: 2 ♀♀ (dried).

***Cavillatrix gymnops* Shima, 1996**

Shima, H. 1996, Bull. Grad. Schl. Soc. Cult. Stud., Kyushu Univ., 2 : 139.

HOLOTYPE ♂ (dried): KYUSHU/ Fukuoka/ Aburayama/ 15. viii. 1989/ H. Shima.

PARATYPES: 13 ♂♂ 2 ♀♀ (dried).

***Ceromya cothurnata* Tachi et Shima, 2000**

Tachi, T. & Shima, H. 2000, Beitr. Ent., 50(1): 145.

HOLOTYPE ♂ (dried): HOKKAIDO/ Ashoro-cho/ Kamitoshibetu/ 16. viii. 1996/ T. Tachi.

PARATYPES: 1 ♂ 7 ♀♀ (dried).

Remarks. The holotype terminalia are stored in glycerol in a plastic microvial pinned below the specimen.

***Ceromya glaucescens* Tachi et Shima, 2000**

Tachi, T. & Shima, H. 2000, Beitr. Ent., 50(1): 136.

HOLOTYPE ♂ (dried): HONSHU/ Niigata/ Myôkôkôgen-cho/ Sasagamine/ 23. vi. 1996/ T. Tachi.

PARATYPES: 5 ♂♂ (dried).

***Ceromya helvola* Tachi et Shima, 2000 (Fig. 3f)**

Tachi, T. & Shima, H. 2000, Beitr. Ent., 50(1): 140.

HOLOTYPE ♂ (dried): Hokkaido/ Yubaridate/ Sorachi// 15. VII. 1967/ T. Saigusa.

PARATYPES: 10 ♂♂ 13 ♀♀ (dried).

Remarks. The collecting year of the holotype was

published as "1969" in the original description.

***Ceromya kurahashii* Tachi et Shima, 2000**

Tachi, T. & Shima, H. 2000, Beitr. Ent., 50(1): 138.

HOLOTYPE ♂ (dried): Mt. Asamayama/ Nagano Pref./ 11. Aug. 1976/ Col. H. Kurahashi.

PARATYPES: 1 ♂ 1 ♀ (dried).

Remarks. The holotype abdomen is glued on a piece of paper and the terminalia are stored in glycerol in a plastic microvial. They are pinned below the specimen.

***Ceromya luteola* Tachi et Shima, 2000**

Tachi, T. & Shima, H. 2000, Beitr. Ent., 50(1): 147.

HOLOTYPE ♂ (dried): HONSHU/ Yamanashi/ Yamato v./ Yunosawa touge/ 18. vii. 1996/ T. Tachi.

PARATYPES: 4 ♂♂ 4 ♀♀ (dried).

Remarks. The holotype terminalia are stored in glycerol in a plastic microvial pinned below the specimen.

***Ceromya prominula* Tachi et Shima, 2000**

Tachi, T. & Shima, H. 2000, Beitr. Ent., 50(1): 134.

HOLOTYPE ♂ (dried): HONSHU/ Saitama Pref./ Tokorozawa/ Yamaguchi/ 13. vii. 1986 em.// ex Vendrolimus/ undans flaveola/ Mot. クヌギカレハ (L.)/ N. Ishizawa.

PARATYPES: 2 ♂♂ 1 ♀ (dried).

***Ceromya pruinosa* Shima, 1970**

Shima, H. 1970, J. Fac. Agric. Kyushu Univ., 16(2): 188.

PARATYPE: 1 ♂ (dried).

***Chaetexorista ateripalpis* Shima, 1973**

Shima, H. 1973, Sieboldia, 4(3): 147.

HOLOTYPE ♂ (dried): Momiki/ Gokano-sho/ Kumamoto-pref./ 20, VII-1966/ leg. K. Kanmiya.

PARATYPES: 2 ♂♂ 3 ♀♀ (dried).

***Chaetexorista discalis* Shima, 1973**

Shima, H. 1973, Sieboldia, 4(3): 150.

HOLOTYPE ♂ (dried): KYUSHU/ Inunakiyama/ (Fukuoka)/ iv. 25. 1967/ H. Shima.

Remarks. The holotype terminalia are stored in glycerol in a plastic microvial and the left hindleg is wrapped in a small triangle sheet. They are pinned below the specimen.

***Chaetophthalmus argentifrons* Cantrell et Shima, 1991**

Cantrell, B. K. & Shima, H. 1991, J. Aust. Ent. Soc., 30:

57.  
PARATYPES: 1♂1♀ (dried).
- Chaetophthalmus aurifrons* Cantrell et Shima, 1991**  
Cantrell, B. K. & Shima, H. 1991, J. Aust. Ent. Soc., 30:  
52.  
PARATYPES: 1♂1♀ (dried).
- Chaetophthalmus bicoloratus* Cantrell et Shima, 1991**  
Cantrell, B. K. & Shima, H. 1991, J. Aust. Ent. Soc., 30:  
52.  
PARATYPE: 1♂ (dried).
- Chaetophthalmus inconstans* Cantrell et Shima, 1991**  
Cantrell, B. K. & Shima, H. 1991, J. Aust. Ent. Soc., 30:  
55.  
PARATYPES: 2♂♂2♀♀ (dried).
- Chaetophthalmus laticeps* Cantrell et Shima, 1991**  
Cantrell, B. K. & Shima, H. 1991, J. Aust. Ent. Soc., 30:  
55.  
PARATYPE: 1♀ (dried).
- Chaetophthalmus nitidus* Cantrell et Shima, 1991**  
Cantrell, B. K. & Shima, H. 1991, J. Aust. Ent. Soc., 30:  
56.  
PARATYPES: 2♀♀ (dried).
- Chaetophthalmus sedlaceorum* Cantrell et Shima, 1991**  
Cantrell, B. K. & Shima, H. 1991, J. Aust. Ent. Soc., 30:  
54.  
PARATYPE: 1♀ (dried).
- Chaetophthalmus shinonagai* Cantrell et Shima, 1991**  
Cantrell, B. K. & Shima, H. 1991, J. Aust. Ent. Soc., 30:  
51.  
PARATYPES: 5♂♂ (dried).
- Chaetophthalmus taylora* Cantrell et Shima, 1991**  
Cantrell, B. K. & Shima, H. 1991, J. Aust. Ent. Soc., 30:  
58.  
PARATYPES: 1♂1♀ (dried).
- Chaetophthalmus wau* Cantrell et Shima, 1991**  
Cantrell, B. K. & Shima, H. 1991, J. Aust. Ent. Soc., 30:  
52.  
PARATYPES: 32♀♀ (dried).
- Clelimyia paradoxa* Herting, 1981**  
Herting, B. 1981, Stuttg. Beitr. Naturk., No. 346: 15.  
HOLOTYPE ♂ (dried): Minano, Saitama/ 25. x.  
1972/ 上三沢 K. Hara.

- Crosskeya assimilis* Shima et Chao, 1988**  
Shima, H. & Chao, C-m. 1988, Syst. Ent., 13: 356.  
PARATYPE: 1♂ (dried).
- Crosskeya longicornis* Shima et Chao, 1988**  
Shima, H. & Chao, C-m. 1988, Syst. Ent., 13: 354.  
PARATYPE: 1♂ (dried).
- Crosskeya papuana* Shima et Chao, 1988**  
Shima, H. & Chao, C-m. 1988, Syst. Ent., 13: 356.  
PARATYPES: 26♂♂1♀ (dried).
- Ctenophornia frontalis* Ziegler et Shima, 1996**  
Ziegler, J. & Shima, H. 1996, Beitr. Ent., 46(2): 448.  
PARATYPES: 1♂2♀♀ (dried).
- Degeeriopsis apocola* Shima, 1997**  
Shima, H. 1997, Bull. Grad. Schl. Soc. Cult. Stud., Kyushu  
Univ., 3 (1997): 173.  
HOLOTYPE ♂ (dried): Mindanao/ Mt. Apo, Agko-  
Lake Binado/ 1350-2300m alt.// 5. viii. 1978/  
Nakanishi, A. & Yata, O. leg.  
Remarks. The holotype terminalia are stored in  
glycerol in a plastic microvial pinned below the  
specimen. The collecting month of the holotype  
was published as "vii" in the original description.
- Dexia gilva* Mesnil, 1980**  
Mesnil, L. P. 1980, Fliegen Pal. Reg., 64f. Dexiinae: 44.  
HOLOTYPE ♂ (dried): KYUSHU/ Shinmura/  
Amami Oshima/ (Ryukyus)/ xi-5-1966/ T. Okuno  
leg.  
Remarks. The locality and the collector of the  
holotype were published as "Shimyra and T.  
Okunoka" respectively in the original description.
- Dexiomimops crassipes* Shima, 1987**  
Shima, H. 1987, Sieboldia, Suppl. : 92.  
PARATYPE: 1♀ (dried).
- Dexiomimops curtipes* Shima, 1987**  
Shima, H. 1987, Sieboldia, Suppl. : 94.  
PARATYPE: 1♀ (dried).
- Dexiomimops fuscata* Shima et Chao, 1992**  
Shima, H. & Chao, C-m. 1992, Jpn. J. Ent., 60(3): 640.  
PARATYPE: 1♂ (dried).
- Eubrachymera marginalis* Mesnil et Shima, 1978**  
Mesnil, L. P. & Shima, H. 1978, Kontyû, 46(2): 317.  
HOLOTYPE ♂ (dried): HONSHU/ Karuizawa/  
Kutsukake/ (NAGANO).



PARATYPES: 3 ♀ ♀ (dried).

Remarks. The holotype terminalia are stored in glycerol in a plastic microvial pinned below the specimen. The collecting date and collector of the holotype was published as "9. vii. 1966 and H. Shima" respectively in the original description.

***Eucarcelia japonica* Shima, 1968**

Shima, H. 1968, J. Fac. Agric. Kyushu Univ., 14(4): 530.

PARATYPE: 1 ♂ (dried).

***Feriola angustifrons* Shima, 1988**

Shima, H. 1988, Bull. Kitakyushu Mus. Nat. Hist., 8: 19.

PARATYPES: 4 ♂♂ 1 ♀ (dried).

***Frontina femorata* Shima, 1988**

Shima, H. 1988, Bull. Kitakyushu Mus. Nat. Hist., 8: 33.

HOLOTYPE ♂ (dried): HOKKAIDO/ Mt. Rause/ (200-900m.)// 3. VIII. 1967/ H. Shima.

PARATYPES: 2 ♂♂ 4 ♀ ♀ (dried).

***Frontina nigrifemoralis* Shima, 1968**

Shima, H. 1968, Kontyu, 36(4): 355.

PARATYPES: 3 ♂♂ 1 ♀ (dried).

***Frontina tricolor* Shima, 1988**

Shima, H. 1988, Bull. Kitakyushu Mus. Nat. Hist., 8: 33.

HOLOTYPE ♂ (dried): Mt. Bukoo Saitama/ 24-vii-1977/ (Nishione) K. Hara.

PARATYPES: 1 ♂ 10 ♀ ♀ (dried).

Remarks. The collecting date of the holotype was published as "23. vii. 1977" in the original description.

***Gibsonomyia aristalis* Mesnil et Shima, 1978**

Mesnil, L. P. & Shima, H. 1978, Kontyû, 46(2): 313.

HOLOTYPE ♂ (dried): HIDA/ Shin-hodaka/ 14. VII. 1969/ A. Nagatomi.

PARATYPES: 5 ♂♂ 3 ♀ ♀ (dried).

***Gymnomaquartia japonica* Mesnil et Shima, 1978**

Mesnil, L. P. & Shima, H. 1978, Kontyû, 46(2): 322.

HOLOTYPE ♂ (dried): SHIKOKU/ Mt. Ishizuchi/ (Ehime)// v. 31. 1967/ H. Shima.

PARATYPES: 2 ♂♂ (dried).

***Hemyda hertingi* Ziegler et Shima, 1996**

Ziegler, J. & Shima, H. 1996, Beitr. Ent., 46 (2): 462.

PARATYPE: 1 ♂ (dried).

***Isosturmia pilosa* Shima, 1987**

Shima, H. 1987, Bull. Kitakyushu Mus. Nat. Hist., 6: 227.

HOLOTYPE ♂ (dried): KYUSHU/ Naidaijin/ (650-800m.)/ Kumamoto// V. 7. 1967/ H. Shima.

PARATYPES: 5 ♂♂ (dried).

***Leptothelaira latistriata* Shima, 1988 (Fig. 3g)**

Shima, H. 1988, Bull. Kitakyushu Mus. Nat. Hist., 8: 17.

HOLOTYPE ♂ (dried): NEPAL/ Chiaksils/ (2800m alt.)/ 20. vii. 1981/ J. Emoto.

PARATYPES: 3 ♂♂ (dried).

***Leptothelaira longicaudata* Mesnil et Shima, 1979**

Mesnil, L. P. & Shima, H. 1979, Kontyû, 47(4): 478.

HOLOTYPE ♂ (dried): HOKKAIDO/ Kiyokawa/ (Ashoro)// 23. vii. 1967/ A. Nakanishi.

PARATYPES: 3 ♂♂ 3 ♀ ♀ (dried).

***Leptothelaira meridionalis* Mesnil et Shima, 1979**

Mesnil, L. P. & Shima, H. 1979, Kontyû, 47(4): 480.

HOLOTYPE ♂ (dried): KYUSHU/ Wanizukayama/ (Miyazaki)/ V. 23. 1966/ A. Nagatomi.

PARATYPES: 4 ♂♂ (dried).

***Leptothelaira orientalis* Mesnil et Shima, 1979**

Mesnil, L. P. & Shima, H. 1979, Kontyû, 47(4): 481.

PARATYPE: 1 ♂ (dried).

***Ligeriella coxalis* Shima, 1994**

Shima, H. 1994, Jpn. J. Sanit. Zool., 45, Suppl.: 278.

HOLOTYPE ♂ (dried): NEPAL Solu-/ khumbu, Chumoa-/ Lukia (2715-2800/ m) 3 Aug. 1992/ H. Shima leg.

Remarks. The holotype terminalia are stored in glycerol in a plastic microvial pinned below the specimen. The collecting date of the holotype was published as "2. viii. 1992" in the original description.

***Linnaemya ambigua* Shima, 1986**

Shima, H. 1986, Sieboldia, 5(1): 43.

HOLOTYPE ♂ (dried): Takachihomine/ Mt. Kirishima/ VI-6-1965/ A. TANAKA.

PARATYPES: 5 ♂♂ 2 ♀ ♀ (dried).

***Linnaemya hirtipennis* Shima, 1986**

Shima, H. 1986, Sieboldia, 5(1): 80.

HOLOTYPE ♂ (dried): HOKKAIDO/ Kiyokawa/ (Ashoro)// 23. VII. 1967/ H. Shima.

PARATYPES: 3 ♂♂ 9 ♀ ♀ (dried).

***Linnaemya microchaetopsis* Shima, 1986**

Shima, H. 1986, Sieboldia, 5(1): 35.

HOLOTYPE ♂ (dried): KYUSHU/ Aburayama/

(Fukuoka)/ 1966-IV-29/ Hiroshi Shima.

PARATYPES: 4♂♂7♀♀ (dried).

***Linnaemya pullior* Shima, 1986**

Shima, H. 1986, Sieboldia, 5(1): 29.

PARATYPE: 1♀♀ (dried).

***Linnaemya siamensis* Shima, 1986**

Shima, H. 1986, Sieboldia, 5(1): 44.

PARATYPES: 1♂♂2♀♀ (dried).

***Linnaemya tuberculata* Shima, 1986**

Shima, H. 1986, Sieboldia, 5(1): 77.

HOLOTYPE ♂♂ (dried): HOKKAIDO/ Kiyokawa/  
(Ashoro)// 23. VII. 1967/ H. Shima.

PARATYPES: 7♂♂6♀♀ (dried).

***Lixophaga latigena* Shima, 1979 (Fig. 3h)**

Shima, H. 1979, Kontyû, 47(3): 308.

HOLOTYPE ♂♂ (dried): KYUSHU/ Asahigaoka/  
Tokunoshima/ (Ryukyus)// XI. 7. 1966/ Y.  
Miyatake.

PARATYPES: 1♂♂6♀♀ (dried).

***Medinodexia exigua* Shima, 1979**

Shima, H. 1979, Bull. Natn. Sci. Mus., Ser. A (Zool.), 5(2):  
140.

PARATYPES: 2♂♂1♀♀ (dried).

***Medinodexia orientalis* Shima, 1979**

Shima, H. 1979, Bull. Natn. Sci. Mus., Ser. A (Zool.), 5(2):  
137.

PARATYPES: 6♂♂3♀♀ (dried).

***Metadrinomyia argentea* Shima, 1980**

Shima, H. 1980, Kontyû, 48(2): 263.

HOLOTYPE ♀♀ (dried): E. NEPAL/ Chiliwa  
(1350m)/ 27°29'N, 87°47'E---/ Shibuku (2100m)/  
27°30'N, 87°41'E// June 7. 1972/ H. Shima leg./  
Kyushu Univ. Col.

***Metadrinomyia proclinata* Shima, 1980**

Shima, H. 1980, Kontyû, 48(2): 261.

HOLOTYPE ♂♂ (dried): TSUSHIMA/ Hitakatsu/ 5.  
VIII. 1975/ Y. Ikezaki.

PARATYPES: 2♂♂♂♂ (dried).

***Mycteromyiella marginalis* Shima, 1976**

Shima, H. 1976, Kontyû, 44(3): 312.

HOLOTYPE ♂♂ (dried): KYUSHU/ Inunakiyama/  
(Fukuoka)/ 1966-V-5/ Hiroshi Shima.

PARATYPES: 8♂♂♂♂5♀♀ (dried).

***Mycteromyiella obscura* Shima, 1976**

Shima, H. 1976, Kontyû, 44(3): 316.

PARATYPE: 1♂♂ (dried).

***Nemorilla aquila* Shima, 1996**

Shima, H. 1996, Beitr. Ent., 46 (1): 225.

PARATYPES: 2♀♀♀♀ (dried).

***Nemorilla insulata* Shima, 1996**

Shima, H. 1996, Beitr. Ent., 46 (1): 224.

PARATYPE: 1♂♂ (dried).

***Nipponoceromyia pubiocolata* Mesnil et Shima, 1978**

Mesnil, L. P. & Shima, H. 1978, Kontyû, 46(2): 325.

HOLOTYPE ♂♂ (dried): HONSHU/ Kawaragoya/  
Shigakogen/ Nagano Pref.// 1975. v. 30/ A.  
Nakanishi.

PARATYPES: 4♂♂♂♂ (dried).

***Oswaldia flavitibia* Shima, 1991 (Fig. 3i)**

Shima, H. 1991, Jpn. J. Ent., 59(1): 69.

HOLOTYPE ♀♀ (dried): HONSHU/ S. Jpn. Alps/  
Ôkambazawa/ 1500-2000 m/ 25-26. vii. 1986/ H.  
Shima.

***Oswaldia gilva* Shima, 1991**

Shima, H. 1991, Jpn. J. Ent., 59(1): 77.

HOLOTYPE ♂♂ (dried): KYUSHU/ Kumamoto/ Mt.  
Hakucho/ 30. vii. 1977/ H. Shima.

PARATYPES: 8♂♂♂♂6♀♀♀♀ (dried).

***Oswaldia glauca* Shima, 1991**

Shima, H. 1991, Jpn. J. Ent., 59(1): 80.

HOLOTYPE ♂♂ (dried): HONSHU/ S. Jpn. Alps/  
Ôkambazawa/ 1500-2000 m/ 25-26. vii. 1986/ H.  
Shima.

PARATYPES: 2♂♂♂♂2♀♀♀♀ (dried).

***Oswaldia strigosa* Shima, 1991**

Shima, H. 1991, Jpn. J. Ent., 59(1): 83.

HOLOTYPE ♂♂ (dried): KYUSHU/ Fukuoka/ Mt.  
Sefuri/ 13. v. 1986/ H. Shima.

PARATYPE: 1♂♂ (dried).

***Oxyphyllomyia alticola* Shima, 1983**

Shima, H. 1983, Ann. Zool. Jpn., 56(4): 340.

HOLOTYPE ♂♂ (dried): E. NEPAL/ Thudam  
(3500m)/ 27°45'N, 87°32'E/ July 1-4. 1972/  
Malaise trap/ Kyushu Univ. Coll.

PARATYPES: 38♂♂♂♂1♀♀ (dried).

***Pales abdita* Cerretti, 2005**

Cerretti, P. 2005, Zootaxa, 885: 11.

PARATYPE: 1♂(dried).

***Pales marae* Cerretti, 2005**

Cerretti, P. 2005, Zootaxa, 885: 17.

PARATYPES: 1♂1♀(dried).

***Pales tamilensis* Shima, 1994**

Shima, H. 1994, Jpn. J. Sanit. Zool., 45, Suppl.: 283.

PARATYPES: 1♂1♀(dried).

***Paradrino fijiana* Shima, 1984**

Shima, H. 1984, Int. J. Ent., 26(1-2): 153.

PARATYPE: 1♀(dried).

***Paradrino longicornis* Shima, 1984**

Shima, H. 1984, Int. J. Ent., 26(1-2): 147.

HOLOTYPE ♂ (dried): RYUKYUS/ Henoki/  
Okinawa Is./ H. Tanaka leg.// 26. IV. 1976 emg./  
ex. Libythea/ celtis pupa.

PARATYPES: 7♂♂4♀♀(dried).

Remarks. The holotype puparium is glued on a piece  
of paper pinned below the specimen.

***Paratryphera minor* Shima, 1980**

Shima, H. 1980, Kontyû, 48(1): 9.

HOLOTYPE ♂ (dried): KYUSHU/ Kashii/  
(Fukuoka)/ 20. vi. 1967/ K. Ueda Leg.// Host:  
Corgatha/ pygmaea (P.).

PARATYPES: 5♂♂1♀(dried).

Remarks. The collecting date of the holotype was  
published as "20. v. 1976" in the original  
description.

***Paravibrissina adiscalis* Shima, 1979**

Shima, H. 1979, Bull. Natn. Sci. Mus., Ser. A (Zool.), 5(2):  
143.

PARATYPE: 1♂(dried).

***Paravibrissina adiscalis infuscata* Shima, 1979**

Shima, H. 1979, Bull. Natn. Sci. Mus., Ser. A (Zool.), 5(2):  
145.

PARATYPE: 1♂(dried).

***Parerigone macrophthalma* Herting, 1981**

Herting, B. 1981, Stuttg. Beitr. Naturk., No. 346: 16.

HOLOTYPE ♀(dried): Aburayama/ Fukuoka City/  
11. IV. 1979/ H. Shima.

***Paropsivora asiatica* Shima, 1994**

Shima, H. 1979, Jpn. J. Sanit. Zool., 45, Suppl.: 280.

HOLOTYPE ♂(dried): THAILAND/ Sai York 500

m/ Kanchana Buri/ 27-29. xii. 1975/ H. Shima leg.

PARATYPE: 1♀(dried).

***Peribaea abbreviata* Tachi et Shima, 2002**

Tachi, T. & Shima, H. 2002, Tijdschr. Ent., 145: 121.

HOLOTYPE ♂(dried): HONSHU/ Gifu/ Hodaka  
(1100m)/ 12. viii. 1995/ T. Tachi.

PARATYPES: 10♂♂14♀♀(dried).

***Peribaea alternata* Shima, 1981**

Shima, H. 1981, Pacif. Ins., 23(3-4): 445.

PARATYPES: 6♂♂(dried).

***Peribaea apaturae* Tachi et Shima, 2002**

Tachi, T. & Shima, H. 2002, Tijdschr. Ent., 145: 131.

HOLOTYPE ♂(dried): KYUSHU/ Fukuoka/ Mt.  
Hikosan/ 18. iii. 1997/ R. Matsumoto.

PARATYPES: 17♂♂26♀♀(dried).

Remarks. The holotype terminalia are stored in  
glycerol in a plastic microvial and a puparium is  
glued on a piece of paper. They are pinned below  
the specimen.

***Peribaea caesiata* Tachi et Shima, 2002**

Tachi, T. & Shima, H. 2002, Tijdschr. Ent., 145: 133.

HOLOTYPE ♂ (dried): Ueyama-kogen/ Onsen  
town/ Hyogo pref./ Honshu Japan/ 2. v. 1997/ M.  
Sueyoshi leg.

PARATYPES: 2♂♂(dried).

***Peribaea egesta* Tachi et Shima, 2002**

Tachi, T. & Shima, H. 2002, Tijdschr. Ent., 145: 123.

HOLOTYPE ♂(dried): HONSHU/ Hiroshima/ Mt.  
Takezu/ 19. vii. 1995/ T. Tachi.

PARATYPES: 4♂♂9♀♀(dried).

***Peribaea glabra* Tachi et Shima, 2002 (Fig. 3j)**

Tachi, T. & Shima, H. 2002, Tijdschr. Ent., 145: 135.

HOLOTYPE ♂(dried): HOKKAIDO/ Ashoro-cho/  
Kamitoshibetsu/ 10. viii. 1996/ T. Tachi.

PARATYPES: 29♂♂18♀♀(dried).

Remarks. The holotype terminalia are stored in  
glycerol in a plastic microvial pinned below the  
specimen.

***Pexopsis kyushuensis* Shima, 1968**

Shima, H. 1968, Mushi, 42(2): 12.

PARATYPE: 1♂(dried).

***Phebellia flavescens* Shima, 1981**

Shima, H. 1981, Bull. Kitakyushu Mus. Nat. Hist., 3: 57.

HOLOTYPE ♂(dried): HOKKAIDO/ Mt. Moiwa/

Sapporo-city// 11. vii. 1967/ H. Shima.  
PARATYPES: 2♂♂(dried).

***Phebellia latipalpis* Shima, 1981**

Shima, H. 1981, Bull. Kitakyushu Mus. Nat. Hist., 3: 63.  
HOLOTYPE ♂(dried): HOKKAIDO/ Yubaridake/  
Sorachi// 15. vii. 1967/ H. Shima.  
PARATYPES: 7♂♂5♀♀(dried).

***Phebellia laxifrons* Shima, 1981**

Shima, H. 1981, Bull. Kitakyushu Mus. Nat. Hist., 3: 55.  
HOLOTYPE ♂(dried): HONSHU/ Norikura High./  
1800-2600m/ Nagano Pref// 26. vii. 1979/ K.  
Ohara.  
PARATYPES: 4♂♂(dried).

***Phebellia nudicosta* Shima, 1981**

Shima, H. 1981, Bull. Kitakyushu Mus. Nat. Hist., 3: 60.  
HOLOTYPE ♂(dried): HOKKAIDO/ Aizankei/  
(Mts. Daisetsu)// 8. viii. 1967/ H. Shima.  
PARATYPES: 11♂♂4♀♀(dried).

***Phyllomya formosana* Shima, 1988**

Shima, H. 1988, Bull. Kitakyushu Mus. Nat. Hist., 8: 11.  
HOLOTYPE ♂(dried): Alishan 2300 m/ Chiai  
Hsien/ TAIWAN// 5. VI. 1970/ col. H. Kurahashi.  
PARATYPES: 3♂♂(dried).

***Phyllomya humilis* Shima, 1988**

Shima, H. 1988, Bull. Kitakyushu Mus. Nat. Hist., 8: 13.  
HOLOTYPE ♂(dried): KYUSHU/ Fukuoka/ Mt.  
Inunaki/ 5. v. 1996/ H. Shima.  
PARATYPES: 12♂♂9♀♀(dried).

***Phyllomya japonica* Shima, 1988**

Shima, H. 1988, Bull. Kitakyushu Mus. Nat. Hist., 8: 15.  
HOLOTYPE ♂(dried): HONSHU/ S. Jpn. Alps/  
Okambazawa/ 1500-2000 m/ 25-26. vii. 1986/ H.  
Shima.  
PARATYPES: 9♂♂6♀♀(dried).

***Phyllomya palpalis* Shima et Chao, 1992**

Shima, H. & Chao, C-m. 1992, Jpn. J. Ent., 60(3): 636.  
PARATYPE: 1♂(dried).

***Phyllomya rufiventris* Shima et Chao, 1992**

Shima, H. & Chao, C-m. 1992, Jpn. J. Ent., 60(3): 634.  
PARATYPE: 1♂(dried).

***Prodegeeria gracilis* Shima, 1979**

Shima, H. 1979, Kontyû, 47(2): 132.  
HOLOTYPE ♂(dried): HONSHU/ Shimashimatani

/(Nagano)/ VII-4-1966/ Y. Miyatake.  
PARATYPES: 2♂♂(dried).

***Prodegeeria malayana* Shima, 1997**

Shima, H. 1997, Bull. Grad. Schl. Soc. Cult. Stud., Kyushu  
Univ., 3 (1997): 182.  
HOLOTYPE ♂(dried): MALAYSIA/ Taman  
Negara/ K. Tahan, 60m/ 22-26. IV. 1979/ Leg. H.  
Kurahashi.  
PARATYPE: 1♀(dried).  
Remarks. The holotype terminalia are stored in  
glycerol in a plastic microvial pinned below the  
specimen.

***Siphona (Ceranthis) angusta* Tachi et Shima, 2005**

Tachi, T. & Shima, H. 2005, Ent. Sci., 8(2): 191.  
HOLOTYPE ♂(dried): HOKKAIDO/ Kiyokawa/  
(Ashoro)// 22. VII. 1967/ M. Honda.  
PARATYPES: 3♂♂1♀♀(dried).

***Siphona (Ceranthis) nigra* Tachi et Shima, 2005**

Tachi, T. & Shima, H. 2005, Ent. Sci., 8(2): 194.  
HOLOTYPE ♂(dried): HONSHU/ Nagano pref./  
Karuizawa t./ Kose (1200m)/ 29. vii. 1998/ T.  
Tachi.  
PARATYPE: 1♂(dried).  
Remarks. The holotype terminalia are stored in  
glycerol in a plastic microvial pinned below the  
specimen. The right foreleg and the right  
middleleg are glued on the pin.

***Siphona (Ceranthis) setigera* Tachi et Shima, 2005**

Tachi, T. & Shima, H. 2005, Ent. Sci., 8(2): 196.  
HOLOTYPE ♂(dried): HONSHU/ Nagano pref./  
Sanada t./ Mt. Azumaya/ (1300-1400m)/ 29. vii.  
1998/ T. Tachi.  
PARATYPES: 6♂♂29♀♀(dried).

***Smidtia antennalis* Shima, 1996**

Shima, H. 1996, Beitr. Ent., 46 (1): 178.  
HOLOTYPE ♂(dried): 15. v. 1989/ Aomori Pref./  
Hirosaki C./ Zatoishi/ Sho Fukushi.  
PARATYPE: 1♂(dried).

***Smidtia fukushii* Shima, 1996**

Shima, H. 1996, Beitr. Ent., 46 (1): 194.  
HOLOTYPE ♂(dried): 4. v. 1989/ Akita Pref./ Oga  
Pen./ Mt. Shinzan/ Sho Fukushi.  
PARATYPES: 3♂♂(dried).

***Smidtia harai* Shima, 1996**

Shima, H. 1996, Beitr. Ent., 46 (1): 188.

HOLOTYPE ♂ (dried): HONSHU/ Karuizawa/  
Kutsukake/ (NAGANO)/ 9. vii. 1966/ H. Shima.  
PARATYPES: 12♂♂(dried).

***Smidtia pauciseta* Shima, 1996**

Shima, H. 1996, Beitr. Ent., 46 (1): 179.

PARATYPES: 1♂2♀♀(dried).

***Smidtia trisetosa* Shima, 1996**

Shima, H. 1996, Beitr. Ent., 46 (1): 182.

HOLOTYPE ♂ (dried): JAPAN/ Omogo-kei/  
EHIME/ 5-6. Apr. 1974/ S. Shinonaga.  
PARATYPES: 2♂♂(dried).

***Strobliomyia insularis* Shima, 1970**

Shima, H. 1970, J. Fac. Agric. Kyushu Univ., 16(2): 179.

PARATYPE: 1♂(dried).

***Sturmia micronychia* Shima et Tachi, 2002**

Shima, H. & Tachi, T. 1988, Ent. Sci., 2002, 5(3): 298.

HOLOTYPE ♂ (dried): Insectary rearing (25°C  
LD16:8)/ at Ent. Lab. of Kobe Univ./ Host:  
*Atrophaneura alcinous*/ (Lepidoptera: Papilionidae)/  
fed with *Aristolochia onoei*// collected in the  
Rokko mountains/ (Kita-ku, Kobe, Hyogo pref.)/  
Cocoon formation. 9 Aug. 1995/ Adult emergence.  
22 Aug. 1995/ Y. Ueda leg.

PARATYPES: 4♂♂7♀♀(dried).

Remarks. The holotype puparium is glued on two  
pieces of paper pinned below the specimen.

***Symmorphomyia katayamai* Mesnil et Shima, 1977**

Mesnil, L. P. & Shima, H. 1977, Kontyû, 45(1): 38.

HOLOTYPE ♂ (dried): TANBA/ SASAYAMA/  
MAY 5 1966/ H. KATAYAMA/ parasite of/  
*Symmorphus* sp.

PARATYPES: 3♀♀(dried).

***Takanomyia antennalis* Shima, 1988**

Shima, H. 1988, Bull. Kitakyushu Mus. Nat. Hist., 8: 29.

HOLOTYPE ♂ (dried): E. NEPAL/ Basantapur  
(2300m)/ 27°06'N, 87°23'E---/ 27°08'N, 87°26'E//  
May 10, 1972/ H. Shima leg./ Kyushu Univ. Col.  
PARATYPES: 6♂♂4♀♀(dried).

***Takanomyia basalis* Shima, 1988**

Shima, H. 1988, Bull. Kitakyushu Mus. Nat. Hist., 8: 28.

HOLOTYPE ♂ (dried): NEPAL/ Phulchoki 2762m/  
18-21. Sept. 1987/ Coll. M. Limbu.

Remarks. The holotype terminalia are stored in

glycerol in a glass microvial pinned below the  
specimen.

***Takanomyia frontalis* Shima, 1988**

Shima, H. 1988, Bull. Kitakyushu Mus. Nat. Hist., 8: 26.

HOLOTYPE ♂ (dried): NEPAL/ Phulchoki 2762m/  
18-21. Sept. 1987/ Coll. M. Limbu.

***Takanomyia rava* Shima, 1988**

Shima, H. 1988, Bull. Kitakyushu Mus. Nat. Hist., 8: 28.

HOLOTYPE ♀ (dried): E. NEPAL/ Basantapur  
(2300m)/ 27°06'N, 87°23'E---/ 27°08'N, 87°26'E//  
April 29, 1972/ H. Shima leg./ Kyushu Univ. Col.  
PARATYPES: 2♂♂1♀♀(dried).

***Thecocarcelia nigrapex* Shima, 1998**

Shima, H. 1998, Bull. Grad. Schl. Soc. Cult. Stud., Kyushu  
Univ., 4: 151.

HOLOTYPE ♂ (dried): THAILAND/ nr. Sai Yok,  
500 m/ Kanchana Buri/ 9. IX. 1975.

***Thecocarcelia ochracea* Shima, 1998**

Shima, H. 1998, Bull. Grad. Schl. Soc. Cult. Stud., Kyushu  
Univ., 4: 155.

HOLOTYPE ♂ (dried): BORNEO, SABAH/ Papar  
50k SW/ of Kota Kinabalu/ 13-15. Nov. 1975/ S.  
Shinonaga.

Remarks. The holotype terminalia are stored in  
glycerol in a plastic microvial pinned below the  
specimen.

***Trigonospila magna* Shima, 1979**

Shima, H. 1979, Kontyû, 47(3): 301.

HOLOTYPE ♂ (dried): KYUSHU/ Takachiho-  
mine/ Kagoshima pref.// vi. 7. 1966/ H. Shima leg.  
PARATYPES: 2♂♂1♀♀(dried).

***Trixella chinensis* Zhang et Shima, 2005**

Zhang, C.-T. & Shima, H. 2005, Insect Science, 12: 59.

PARATYPES: 3♂♂1♀♀(dried).

***Trixella nox* Shima, 1988**

Shima, H. 1988, Bull. Kitakyushu Mus. Nat. Hist., 8: 2.

HOLOTYPE ♂ (dried): NEPAL/ Salpa La (2900)/  
25. vii. 1981/ J. Emoto/ Light trap.  
PARATYPES: 4♂♂1♀♀(dried).

***Uromedina rufipes* Shima, 1985**

Shima, H. 1985, Kontyû, 53(1): 108.

HOLOTYPE ♂ (dried): 21. Sept. '80/ Mt. Iwaki/  
Akakura/ Sho Fukushi.  
PARATYPES: 4♂♂(dried).

***Vibrissina angustifrons* Shima, 1983**Shima, H. 1983, *Kontyû*, 51(4): 642.

HOLOTYPE ♂ (dried): Mt. Yuwan/ Amami-oshima/ 18 June 1963/ S. Shinonaga.

PARATYPES: 2 ♀ ♀ (dried).

Remarks. The holotype (below) and the paratype (upper) are pinned together. The holotype abdomen and terminalia are stored in glycerol in a plastic microvial pinned below the specimens.

***Vibrissina aurata* Shima, 1983 (Fig. 3k)**Shima, H. 1983, *Kontyû*, 51(4): 638.

HOLOTYPE ♂ (dried): HOKKAIDO/ Akanmachi/ (Kushiro)// 31. VII. 1967/ H. Shima.

PARATYPES: 1 ♂ 1 ♀ (dried).

***Winthemia angusta* Shima, Chao et Zhang, 1992**Shima, H., Chao, C-m. and Zhang, W-X. 1992, *Jpn. J. Ent.*, 60(1): 219.

PARATYPES: 8 ♂ ♂ 9 ♀ ♀ (dried).

***Winthemia aurea* Shima, Chao et Zhang, 1992**Shima, H., Chao, C-m. and Zhang, W-X. 1992, *Jpn. J. Ent.*, 60(1): 217.

PARATYPES: 6 ♂ ♂ 1 ♀ (dried).

***Winthemia brevipennis* Shima, 1996 (Fig. 3l)**Shima, H. 1996, *Beitr. Ent.*, 46 (1): 210.

HOLOTYPE ♂ (dried): Ogose, Saitama/ Honshu, 1-VIII/ T. NAMBU 1977.

Remarks. The holotype terminalia are stored in glycerol in a plastic microvial pinned below the specimen.

***Winthemia ikezakii* Shima, 1996**Shima, H. 1996, *Beitr. Ent.*, 46 (1): 208.

HOLOTYPE ♂ (dried): Matsuura/ Nagasaki/ 5-VI-1966.

PARATYPE: 1 ♂ (dried).

***Winthemia marginalis* Shima, Chao et Zhang, 1992**Shima, H., Chao, C-m. and Zhang, W-X. 1992, *Jpn. J. Ent.*, 60(1): 223.

PARATYPES: 10 ♂ ♂ 3 ♀ ♀ (dried).

***Winthemia mediocris* Shima, 1996**Shima, H. 1996, *Beitr. Ent.*, 46 (1): 201.

HOLOTYPE ♂ (dried): HOKKAIDO/ Berabonai/ (Ashoro)/ 24. vii. 1967/ H. Shima.

PARATYPE: 1 ♂ (dried).

***Winthemia miyatakei* Shima, 1996**Shima, H. 1996, *Beitr. Ent.*, 46 (1): 210.

HOLOTYPE ♂ (dried): KYUSHU/ Usa-hachiman/ Oita Pref./ 27. ix. 1966/ Y. Miyatake.

Remarks. The holotype terminalia are stored in glycerol in a plastic microvial pinned below the specimen.

***Winthemia proclinata* Shima, Chao et Zhang, 1992**Shima, H., Chao, C-m. and Zhang, W-X. 1992, *Jpn. J. Ent.*, 60(1): 212.

PARATYPES: 3 ♂ ♂ 1 ♀ (dried).

***Winthemia verticillata* Shima, Chao et Zhang, 1992**Shima, H., Chao, C-m. and Zhang, W-X. 1992, *Jpn. J. Ent.*, 60(1): 214.

PARATYPES: 1 ♂ 1 ♀ (dried).

**T e p h r i t i d a e*****Tephritis longicauda* Sueyoshi, 1998 (Fig. 3m)**Sueyoshi, M. 1998, *Ent. Sci.*, 1(1): 120.

HOLOTYPE ♀ (dried): Hirogawara/ Ashiyasu vil./Yamanashi Pref./ Honshu Japan/ 13. vii. 1996/ T. Tachi leg.

PARATYPES: 2 ♂ ♂ 1 ♀ 5exs. (dried).

Remarks. The collecting date of the holotype was published as "14. viii. 1996" in the original description.

***Tephritis saussurea* Sueyoshi, 1998**Sueyoshi, M. 1998, *Ent. Sci.*, 1(1): 125.

HOLOTYPE ♂ (dried): Kanayama/ Sudama town/ Yamanashi Pref./ Honshu Japan/ 30. viii. 1996/ M. Sueyoshi leg.

PARATYPES: 2 ♂ ♂ 1 ♀ (dried).

Remarks. The collecting date of the holotype was published as "30. vii. 1996" in the original description. The puparium is glued on a piece of paper pinned below the specimen.

**T r i c h o c e r i d a e*****Trichocera (Metatrachocera) bifurcata* Nakamura et Saigusa, 1997**Nakamura, T. & Saigusa, T. 1997, *Natur. Hum. Activ.*, 2: 61.

HOLOTYPE ♂ (dried): Hokkaido, Japan/ Ikutora pass./ Minamifurano t./ Oct. 12, 1996/ T. Nakamura leg.

PARATYPES: 7 ♂ ♂ 3 ♀ ♀ (dried).

***Trichocera (Metatrachocera) chaetopyga* Nakamura et Saigusa, 1996**

Nakamura, T. &amp; Saigusa, T. 1996, Jpn. J. Ent., 64(4): 796.

HOLOTYPE ♂ (dried): GIFU/ Ontakesan/ Takane-mura/ 31. Oct. 1995/ K. Nakatsuka.

PARATYPES: 2♂♂2♀♀ (dried).

***Trichocera (Metatrachocera) corallifera* Nakamura et Saigusa, 1997**

Nakamura, T. &amp; Saigusa, T. 1997, Natur. Hum. Activ., 2: 80.

HOLOTYPE ♂ (dried): Aomori: Japan/ Akaishigawa/ Ajigasawa Town/ Oct. 27, 1996/ T. Nakamura leg.

PARATYPES: 7♂♂3♀♀ (dried).

***Trichocera (Metatrachocera) cordata* Nakamura et Saigusa, 1997**

Nakamura, T. &amp; Saigusa, T. 1997, Natur. Hum. Activ., 2: 73.

HOLOTYPE ♂ (dried): Hokkaido: Japan/ Toikanbetsu./ Horonobe t./ Oct. 20, 1996/ T. Nakamura leg.

PARATYPES: 7♂♂3♀♀ (dried).

Remarks. The holotype abdomen and terminalia are missing.

***Trichocera (Metatrachocera) crassicauda* Nakamura et Saigusa, 1996 (Fig. 3n)**

Nakamura, T. &amp; Saigusa, T. 1996, Jpn. J. Ent., 64(4): 799.

HOLOTYPE ♂ (dried): HONSHU: JAPAN/ ITAMURO SPA. (alt. 700M)/ KUROISO, TOCHIGI PREF./ 1995. XI. 12/ TAKEYUKI NAKAMURA leg.

PARATYPES: 2♂♂2♀♀ (dried).

***Trichocera (Metatrachocera) hypandrialis* Nakamura et Saigusa, 1997**

Nakamura, T. &amp; Saigusa, T. 1997, Natur. Hum. Activ., 2: 78.

HOLOTYPE ♂ (dried): Hokkaido: Japan/ Karikachi pass/ Oct. 13, 1996/ T. Nakamura leg.

Remarks. The holotype terminalia are stored in glycerol in a hole of urethane sheet pinned below the specimen.

***Trichocera (Metatrachocera) monstrosa* Nakamura et Saigusa, 1997 (Fig. 3o)**

Nakamura, T. &amp; Saigusa, T. 1997, Natur. Hum. Activ., 2: 67.

HOLOTYPE ♂ (dried): Hokkaido: Japan/

Tonashibetsu./ Minamifurano t./ Oct. 11, 1996/ T. Nakamura leg.

PARATYPES: 7♂♂3♀♀ (dried).

***Trichocera (Metatrachocera) truncata* Nakamura et Saigusa, 1997**

Nakamura, T. &amp; Saigusa, T. 1997, Natur. Hum. Activ., 2: 65.

HOLOTYPE ♂ (dried): Hokkaido: Japan/ Ebeetsu cho./ Takikawa city/ Oct. 16, 1996/ T. Nakamura leg.

Remarks. The holotype terminalia are stored in glycerol in a hole of urethane sheet pinned below the specimen. The left wing of the holotype is mounted on a slide.

**H E T E R O P T E R A****M i r i d a e*****Yamatolygus insulanus* Yasunaga, 1994 (Fig. 1o)**

Yasunaga, T. 1994, Jpn. J. Ent., 62(1): 121.

HOLOTYPE ♂ (dried): Materia water fall/ Fukumoto, Yamato vl./ Amamioshima Is./ 12. v. 1987 (L. T.)/ Col. T. Yasunaga.

***Zhengiella scutellata* Yasunaga et Lu, 1994 (Fig. 1p)**

Yasunaga, T. &amp; Leu, N. 1994, Proc. Japan Soc. Syst. Zool., 50: 43.

HOLOTYPE ♂ (dried): Mt. Terukubi/ Okinawa Pref./ 19. iv. 1986 (L. T.)/ T. Yasunaga leg.

**L E P I D O P T E R A****D a n a i d a e*****Parantica dannatti diuataensis* Takei et Yamamoto, 1979 (Fig. 4a)**

Takei, S. &amp; Yamamoto, A. 1979, Tyo to Ga, 30(1/2): 93.

HOLOTYPE ♂ (dried): Mt. Hilongkilong/ MINDANAO/ 2. viii. 1978/ S. Takei leg.

PARATYPE: 1♀ (dried).

***Parantica dannatti malindangensis* Yamamoto et Takei, 1980**

Yamamoto, A. &amp; Takei, S. 1980, Tyo to Ga, 31(1/2): 58.

HOLOTYPE ♀ (dried): Mt. Malindang/ MINDANAO/ 11. viii. 1979/ S. Takei leg.

PARATYPE: 1♂ (dried).

**H e s p e r i i d a e*****Carterocephalus palaemon akaishianus* Fujioka, 1970**

Fujioka, T. 1970, *Tyo to Ga*, 21(3/4): 128.

PARATYPES: 1♂1♀ (dried).

### Lycaenidae

#### *Coreana raphaelis ohruui* Shirôzu, 1962 (Fig. 4b)

Shirôzu, T. 1962, *Tyo to Ga*, 12(3): 48.

HOLOTYPE ♂(dried): Showa (新庄) / 17. v. 1961  
羽化/ 5. v. 蛹化 (No. 14)/ S. Ohruui 採卵// No.  
14/ 17. v. 61 羽化♂/ 5. v. 蛹化.

ALLOTOPOTYPE: 1♀ (dried).

Remarks. The locality of the holotype was published as "Showa, Shinjo-shi, Yamagata Pref., Japan" in the original description.

#### *Euaspa milionia formosana* Nomura, 1931

Nomura, K. 1931, *Zephyrus*, 3(1): 58.

SYNTYPE ex.(dried): 太平山/ 1911. 8.

Remarks. The terminalia and the legs except for a hindleg of the holotype are missing. The locality and other data of the holotype were published as "台北州羅東郡シキクン付近, 13. viii, 1930" in the original description [in japanese].

#### *Everes (Bothrinia) celastroides* Shirôzu et Saigusa, 1962 (Fig. 4c)

Shirôzu, T. & Saigusa, T. 1962, *Nature Life Southeast Asia*, 2: 74.

HOLOTYPE ♂ (dried): Doi Inthanon/ '58 I-6/  
YODA.

ALLOTYPE ♀ (dried).

Remarks. The holotype terminalia are missing.

#### *Heliophorus forficatus* Yago et Nakanishi, 2003

Yago, M. & Nakanishi, A. 2003, *Bull. Soc. Ent. Fr.*, 108(1): 28.

PARATYPES: 2♂♂(dried).

#### *Heliophorus kohimensis elioti* Yago, Saigusa et Nakanishi, 2002

Yago, M., Saigusa, T. and Nakanishi, A. 2002, *Ent. Sci.*, 5(3): 380.

PARATYPES: 3♂♂(dried).

#### *Heliophorus (Kulua) smaragdinus* Yago et Monastyrskii, 2002

Yago, M. 2002, *Tijdschr. Ent.*, 145:150.

PARATYPES: 2♂♂(dried).

#### *Horaga uedai* Yago, 2004 (Fig. 4d)

Yago, M. 2004, *Tyo to Ga*, 55(1): 14.

HOLOTYPE ♂ (dried): Phoo Pan/ Xam Neua/  
LAOS/ May 8, 2002.

PARATYPE: 1♀ (dried).

Remarks. The holotype terminalia are stored in glycerol in a plastic microvial pinned below the specimen.

#### *Lycaeides argyrognomon shirahatai* Shirôzu, 1953

Shirôzu, T. 1953, *Sieboldia*, 1(2): 156.

PARATYPES: 1♂1♀ (dried).

#### *Nacaduba taiwana* Matsumura, 1919

Matsumura, S. 1919, *Thous. Ins. Jpn., Addit.*, 3.: 635.

HOLOTYPE ♂(dried): Formosa / Matsumura.

Remarks. The holotype abdomen and terminalia are missing.

#### *Nacaduba takamukuana* Matsumura, 1919

Matsumura, S. 1919, *Thous. Ins. Jpn., Addit.*, 3.: 637.

HOLOTYPE ♂ (dried): Formosa/ Matsumura//  
FORM.// 3// Type/ Matsumura.

Remarks. The holotype terminalia are missing. The collector of the holotype was published as "T. Takamuku" in the original description.

#### *Strymonidia iyonis kibiensis* Shirôzu et Nanba, 1973 (Fig. 4e)

Shirôzu, T. & Nanba, M. 1973, *Tyo to Ga*, 23(3, 4): 65.

HOLOTYPE ♂(dried): 新見市長屋/ 28. v. 1972/  
M. Nanba.

ALLOTYPE ♀ (dried)

PARATYPES: 2♂♂(dried).

#### *Thecla enthea morisonensis* Inoué, 1942

Inoué, M. 1942, *Ent. World*, 10(104): 644.

HOLOTYPE ♀ (dried): NIITAKAYAMA/  
TAIWAN/ July 27 1942.

#### *Thecla forsteri* Esaki et Shirôzu, 1943

Esaki, T. & Shirôzu, T. 1943, *Zephyrus*, 9(3): 151.

PARATYPE: 1♀ (dried).

#### *Wagimo slugeri insularis* Shirôzu, 1957

Shirôzu, T. 1957, *Sieboldia*, 2(1): 41.

HOLOTYPE ♂(dried): PREP. No./ 1406.

Remarks. The locality and other data of the holotype were published as "Vicinity of Musha, Central Formosa, vi-viii, 1956" in the original description.

#### *Zephyrus niveus* Nire, 1920

Nire, K. 1920, *Zool. Mag.*, 32: 375.

SYNTYPE ♀ (dried) : 7. vii. 1918/ Horrisha/ 蕃界/



Formosa.

Remarks. The syntype abdomen is missing.

### Nymphalidae

***Charaxes harmodius lalangius* Morinaka, 1990 (Fig. 4f)**

Morinaka, S. 1990, Bull. Biogeogr. Soc. Jpn., 45(13): 87.

HOLOTYPE ♂(dried): 28. Aug. 1989/ GLALANG/  
BALI BARAT/ INDONESIA.

***Euthalia mahadeva baliensis* Morinaka et Kôda, 1990**

Morinaka, S. & Kôda, N. 1990, Bull. Biogeogr. Soc. Jpn.,  
45(12): 81.

PARATYPE: 1♂(dried).

***Euthalia malapana* Shirôzu et Chung, 1958 (Fig. 4g)**

Shirôzu, T. & Chung, W. 1958, Tyo to Ga, 9(2): 18.

HOLOTYPE ♀(dried): C. TAIWAN/ Malap near/  
Musha/ 1. vii. 1957/ Wensou Chung leg.

ALLOTOPOTYPE: 1♂(dried).

***Moduza nuydai* Shirôzu et Saigusa, 1970**

Shirôzu, T. & Saigusa, T. 1970, Tyo to Ga, 21(3/4): 82.

HOLOTYPE ♀(dried): Philippines/ Bagio, Luzon/  
6 April 1957/ HERMEL NUYDA.

***Neptis argimaculosa* Wang, Sasaki, Hsu et Yata, 2003**

Wang, M., Sasaki, K., Yu-Feng, H. and Yata, O. 2003,  
Butterflies, 37: 9.

PARATYPES: 8♂♂1♀(dried).

***Neptis sedata* Sasaki, 1982 (Fig. 4h)**

Sasaki, K. 1982, Tyo to Ga, 33(1/2): 40.

HOLOTYPE ♂(dried): Near Taiping/ West  
Malaysia/ 7. iii. 1976/ M. Nakayama Coll.

PARATYPE: 1♀(dried).

### Papilionidae

***Graphium sandawanum* Yamamoto, 1977 (Fig. 4i)**

Yamamoto, A. 1977, Tyo to Ga, 28(3): 87.

HOLOTYPE ♀(dried): MINDANAO/ Baclayan/  
1976. 12. 31/ A. Yamamoto leg.

PARATYPE: 1♂(dried).

Remarks. The locality of the holotype was published  
as "Mt. Apo, Mindanao" in the original  
description.

### Pieridae

***Delias benasu arimai* Yamauchi, Yata et Peggie, 2003**

Yamauchi, T., Yata, O. and Peggie, D. 2003, Tyo to Ga,

54(2): 69.

HOLOTYPE ♂(dried): D. benasu spp./ Mt.  
Tambusisi/ C. Celebes/ Indonesia/ 1996.9.

Remarks. The collector of the holotype was  
published as "H. Arima" in the original  
description.

***Delias eichhorni kerowagi* Morinaka, Mastrigt et  
Sibatani, 1993**

Morinaka, S., Mastrigt, H. J. G. Van and Sibatani, A. 1993,  
Bull. Biogeogr. Soc. Jap, 48(1): 23.

PARATYPE: 1♂(dried).

***Delias mandaya* Yamamoto et Takei, 1982 (Fig. 4j)**

Yamamoto, A. & Takei, S. 1982, Tyo to Ga, 32(3/4): 160.

HOLOTYPE ♂(dried): Tagubud Mts. (1600m)/ SE.  
MINDANAO/ 31-VII-1981/ A. YAMAMOTO.

PARATYPE: 1♀(dried).

***Delias muliensis* Morinaka, Mastrigt et Sibatani, 1991**

Morinaka, S., Mastrigt, H. J. G. Van and Sibatani, A. 1991,  
Bull. Biogeogr. Soc. Jap, 46(16): 142.

PARATYPES: 3♂♂(dried).

***Eurema ada indosinica* Yata, 1991**

Yata, O. 1991, Bull. Kitakyushu Mus. Nat. Hist., 10: 15.

HOLOTYPE ♂(dried): Doi Inthanon/ Thailand/ 7. i.  
1958/ Yoshikawa.

PARATYPES: 2♂♂(dried).

***Eurema alitha gunjii* Shirôzu et Yata, 1981 (Fig. 4k)**

Shirôzu, T. & Yata, O. 1981, Tyo to Ga, 32(1/2): 55.

HOLOTYPE ♂(dried): Ceram/ Kamarian/ 26. i.  
1973/ Y. Gunji.

PARATYPES: 5♂♂1♀(dried).

***Eurema alitha halmaherana* Shirôzu et Yata, 1981**

Shirôzu, T. & Yata, O. 1981, Tyo to Ga, 32(1/2): 57.

HOLOTYPE ♂(dried): Halmaheira/ Djailolo/ 23.  
xii. 1972/ Y. Gunji.

PARATYPES: 2♂♂1♀(dried).

***Eurema alitha kaiensis* Yata, 1995**

Yata, O. 1995, Bull. Kitakyushu Mus. Nat. Hist., 14: 20.

PARATYPES: 11♂♂3♀♀(dried).

***Eurema alitha papuana* Shirôzu et Yata, 1981**

Shirôzu, T. & Yata, O. 1981, Tyo to Ga, 32(1/2): 59.

PARATYPES: 4♂♂3♀♀(dried).

***Eurema andersoni borneensis* Shirôzu et Yata, 1981**

Shirôzu, T. & Yata, O. 1981, Tyo to Ga, 32(1/2): 52.

HOLOTYPE ♂ (dried): BORNEO SARAWAK/  
Santuboung 30km/ North of Kuching/ 19. xi.  
11975/ H. Shima ea.

PARATYPES: 5♂♂5♀♀ (dried).

Remarks. The collecting date of the holotype was published as "19. ix. 1975" in the original description.

***Eurema andersoni inouei* Shirôzu et Yata, 1981**

Shirôzu, T. & Yata, O. 1981, Tyo to Ga, 32(1/2): 50.

HOLOTYPE ♂ (dried): Tuk Chhov/ (Kampot)/  
Cambodia/ 17. vi. 1962/ S. Inoue.

PARATYPES: 8♂♂1♀♀ (dried).

Remarks. The collecting date of the holotype was published as "17. iv. 1962" in the original description.

***Eurema andersoni kashiwaii* Shirôzu et Yata, 1981**

Shirôzu, T. & Yata, O. 1981, Tyo to Ga, 32(1/2): 54.

HOLOTYPE ♂ (dried): Kambata Wandut/ near  
Lewapaku/ Sumba Timur/ Sumba Is./  
INDONESIA/ 10. ix. 1979/ N. Kashiwai leg.

PARATYPES: 4♂♂3♀♀ (dried).

***Eurema andersoni nishiyamai* Shirôzu et Yata, 1981**

Shirôzu, T. & Yata, O. 1981, Tyo to Ga, 32(1/2): 52.

HOLOTYPE ♂ (dried): S. Nias Is./ Telukdalam/ vi.  
1979/ Y. Nishiyama coll.

PARATYPES: 1♂1♀ (dried).

***Eurema andersoni shimai* Yata et Gaonkar, 1999**

Yata, O. & Gaonkar, H. 1999, Ent. Sci., 2(2): 281.

PARATYPES: 2♂♂1♀♀ (dried).

***Eurema blanda kishidai* Yata, 1994**

Yata, O. 1994, Bull. Kitakyushu Mus. Nat. Hist., 13: 85.

PARATYPES: 12♂♂9♀♀ (dried).

***Eurema brigitta papuana* Shirôzu et Yata, 1981 (Fig. 4l)**

Shirôzu, T. & Yata, O. 1981, Tyo to Ga, 32(1/2): 49.

HOLOTYPE ♂ (dried): New Guinea/ Kundiawa/ 21.  
xii. 1973/ S. Suefuji.

PARATYPES: 2♂♂2♀♀ (dried).

Remarks. The collecting date and the collector of the holotype were published as "21. xii. 1971 and A. Sibatani" respectively in the original description.

***Eurema hiurai banahawensis* Yata et Kitamura, 1998**

Yata, O. & Kitamura, M. 1998, Butterflies, 19: 24.

HOLOTYPE ♂ (dried): C. LUZON/ Mt. Banahaw/  
1050m alt. / 22. vi. 1997/ M. Kitamura leg.

PARATYPE: 1♂ (dried).

***Eurema lacteola baliensis* Yata et Morinaka, 1990**

Yata, O. & Morinaka, S. 1990, Bull. Biogeogr. Soc. Jpn.,  
45(11): 77.

HOLOTYPE ♂ (dried): 3. JAN. 1990/ MEDEWI/  
WEST BALI/ Leg. S. MORINAKA.

PARATYPES: 16♂♂15♀♀ (dried).

Remarks. The collecting year of the holotype was published as "1970" in the original description.

***Eurema mentawiensis minuta* Yata, 1981**

Yata, O. 1981, Mem. Tsukada Coll., (3): 21, 26.

HOLOTYPE ♂ (dried): S. Nias/ Telukdalam/ vi.  
1979/ Y. Nishiyama coll.

PARATYPES: 1♂1♀ (dried).

***Eurema nilgiriensis* Yata, 1990**

Yata, O. 1990, Esakia, Special Issue 1: 162.

PARATYPES: 9♂♂2♀♀ (dried).

***Eurema pallida* Shirôzu et Yata, 1973**

Shirôzu, T. & Yata, O. 1973, Sieboldia, 4(3): 132.

HOLOTYPE ♂ (dried): Bobla/ S. Viet-Nam/ 7. vii.  
1962/ S. Inoue.

PARATYPES: 2♂♂ (dried).

***Eurema sarilata luzonensis* Shirôzu et Yata, 1981**

Shirôzu, T. & Yata, O. 1981, Tyo to Ga, 32(1/2): 54.

HOLOTYPE ♂ (dried): Luzon/ Mt. Maquiling/ 1. v.  
1973/ H. Fukuda.

PARATYPES: 8♂♂ (dried).

***Eurema sarilata rosario* Schroeder, Treadaway et Nuyda,  
1990**

Schroeder, H., Treadaway, C. G. & Nuyda, J. 1990, Ent.  
Zeits., 100(8): 140.

PARATYPES: 3♂♂ (dried).

***Eurema sarilata sibuyanensis* Yata et Treadaway, 1982**

Yata, O. & Treadaway, C. G. 1982, Tyo to Ga, 33(1/2): 26.

PARATYPES: 2♂♂3♀♀ (dried).

***Eurema simulatrix babilensis* Yata, 1994**

Yata, O. 1994, Bull. Kitakyushu Mus. Nat. Hist., 13: 68.

HOLOTYPE ♂ (dried): BABI/ 24. vi. 1984/ H.  
Detani.

PARATYPES: 12♂♂ (dried).

***Eurema simulatrix inouei* Shirôzu et Yata, 1973**

Shirôzu, T. & Yata, O. 1973, Sieboldia, 4(3): 128.

HOLOTYPE ♂ (dried): Dinh Quan/ S. Viet-Nam/

25. iii. 1962/ S. Inoue.

PARATYPES: 3♂♂(dried).

***Eurema timorensis* Shirôzu et Yata, 1977**

Shirôzu, T. & Yata, O. 1977, Kontyû, 45(3): 340.

PARATYPES: 1♂2♀(dried).

***Gandaca harina simukensis* Yamauchi et Yata, 1999**

Yamauchi, T. & Yata, O. 1999, Tyo to Ga, 50(4): 244.

HOLOTYPE ♂(dried): SIMUK ISLAND/ Batu Iss.

PARATYPES: 4♂♂1♀(dried).

Remarks. The collecting date and the collector of the the holotype were published as "ix. 1988 and Y. Nishiyama" respectively in the original description.

***Pareronia nishiyamai* Yata, 1981**

Yata, O. 1981, Mem. Tsukada Coll., (3): 20, 24.

PARATYPES: 3♂♂1♀(dried).

***Prioneris autothisbe tamblingana* Morinaka et Yata, 1994 (Fig. 4m)**

Morinaka, S. & Yata, O. 1994, Jpn. J. Ent., 62(1): 23.

HOLOTYPE ♂(dried): APR. 28. 1986/ DANAU/ TAMBLINGAN/ BALI IS./ leg. S. MORINAKA.

PARATYPE: 1♂(dried).

**S a t y r i d a e**

***Acrophtalmia albofasciata* Uémura et Yamaguchi, 1982**

Uémura, Y. & Yamaguchi, S. 1982, Mem. Tsukada Coll., (4): 32.

PARATYPES: 1♂1♀(dried).

***Acrophtalmia leto leytensis* Uémura et Yamaguchi, 1982**

Uémura, Y. & Yamaguchi, S. 1982, Mem. Tsukada Coll., (4): 32.

PARATYPES: 1♂1♀(dried).

***Acrophtalmia yamashitai* Uémura et Yamaguchi, 1982**

Uémura, Y. & Yamaguchi, S. 1982, Mem. Tsukada Coll., (4): 30.

PARATYPE: 1♂(dried).

***Erebia nipponica shibutsuana* Shirôzu, 1957**

Shirôzu, T. 1977, Sieboldia, 2(1): 39.

PARATOPOTYPES: 4♂♂(dried).

***Ragadia luzonia luteofasciata* Yamaguchi et Aoki, 1982**

Yamaguchi, S. & Aoki, T. 1982, Mem. Tsukada Coll., (4): 20.

PARATYPE: 1♂(dried).

***Ragadia maganda* Yamaguchi et Aoki, 1982**

Yamaguchi, S. & Aoki, T. 1982, Mem. Tsukada Coll., (4): 21.

PARATYPE: 1♂(dried).

***Ypthima confusa* Shirôzu et Shima, 1977**

Shirôzu, T. & Shima, H. 1977, Kontyû, 45(4): 504.

HOLOTYPE ♂(dried): Kabre-Kalapani/ 7-17.

Remarks. The collecting date and the collector of the holotype were published as "17. vii. 1955 and SONE" respectively in the original description.

***Ypthima inouei* Shirôzu et Shima, 1977**

Shirôzu, T. & Shima, H. 1977, Kontyû, 45(4): 507.

HOLOTYPE ♂(dried) : Viet Nam/ Trang Bom/ 2.

ix. 1962/ S. Inoué.

Remarks. The holotype terminalia are glued on a piece of paper pinned below the specimen.

***Ypthima posticalis aei* Shirôzu et Shima, 1977 (Fig. 4n)**

Shirôzu, T. & Shima, H. 1977, Kontyû, 45(4): 501.

HOLOTYPE ♂(dried): PHILIPPINES/ Baguio City/ Luzon Island/ 1. ix. 1967/ S. Aé leg.

Remarks. The holotype terminalia are glued on a piece of paper pinned below the specimen.

***Ypthima risompae* Uémura, 1982**

Uémura, Y. 1982, Mem. Tsukada Coll., 4: 41.

PARATYPES: 1♂1♀(dried).

***Ypthima sensibilis* Kashiwai, 1982**

Kashiwai, N. 1982, Tyo to Ga, 33(1/2): 44.

PARATYPES: 4♂♂1♀(dried).

**T i n e i d a e**

***Crypsithyris cana* Sakai et Saigusa, 2002**

Sakai, M. & Saigusa, T., 2002, Tyo to Ga, 53(1): 74.

HOLOTYPE ♂(dried): Fukuoka/ Nokonoshima/ 20. V. 1994/ M. Sakai leg.

PARATYPES: 49♂♂44♀♀(dried).

***Crypsithyris saigusai* Gaedike, 2000**

Gaedike, R. 2000, Beitr. Ent., 50(2): 369.

HOLOTYPE ♂(dried): KYUSHU/ Usajingu/ OITA/ 22. vii. 1970/ T. SAIGUSA.

PARATYPE: 1♀(dried).

Remarks. The abdomen, the left forewing and the left antenna of the holotype are missing. The larval case is pinned below the specimen.

***Eudarcia dentata* Gaedike, 2000**

Gaedike, R. 2000, Beitr. Ent., 50: 366.

HOLOTYPE ♂ (dried): KYUSHU/ Kumamotojō/  
KUMAMOTO/ vii. 1970/ T. SAIGUSA.

PARATYPE: 1♂ (dried).

Remarks. The holotype abdomen and terminalia are missing. The holotype and a paratype are mounted together.

***Eudarcia ornata* Gaedike, 2000 (Fig. 4o)**

Gaedike, R. 2000, Beitr. Ent., 50: 364.

HOLOTYPE ♂ (dried): HONSHU/ Arisukawa P./  
Shibuya/ TOKYO-TO/ U. V. 1959 em./ Col. T.  
SAIGUSA/ A. SAKAMOTO.

PARATYPES: 5♀ (dried).

Remarks. The holotype abdomen and terminalia are missing.

***Eudarcia sinjovi* Gaedike, 2000**

Gaedike, R. 2000, Beitr. Ent., 50: 366.

PARATYPES: 2♂♂3♀♀ (dried).

***Obesoceras orbiculidomus* Sakai et Saigusa, 1999**

Sakai, M. & Saigusa, T., 1999, Ent. Sci., 2(3): 405.

HOLOTYPE ♂ (dried): Fukuoka/ Ropponmatsu/ 11.  
VI. 1994/ M. Sakai leg.

PARATYPES: 35♂♂53♀♀ (dried).

**PSOCOPTERA**

**Amphipsocidae**

***Amphipsocus mangiferae* Yoshizawa, 1997**

Yoshizawa, K. 1997, Esakia, 37:19.

HOLOTYPE ♀ (in alcohol): Bangladesh/ IPSA /  
Gazipur Dist. (Mango Tree)/ 17. x. 1994/ K.  
Morimoto.

Remarks. The forewings and a hindwing of the holotype are mounted on a slide.

**Caeciliusidae**

***Caecilius nigriritbia* Yoshizawa, 1997**

Yoshizawa, K. 1997, Esakia, 37:16.

HOLOTYPE ♀ (in alcohol): Bangladesh/ IPSA/  
Gazipur Dist. (Mango Tree)/ 17. x. 1994/ K.  
Morimoto.

Remarks. A forewing and a hindwing of the holotype are mounted on a slide.

***Kodamaius directus* Yoshizawa, 1997**

Yoshizawa, K. 1997, Esakia, 37:18.

HOLOTYPE ♂ (in glycerol): Bangladesh/ IPSA/

(Mango Tree)/ 17. x. 1994/ K. Morimoto.

Remarks. The holotype is stored in glycerol in two plastic microvials. They are pinned together with labels. A forewing and a hindwing of the holotype are mounted on a slide.

**Mesopsocidae**

***Mesopsocus dislobus* Yoshizawa, 1998**

Yoshizawa, K. 1998, Ent. Sci., 1(2): 266.

HOLOTYPE ♀ (in glycerol): Mt. Taterayama/  
Tsushima Is./ 4. v. 1992/ K. Yoshizawa.

Remarks. The holotype is stored in glycerol in two plastic microvials. They are pinned together with labels.

**Pseudocaeciliidae**

***Heterocaecilius fuscus* Yoshizawa, 1996**

Yoshizawa, K. 1996, Jpn. J. Ent., 64(1): 8.

HOLOTYPE ♂ (in alcohol): Ryukyus/Yona/  
Okinawajima Is./ Okinawa Pref./ 22. v. 1993/ K.  
Yoshizawa.

PARATYPE: 1♂ (dried).

***Pseudoscottiella morimotoi* Yoshizawa, 1997**

Yoshizawa, K. 1997, Esakia, 37: 22.

HOLOTYPE ♂ (in glycerol): Bangladesh/ IPSA/  
(Mango tree)/ 17. x. 1994/ K. Morimoto.

Remarks. The holotype is stored in glycerol in two plastic microvials pinned together with labels. A forewing of the holotype is mounted on a slide.

***Pseudoscottiella sakishimensis* Yoshizawa, 1996**

Yoshizawa, K. 1996, Jpn. J. Ent., 64(2): 308.

HOLOTYPE ♂ (in alcohol): Ryukyus/ Kuuera/  
Ishigakijima Is./ Okinawa Pref./ 16. v. 1993/ K.  
Yoshizawa.

**Psocidae**

***Atrichadenotecnum quadripunctatum* Yoshizawa, 1998**

Yoshizawa, K. 1998, Ent. Scand., 29(2): 205.

HOLOTYPE ♂ (in alcohol): Nippara/ Okutama/  
Tokyo Met./ 16. viii. 1992/ K. Yoshizawa.

Remarks. A forewing, a hindwing, four legs and terminalia of the holotype are mounted on a slide.

***Atrichadenotecnum ryukyuense* Yoshizawa, 1998**

Yoshizawa, K. 1998, Ent. Scand., 29(2): 201.

HOLOTYPE ♂ (in alcohol): Ryukyus/ Mt.

Yonahadake/ Okinawajima Is./ 18. iv. 1996/ K. Yoshizawa.

***Atrichadenotecnum tayal* Yoshizawa, 1998**

Yoshizawa, K. 1998, Ent. Scand., 29(2): 203.

HOLOTYPE ♂ (in alcohol): TAIWAN/ Suchilanchi 1600m/ Huanshan, nr. Lishan/ Taichung-hs./ 24. xi. 1997/ K. Yoshizawa.

***Trichadenotecnum album* Yoshizawa, 2001**

Yoshizawa, K. 2001, Invert. Taxon., 15: 164.

HOLOTYPE ♂ (in alcohol): Honshu/ Experimentary Forest of/ Iwate Univ./ Takizawa Villa./ Iwate Pref./ 7. vii. 1993/ K. Yoshizawa.

PARATYPE: 1 ♀ (in alcohol).

***Trichadenotecnum amamiense* Yoshizawa, 2001**

Yoshizawa, K. 2001, Invert. Taxon., 15: 174.

HOLOTYPE ♂ (in alcohol): Ryukyus/ Sumiyo/ Amami-Oshima Is./ 26. iv. 1996/ K. Yoshizawa.

PARATYPE: 1 ♀ (in alcohol).

***Trichadenotecnum falx* Yoshizawa, 2001**

Yoshizawa, K. 2001, Invert. Taxon., 15: 193.

HOLOTYPE ♂ (in alcohol): Kyushu/ Mt. Tachibanayama/ Fukuoka City/ Fukuoka Pref./ 8. vi. 1992/ K. Yoshizawa.

PARATYPE: 1 ♀ (in alcohol).

***Trichadenotecnum furcilingum* Yoshizawa, 2001**

Yoshizawa, K. 2001, Invert. Taxon., 15: 197.

HOLOTYPE ♂ (in alcohol): Honshu/ Chiiwa/ Mt. Horaijisan/ Aichi Pref./ 21. vi. 1997/ K. Yoshizawa.

PARATYPE: 1 ♀ (in alcohol).

***Trichadenotecnum fuscipennis* Yoshizawa, 2001**

Yoshizawa, K. 2001, Invert. Taxon., 15: 199.

HOLOTYPE ♀ (in alcohol): Ryukyus/ Mt. Omotodake/ Ishigakijima Is./ 17. v. 1993/ K. Yoshizawa.

***Trichadenotecnum kumejimense* Yoshizawa, 2001**

Yoshizawa, K. 2001, Invert. Taxon., 15: 180.

HOLOTYPE ♂ (in alcohol): Ryukyus/ Mt. Daruma- Mt. Otake/ Kumejima Is./ 9. iv. 1996/ N. Takahashi.

***Trichadenotecnum latebrachium* Yoshizawa, 2001**

Yoshizawa, K. 2001, Invert. Taxon., 15: 181.

HOLOTYPE ♂ (in alcohol): Kyushu/ Mt. Hikosan/ Soedamachi/ Fukuoka Pref./ 7. vi. 1993/ K.

Yoshizawa.

PARATYPE: 1 ♀ (in alcohol).

***Trichadenotecnum magnomixtum* Yoshizawa, 2001**

Yoshizawa, K. 2001, Invert. Taxon., 15: 173.

HOLOTYPE ♂ (in alcohol): Kyushu/ Chip Factory of Hisayama/ Fukuoka Pref./ 29. iv. 1993/ K. Yoshizawa.

PARATYPE: 1 ♀ (in alcohol).

***Trichadenotecnum mixtum* Yoshizawa, 2001**

Yoshizawa, K. 2001, Invert. Taxon., 15: 172.

HOLOTYPE ♂ (in alcohol): Kyushu/ Cape Satamisaki/ Kagoshima Pref./ 29. v. 1999/ K & S. Yoshizawa.

PARATYPE: 1 ♀ (in alcohol).

***Trichadenotecnum nothoapertum* Yoshizawa, 2001**

Yoshizawa, K. 2001, Invert. Taxon., 15: 190.

HOLOTYPE ♂ (in alcohol): Kyushu/ Mt. Hikosan/ Soedamachi/ Fukuoka Pref./ 13. vii. 1995/ K. Yoshizawa.

PARATYPE: 1 ♀ (in alcohol).

***Trichadenotecnum okinawense* Yoshizawa, 2001**

Yoshizawa, K. 2001, Invert. Taxon., 15: 176.

HOLOTYPE ♂ (in alcohol): Ryukyus/ Mt. Yonahadake/ Okinawajima Is./ 15. iv. 1996/ K. Yoshizawa.

PARATYPE: 1 ♀ (in alcohol).

Remarks. The collecting year of the holotype was published as "1996" in the original description.

***Trichadenotecnum pseudomedium* Yoshizawa, 2001**

Yoshizawa, K. 2001, Invert. Taxon., 15: 183.

HOLOTYPE ♂ (in alcohol): Kyushu/ Mt. Inunakiyama/ Fukuoka Pref./ 25. x. 1993/ K. Yoshizawa.

PARATYPE: 1 ♀ (in alcohol).

***Trichadenotecnum takahashii* Yoshizawa, 2001**

Yoshizawa, K. 2001, Invert. Taxon., 15: 169.

HOLOTYPE ♂ (in alcohol): Izu-shoto/ Uramiga Fall/ Hachijojima Is./ Tokyo Met./ 1. v. 1997/ N. Takahashi.

PARATYPE: 1 ♀ (in alcohol).

***Trichadenotecnum yaeyamense* Yoshizawa, 2001**

Yoshizawa, K. 2001, Invert. Taxon., 15: 184.

HOLOTYPE ♂ (in alcohol): Ryukyus/ Toyono/ Ishigakijima Is./ 16. xi. 1994/ K. Yoshizawa.

PARATYPE: 1 ♀ (in alcohol).

***Trichadenotecnum yamatomajus* Yoshizawa, 2001**Yoshizawa, K. 2001, *Invert. Taxon.*, 15: 188.HOLOTYPE ♂ (in alcohol): Honshu/ Mt.  
Horaijisan/ Aichi Pref./ 14. vii. 1994/ K.  
Yoshizawa.

PARATYPE: 1 ♀ (in alcohol).

***Trichadenotecnum yonaguniense* Yoshizawa, 2001**Yoshizawa, K. 2001, *Invert. Taxon.*, 15: 179.HOLOTYPE ♂ (in alcohol): Ryukyus/ Tindahana/  
Yonagunijima Is./ 7. iv. 1996/ K. Yoshizawa.

## SIPHONAPTERA

## Ceratophyllidae

***Ceratophyllus hagoromo* Jameson et Sakaguti, 1959**Jameson, E. W. Jr. & Sakaguti, K. 1959, *Jpn. J. Sanit. Zool.*,  
10(4): 246.

PARATYPE: 1 ♀ (on slide).

## Hystrihopsyllidae

***Palacopsylla miyama* Sakaguti et Jameson, 1959**Sakaguti, K. & Jameson, E. W. Jr. 1959, *Ent. Rev. Japan*,  
10(1): 12.

PARATYPES: 1 ♂ 1 ♀ (on slide).

***Stenoponia tokudai* Sakaguti et Jameson, 1959**Sakaguti, K. & Jameson, E. W. Jr. 1959, *Ent. Rev. Japan*,  
10(1): 12.

PARATYPE: 1 ♀ (on slide).

## Leptopsyllidae

***Peromyscopsylla hamifer michinoku* Sakaguti, 1960**Sakaguti, K. 1960, *Jpn. J. Sanit. Zool.*, 11(3): 128.

PARATYPES: 1 ♂ 1 ♀ (on slide).

***Peromyscopsylla udagawai* Sakaguti et Jameson, 1959**Sakaguti, K. & Jameson, E. W. Jr. 1959, *Jpn. J. Sanit. Zool.*,  
10(3): 158.

PARATYPE: 1 ♀ (on slide).

## LITERATURE CITED

- Brown, B. V.**  
1989. Testing phylogenetic hypotheses: New species of *Gymnophora* Macquart (Diptera: Phoridae) from Japan and Nepal, with an updated world classification. *Can. J. Zool.*, 67(10): 2543-2556.
- Cantrell, B. K. & Shima, H.**  
1991. Additional species of *Chaetophthalmus* Brauer and Bergenstamm (Diptera: Tachinidae) from Papua New Guinea. *J. Aust. Ent. Soc.*, 30: 49-59.
- Cerretti, P.**  
2005. Revision of the West Palaearctic species of the genus *Pales* Robineau-Desvoidy (Diptera: Tachinidae). *Zootaxa*, 885: 1-36.
- Esaki, T. & Shirôzu, T.**  
1943. New species and subspecies of the subfamily Theclinae from Formosa (Lycanidae). [in Japanese] *Zephyrus*, 9(3): 151-156, ill.
- Fujioka, T.**  
1970. The geographical variations of *Anthocaris cardamines* Linnaeus and *Carterocephalus palaemon* Pallas in Japan. [in Japanese and English] *Tyo to Ga*, 21(3/4): 123-133.
- Gaedike, R.**  
2000. New and interesting moths from the east Palaearctic (Lepidoptera: Tineidae), contribution to the knowledge eastern Palaearctic insects (11). *Beitr. Ent.*, 50: 357-384.
- Hayashi, T.**  
1991. Records of the genus *Lotophila* Lioy from the Oriental region, with the description of a new subspecies of *L. pallida* Hayashi (Diptera, Sphaeroceridae). *Jpn. J. Sanit. Zool.*, 42(1): 9-13.
1994. The genus *Paralimosina* from Nepal and Pakistan, excluding *P. eximia* species group (Diptera, Sphaeroceridae). *Jpn. J. Sanit. Zool.*, 45, Suppl.: 31-54.
- Hayashi, M. & Makihara, H.**  
1981. The Cerambycidae (Coleoptera) of Nepal collected by the Kyushu University Scientific Expedition. *Esakia*, 17: 183-200.
- Herting, B.**  
1981. Typenrevisionen einiger paläarktischer Raupenfliegen (Dipt. Tachinidae) und Beschreibungen neuer Arten. *Stuttg. Beitr. Naturk.*, No. 346: 1-21.
- Inoué, M.**  
1942. A new subspecies of *Thecla enthea* Janson. [in Japanese] *Ent. World*, 10(104): 644-646.
- Iwasa, M.**  
1981. Studies on the Sepsidae from Japan (Diptera) II. Notes on the genus *Themira* Robineau-Desvoidy with descriptions of two new species. *Kontyû*, 49(1): 45-53.
1984. The Sepsidae from Nepal, with descriptions of eight new species (Diptera). *Kontyû*, 52 (1), 72-93.
1991. Taxonomic study of the genus *Psila* Meigen (Diptera, Psilidae) from Japan, Sakhalin and the Kurile Islands. *Jpn. J. Ent.*, 59(2): 389-408.
1993. The genus *Loxocera* Meigen (Diptera, Psilidae) from Nepal, with descriptions of two new species. *Jpn. J. Ent.*, 61(2): 243-249.
1994. Five new species of the genus *Psila* Meigen (Diptera, Psilidae) from Nepal. *Jpn. J. Ent.*,

- 62(4): 693-700.
1986. Five new species of the genus *Chyliza* Fallén (Diptera, Psilidae) from Nepal. *Studia Dipter.*, 3(2): 201-207.
- Jameson, E. W. Jr. & Sakaguti, K.**
1959. A new flea from the streaked shearwater, *Puffinus leucomelas*, on Kanmuri-Jima, Wakasa Bay. [in Japanese and English] *Jpn. J. Sanit. Zool.*, 10(4): 244-251.
- Kano, R.**
1962. Notes on flies of medical importance in Japan. Part (XVI). Three new species of the genus *Melinda* (Calliphoridae, Diptera) from Japan. *Jpn. J. Sanit. Zool.*, 13: 1-6.
- Kano, R. & Shinonaga, S.**
1966. Notes on the flies of medical importance in Japan (Part XXV). Descriptions of two species belonging to the genus *Protocalliphora* (Diptera: Calliphoridae). *Jpn. J. Sanit. Zool.*, 17: 164-168.
- Kashiwai, N.**
1982. A new species of the genus *Ypthima* Hübner from Mindanao, the Philippines (Lepidoptera, Satyridae). *Tyo to Ga*, 33(1/2): 44-50.
- Kimoto, S.**
2001. The Chrysomelidae (Insecta: Coleoptera) collected by the Kyushu University Scientific Expedition to the Nepal Himalaya in 1971 and 1972. *Bull. Kitakyushu Mus. Nat. Hist.*, 20: 17-80.
- Kurahashi, H.**
1992. Four new species of the Nepalese blow flies (Diptera, Calliphoridae). *Jpn. J. Ent.*, 60(3): 581-592.
- Masunaga, K.**
2000. Two new species of the torrenticolous genus *Diostracus* Loew (Diptera: Dolichopodidae), with biogeographical notes on the Japanese fauna. *Ent. Sci.*, 3(4): 675-685.
- Masunaga, K. & Saigusa, T.**
1998. A taxonomic study of the genus *Medetera* Fischer von Waldheim of Japan (Diptera: Dolichopodidae). *Ent. Sci.*, 1(4): 611-621.
- Matsumura, S.**
1919. Thousand insects of Japan, Addit., Vol. 3. Keiseisha, Tokyo.
- Merz, B. & Sueyoshi, M.**
2002. Descriptions of new species of Pallopteridae (Diptera) from Taiwan, Korea and Japan, and notes on some other species from Eastern Asia. *Studia Dipter.*, 9(1): 293-306.
- Mesnil, L. P.**
1980. Die Fliegen der Palaearktischen Region, 64f. Dexiinae. pp. 1-52.
- Mesnil, L. P. & Shima, H.**
1977. A new genus and species of the Japanese Tachinidae (Diptera) reared from the nest of a solitary wasp *Symmorphus* sp. (Hymenoptera, Vespidae). *Kontyû*, 45(1): 36-42.
1978. New and little known Tachinidae from Japan (Diptera). *Kontyû*, 46(2): 312-328.
1979. New tribe, genera and species of Japanese and Oriental Tachinidae (Diptera), with note on synonymy. *Kontyû*, 47(4): 476-486.
- Morinaka, S.**
1990. A new subspecies of *Charaxes harmodius* C. and R. Felder from Bali (Lepidoptera, Nymphalidae). [in Japanese and English] *Bull. Biogeogr. Soc. Jpn.*, 45(13): 87-90.
- Morinaka, S., Mastrigt, H. J. G. Van and Sibatani, A.**
1991. A review of *Delias eichhorni* Rothschild, 1904 and some of its allies from Irian Jaya (Lepidoptera, Pieridae). *Biogeogr. Soc. Jpn.*, 46(16): 133-149.
1993. A study of the *Delias eichhorni*-complex from New Guinea Island (Lepidoptera; Pieridae) (I). *Biogeogr. Soc. Jpn.*, 48(1): 17-26.
- Morinaka, S. & Kôda, N.**
1990. A new subspecies of *Euthalia mahadeva* Moore from Bali (Lepidoptera, Nymphalidae). *Bull. Biogeogr. Soc. Jpn.*, 45(12): 81-85.
- Morinaka, S. & Yata, O.**
1994. A new subspecies of *Prioneris autothisbe* (Hübner) (Lepidoptera, Pieridae) from Bali, Indonesia. *Jpn. J. Ent.*, 62(1): 22-28.
- Nakamura, T. & Saigusa, T.**
1996. Two new species of *Trichocera* (*Metatrachocera*) (Diptera: Trichoceridae) from Japan. *Jpn. J. Ent.*, 64(4): 795-804.
1997. A revision of the Japanese species of the subgenus *Metatrachocera* Dahl, 1966 of the genus *Trichocera* Meigen, 1803 (Diptera: Trichoceridae). *Natur. Hum. Activ.*, 2: 59-89.
- Nakayama, H. & Shima, H.**
2001. A new species of the genus *Hypocera* Lioy from Asia (Diptera: Phoridae). *Ent. Sci.*, 4(3): 379-386.
2002. Systematic study of the genus *Peromittra* Enderlein of Japan (Diptera: Phoridae). *Ent. Sci.*, 5(1): 63-76.
2004. Revision of the genus *Stichillus* Enderlein of Japan (Diptera: Phoridae). *Ent. Sci.*, 7(1): 85-95.
- Nire, K.**
1920. On new species and subspecies of butterflies native to Japan. [in Japanese] *Zool. Mag.*, 32: 373-377.
- Nishida, K.**
1991. Studies on Fanniidae (Diptera) from the Oriental Region I. Three new species of the *Fannia mollissima* subgroup from Nepal. *Jpn. J. Ent.*, 59(1): 87-98.
1994. The Fanniidae from Nepal (Diptera). *Jpn. J. Sanit. Zool.*, 45, Suppl.: 81-97.
- Nomura, K.**
1931. Notes on butterflies collected in Pianen (Formosa), Together with the distribution of alpine butterflies in the valley of Tarkokci (Formosa). [in Japanese] *Zephyrus*, 3(1): 43-62.
- Ohbayashi, N.**
2003. A new Lepturine species of the genus *Eustrangalis* (Coleoptera, Lepturinae) from Laos. *Spec. Bull. Jpn. Soc. Coleopterol. [Satomius]*, 6: 361-368.
- Ozerov, A. L. & Sueyoshi, M.**
2001. Two new species of *Paradryomyza* Ozerov (Diptera, Dryomyzidae) from Asia. *Studia Dipter.*, 8(2): 563-570.
- Pape, T.**
1998. A new genus of Paramacronychiinae (Diptera: Sarcophagidae), argued from a genus-level cladistic analysis. *Syst. Ent.*, 23 (2): 187-200.
- Pape, T. & Kurahashi, H.**
1994. First records of Rhinophoridae (Insecta, Diptera) from Japan. *Jpn. J. Ent.*, 62(3): 475-481.
- Pape, T. & Shima, H.**
1993. A new genus of Tachinidae from the Philippines (Diptera). *Tijdschr. Ent.*, 136 (1993): 77-82.
- Saigusa, T.**
1984. The genus *Diostracus* from Nepal (Diptera, Dolichopodidae). *Bull. Kitakyushu Mus. Nat. Hist.*, 5: 1-74.
- Sakaguti, K.**
1960. On the genus *Peromyscopsylla* of Japan, with description of a new subspecies (Siphonaptera). Studies on the Japanese Siphonaptera VIII. *Jpn. J. Sanit. Zool.*, 11(3): 124-136.

**Sakaguti, K. & Jameson, E. W. Jr.**

1959. Two new fleas (Siphonaptera) from the mountains of central Honshu, Japan. *Ent. Rev. Japan*, **10**(1): 11-15.
1959. Two new fleas of the genus *Peromyscopsylla* (Siphonaptera). *Jpn. J. Sanit. Zool.*, **10**(3): 156-159.

**Sakai, M. & Saigusa, T.**

1999. A new species of *Obesoceras* Petersen, 1957 from Japan (Lepidoptera: Tineidae). *Ent. Sci.*, **2**(3): 405-412.
2002. Revisional study of the genus *Crypsithyris* Meyrick, 1907 (Tineidae, Tineinae) in Japan. *Tyo to Ga*, **53**(1): 69-82.

**Sasaki, K.**

1982. A new species of the Genus *Neptis* Fabricius (Lepidoptera, Nymphalidae) from West Malaysia. *Tyo to Ga*, **33**(1/2): 40-43.

**Schaefer, P. W. & Shima, H.**

1981. Tachinidae parasitic on the Lymantriidae in Japan. *Kontyû*, **49**(2): 367-384.

**Schroeder, H., Treadaway, C. G. & Nuyda, J.**

1990. Neue *Eurema*-Formen von den Philippinen (Lepidoptera, Pieridae). *Ent. Zeits.*, **100**(8): 140-148.

**Shima, H.**

1968. A new species of the genus *Frontina* Meigen from Kyushu, Japan (Diptera: Tachinidae). *Kontyû*, **36**(4): 355-358.
1968. Descriptions of two new species of the genus *Pexopsis* Brauer & Bergenstamm from Japan (Diptera: Tachinidae). *Mushi*, **42**(2): 9-14.
1968. Study on the Japanese *Calocarcelia* Townsend and *Eucarcelia* Baranov (Diptera: Tachinidae). *J. Fac. Agric. Kyushu Univ.*, **14**(4): 507-533.
1969. A new species of the genus *Carceliopsis* Townsend (Diptera: Tachinidae) reared from *Dendrolimus spectabilis* Butler (Lepidoptera: Lasiocampidae). *Kontyû*, **37**(2): 233-236.
1969. Notes on the Japanese *Carcelia* and *Calocarcelia* (Diptera: Tachinidae). *Kontyû*, **37**(2): 237-246.
1970. Notes on some Japanese Siphonini (Diptera, Tachinidae). *J. Fac. Agric. Kyushu Univ.*, **16**(2): 179-192.
1973. New species of the genus *Chaetexorista* Brauer & Bergenstamm from Japan (Diptera: Tachinidae). *Sieboldia*, **4**(3): 147-152.
1976. Discovery of the Australasian genus *Mycteromyiella* Mesnil (Diptera, Tachinidae) from Japan, with descriptions of new species from Japan, Malay and Borneo. *Kontyû*, **44**(3): 311-322.
1979. New genera, species and subspecies of Oriental Tachinidae (Diptera). *Bull. Nat. Sci. Mus., Ser. A (Zool.)*, **5**(2): 135-152.
1979. Study on the tribe Blondeliini from Japan (Diptera: Tachinidae) I. *Kontyû*, **47**(2): 126-138.
1979. Study on the tribe Blondeliini from Japan (Diptera: Tachinidae) II. Revision of the genera *Trigonospila* Pokorný and *Lixophaga* Townsend from Japan. *Kontyû*, **47**(3): 298-311.
1980. A new species of *Paratrypha* (Diptera, Tachinidae) parasitic on noctuid lichen feeders in Japan, with special reference to the tribe Ethillini. *Kontyû*, **48**(1): 6-14.
1980. Study on the tribe Blondeliini from Japan (Diptera: Tachinidae) III. Descriptions of a new genus and two new species from Japan, Korea and Nepal, with notes on *Drinomyia bicoloripes* (Mesnil). *Kontyû*, **48**(2): 259-266.
1981. A study of the genus *Phebellia* Robineau-Desvoidy from Japan (Diptera: Tachinidae) I. Descriptions of new species.

*Bull. Kitakyushu Mus. Nat. Hist.*, **3**: 53-67.

1981. Description of a new species of *Peribaea* from New Guinea, with notes on *Peribaea orbata* (Diptera: Tachinidae). *Pacif. Ins.*, **23**(3-4): 445-450.
1983. A new species of *Oxyphyllomyia* (Diptera, Tachinidae) from Nepal, with reference to the phylogenetic position of the genus. *Ann. Zool. Jpn.*, **56**(4): 338-350.
1983. Study on the tribe Blondeliini from Japan (Diptera: Tachinidae) IV. A revision of the genus *Vibrissina* Rondani. *Kontyû*, **51**(4): 635-646.
1984. Study on the tribe Blondeliini from Japan (Diptera: Tachinidae) V. The genera *Blondelia* Robineau-Desvoidy and *Compsilura* Bouché. *Kontyû*, **52**(4): 540-552.
1984. The genus *Paradrino* from Japan and the Indo-Australasian region (Diptera: Tachinidae). *Int. J. Ent.*, **26**(1-2): 143-156.
1985. Study on the tribe Blondeliini from Japan (Diptera, Tachinidae) VI. A revision of the genus *Uromedina* Townsend. *Kontyû*, **53**(1): 97-111.
1985. The genus *Campylocheta* (Diptera: Tachinidae) from Japan. *Syst. Ent.*, **10**: 105-121.
1986. A systematic study of the genus *Limnaemya* Robineau-Desvoidy from Japan and the Oriental region (Diptera: Tachinidae). *Sieboldia*, **5**(1): 1-96.
1987. A revision of the genus *Dexiomimops* Townsend (Diptera, Tachinidae). *Sieboldia*, **Suppl.** (March, 1987): 83-96.
1987. A revision of the genus *Isosturmia* Townsend (Diptera, Tachinidae). *Bull. Kitakyushu Mus. Nat. Hist.*, **6**: 213-237.
1988. Some remarkable new species of Tachinidae (Diptera) from Japan and the Indo-Australian region. *Bull. Kitakyushu Mus. Nat. Hist.*, **8**: 1-37.
1991. Study on the tribe Blondeliini from Japan (Diptera, Tachinidae) VII. *Jpn. J. Ent.*, **59**(1): 67-86.
1994. Three remarkable new species of Tachinidae (Diptera) from South Asia. *Jpn. J. Sanit. Zool.*, **45**, **Suppl.**: 277-286.
1996. A systematic study of the genus *Cavillatrix* Richter (Diptera, Tachinidae). *Bull. Grad. Schl. Soc. Cult. Stud., Kyushu Univ.*, **2**: 133-148.
1996. A systematic study of the tribe Winthemiini from Japan (Diptera, Tachinidae). *Beitr. Ent.*, **46** (1): 169-235.
1997. Taxonomic notes on Oriental Tachinidae (Insecta: Diptera) I: Blondeliini. *Bull. Grad. Schl. Soc. Cult. Stud., Kyushu Univ.*, **3**: 169-186.
1998. Taxonomic notes on Oriental Tachinidae (Insecta: Diptera) II: Genus *Thecocarcelia* Townsend. *Bull. Grad. Schl. Soc. Cult. Stud., Kyushu Univ.*, **4**: 147-160.

**Shima, H. & Chao, C-m.**

1988. A new genus and six new species of the tribe Goniini (Diptera: Tachinidae) from China, Thailand and New Guinea. *Syst. Ent.*, **13**: 347-359.
1992. New species of Tachinidae (Diptera) from Yunnan province, China. *Jpn. J. Ent.*, **60**(3): 633-645.

**Shima, H., Chao, C-m. and Zhang, W-X.**

1992. The genus *Winthemia* (Diptera, Tachinidae) from Yunnan Province, China. *Jpn. J. Ent.*, **60**(1): 207-228.

**Shima, H. & Tachi, T.**

2002. A new species of the genus *Sturmia* Robineau-Desvoidy (Diptera: Tachinidae)



- parastic on the chestnut tiger butterfly, *Parantica sita* (Lepidoptera: Danaidae) in Japan. *Ent. Sci.*, 5(3): 297-304.
- Shinonaga, S. & Singh, M. M.**  
1994. Muscidae of Nepal (Diptera) I. Muscinae, Stomoxyinae and Phaoniinae. *Jpn. J. Saint. Zool.*, 45, Suppl.: 99-177.
- Shirôzu, T.**  
1953. New or little known butterflies from the North Eastern Asia, with some synonymic notes. I. *Sieboldia*, 1(2): 149-159.  
1957. Two new subspecies of *Erebia niponica* Janson from Honshu, Japan (Lepidoptera, Satyridae). *Sieboldia*, 2(1): 39-40.  
1962. A new subspecies of *Coreana raphaelis* Oberth. From Yamagata prefecture, Japan. [in Japanese and English] *Tyo to Ga*, 12(3): 48-50.
- Shirôzu, T. & Chung, W.**  
1958. *Euthalia malapana* n. sp., a new nymphalid butterfly from Formosa. [in Japanese and English] *Tyo to Ga*, 9(2): 17-19.
- Shirôzu, T. & Nanba, M.**  
1973. A new subspecies of *Strymonidia iyonis* Ota et Kusunoki from Honshu, Japan. [in Japanese and English] *Tyo to Ga*, 23(3/4): 65-67.
- Shirôzu, T. & Saigusa, T.**  
1962. Hesperidae & Lycaenidae collected by the Osaka Univ. Biol. Exped. to Southeast Asia 1957-1958. *Nature Life Southeast Asia*, 2: 25-94.  
1970. A new nymphalid butterfly from Luzon of the Philippines. *Tyo to Ga*, 21(3/4): 82-83.
- Shirôzu, T. & Shima, H.**  
1977. New species and subspecies of the genus *Ypthima* Hübner from Southeast Asia (Lepidoptera, Satyridae). *Kontyû*, 45(4): 501-509.
- Shirôzu, T. & Yata, O.**  
1973. The genus *Eurema* of South Viet-Nam and Cambodia (Lepidoptera: Pieridae). *Sieboldia*, 4(3): 121-135.  
1977. Two new species of the genus *Eurema* (Lepidoptera, Pieridae) from Indonesia and the Philippines. *Kontyû*, 45(3): 338-348.  
1981. Ten new species of the genus *Eurema* (Lepidoptera, Pieridae) from the Indo-Australian region. *Tyo to Ga*, 32(1/2): 49-62.
- Sueyoshi, M.**  
1998. A revision of the genus *Tephritis* Latreille (Diptera: Tephritidae) from Japan. *Ent. Sci.*, 1(1): 115-128.  
2001. A revision of Japanese Sciomyzidae (Diptera), with descriptions of three new species. *Ent. Sci.*, 4(4): 485-506.  
2003. A taxonomic review of Japanese *Asteia* (Diptera: Acalyptrata: Asteiidae). *Eur. J. Entmol.*, 100: 609-623.
- Sueyoshi, M. & Mathis, W. N.**  
2004. A new species of *Cyamops* Melander 1913 (Diptera: Perisclididae) from Japan and a review of Japanese Perisclididae. *Proc. Entmol. Soc. Wash.*, 106(1): 74-84.
- Sueyoshi, M. & Roháček, J.**  
2003. Anthomyzidae (Diptera: Acalyptrata) from Japan and adjacent areas. *Ent. Sci.*, 6: 17-36.
- Tachi, T. & Shima, H.**  
1998. A systematic study of the genus *Actia* Robineau-Desvoidy of Japan (Diptera: Tachinidae). *Ent. Sci.*, 1(3): 441-463.  
2000. Taxonomic study of the genus *Ceromya* Robineau-Desvoidy of Japan. *Beitr. Ent.*, 50(1): 129-150.  
2002. Systematic study of the genus *Peribaea* Robineau-Desvoidy of East Asia (Diptera: Tachinidae). *Tijdschr. Ent.*, 145: 115-144.
2005. Revision of the subgenus *Ceranthis* Robineau-Desvoidy of the genus *Siphona* Meigen of Japan (Diptera: Tachinidae). *Ent. Sci.*, 8(2): 189-200.
- Takei, S. & Yamamoto, A.**  
1979. A new subspecies of *Parantica dannatti* (Talbot) from northeastern Mindanao, the Philippines (Lepidoptera: Danaidae). *Tyo to Ga*, 30(1/2): 93-96.
- Uémura, Y.**  
1982. Studies on the Celebesian *Pandocus*-group Shirôzu & Shima, 1979, section of the satyrid genus *Ypthima* Hüber (Lepidoptera). *Mem. Tsukada Coll.*, (4): 38-44.
- Uémura, Y. & Yamaguchi, S.**  
1982. A revisional study on the genus *Acrophtalmia* Felder (C.) & Felder (R.) (Lepidoptera: Satyridae). [in Japanese and English] *Mem. Tsukada Coll.*, (4): 26-37.
- Wang, M., Sasaki, K., Yu-Feng, H. and Yata, O.**  
2003. Description of a new species of the genus *Neptis* Fabricius from Taiwan, China. *Butterflies*, 37: 8-12.
- Yago, M.**  
2002. Comparative morphology and identification of the subgenus *Kuhua*, with description of a new species from Vietnam (Lepidoptera, Lycaenidae, *Heliophorus*). *Tijdschr. Ent.*, 145: 145-171.  
2004. A new species of *Horaga* Moore (Lepidoptera, Lycaenidae, Theclini), with a key to the species of the subtribe Horagina. *Tyo to Ga*, 55(1): 13-25.
- Yago, M. & Nakanishi, A.**  
2003. A new species of *Heliophorus* Geyer from Nepal, with a key to the Nepalese species (Lepidoptera, Lycaenidae). *Bull. Soc. ent. Fr.*, 108(1), 2003: 27-34.
- Yago, M., Saigusa, T. and Nakanishi, A.**  
2002. A revision of the *Heliophorus kohimensis* group (Lepidoptera: Lycaenidae). *Ent. Sci.*, 5(3): 375-388.
- Yamaguchi, S. & Aoki, T.**  
1982. The species of the genus *Ragadia* Westwood (Lepidoptera: Satyridae) in the Philippines and Palawan. [in Japanese and English] *Mem. Tsukada Coll.*, (4): 17-25.
- Yamamoto, A.**  
1977. A new species of *Graphium* from Mindanao (Lepidoptera: Papilionidae). *Tyo to Ga*, 28(3): 87-88.
- Yamamoto, A. & Takei, S.**  
1980. New subspecies of *Appias phoebe* and *Parantica dannatti* from Mindanao, the Philippines (Lepidoptera: Pieridae and Danaidae). *Tyo to Ga*, 31(1/2): 57-59.  
1982. A new species of the genus *Delias* from Mindanao, the Philippines (Lepidoptera, Pieridae). *Tyo to Ga*, 32(3/4): 160-163, Ill.
- Yamauchi, T. & Yata, O.**  
1999. A new subspecies of *Gandaca harina* (Horsfield, [1829]) (Lepidoptera, Pieridae) from Simuk, Indonesia. *Tyo to Ga*, 50(4): 243-246.
- Yamauchi, T., Yata, O. and Peggie, D.**  
2003. A new subspecies of *Delias benasu* (Lepidoptera, Pieridae) from Mt Tambusisi, northeastern Sulawesi, Indonesia. *Tyo to Ga*, 54(2): 69-72.
- Yasunaga, T.**  
1994. *Pinalitus* Kelton (Heteroptera, Miridae) and its allied genera of Japan, with descriptions of new genera and species. *Jpn. J. Ent.*, 62(1): 115-131.
- Yasunaga, T. & Leu, N.**

1994. A new genus and species for the Mirine plant bug (Heteroptera, Miridae) found in the Ryukyus, Japan and Guangxi Zhuang Autonomous region, China. *Proc. Japan Soc. Syst. Zool.*, **50**: 41-45.
- Yata, O.**
1981. Two new species and two new subspecies of pierid butterflies from Indonesia and the Philippines. *Mem. Tsukada Coll.*, **(3)**: 19-27.
1990. A new *Eurema* species from south India (Lepidoptera, Pieridae). *Esakia, Special Issue 1*: 161-165.
1991. A revision of the Old World species of the genus *Eurema* Hübner (Lepidoptera, Pieridae). Part II. Description of the *smilax*, the *hapale*, the *ada* and the *sari* (part) groups. *Bull. Kitakyushu Mus. Nat. Hist.*, **10**: 1-51.
1994. A revision of the Old World species of the genus *Eurema* Hübner (Lepidoptera, Pieridae). Part IV. Description of the *hecabe* Group (part). *Bull. Kitakyushu Mus. Nat. Hist.*, **13**: 59-105.
1995. A revision of the Old World species of the genus *Eurema* Hübner (Lepidoptera, Pieridae). Part V. Description of the *hecabe* group (part). *Bull. Kitakyushu Mus. Nat. Hist.*, **14**: 1-54.
- Yata, O. & Gaonkar, H.**
1999. A new subspecies of *Eurema andersoni* (Lepidoptera: Pieridae) from South India. *Ent. Sci.*, **2**(2): 281-285.
- Yata, O. & Kitamura, M.**
1998. A new subspecies of *Eurema hiurai* Shirôzu & Yata, 1977 from central Luzon, Philippines. *Butterflies*, **19**: 24-27.
- Yata, O. & Morinaka, S.**
1990. A new subspecies of *Eurema lacteola* (Distant, 1886) from Bali (Lepidoptera, Pieridae). *Bull. Biogeogr. Soc. Jpn.*, **45**(11): 77-80.
- Yata, O. & Treadaway, C. G.**
1982. A new subspecies of *Eurema sarilata* (Semper) from Sibuyan Island (Lepidoptera, Pieridae). *Tyo to Ga*, **33**(1/2): 26-28.
- Yoshitomi, H.**
1996. A new species of the genus *Cyphon* (Coleoptera, Scirtidae) from Japan. *Jpn. J. Syst. Ent.*, **2**(1): 97-100.
- Yoshitomi, H. & Satô, M.**
2003. Scirtidae of the Oriental region, Part 4 Genus *Elodes* (Coleoptera: Scirtidae) of Nepal. *Ent. Rev. Japan*, **58**(2): 191-199.
- Yoshizawa, K.**
1996. Taxonomic study on the family Pseudocaciliidae (Psocoptera: Psocomorpha) of Japan 2. Genara *Heterocacilius* and *Phalloacacilius*. *Jpn. J. Ent.*, **64**(1): 3-16.
1996. Taxonomic study on the family Pseudocaciliidae (Psocoptera: Psocomorpha) of Japan 3. Genara *Alloacacilius*, *Ophiodoperma* and *Pseudoscottiella*. *Jpn. J. Ent.*, **64**(2): 300-312.
1997. Psocoptera of Bangladesh collected by Prof. Emer. Katsura Morimoto, with descriptions of four new species. *Esakia*, **37**: 15-24.
1998. A new genus, *Atrichadenotecnum*, of the tribe Psocini (Psocoptera: Psocidae) and its systematic position. *Ent. Scand.*, **29**(2): 199-210.
1998. Taxonomic study of the genus *Mesopsocus* Kolbe (Psocoptera: Mesopsocidae) of Japan. *Ent. Sci.*, **1**(2): 265-269.
2001. A systematic revision of Japanese *Trichadenotecnum* Enderlein (Psocodea: 'Psocoptera': Psocidae: Ptyctini), with redefinition and subdivision of the genus. *Invert. Taxon.*, **15**: 159-204.
- Zhang, C.-T. & Shima, H.**
2005. A revision of the genus *Trixa* Meigen (Diptera: Tachinidae). *Insect Science*, **12**: 57-71.
- Ziegler, J. & Shima, H.**
1996. Tachinid flies of the Ussuri area (Diptera: Tachinidae). Contributions to the knowledge of east Palearctic insects (5). *Beitr. Ent.*, **46** (2): 379-478.

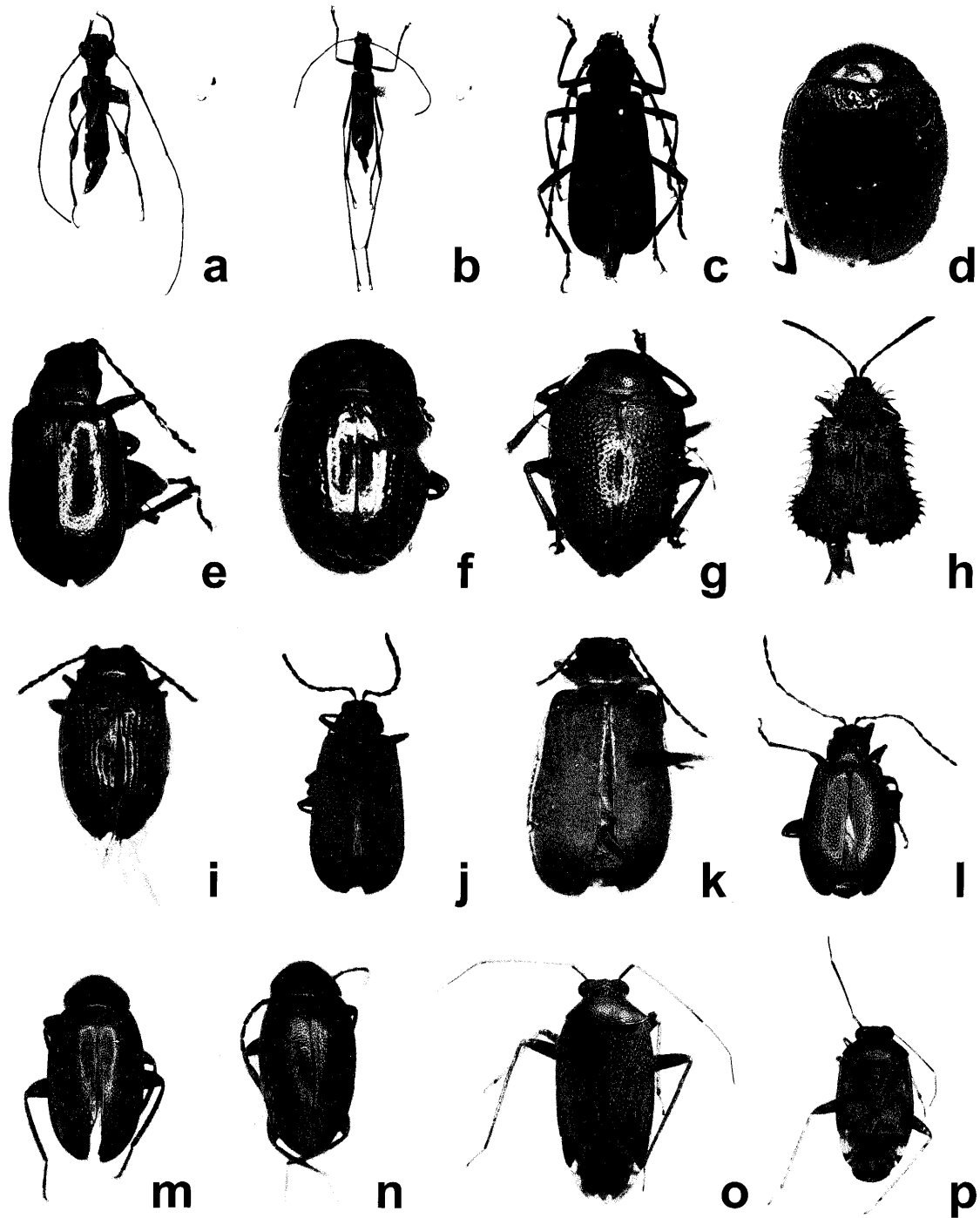


Fig. 1. Holotypes- a, *Glaphyra shimai* Hayashi et Makihara; b, *Rhaphuma nishidai* Hayashi et Makihara; c, *Rosalia (Eurybatus) nakanishii* Hayashi et Makihara; d, *Amphimela subgeminata* Kimoto; e, *Aphthona dobangensis* Kimoto; f, *Chrysolina tangalaensis* Kimoto; g, *Colaspoides nepalensis* Kimoto; h, *Dactylispa platycanthoides* Kimoto; i, *Manobia shimai* Kimoto; j, *Pyrrhalta tatesuji* Kimoto; k, *Sastracella collaris* Kimoto; l, *Stenoluperus thudamensis* Kimoto; m, *Elodes morimotoi* Yoshitomi et M. Satô; n, *Elodes nepalensis* Yoshitomi et M. Satô; o, *Yamatolygus insulanus* Yasunaga; p, *Zhengiella scutellata* Yasunaga et Lu.

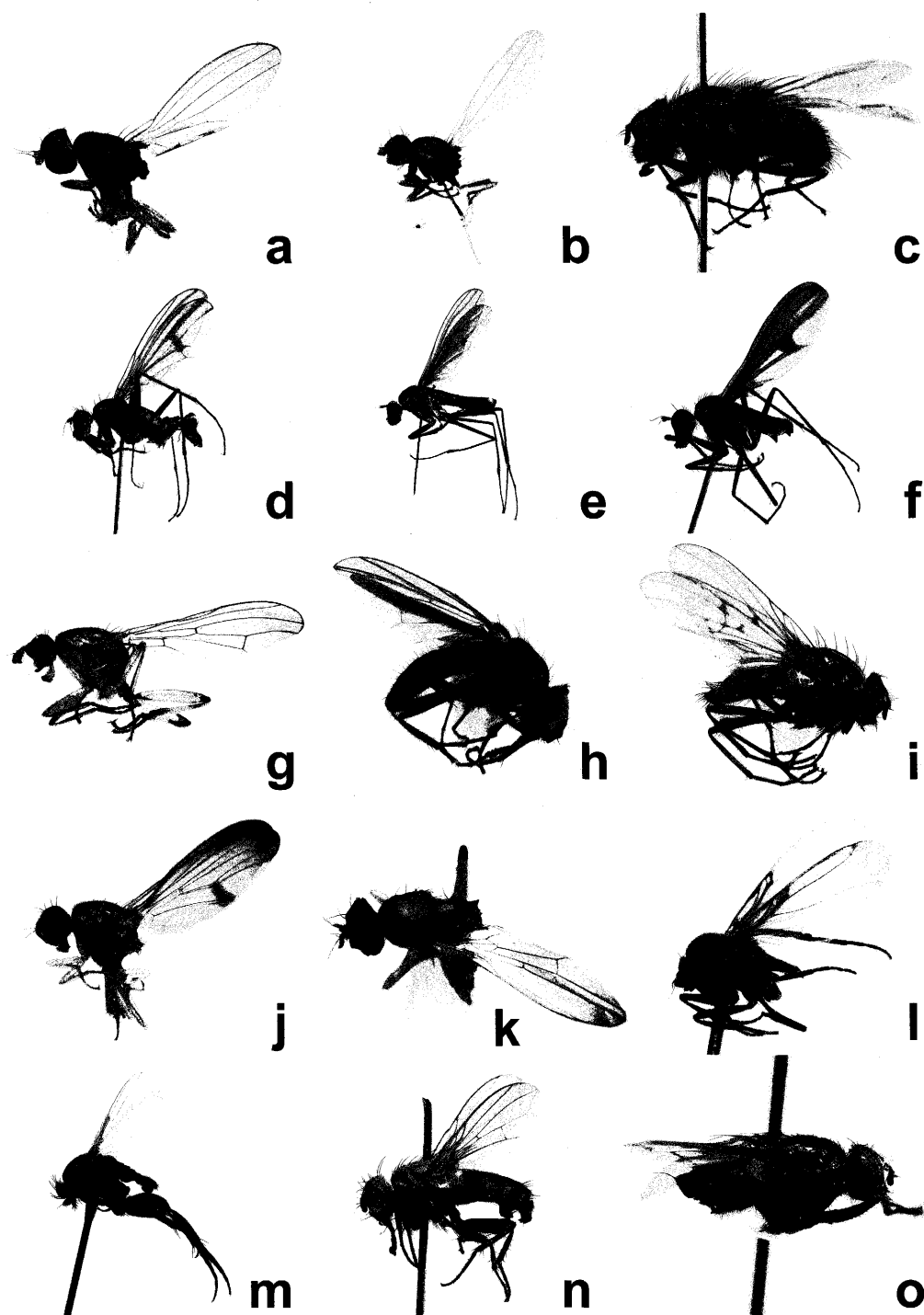


Fig. 2. Holotypes- a, *Anthomyza trifurca* Sueyoshi et Roháček ; b, *Asteia gemina* Sueyoshi; c, *Polleniopsis himalayana* Kurahashi; d, *Diostracus chaetodactylus* Saigusa; e, *Diostracus fenestratus* Saigusa; f, *Diostracus umbrinervis* Saigusa; g, *Paradryomyza orientalis* Ozerov et Sueyoshi; h, *Fannia densa* Nishida; i, *Helina spinidorsata* Shinonaga; j, *Themnosira simillima* Merz et Sueyoshi; k, *Cyamops hotei* Sueyoshi; l, *Gymnophora enigmata* Brown; m, *Peromitra fimbriata* Nakayama et Shima; n, *Oplisa japonica* Pape et Kurahashi; o, *Primorya ussuriensis* Pape.

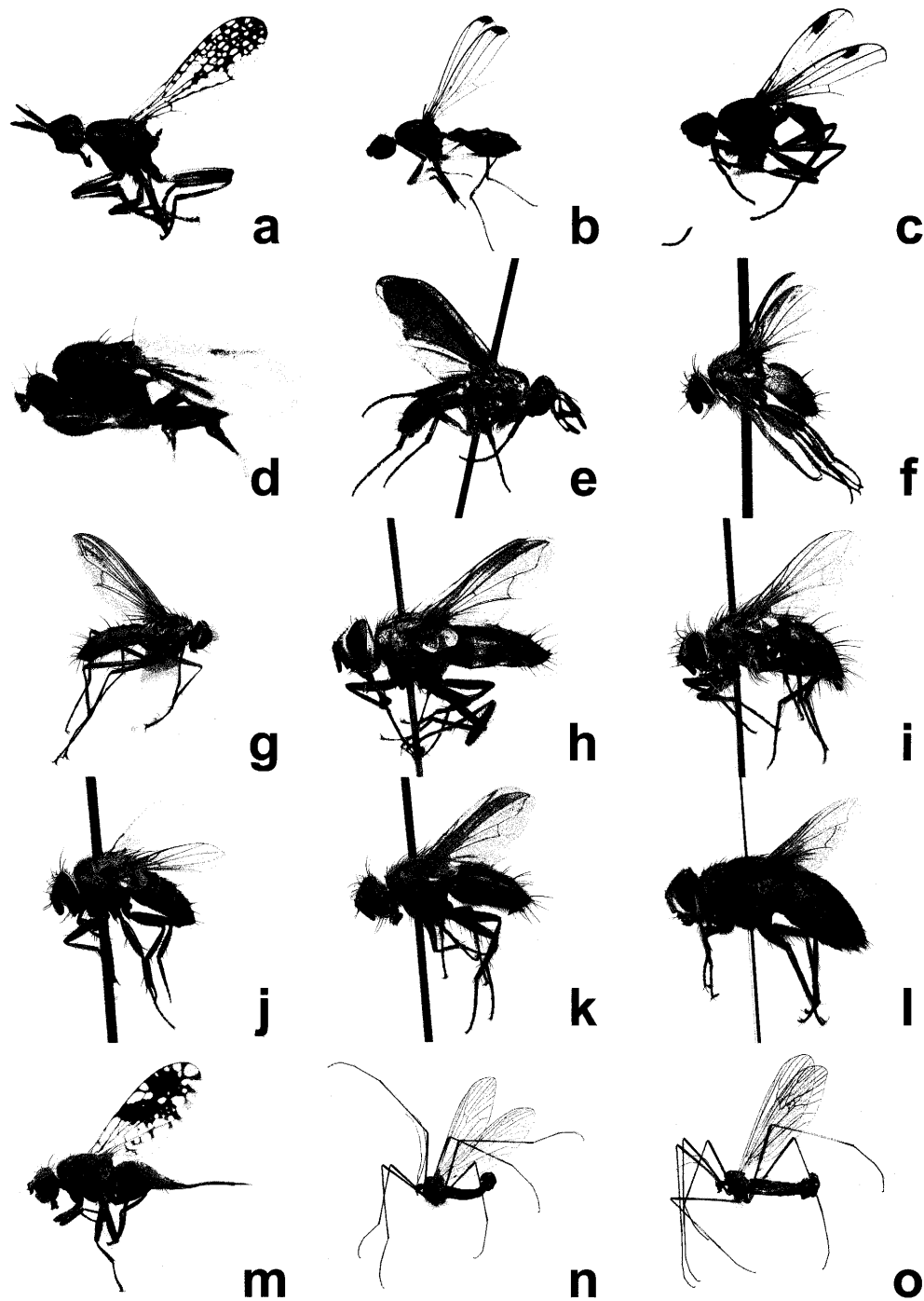


Fig. 3. Holotypes- a, *Dichetophora japonica* Sueyoshi; b, *Dicranospsis maculosa* Iwasa; c, *Sepsis alta* Iwasa; d, *Paralimosina albipes* Hayashi; e, *Aporeomyia antennalis* Pape et Shima; f, *Ceromya helvola* Tachi et Shima; g, *Leptothelaira latistriata* Shima; h, *Lixophaga latigena* Shima; i, *Oswaldia flavitibia* Shima; j, *Peribaea glabra* Tachi et Shima; k, *Vibrissina aurata* Shima; l, *Winthemia brevipennis* Shima; m, *Tephritis longicauda* Sueyoshi; n, *Trichocera (Metatrachocera) crassicauda* Nakamura et Saigusa; o, *Trichocera (Metatrachocera) monstrosa* Nakamura et Saigusa.

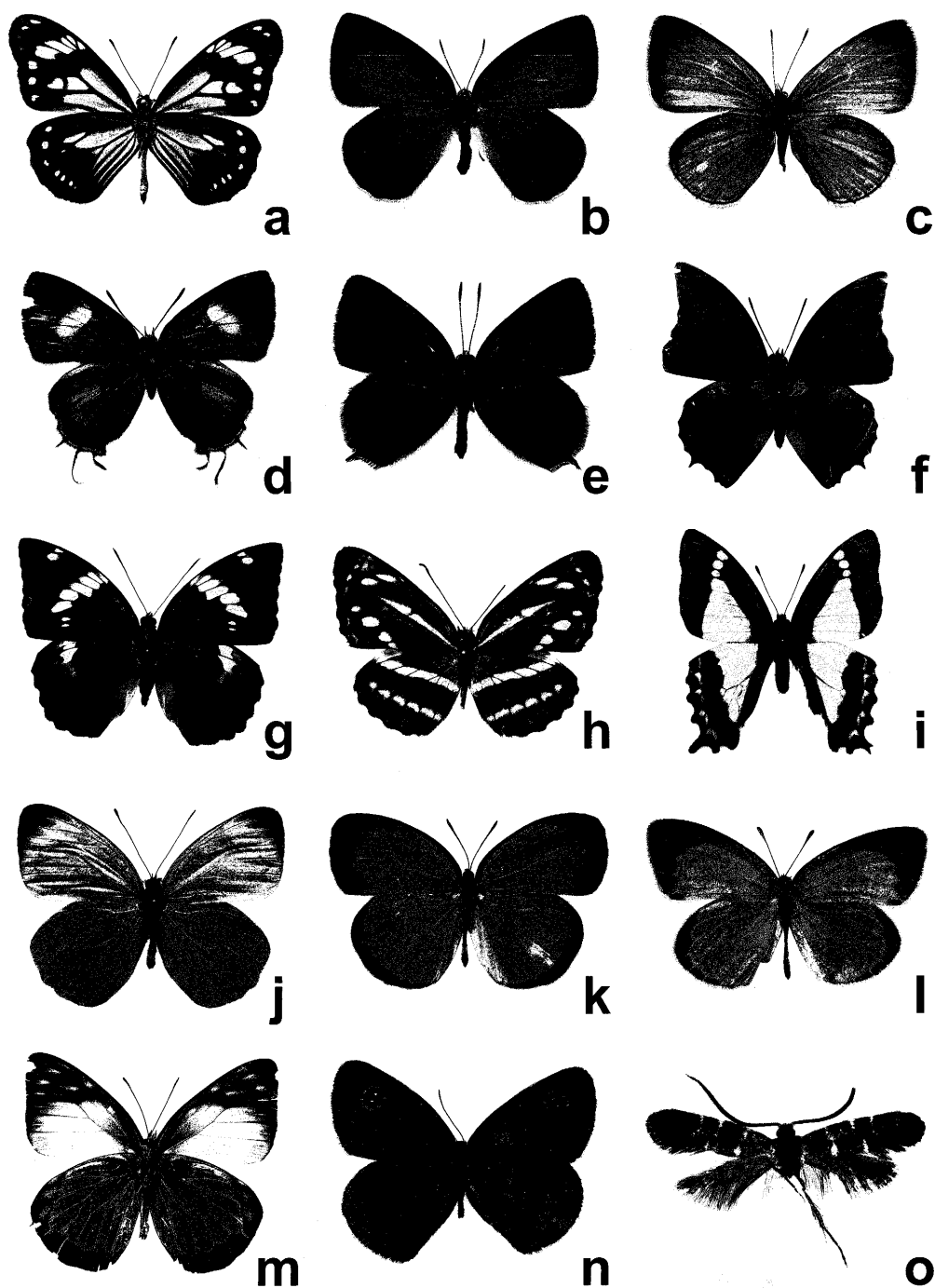


Fig. 4. Holotypes- a, *Parantica dannatti diuataensis* Takei et Yamamoto; b, *Coreana raphaelis ohruui* Shirôzu; c, *Everes (Bothrinia) celastroides* Shirôzu et Saigusa; d, *Horaga uedai* Yago; e, *Strymonidia iyonis kibiensis* Shirôzu et Nanba; f, *Charaxes harmodius lalangius* Morinaka; g, *Euthalia malapana* Shirôzu et Chung; h, *Neptis sedata* Sasaki; i, *Graphium sandawanum* Yamamoto; j, *Delias mandaya* Yamamoto et Takei; k, *Eurema alitha gunjii* Shirôzu et Yata; l, *Eurema brigitta papuana* Shirôzu et Yata; m, *Prioneris autothisbe tamblingata* Morinaka et Yata; n, *Ypthima posticalis aei* Shirôzu et Shima; o, *Eudarcia ornata* Gaedike.