



Far Eastern Entomologist

Дальневосточный энтомолог

Journal published by Far East Branch
of the Russian Entomological Society
and Laboratory of Entomology,
Institute of Biology and Soil Science,
Vladivostok

Number 248: 1-4

ISSN 1026-051X

June 2012

AN UNUSUAL NEW SPECIES OF *ANOPLOPHORA* HOPE, 1839 (COLEOPTERA: CERAMBYCIDAE) FROM GUIZHOU, CHINA

Guang-Lin Xie^{1, 2)}, Fu-Ming Shi¹⁾,* and Wen-Kai Wang²⁾

1) College of Life Sciences, Hebei University, Baoding, Hebei, 071002, P. R. China. * Corresponding author. E-mail: shfmi@yahoo.com.cn

2) College of Agriculture, Yangtze University, Jingzhou, Hubei, 434025, P. R. China.

A new cerambycid species, *Anoplophora rubidacorpora* Xie, Shi et Wang, **sp. n.**, is described and illustrated from Guizhou, China.

KEY WORDS: Cerambycidae, *Anoplophora*, new species, China.

Г.-Л. Ци^{1, 2)}, Ф.-М. Ши¹⁾, В.-К. Ван²⁾. Необычный новый вид рода *Anoplophora* Hope, 1839 (Coleoptera: Cerambycidae) из Гуанчжоу, Китай // Дальневосточный энтомолог. 2012. N 248. С. 1-4.

Из провинции Гуйчжоу в Китае описан новый для науки вид жука-усача – *Anoplophora rubidacorpora* Xie, Shi et Wang, **sp. n.**

1) Колледж Наук о жизни, Хэбэйский университет, г. Баодин, 071002, Китай.

2) Сельскохозяйственный колледж, Университет Янцзы, г. Янчжоу, 434025, Китай.

INTRODUCTION

Since Lingafelter & Hoebeke (2002) published the revision of the genus *Anoplophora* Hope, 1839, the generic and species status of all species were clarified. However, collections in China still harbour new species, indicating that the Chinese

species need further study. Herein, we describe a new species from Guizhou Province, P. R. China.

***Anoplophora rubidacorpora* Xie, Shi et Wang, sp. n.**

Figs 1, 6–8

TYPE MATERIAL. Holotype – ♂, **China:** Guizhou, Dashahe Natural Reserve, 18.VIII 2004, collected by Fu-Ming Shi. Holotype is deposited in the Entomological Museum, Yangtze University, Jingzhou, Hubei, P. R. China.

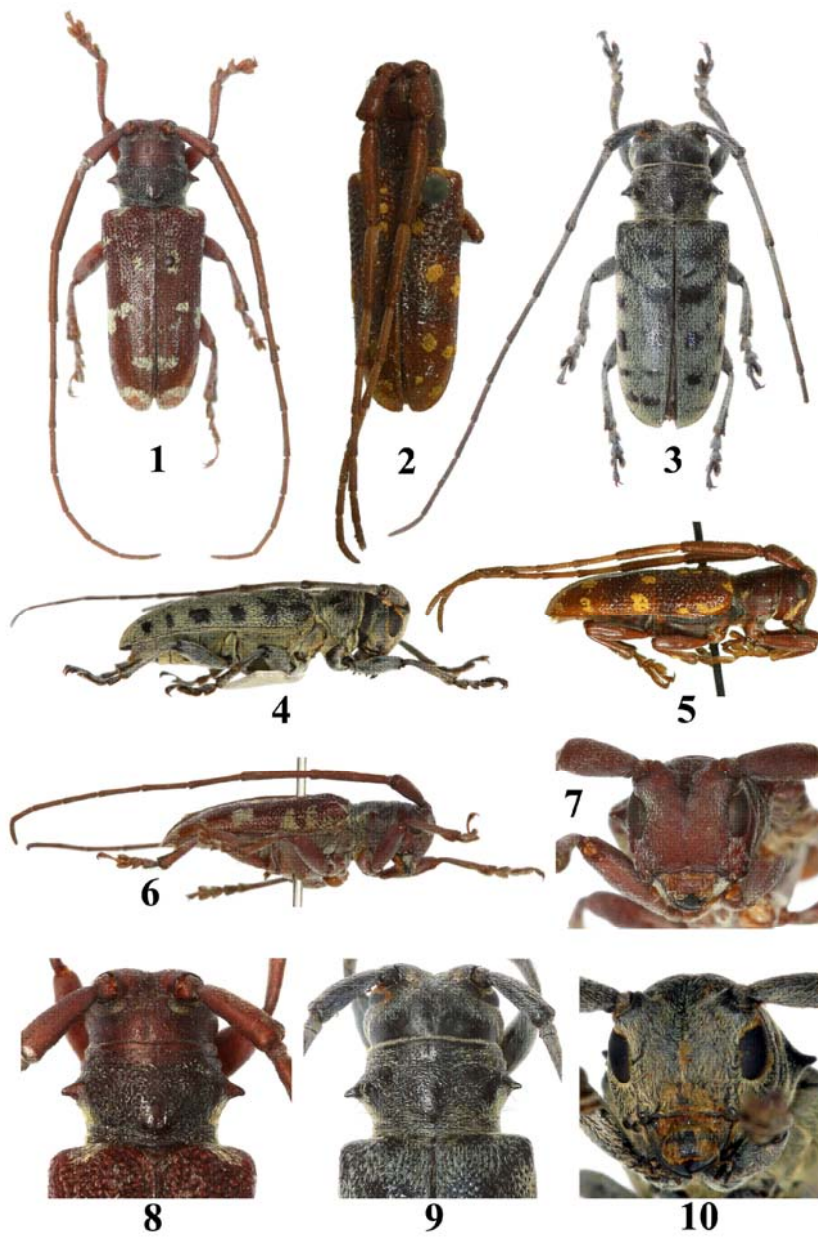
DESCRIPTION. MALE. Length 12.1 mm, humeral width 4.4 mm. Body reddish brown except pronotum blackish brown, matte except elytra slightly lustrous, covered with fine grayish-white to grayish-yellow pubescence. Pubescence on ventral surface denser and more uniform, pubescence on dorsal surface forming maculations as follows: posterior of lateral pronotal tubercle with a vague longitudinal stripe; base of elytron with a maculation at inner side of humerus; outer margin of elytron with four patches arranged in a longitudinal row, first two adjacent, the first patch extending forward along the edge, the third rather transverse and more irregular, extending to the center of elytron; basal fourth of elytron with a small patch at center, apical fourth with a transverse patch at suture, apex of elytron with an annular maculation. Elytron furnished with one black semirecumbent bristle-like short hair in each puncture. Frons longer than broad, slightly convex, with a smooth longitudinal middle sulcus extending to occiput. Eye finely faceted, lower lobe about 1.5 times as long as wide, slightly longer than gena. Vertex depressed, occiput coarsely and shallowly punctate. Antenna about 1.8 times as long as body, antennal tubercles rather prominent, moderately separated; scape cylindrical, robust, thickened apically; third antennomere longest, about 1.7 times as long as scape; antennomeres 4–10 successively shorter in length, antennomere 11 as long as 7th. Pronotum about 1.8 times broader than long, anterior and posterior margin with two transverse grooves respectively; disc with coarse rugulose punctures, and with a smooth callus basally; lateral tubercle developed, obtuse. Elytra widest at base, slightly narrow posteriorly, basal fourth with partly coalesced coarse granules extending to the middle after humeri; punctures smaller and shallower after basal fourth of elytra. Procoxal cavity closed posteriorly. Mesosternal intercoxal process moderately elevated. Legs short, stout, mesotibia with an oblique groove near external apex.

FEMALE. Unknown.

DISTRIBUTION. China: Guizhou.

ETYMOLOGY. The new species is named for the reddish brown body.

DISCUSSION. The new species differs remarkably from other members in *Anoplophora* by its reddish brown integument with feeble luster, while others usually have black integument with strongly luster. This species is very allied to *A. lurida* (Pascoe, 1856) (Figs. 3, 4, 9, 10) as the similar small body size and rugulose-punctate pronotum, it can be distinguished from that species by its reddish brown integument covered with grayish-white or grayish-yellow pubescence versus black integument covered with grayish-blue pubescence, elytra mostly glabrous with maculations of pale pubescence versus elytra mostly pubescent with glabrous black maculations.



Figs. 1-10. Habitus of *Anoplophora* and *Paragnia* spp. 1, 6-8 – *A. rubidacorpora* sp. n.: 1 – dorsal view; 6 – lateral view; 7 – frontal view of head; 8 – dorsal view of pronotum; 2, 5 – *P. fulvomaculata*: 2 – dorsal view; 5 – lateral view; 3 – 4, 9 – 10 – *A. lurida*: 3 – dorsal view; 4 – lateral view; 9 – dorsal view of pronotum; 10 – frontal view of head.

The new species also shares the similar appearance with *Paragnia fulvomaculata* Gahan, 1893 (Figs. 2, 5) as the small body size, rufescent integument and similar arrange of pubescent maculations on dorsal surface. It can be distinguished from the latter by its developed lateral pronotal tubercle versus no lateral tubercle, pubescent maculations on dorsal surface pale versus golden-tawny, third antennomere distinctly thinner than scape versus almost as thick as scape.

S.W. Lingafelter indicated that the new species is of a group that is not typical of the genus *Anoplophora*, like *A. lurida* (personal correspondence). However, it has the characters such as lateral pronotal tubercle developed, cicatrix of antennal scape completely closed, mesosternal intercoxal process moderately tuberculate, procoxal cavity closed posteriorly and mesotibia with a deep oblique groove, which are well according with the generic characters of *Anoplophora* and distinctly different from allied genera in Monochamini.

ACKNOWLEDGMENTS

We are grateful to Dr. Steven W. Lingafelter (the National Museum of Natural History, Washington) for revising the manuscript, giving us useful suggestion and helping with needed reference materials. We are also grateful to Dr. Shu-lian Hao (Tianjin Museum of Natural History, China) for offering specimens of *Paragnia fulvomaculata* for this study. This work was financially supported by the National Natural Foundation of China (No. 31071955).

REFERENCES

- Duranton, G. 2004. Une nouvelle espèce dans le genre *Anoplophora* Hope, 1839 – *Anoplophora sebastieni* n. sp. (Cerambycidae, Lamiinae, Lamiini). *Besoiro*, 10: 2–4.
- Gahan, C. J. 1893. Descriptions of some new Longicorn Coleoptera from the Indian Region. *The Annals and Magazine of Natural History, London* (6)11: 377–390
- Lingafelter, S. W., Hoebeke, E. R. 2002. *Revision of Anoplophora (Coleoptera, Cerambycidae)*. The Entomological Society of Washington, Washington, D.C. 236 p, 34 pls, 67 figs, 14 maps.
- Ohbayashi, N., Ogawa, J. & Su, Z.-H. 2009. Phylogenetic analysis of the Lamiine genus *Anoplophora* and its relatives (Coleoptera, Cerambycidae) based on the mitochondrial COI gene. *Special Bulletin Japanese Society of Coleopterology, Tokyo*, 7: 309–324.
- Ohbayashi, N., Niisato, T. & Chou W.-I. 2009. Note on *Anoplophora wusheana* Chang from Taiwan (Coleoptera, Cerambycidae, Lamiinae). *Special Bulletin Japanese Society of Coleopterology, Tokyo*, 7: 325–328.

© **Far Eastern entomologist (Far East. entomol.)** Journal published since October 1994.

Editor-in-Chief: S.Yu. Storozhenko

Editorial Board: A.S. Lelej, N.V. Kurzenko, M.G. Ponomarenko, E.A. Beljaev, V.A. Mutin,
E.A. Makarchenko, T.M. Tiunova, P.G. Nemkov, M.Yu. Proshchalykin, S.A. Shabalin

Address: Institute of Biology and Soil Science, Far East Branch of Russian Academy of
Sciences, 690022, Vladivostok-22, Russia.

E-mail: entomol@ibss.dvo.ru

web-site: <http://www.biosoil.ru/fee>