

<i>Travaux du Muséum National d'Histoire Naturelle</i> «Grigore Antipa»	Vol. XLVIII	pp. 103–117	© 30 Dec. 2005
--	-------------	-------------	-------------------

**CATALOGUE OF THE PALAEARCTIC SPECIES OF PRIONINAE
AND LEPTURINAE (COLEOPTERA: CERAMBYCIDAE)
FROM THE PATRIMONY OF “GRIGORE ANTIPA”
NATIONAL MUSEUM OF NATURAL HISTORY (BUCHAREST)
(Part I)**

To Dr. Nicolae Săvulescu's memory

RODICA SERAFIM

Abstract. The catalogue includes data on 25 Palaearctic species of Cerambycidae coleopterans of the subfamilies Prioninae (tribes Prionini and Aegosomatini) and Lepturinae (tribes Oxymirini, Xylosteini, Rhamnusiini and Rhagiini) preserved in the collections of „Grigore Antipa” National Museum of Natural History.

Résumé. Le catalogue content des données sur 25 espèces paléarctiques de coléoptères Cerambycidae des sous-familles Prioninae (les tribues Prionini et Aegosomatini) et Lepturinae (les tribues Oxymirini, Xylosteini, Rhamnusiini et Rhagiini) conservées dans les collections du Muséum National d'Histoire Naturelle «Grigore Antipa».

Key words: Coleoptera, Cerambycidae, catalogue, collections, „Grigore Antipa” Museum.

In the entomological collections of „Grigore Antipa” National Museum of Natural History from Bucharest there are preserved 25 Palaearctic species of Cerambycidae coleopterans of the subfamilies Prioninae (tribes Prionini and Aegosomatini) and Lepturinae (tribes Oxymirini, Xylosteini, Rhamnusiini and Rhagiini).

The collection includes:

- Materials from the old coleopteran collection from the Palaearctic region (which gathers specimens aquired between 1883 – 1950 from Canisius, Kenderessy, Fleck, Deubel, Montandon, Várady collections) (8%)
- Material from Dr. Nicolae Săvulescu's collection, aquired between 1961–1982 (29%)
- Materials, from the same collection, included in the „Grigore Antipa” Museum patrimony in 1992, after Dr. Nicolae Săvulescu's death (cca 12%)
- The specimens received by material exchanges with the specialists and collectors from abroad (1%)
- Materials collected by the specialists of the „Grigore Antipa” Museum and their collaboratories during the field trips, between 1945–2004 (50%).

A large part of the information given by the specimens from collections were materialized by scientific papers.

The first data on the materials from the personal collections, which are now included in the Museum patrimony, were published in Montandon's (1884, 1906) and Fleck's papers (1905).

English translation by Mihaela Barcan Achim.

Panin and Săvulescu (1961) used the little material collected till 1960 to publish the Cerambycidae volume in the “*Romanian Fauna*” series.

The collections of Cerambycidae obviously increased after this date. The first step of the collection increasing was the acquiring of a part of Dr. Nicolae Săvulescu's collection, a part where most of the material was described in the fascicle of fauna. Gradually, in 1978, 1979 and 1982, other three parts were acquired, whose most of the data were not published since now.

The collections developed a lot after 1962 due to the material collected all around Romania during different field trips made by the scientists of the Department of Entomology and their laboratories. Among the researched areas we can mention the Danube Delta, Dobrogea, Vrancea County, the Romanian Plain, Satu Mare County, Maramureş County, Banat, Piatra Craiului Mountains, Făgăraş Mountains, etc. A part of the data given by the material of the collections were published by Negru & Roşca (1967), Serafim (1985, 1993, 1997 a, b, 1998, 1999, 2004), Serafim & Maican (2003, 2004).

After Dr. Nicolae Săvulescu's death, in 1992, his collection (unsold) was given to the Museum. For the time being, the material is studied (a part of its data is presented in this catalogue).

The catalog presents 25 Palearctic species of Cerambycidae, of the subfamily Prioninae (tribes Prionini and Aegosomatini) and of the subfamily Lepturinae (tribes Oxymirini, Xylosteini, Rhamnusiini and Rhagiini), represented by 1,941 specimens. Most of the material originates in Romania. Also, in the collection there is a material from France (*Megopis scabricorne*, *Rhagium bifasciatum*, *Rh. sycophanta*, *Rh. inquisitor*, *Pidonia lurida*), Italy (*Rhamnusium bicolor*), Czechia and Poland (*Akimerus schaefferi*, *Brachyta interrogationis*), Russia (*Carilia virginea*), Hungary (*Dinoptera collaris*). The species belonging to the Romanian fauna, from the tribes mentioned in the paper, are present in the Museum collections. An exception is the species *Acmaeops septentrionis*, whose presence in the Romanian fauna has to be confirmed. *Microarthron komarowi* and *Rhagium fasciculatus* are represented only by a foreign material.

The nomenclature and the systematical displaying are according to Danilevsky's paper (2004) – „Systematic list of longicorn beetles (Cerambycoidea) of Europe”.

Abbreviations

spec (s) – specimen (s); Mt. (s) – mountain (s)

Collectors' name:

A.I. – Andreescu Ioana; A.G. – Andrei Gabriela; B.C. – Ban Cristina; B.M. – Băcescu Mihai; B.P. – Berger P.; B.V. – Brădescu Vladimir; C. – Canisius; C.F. – Cârdei Filimon; C.S. – Chelmuş S.; C.G. – Chişamera Gabriel; C.F. – Constantin Fânica; D.Fr. – Deubel Fridrich; D.L. – Dioszeghy Laszlo; D.I. – Drăghia Ion; D.D. – Dumitrescu Dan; D.A. – Dumitru Angelica; F.Ed. – Fleck Eduard; G.V. – Gheorghiu Victor; H.L. – Heyrovsky Leo; H.C. – Hoinic Cristina; I.A. – Igna A.; I.Z. – Iszák Zoltan; K.V. – Kurnakov V.; L.G. – Ledoux George; L.D. – Lupu Dochiţa; M.S. – Maican Sanda; M.D. – Manoleli Dan; M.A.L. – Montandon Arnold Lucien; M.I. – Matache Ioana; M.M. – Matache Mihaela; M.P.B. – Matei Petre Bogdan; M.D. – Murariu Dumitru; N.I. – Nemeş Ioan; N.G. – Neamu Gheorghe; N.S. – Negru Ştefan; P.M. – Paspaleva Maria; P.D. – Pârvescu D.; P.C. – Pârveu Corneliu; P.A. – Petrescu Angela; P.E. – Pistică Elena; Po.C. – Podány C.; P.G.A. – Popescu-Gorj Aurelian; R.P. – Rapuzzi Pierpaolo; R.N. – Răduleş Năstase; R.G. – Romanca George; R.A. – Roşca Atena; R.E. – Rusu Elena; R.D. – Ruşti Dorel; S.F. – Salay Franz; S.N. – Săvulescu Nicolae; S.P.X. – Scobiola Palade Xenia; S.R. – Serafim Rodica; S.I. – Sienkiewicz Igor; S.A. – Stănescu Aurora; S.M. – Stănescu Mihaela; S.Mi. – Stănescu Mihai; S.Me. – Stan Melania; S.V. – Stan Vasiliică; S.L. – Szekely Levente; S.I. – Şandor I.; P.S.M. – Procheş Şerban Mihai T.A. – Takacs Adalbert; N.T. – Nalbant Teodor; T.E. – Teleki E.; V.E. – Văradi Emil; V.B. – Vasilescu B.; V.M. – Vasiliu M.; V.A. – Văraru Adriana; W.M. – Weinberg Medeea

Family Cerambycidae

Subfamily Prioninae

Tribe Prionini

Prionus Geoffroy, 1758*Prionus coriarius* (Linnaeus, 1758)

3 specs without data, K.D.; 1 spec. Comana, without other data, M.A.L.; 1 spec. Sinaia, without other data, M.A.L.; 1 spec. Novaci, without other data, C.; 1 spec., without other data, 1900, S.F.; 1 spec. Azuga, without other data, F.Ed.; 4 spec. Băile Felix, 1911, V.E.; 2 specs Comana, without other data, M.A.L.; 1 spec. Retezat Mts, 11.VI.1946; 1 spec. Lotrioara Valley, 5.08.1949, S.N.; 2 spec. Băile Herculane, 1950, V.E.; 1 spec. Băile Pucioasa, Sântimbru, 1952, V.E.; 1 spec. Căineni, 28.VII.1951; 2 specs Comana, 28.07.1954, S.N.; 3 specs Făgăraş Mts, Cumpăna peak, 2.08.1952, S.N. 1.09.1956; 5 specs Băile Herculane, 7-9.06.1953, S.N., 23.07.1954, S.N.; 1 spec. Sinaia, 11.10.1953; 1 spec. Retezat Mts, 27.07.1956, S.N.; 1 spec. Valu lui Traian, 19.07.1957, S.P.X.; 3 specs Piteşti, 2.VIII.1957, S.N.; 1 spec. Comana forest, 2.08.1958, S.N.; 1 spec. Suceava, 12.05.1959, P.G.A.; 2 specs Făgăraş Mts, Capra peak, 17.08.1959, S.N.; 4 specs Oraviţa, 4.08.1960, S.N.; 1 spec. Valea Neagră, 28.06.1961, L.D.; 1 spec. South of Dobrogea, 12.07.1961, S.N.; 1 spec. Pasărea forest, 7.07.1963, S.N.; 1 spec. Budeşti, 24.07.1963, R.A.; 2 specs Sinaia, 14.07.1965, S.N.; 1 spec. Polovragi, 14.07.1966, N.S.; 2 specs Băile Herculane, 19.07.1966, S.N.; 2 specs Călimăneşti, 19.07.1970, S.N.; 6 specs Râmnicu Vâlcea, 26.07.1970, S.N., 10.07.1975 S.N.; 1 spec. Băneasa forest, Bucharest, 26.06.1976, R.G.; 2 specs Oraviţa, 4-5.08.1977, S.N.; Băile Herculane, 1 spec. 18.05.1977, S.N., 1 spec. 2.08.1977, S.N., 1 spec. 29.07.1978, S.N., 1 spec. 15.06.1986, S.N.; 1 spec. Canaraua Feti, 13.07.1977, P.G.A.; 1 spec. Marila, 4.08.1977, S.N.; 1 spec. Băneasa, 15.07.1978, S.N.; 1 spec. Slătioara, Râşca, 3.09.1978, B.M., 2 specs Costeşti, 15.07.1979, V.B.; 1 spec. Ostrovul Mare, 10.07.1979, P.G.A.; 1 spec. Gura Văii, 28.07.1979, S.N.; 1 spec. 05.1983, B.M.; 1 spec. Buda Forest, 13.08.1980, I.Z.; 2 spec. Gura Motrului, 3.08.1981, S.R., 21.06.1983, D.I.; 2 specs Piatra Craiului Mts, Plaiu Foi, 4.08.1983, P.C.; 1 spec. Bucegi Mts, Dâmbu Morii, 25.07.1984; 1 spec. Băile Tuşnad, 17.08.1984, M.M.; 1 spec. Făgăraş Mts, Poiana Neamţului, 17.07.1985, M.I.; 1 spec. Halmeu Vii, 31.07.1985, P.C.; 1 spec. Băile Herculane, 15.06.1986, S.N.; 1 spec. Piatra Craiului Mts, Vlăduşca, 23.08.1990, S.R.; 1 spec. Oltenia, 18.08.1991, S.N.; 1 spec. Snagov, 12.07.1992, S.I.; 2 specs Lueta, Băile Chirui, 2.08.1993, H.C.; 1 spec. Negureni forest, 22.07.1994, A.G.; 1 spec. Săcele, Izvorul Albastru al Izei, 9.07.1995, H.C.; 1 spec. Săpânţa, Colibi forest range, 19.05.1996, S.Mi.; Lereşti, Valea Vinului, 1 spec. 17.08.1995, S.Mi., 1 spec. 19.07.2003, S.M.; 2 specs Ocna Şugatag, Pleşca chalet, 15-20.07.1998, R.N.; 1 spec. Jiului Valley, 7.07.2004, B.C.; 1 spec. Vineţi, Spineni, 8.07.2004, S.V.; 1 spec. Coşnea forest range, Poienile de sub Munte, 07.2004, P.C.

Microarthron Pic, 1900*Microarthron komarowi* Dohrn, 1885

1 spec. Kazakhstan, Baigakum, without other data.

Tribe Aegosomatini

Megopis Audinet-Serville, 1832*Megopis (Aegosoma) scabricornis* (Scopoli, 1763)

5 specs Comana, without other data, M.A.L.; 1 spec. Măcin, without other data, M.A.L.; 1 spec. without data, F.Ed.; 1 spec. Băile Felix, Oradea, 1911, V.E.; 1 spec.

Băile Pucioasa, Sântimbru, 1952, V.E.; 2 specs Constanța, 11.07.1954, S.N., 1 spec. 2.07.1955; Băile Herculane, 2 specs 4.08.1953, S.N., 5 specs 12-14.07.1954, S.N., 1 spec. 18.06.1959, S.N., 1 spec. 12.07.1962, S.N., 1 spec. 5.08.1971, S.N., 1 spec. 20.05.1976, S.N., 2 specs 4-5.07.1978, S.N.; 4 specs Galați, 13.08.1955, S.N.; Pitești, 3 specs 2.08.1957, S.N., 9 specs 29.07.-2.08.1959, S.N.; 1 spec. Sinaia, 10.07.1958, R.A.; Bucharest, 4 specs 14-15.07.1958, S.N., 1 spec. 1.08.1958, R.A., 2 specs (park of the Museum), 10.07.1968, 1 spec. 1.07.1990, C.F., 1 spec. 6.07.1994, R.E.; 2 specs Periprava, the Danube Delta, 16-18.07.1964, N.S.; C.A. Rosetti, the Danube Delta, 1 spec. 20.07.1964, N.S., 1 spec. 19.07.1980, P.G.A.; 1 spec. 20.05.1976, S.N., 2 specs 4-5.07.1978, S.N.; Băneasa forest, Bucharest, 6 specs 9.07. - 14.08.1959, S.N., 2 specs 15.07.1975, S.N.; 10 specs Pasărea forest, 10-12.07.1959, S.N.; 9 specs Pitești, 29.07.-2.08.1959, S.N.; 1 spec. South of Dobrogea, 12.07.1961, S.N.; Drobeta-Turnu-Severin, 1 spec. 15.07.1961, S.N., 4 specs 19.07.1962, S.N., 1 spec. 2.08.1964, S.P.X.; 4 specs France, Corsica, Bocognano, 25.08.1962, L.G.; Crișan, the Danube Delta, 2 specs 17.07.1962, P.G.A., 1 spec. 21.07.1970, N.S.; 1 spec. Cluj-Napoca, 4.07.1963; Sulina, 1 spec. 8.07.1968, N.S., 1 spec. 25.07.1984, P.M.; 1 spec. Ieșelnița, 12.08.1969, S.P.X.; 1 spec. Ogradena, 12.08.1969, S.P.X.; 1 spec. the bank of Nera, 24.06.1970, B.M.; 1 spec. Novaci, Gilort Valley, 26.08.1970, D.D.; 1 spec. Breznița, 7.07.1971, S.N.; 3 specs Letea forest, the Danube Delta, 7.07.1971 S.N.; Sfântu Gheorghe, the Danube Delta, 2 specs 12.08.1971, P.G.A., 3 specs 2.07.1983, S.N.; 1 spec. Roman, 3.06.1972, R.A.; Râmnicu Vâlcea, 1 spec. 26.07.1970, S.N., 2 specs Focșani, 17-19.08.1972, S.N.; 1 spec. 23.07.1973, P.G.A.; 2 specs Ghelmeșioara, 5.07.1977, S.N.; 1 spec. Gura Văii, 29.07.1979, S.N.; 1 spec. Slatina, Strehareț forest, 25.07.1980, M.I.; 4 specs Buda forest, 5-10.08.1980, I.Z.; 1 spec. Brașov, Tâmpa peak, 20.06.1981; 4 specs Ciupercenii Noi, 6.08.1982, P.C.; 1 spec. Zimnicea, 10.08.1982, M.D.; 1 spec. Spiru Haret, 08.1982, M.P.B.; 4 specs Maliuc, Mila 26, 7.08.1991, S.R., M.I.; 1 spec. Negureni forest, 22.07.1993, A.G.; 2 specs Bucharest, Cișmigiu Park, 6.08.2004, P.E.

Subfamily Lepturinae

Tribe Oxymirini

Oxymirus Mulsant, 1863

Oxymirus cursor (Linnaeus, 1758)

4 specs, without collecting data, K.D.; 5 specs, without collecting data, M.A.L.; 3 specs Azuga, without other data, F.Ed.; 3 specs Sinaia, without other data, C.; 2 specs Carpați Mts, Broșteni, without other data, M.A.L.; 1 spec. Retezat Mts, 26.VI.1951; 3 specs Rodna Mts, Pietrosu peak, 19.07.1953, S.N.; Băile Herculane, 1 spec. 29.05.1956, S.N., 1 spec. 25.06.1958, S.N., 1 spec. 10.07.1984, G.V.; 2 specs Cindrel Mts, Păltiniș, 2.07.1966, S.N.; Pădurea Craiului Mts, Stâna de Vale, 1 spec. 8.06.1956, C.S., 1 spec. 4.07.1964, A.I.; 1 spec. Craiova, 3.05.1960; 1 spec. Parâng Mts, Rânca, 24.06.1963, P.D.; 3 specs Bucegi Mts, Sinaia, 26-27.06.1971, S.N.; 1 spec. Bucegi Mts, Piatra Arsă, 2.06.1973, D.D.; 1 spec. Slătioara, 05.1983, B.M.; 1 spec. Turnu Roșu, 13.05.1986, D.I.; 1 spec. Sulina, 14.05.1986, P.C.; 1 spec. Gutâi Mts, Sălătruc forest range, 14.05.1986 S.R.; 3 specs Gurghiului Mts, 10.07.1994, M.P.B.; 1 spec. Săcel, Izvorul Albastru al Izei, 9.07.1995 R.D.; 1 spec. Rodna Mts, Golgota peak, 12.07.1995, P.C.; 1 spec. Săpânța, Colibi forest range, 12.07.1996, P.C.; 1 spec. Piatra Craiului Mts, Spiridon Șipoteanu chalet, 26.06.2002, P.C.; 1 spec. Maramureș Mts, Vaser Valley, Făina, 19.06.2003, S.R.

Tribe Xylosteini

Xylosteus spinolae (Frivaldszky, 1838)

3 specs Braşov, without other data, D.Fr.; 1 spec. Bucegi Mts, Sinaia, 18.06.1945, P.G.A.; 2 specs Bicaz, 25-27.06.1950, S.N.; Retezat Mts, Baleia chalet, 1 spec. 12.08.1955, S.N., 1 spec. 18.07.1956, S.N.; Bucegi Mts, Jepi, 1 spec. 25.07.1962, P.G.A., 1 spec. 24.05.1972, P.G.A. (Fig. 1 A).

Tribe Rhamnusiini

Rhamnusium bicolor (Schrank, 1781)

1 spec. without data, C.; 1 spec. without data, F.Ed.; Budeşti, 1 spec. 20.06.1954, S.N., 1 spec. 29.05.1959, R.A., 1 spec. 25.05.1979, W.M.; 1 spec. Comana, 15.05.1954, S.N.; 4 specs Tecuci, 5.06.1954, S.N.; 3 specs Italy, Faenza (RA), Emilia, 31.05.1980, R.P. (Fig. 1 B).

Tribe Rhagiini

Rhagium Fabricius, 1775*Rhagium (Hagrimum) bifasciatum* Fabricius, 1775

1 spec. without data, K.D.; 1 spec. Negreşti Oaş, 2.07.1964, S.N.; 1 spec. Graz, without other data, S.N.; 1 spec. France, Département Pyrenées Orientales, 2.06.1985. (Fig. 1 C).

Rhagium (Megarhagium) fasciculatum Faldermann, 1837

1 spec. Central Asia, the Caucasus, 13.05.1955 K.V.

Rhagium (Megarhagium) mordax (Degeer, 1775)

5 specs without data, K.D.; 2 specs Cernavodă, without other data, C., M.A.L.; 1 spec. Telega, 20.07.1951; 1 spec. Ciucaş Mts, Valea Berzei, 5.06.1953; Băile Herculane, 1 spec. 12.06.1956, S.N., 1 spec. Făgăraş Mts, Capra peak, 2.08.1957, S.N.; 1 spec. 4.07.1964, S.N., 1 spec. 2.07.1967, S.N., 1 spec. 30.05.1977, S.N.; 1 spec. Retezat Mts, Gura Apei, 28.07.1956, S.N.; Sinaia, 1 spec. 4.06.1965, S.N., 1 spec. 27.06.1971, S.N.; Moldova Nouă, 1 spec. 27.05.1973, S.N., 2 specs 25.05.1985, B.V.; 2 specs Făgăraş Mts, Capra peak, 27.07.1974, S.N.; 1 spec. Făgăraş Mts, Piscu Negru, 27.07.1974, S.N.; 1 spec. Ciucaş Mts, 10.07.1978, A.G.; 1 spec. left bank of the river Rica, 3 km upstream Poienile de sub Munte, 14.06.2003, S.R.

Rhagium (Megarhagium) sycophanta (Schrank, 1781)

1 spec. without data, F.Ed.; Comana, 1 spec. without other data, M.A.L., 1 spec. 9.06.1963, S.N.; 7 specs Cluj-Napoca, Făget, 1934; 1 spec. Ilfov County, 1946; 1 spec. Iaşi (Breazu), 18.05.1950; 2 specs Răşinari, 29.05.1951, S.N.; 2 specs Gutâi Mts, Igniş Valley, 19.06.1952, S.N.; 2 specs Periş, 4.05.1957, R.A.; Mezeş Mts, 1 spec. 5.05.1958, T.A., 1 spec. 20.06.1969, T.A.; 1 spec. Burdujeni, 12.05.1959, P.G.A.; 2 specs Giurgîţa, 6-11.07.1960, P.D.; Băile Herculane, 4 spec. 1950, V.E.; 1 spec. 4.07.1964, S.N.; 1 spec. 5.08.1971, S.N.; 1 spec. Salonta, 16.05.1967, S.N.; 2 specs Piteşti, 5.05.1971, S.N.; 1 spec. France, Aiguines, Forêt de Margés, 5.06.1974, B.P.; 1 spec. Sibiu, 24.05.1976, S.N.; 2 specs Strehaia, 12.05.1982, A.G.; 2 specs Corneşti, 20.05.1984, S.L.; 2 specs Turulung Vii, 13.06.1985, S.R.; Călugăreni, 1 spec. 4.05.1986, P.C., 2 specs Rediu forest, Botoşani, 3.05.1988; 1 spec. 29.04.1995, P.C.

Rhagium (Rhagium) inquisitor (Linnaeus, 1758)

3 specs without data, K.D.; 1 spec. without data, C.; 2 specs Azuga, without other data, F.Ed.; 1 spec. Kronstadt (Braşov), without other data, D.Fr.; 1 spec. Rosenau (Râşnov), without other data D.Fr.; 1 spec. Ceahlău Mt., without other data, M.A.L.; Sinaia, 3 specs without other data, M.A.L., 3 specs 13.06.1957, R.A., 2 specs 17.10.1959, S.I., 1 spec. 29.07.1963, R.A., 3 specs 4.06.1965, S.N., 4 specs

23.09.1965, R.A., 3 specs 27.06.1971, S.N.; 1 spec. Rodna Mts, Pietrosu Peak, 5.08.1954, S.N.; 1 spec. Răşinari, 8.08.1955, S.N.; Băile Herculane, 1 spec. 1950, V.E.; 2 specs 29.05.1956, S.N., 1 spec. 2.10.1967, D.D.; 1 spec. 30.06.1985, S.N.; 1 spec. Bărnova, 9.06.1958, S.N.; 1 spec. Pădurea Craiului Mts, Stâna de Vale, 8.06.1956, N.G.; 1 spec. Rucăr, 8.06.1957, N.T.; 3 specs Novaci, 24.06.1963, P.D.; 1 spec. Comana, 25.04.1983, S.N.; 1 spec. France, Departement Pyrenées Orientales, 6.12.1984; 1 spec. Sîriului Mts, Mălăia peak, 25.09.1986, M.D.; 1 spec. Căpâlnaş, 26.05.1995, T.E.; 3 specs Săpânţa, Colibi forest range, 17.05.1996, S.Mi.; 4 specs Repedea, Smereceni clearing, 20-27.06.1997, S.R.; 1 spec. Repedea, Repedea forest range, 22.06.1997, S.R.; 1 spec. Maramureş Mts, Cârlişău Valley, 17 km upstream Repedea, 27.06.1997, S.A.; 2 specs Maramureş Mts, Vaser Valley, Făina, 19.06.2003, S.R., S.M.; 1 spec. Piatra Craiului Mts, Măgura, 21.05.2004, P.C.; 3 specs Piatra Craiului Mts, Zărneşti Gorges, 22.05.2004, S.R.

Stenocorus Fabricius, 1775

(*Toxotus* Dejean, 1821)

Stenocorus meridianus (Linnaeus, 1758)

2 specs without data, K.D.; 1 spec. Azuga, without other data, F.Ed.; Comana, 3 specs without other data, M.A.L., 2 spec. Băile Felix, 1911, V.E.; 2 spec. Băile Herculane, 1950, V.E.; 1 spec. 31.05.1956, 1 spec. 12.06.1956, S.N., 6 specs 19-23.07.1956, S.N., 1 spec. 19.05.1958, S.I.; 13 specs 2-15.07.1960, S.N., 1 spec. 4.07.1964, S.N., 1 spec. 12.06.1965, S.N.; 1 spec. Bucharest, Băneasa forest, 10.05.1952, S.N.; 2 specs Târgu Mureş, 14.06.1956, S.N.; 2 specs Căldăruşani, 31.05.1957, S.P.X.; 1 spec. Bucharest, Mogoşoaia forest, 7.05.1961, S.P.X.; 1 spec. South of Dobrogea, 17.05.1962, S.N.; 1 spec. Craiova, 5.06.1964, S.N., 1 spec. Greci, 7.07.1964, S.I.; 1 spec. Măneciu Ungureni, 22.10.1967, S.P.X.; Pasărea forest, 1 spec. 15.06.1969, P.G.A., 1 spec. 10.06.1980, P.G.A.; 5 specs Moldova Nouă, 21.06.1973, S.N.; 18 specs Stănceşti, 18.05.1978, S.N.; 3 specs Ciucurova, 19.06.1981, S.N., 3 specs Cloşani, 21.05.1982, S.N.; 1 spec. Turulung Vii, 13.06.1985, M.I.; 4 specs Spătaru forest, 7 km South-West Buzău, 24.06.1987, M.I.; 1 spec. Agiea, 12.06.1993, M.I.

Stenocorus (Anisorus) quercus (Götz, 1783)

1 spec. without data, F.Ed.; 1 spec. Bucharest, Băneasa forest, 10.05.1952, S.N., 1 spec. 5.05.1982 S.N., 4 spec. 18-19.05.1991 S.N.; 1 spec. Răşinari, 18.05.1953, S.N.; 1 spec. Comana, 23.05.1954, S.N.; 1 spec. Cernica, 28.05.1955; Pasărea forest, 1 spec. 24.05.1956, S.N.; 1 spec. 8.05.1963, R.A.; 2 specs Băile Herculane, 29.05.1956, S.N.; 1 spec. Bucharest, Mogoşoaia forest, 26.05.1959, R.A.; 1 spec. Greci, 21.05.1960, R.A.; 1 spec. Piteşti, 8.05.1961, S.N.; 1 spec. South of Dobrogea, 23.05.1965, S.N.; 1 spec. Jorăşti, 8.05.1968, N.S.; 12 specs Cocoş Monastery, 15.07.1985, S.N.

Akimerus Audinet - Serville, 1835

Akimerus schaefferi (Laicharting, 1784)

1 spec. without data, K.D.; 1 spec. Czechia, Doupov, without other data, Po.C.; 1 spec. Czechoslovakia, without other data, H.L.; 1 spec. Poland, Breslau (Wroclaw), 1952, S.N.; 8 specs Ghelmeşoaia, 2.06.1972, S.N.; 10 specs Gura Văii, 19.05.-4.07.1978, S.N. (Fig. 1 D).

Pachyta Dejean, 1821

Pachyta quadrimaculata (Linnaeus, 1758)

3 specs without data, K.D.; 7 specs Vâlcea County, without other data, C.; 7 specs Carpaţi Mts, Broşteni, without other data, M.A.L.; 1 spec. Rarău peak, 20.06.1905;

2 ex. Băile Felix, Oradea, 1911, V.E.; Retezat Mts, Gura Apei, 1 spec. 6.08.1927, D.L., 2 specs 28.08.1956, S.N.; Retezat Mts, 1 spec. 2.08.1927, D.L., 1 spec. 29.08.1855, S.N., 2 specs 27.06.1956, S.N., 1 spec. 8.08.1976, P.C.; 2 specs Slănic Moldova, 12.06.1949; Băile Herculane, 1 spec. 1950, V.E., 3 specs. 27.06.1975, S.N.; 1 spec. Rodna Mts, Pietrosu peak, 1952 S.N.; 5 specs Retezat Mts, Gura Zlata, 26.08.1956, S.N.; Făgăraş Mts, Capra peak, 4 specs 27-28.07.1957, S.N., 10 specs 17-20.08.1959, S.N., 2 specs 21.07.1974, S.N.; 21 spec. Făgăraş Mts, Buda peak, 12-21.08.1959, S.N.; 2 specs Făgăraş Mts, Otic peak, 16.08.1959, S.N.; 2 specs Lacul Roşu, 1.08.1964, S.P.X.; 1 spec. Răşinari, 2.07.1966, S.N.; 1 spec. Polovragi, 14.08.1966, N.S.; 1 spec. Retezat Mts, Rotunda, 9.08.1976, P.C.; 3 specs Cheile Bicazului, 13.08.1983, S.L.; 3 specs Lueta, Băile Chirui, 2.08.1993, H.C.; 1 spec. Izvorul Izei, 9.07.1995, M.I.; 5 specs Repedea, forest range 26.06.1997, M.I.; 1 spec. Vişeu Valley, 2 km downstream Borşa, 20.08.1997, P.C.; Maramureş Mts, Vaser Valley, Făina, 1 spec. 21.07.2004, P.C., 4 specs 21-22.07.2004, S.R., 2 specs 22.07.2004, C.G.; 2 spec. Făgăraş Mts, Curmătura Valley, Vidraru, 8.08.2004 S.R.

Pachyta lamed (Linnaeus, 1758)

1 spec. without data, K.D.; 1 spec. Azuga, 20.07., F.Ed.; 1 spec. Retezat Mts, 15.07.1951, S.N.; 1 spec. Făgăraş Mts, 2.08.1954, S.N.; Retezat Mts, Gura Apei, 15-17.07.1955, S.N.; 1 spec. Lotru Valley, 9.06.1960, P.G.A.

Brachyta Fairmaire, 1864

Brachyta balcanicus Hampe, 1870

2 specs Retezat Mts, Gura Apei, 28.07.1956, S.N.; 1 spec. Agigea, 9.06.1958, C.F.; 1 spec. Murfatlar, 17.05.1962, S.N.; Şelimbăr, 2 specs 29.05.1963, S.N., 2 specs 21.05.1965, S.N.; Hagieni forest, 1 spec. 21.05.1985, S.N., 35 specs 29.04.-1.05.1991, S.N. (Fig. 2 A).

Brachyta interrogationis (Linnaeus, 1758)

1 spec. without data, K.D.; 6 specs Bohemia, Czechia, 1951, Po.C. (Fig.2 B).

Evodinellus Plavilstshikov, 1915

Evodinellus (Evodinellus) borealis (Gyllenhal, 1827)

1 spec. without data K.D.

Evodinellus (Brachytodes) clathratus (Fabricius, 1792)

8 specs without data, K.D.; 1 spec. Transylvania, without other data, K.D.; 1 spec. Cernavodă, without other data, C.; 2 specs Sighişoara, without other data, D.Fr.; 1 spec. Hăşmaşul Mare Mts, without other data, D.Fr.; 3 specs Sinaia, 25.05.1953; 2 specs Gutâi Mts, Igriş Valley, 29-30.05.1953, S.N.; 1 spec. Retezat Mts, Gura Zlata, 26.07.1956, S.N.; 6 specs Cindrel Mts, Păltiniş, 2.07.1962, S.N.; 1 spec. Eastern Jiu Valley, 1.07.1976; 1 spec. Obârşia Lotrului, 23.07.1977, P.G.A.; 1 spec. Plopiş, 27.06.1980, A.G.; 3 specs Piatra Craiului Mts, Şpirala shelter, 12.05.1990; 1 spec. Trăiseni, 25.06.1994, P.C.; 1 spec. Borşa, 5 km South of Rodna Mts, 11.07.1995, P.C.; 3 specs Elmo clearing, 2 km upstream Repedea, 24-27.06.1997, S.R., P.C.; 4 specs Smereceni clearing, 7 km upstream Repedea, 24.06.- 22.08.1997, S.R.; 5 km Cârlişău Valley, 17 km upstream Repedea, 27.06.1997, S.A.; 2 specs Piatra Craiului Mts, Crăpătura Valley, 8.06.2000, P.C.

Gnathacmaeops Linsley & Chemsak, 1972

Gnathacmaeops pratensis (Laicharting, 1784)

2 specs Azuga, without other data, F.Ed.

Dinoptera Mulsant, 1863*Dinoptera collaris* (Linnaeus, 1758)

6 specs without data, T.E.; 6 specs Cernavodă, without other data, C.; 3 specs Comana, M.A.L.; 1 spec. Măcin, without other data, M.A.L.; 1 spec. Bucharest, without other data, M.A.L.; 3 specs Roman, 1933; 1 spec. Cernica, 6.05.1955; Băile Herculane, 2 specs 21.05.1956, S.N., 1 spec. 9.07.1961, S.N., 2 specs 17.06.1962, S.N., 1 spec. 14.06.1967, S.N., 1 spec. 25.05.1971, S.N., 1 spec. 1.08.1975, S.N., 13 specs 21.06.1977, S.N., 6 specs 15.07.1977, S.N.; 1 spec. Târgu Mureş, 14.06.1956, S.N.; 1 spec. Mogoşoia, 26.05.1959, R.A.; 2 specs Panaghia forest, 15.05.1961; 3 specs Greci, 26.05.1961, S.P.X.; 5 specs Şelimbăr, 4.06.1962, S.N.; Hagieni forest, 1 spec. 5-19.06.1962, D.I., S.P.X., 5 specs 4.06.1964, N.S., D.I., 1 spec. 9.05.1965, S.N., 1 spec. 11.06.1992; 1 spec. Bran, 26.05.1963, S.P.X.; 1 spec. Comarova forest, Mangalia, 30.05.1963, S.P.X.; 1 spec. Dumbrăveni forest, 23.05.1965, S.N.; 2 specs Vişeu de Sus, 10.06.1966, S.N.; 1 spec. Niculiţel, 27.06.1967, V.M.; 6 specs Budapest, Hungary, 18.05.1969, S.P.X.; 1 spec. Sinaia, 20.07.1969, R.A.; 1 spec. Orşova, 18.06.1970, R.A.; Babadag, 12 specs 1.06.1971, S.N., 1 spec. 12.05.1982; Cocoş Monastery, Dobrogea, 9 specs 9.05.1973, P.G.A., 1 spec. 9.06.1979, C.A.; 4 specs France, Alpes Maritimes, Cipieres, le Plan, 8.06.1974, B.P.; 1 spec. France, Var (83), Le Muy, 12.06.1974, B.P.; 1 spec. Marila, 28.05.1975, S.N.; 1 spec. Râioasa forest, 8.05.1979, S.R.; 1 spec. Budeşti, 25.05.1979, W.M.; 1 spec. Pasărea forest, 23.05.1981, S.N.; 8 specs Comana forest, 25.05.1981, S.N.; 1 spec. Gălbinaşi, 11.05.1988, S.R.; 1 spec. Bulba Valley, 17.06.1992, P.A.; Negureni, 2 specs 16.05.1994, A.G., 14 specs 17-21.05.1994, H.C.; 18 specs Dumbrăveni forest, 17-21.05.1994, P.C., H.C., A.G.; 1 spec. Canaraua Fetei, 20.05.1994, A.G.; Mănăstirea Celic Dere, 5 specs 20.05.1997, S.R., 1 spec. 24.05.1997, P.C.; 1 spec. Valea Fagilor, 23.05.1997, S.R.; Moisei, „Izvorul lui Dragoş” forest range, 7 specs 13.07.1995, H.C., 1 spec. 13.09.1995, P.C.; 5 specs Comorova forest, 22.05.1997, P.C.; Elmo clearing, 2 km upstream Repedea, 3 specs 24.06.1997, S.R., 5 specs Repedea forest range, 21-26.06.1997, S.R.; 1 spec. Valley of the Frumuşeaua river, 10 km upstream Crasna Vişeuului, 25.06.1997, S.R.; 1 spec. Cărligătura Valley, 17 km upstream Repedea, 27.06.1997, P.C.; Piatra Craiului Mts, Bârsa Fierului, 5 specs 12.05.2001, P.C., 2 spec. 25.05.2004, M.S.; 5 specs Piatra Craiului Mts, Gura Bârsei, 10.06.2002, P.C.; 1 spec. Piatra Craiului Mts, Sătic, Valea Zăpodia, 28.06.2002, P.C.; 2 specs Țibleş Mts, 5.5 km upstream Baicu river, Dragomireşti, 21.06.2003, P.C.; 1 spec. Țibleş Mts, Pălcut’s streamlet, Dragomireşti, 22.06.2003, P.C.; 3 specs Țibleş Mts, Idişor streamlet, Sălişte, 22.06.2003, S.R., P.C., S.Me.; 1 spec. Petroşani, Giurgiu, 28.04.2002 S.Me.; 53 specs Maramureş Mts, Vaser Valley, Făina, 21.07.2004, S.R., P.C., C.G.; 1 spec. Valley of Vişeu river, 5 km upstream Bistra, 24.07.2004, P.C.

Carilia Mulsant, 1863*Carilia virginea* (Linnaeus, 1758)

1 spec. Azuga, without other data, F.Ed.; 6 specs Bran, without other data, C.; 3 specs Sinaia, without other data, M.A.L.; 2 specs without data, K.D.; 3 spec. Mireşu Mare (Nagynyires), 1940, V.E.; 1 spec. Pasărea forest, 7.04.1946, S.P.X.; 2 specs Retezat Mts, 11.06.-2.07.1946; 2 specs Slănic Moldova, 1.08.1949, S.P.X.; 1 spec. Bicz gorges, 18.07.1957 N.I.; 1 spec. Căldăruşani, 3.06.1959; Făgăraş Mts, Buda peak, 26 specs 12-21.08.1959, S.N., 29 specs 30.07.1974, S.N.; Făgăraş Mts, Otic peak, 21 spec. 15.08.1959, S.N., 34 specs 29.07.1974, S.N.; Făgăraş Mts, Capra peak, 3 specs 2.08.1957, S.N., 14 specs 17-20.08.1959, S.N., 42 specs 27-

29.07.1974, S.N.; 2 specs Baiului Mts, Piatra Mare, 24.08.1962, S.N.; 1 spec. Tâncăbești, 24.04.1966, D.I.; 1 spec. Rânca, 31.06.1964; 3 specs Borsec, 12-23.06.1966, S.P.X.; 1 spec. Bucegi Mts, Poiana Stâinii, 30.06.1969, R.A.; 14 specs Zboina, 26-27.06.1971, S.P.X., L.D.; 37 specs Făgăraș Mts, Piscu Negru, 27.07.1974, S.N.; Băile Herculane, 11 spec. 1-5.08.1975, S.N.; Letea forest, 1 spec. 27.04.1976; 1 spec. 3.08.1976; 2 specs Bucegi Mts, Ialomicioara Cave, 12.08.1976, D.A.; 2 specs Maramureș Mts, Vaser Valley, 20.08.1982, I.A.; 1 spec. Retezat Mts, Gura Zlata, 30.06.1985, P.C.; 36 specs Făgăraș Mts, Poiana Neamțului, 18-21.07.1985, S.R.; 1 spec. Piatra Craiului Mts, Șpiria Valley, 12.07.1990, S.R.; 5 specs Băile Chirui, Lueta, 2.08.1993, H.C.; 3 specs Făgăraș Mts, Bâlea waterfall, 24-25.07.1994, P.C.; 10 specs Săcel, Izvorul Albastru al Izei, 6-9.07.1995 P.C., H.C.; 2 specs Borșa, 5 km South of Rodna Mts, 12.07.1995, H.C.; 8 specs Moisei, „Izvorul lui Dragoș” forest range, 13.07.1995, P.C., S.A.; 31 spec. Săpânța, Colibi forest range, 5-14.07.1996, P.C., S.A., H.C., M.I.; 1 spec. Azuga Valley, 31.07.1996, S.Mi.; Smereceni clearing, 7 km upstream Repedea, 21 spec. 20-29.06.1997, S.R., M.I., S.A., 1 spec. 22.08.1997, P.C.; 5 specs valley of Frumuseaua river, 10 km upstream Crasna Vișeului, 23-25.06.1997, S.R., M.I., S.A.; 10 specs Repedea forest range, 21-29.06.1997, S.R., P.C., S.A.; 2 specs Elmo clearing, 2 km upstream Repedea, 24-29.06.1997, S.R.; 2 specs Cârlișura Valley, 17 km upstream Repedea, 27.06.1997, M.I.; 2 specs Vișeuț river, 12 km upstream Borșa, 20.08.1997, P.C.; 4 specs Bălăsâna Valley, 4 km upstream Baia Borșa, 21.08.1997, P.C.; 4 specs Ocna Șugatag, Pleșca chalet, 14-17.07.1998, P.C.; 2 specs Tătaru dam in the Mara river, 16-19.07.1998, P.C.; 1 spec. Izvoare resort, 1 km downstream Desești, 23.07.1998, V.A.; 10 specs Piatra Craiului Mts, Scorobia Valley, 5.07.2000, P.C., S.A.; 4 specs Piatra Craiului Mts, Râioasa Valley, 7.06.2000, P.C.; 1 spec. Piatra Craiului Mts, Dragoslăveni Valley, 8.07.2000, P.C.; 2 specs Piatra Craiului Mts, Bârsa Fierului, 12.07.2001, P.C.; 1 spec. Piatra Craiului Mts, Râioasa Valley, 13.07.2001, P.C.; 1 spec. Piatra Craiului Mts, Gura Bârsei, 1.06.2002, P.C.; 5 specs Piatra Craiului Mts, Valea lui Ivan, 27.06.2002, P.C.; 1 spec. Piatra Craiului Mts, Valea Lungă, 29.06.2002, P.C.; 1 spec. Piatra Craiului Mts, Onceoia, 30.06.2002, P.C.; 7 specs 500 m downstream the confluence of the Rica and Budescu rivers, Poienile de sub Munte, 14.06.2003, S.R.; 5 specs valley of the Cvașnița river, 6 km upstream Coșnea forest range, Poienile de sub Munte, 15.06.2003, P.C., S.Me.; 2 specs Coșnea forest range, Poienile de sub Munte, 18.06.2003, P.C.; 1 spec. Țibleș Mts, valley of the Baicu river, 5.5 km upstream Baicu forest range, Dragomirești, 21.06.2003, S.R.; 2 specs Țibleș Mts, Dragomirești, Baicu forest range, 22.06.2003, S.Me.; 1 spec. Țibleș Mts, Valea lui Cosiță, Dragomirești, 22.06.2003, S.R.; 1 spec. valley of the Socolău river, 2 km upstream confluence of the Socolău and Rica rivers, 19.07.2004, P.C.; 8 specs Maramureș Mts, the confluence of the Pop Ivan and Hututeanca, 18.06.2004, C.G., P.C.; 45 specs Maramureș Mts, Vaser Valley, Făina, 21.07.2004, S.R., P.C., C.G.; 2 spec. Făgăraș Mts, valley of the Otic river, 4.08.2004, S.R., S.Me.; 1 spec. Russia, Sverdlovsk, without other data.

Pseudogaurotina Plavilstshikiov, 1958

Pseudogaurotina excellens (Brancsik, 1874)

1 spec. Retezat Mts, Gura Apei, 15.06.1956, S.N.; 1 spec. Săpânța, Colibi forest range, 5.07.1996, M.I. (Fig. 2 C).

Pidonia Mulsant, 1863*Pidonia lurida* (Fabricius, 1792)

2 specs without data, M.A.L.; 6 specs Azuga, without other data, F.Ed.; 1 spec. Băneasa forest, without other data, C.; 1 spec. Predeal, without other data, F.Ed.; 3 specs Azuga, without other data, F.Ed.; 1 spec. Pasărea forest, 14.05.1952, S.N.; Bodi, 2 specs 9.06.1952, S.N., 1 spec. 16.06.1963, S.N.; Rodna Mts, Pietrosu peak, 17 specs 26.06.1953, S.N., 2 specs 18.06.1963, S.N.; 4 specs Retezat Mts, 25-27.07.1956, S.N.; Băile Herculane, 1 spec. 29.05.1956, S.N., 1 spec. 3.07.1960, S.N., 2 specs 18.05.1965, S.N., 1 spec. 9.07.1977, S.N.; Vatra Dornei, 1 spec. 5.07.1957, N.I., 1 spec. 18.07.1973, P.G.A.; 8 specs Făgăraş Mts, Buda peak, 12-21.08.1959, S.N.; 10 specs Făgăraş Mts, Otic peak, 15-16.08.1959, S.N.; Făgăraş Mts, Capra peak, 4 specs 17-20.08.1959, S.N. 25 specs, 27-28.07.1974, S.N.; 3 specs Sinaia, 7.07.1960, S.P.X.; 3 specs Gutâi Mts, Igriş Valley, 16.06.1963, S.N.; 1 spec. Bucegi Mts, Poiana Stâni, 2.07.1969, R.A.; 1 spec. Bacău, 8.06.1971; 1 spec. Sinaia, 27.06.1971, S.N.; 2 specs Sinaia, 29.07.1971, S.N.; 1 spec. Moldova Nouă, 24.05.1972, S.N.; 8 specs France, Aiguines, forêt de Margés (83), 5.06.1974, B.P.; 11 specs Făgăraş Mts, Piscu Negru, 27-28.07.1974, S.N.; 4 specs eastern Jiu Valley, 1 07.1976; 1 spec. Padiş, 2.07.1976, D.D.; 2 specs Bucegi Mts, Ialomicioara Cave, 21.08.1976, D.D.; 1 spec. Făgăraş Mts, Poiana Neamţului, 21.07.1985, S.R.; 4 specs Piatra Craiului Mts, Plaiu Foi, 11-12.07.1990, S.R.; 1 spec. Piatra Craiului Mts, Şpirala Valley, 12.07.1990, S.R.; 3 specs Trăiseni, 25.06.1994, P.C., A.G.; 1 spec. Făgăraş Mts, Bălea waterfall, 25.07.1994, P.C.; 1 spec. Gurghiului Mts, 10.07.1994, P.B.M.; 32 specs Izvorul Izei, 6-10.07.1995, P.C., M.I., S.A., H.C.; 2 specs Moisei, „Izvorul lui Dragoş” forest range, 13.07.1995, M.I., P.C.; 1 spec. Borşa, 5 km South of Rodna Mts, 11.07.1995, P.C.; 1 spec. Brustani clearing, 2.08.1996, P.C.; 1 spec. Brazi clearing, 7.07.1996 P.C.; 1 spec. Săpânţa, Colibi forest range, 11.07.1996, M.I.; 45 specs Elmo clearing, 2 km upstream Repedea, 24.06.1997, P.C., S.R.; 23 specs Repedea forest range, 16-21.06.1997, M.I.; 25 specs Smereceni clearing, 7 km upstream Repedea, 20.06.-2.07.1997, S.R.; 13 specs valley of the Frumuşeaua river, 10 km upstream Crasna Vişeuului, 23-26.06.1997, S.R.; 10 specs Cârliğătura Valley, 17 km upstream Repedea, 27.06.1997, P.C.; 2 specs Bălăsâna Valley, 4 km upstream Baia Borşa, 21.08.1997, P.C.; 1 spec. Tătaru dam in the Mara river, 19.07.1998, V.A.; 2 specs Deseşti, 28.07.1998, P.S.M.; 1 spec. Piatra Craiului Mts, Speriata Valley, 6.07.2000, P.C.; 1 spec. Piatra Craiului Mts, Bârsa Fierului, 12.06.2001, P.C.; 3 specs Piatra Craiului Mts, Râioasa Valley, 7.06.2000, P.C.; 1 spec. Piatra Craiului Mts, Bârsa Tămaşului, 9.06.2000, P.C.; 1 spec. Piatra Craiului Mts, Bârsa Groşetului, 4 km upstream Plaiu Foi, 9.06.2000, P.C.; Piatra Craiului Mts, Gura Bârsei, 3 specs 9.06.2000, P.C., 1 spec. 1.07.2002, P.C.; 1 spec. Piatra Craiului Mts, Dragoslăveni Valley, 8.07.2000, P.C.; 9 specs Piatra Craiului Mts, Bârsa Fierului, 12.05.2001, P.C.; 1 spec. Piatra Craiului Mts, Curmătura Valley, 13.06.2001, P.C.; 4 specs Piatra Craiului Mts, Valea lui Ivan, 27.06.2002, P.C.; 1 spec. Piatra Craiului Mts, Sătic, Valea Lungă, 29.06.2002, P.C.; 5 specs Piatra Craiului Mts, Berila, 30.06.2002, P.C.; 2 specs Poienile de sub Munte, Lutoasa Valley, 14.06.2003, P.C.; 14 specs Maramureş Mts, confluence of the Rica and Budescu rivers, Poienile de sub Munte, 14.06.2003, P.C.; 1 spec. Maramureş Mts, confluence of the rivers Rica and Coşnea, Poienile de sub Munte, 15.06.2003, S.R.; 12 specs valley of the Pop Ivan river, 12 km upstream Crasna Vişeuului, 17.06.2003, S.R., P.C.; 4 specs Țibleş Mts, Dragomireşti, Valea lui Cosiţă, 22.06.2003 S.R., S.Me.; 1 spec. Țibleş Mts, Idişor streamlet, Sălişte, 22.06.2003, S.R.; 3 specs Țibleş Mts, Sălişte, bank of the Şandra streamlet, 23.06.2003 P.C.

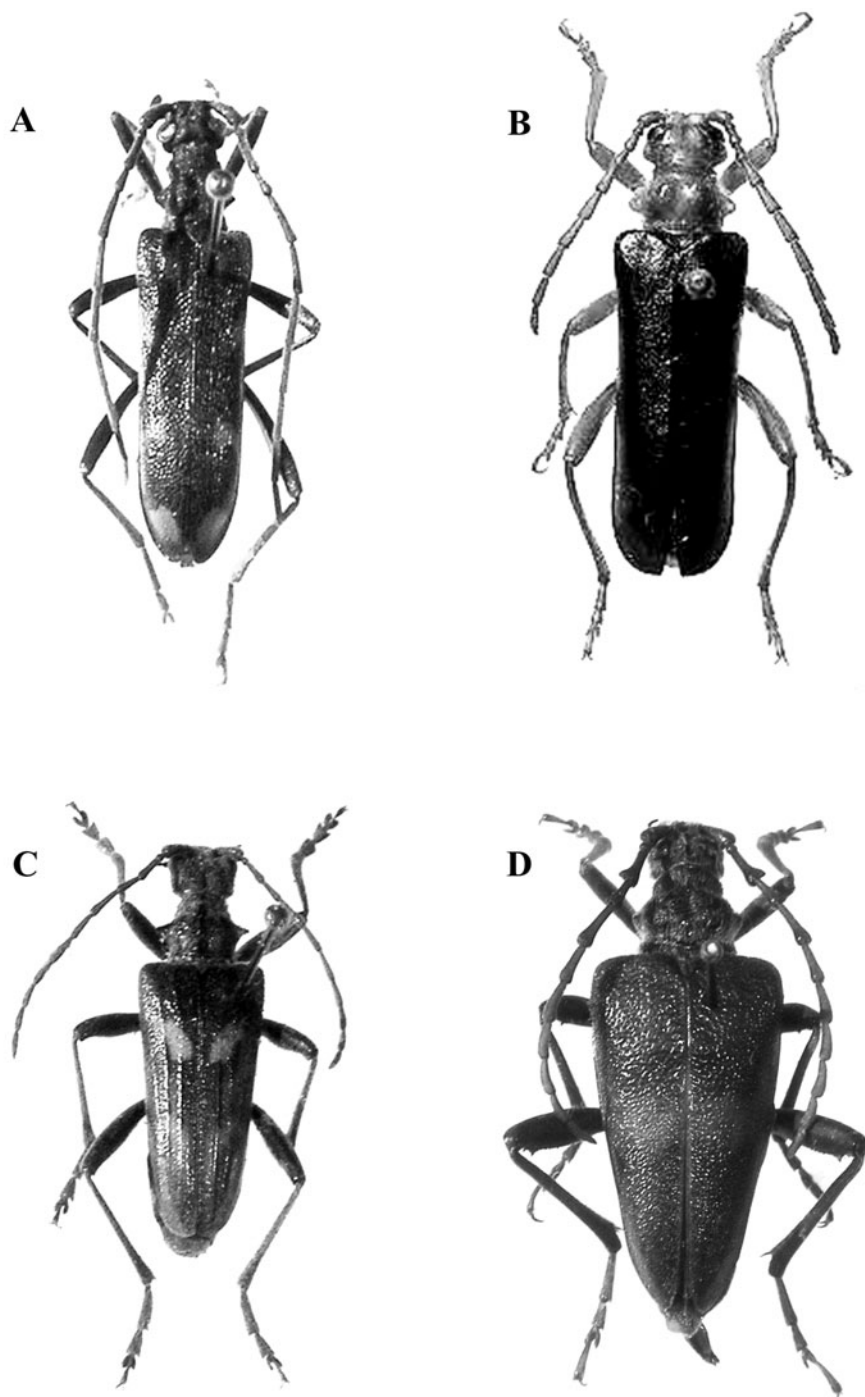


Fig. 1 – A, *Xylosteus spinolae*; B, *Rhamnusium bicolor*; C, *Rhagium bifasciatum*; D, *Akimerus schaefferi*.

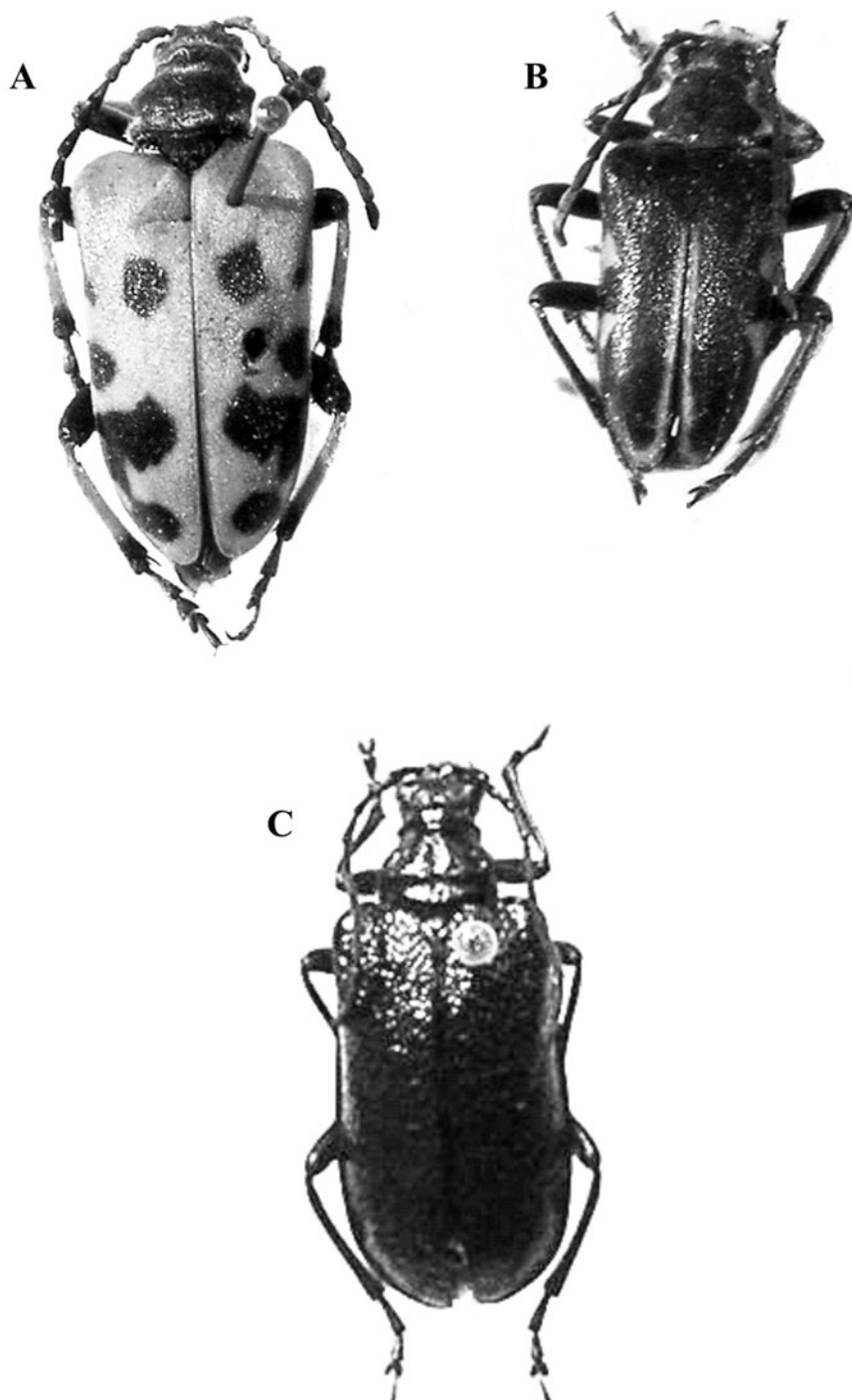


Fig. 2 – A, *Brachyta balcanicus*; B, *Brachyta interrogationis*; C, *Pseudogaurotina excellens*.

DISCUSSIONS

The specimens, originating in the collections acquired at the end of the 19th century and at the beginning of the 20th one, do not have all collecting data. But they are preserved for their historical value. We know that the specimens from Deszö Kenderessy's collection, amateur entomologist from Transylvania, were collected at the end of the 19th century, from Hațeg tableland. The materials from Eduard Fleck's collection (amateur entomologist from Azuga) were collected especially from the Bucegi Mountains, most of them from Azuga, collection being acquired in 1914. Most of the specimens of Fridrich Deubel's collection (amateur entomologist from Brașov), acquired in 1923, are from the outskirts of Brașov. Localities are mentioned on labels, but without other collecting data. The same problems raises for Arnold Lucien Montandon's collection, which consists of materials collected from the royal land property from Broșteni, Comana or Dobrogea, at the end of the 19th century and the beginning of the 20th one.

From the subfamily Prioninae, *Prionus coriarius* (Prionini) and *Megopis scabricornis* (Aegosomatini), common species, are well represented within collections.

The East-Palaeartic species, *Microarthron komarowi* (Prionini), was collected in Baigakum, Kazakhstan.

From Lepturinae, *Oxymirus cursor* (Oxymirini), *Rhagium mordax*, *Rh. sycophanta*, *Rh. inquisitor*, *Stenocorus meridianus* and *Anisorus quercus* (Rhagiini) are well represented within collections.

Relatively a few data on the species *Xylosteus spinolae* are published: Sinaia (Peleş Castle) and Negoiu (Montandon, 1906); Preajba, Buzăului Mts (Petri, 1912); Brașov, Tarcău, Gheorghieni, Cibinului Mts, Negoii (Făgăraș Mts), Prăpatea (Piatra Craiului Mts) (Panin & Săvulescu, 1961); Băile Herculane, Domogled (Kovács, Hegyessy & Medvegy, 1998-1999); Voineasa, near Obârșia Lotrului (Ruicănescu & Patko, 1995); Valea Cernei (Ruicănescu, 1997). To all these we add the data given by the specimens from the collections of the Museum: Bicz, Retezat Mts (Baleia chalet), Bucegi Mts, Jepi.

Rhamnusium bicolor (Rhagiini) was recorded at Comana and Dobrogea (Fleck, 1905), Zau de Câmpie, Cluj, Brașov, Sibiu, Făgăraș, Rodna Mts (Petri, 1912), Pitești, Bărnova, Tecuci, Budești, Comana (Panin & Săvulescu, 1961), Sucevița, Dorohoi (Andriescu, 1972), Cozla hill, Piatra Neamț (Serafim & Apetrei, 1996). The specimens preserved in the collections of the Museum offer new collecting data: Tecuci, Budești and Comana.

Rhagium bifasciatum was recorded in Cluj (Petri, 1925–1926), Craiova, Ineu, Sibiu, Tulgheș, Făgăraș Mts, Râșnov Mts (Panin & Săvulescu, 1961). After the fauna fascicle was published, the species was also found at Negrești Oaș, in 1964 (specimen preserved in the collections of the Museum). It was not recorded for 40 years.

In 1961, in the fauna fascicle (Panin & Săvulescu, op.cit.), the authors anticipated the presence of *Akimerus schaefferi* in Romania. Its presence in the Romanian fauna was confirmed by Andriescu (op. cit.), in 1972, who recorded it at Păltinoasa (Suceava County). The species was found later on by Dr. Nicolae Săvălescu, in Mehedinți County, at Ghelmeșioaia, in 1972, and at Gura Văii, in 1978. Collecting data of these specimens (preserved in the collections of the Museum) are presented for the first time now. In 1992, Ruicănescu found the species in Oglănicului Valley, botanical reservation downstream Gura Văii.

Brachyta balcanicus, rare species, Balkan endemic species, was recorded only from Dobrogea, from Murfatlar (Fleck, 1905) and from Agigea (Panin & Săvulescu, op.cit). Collecting data of the specimens of the collection offer new information on the distribution of the species in Romania. In Dobrogea, the species was collected from Murfatlar (1962), Hagieni (1985 – 1991), but also from Gura Apei, Retezat Mts (1956) and from Șelimbăr, Sibiu County (1963 – 1965).

In 1903 and 1904 Csiki cited the species *Brachyta interrogationis* from Cindrel (Cibin) Mountains, Măgura Cislădiei, Lotrioara, Tușnad, Mehădia. In Deszo Kenderessy's collection there is a specimen, but, unfortunately, it has no collecting data.

Taking into consideration the distribution of *Evodinellus borealis* we do not reject the idea of its presence in Romania.

Evodinellus clathratus, *Gnathacmaeops pratensis*, *Dinoptera collaris*, *Carilia virginea* and *Pidonia lurida* are well represented within collections.

As regards *Pseudogaurotina excellens*, Carpathian endemic species, it was less mentioned in literature: Transylvania, without other mentions (Petri, 1912), Retezat and Cindrel mountains – Gura Răului in the Cibin river (Petri, 1925 – 1926), Gura Apei, Răul Mare valley, Retezat Mts (Panin & Săvulescu, 1961). In 1996, a specimen was collected from Săpânța, in Maramureș (Serafim, 1997 b). The specimens from Gura Apei and from Săpânța belong to the collections of the Museum.

ACKNOWLEDGEMENTS

I thank Dr Mihai Stănescu and Mr. Alexandru Iftime for photographs and anonymous reviewers for improving the manuscript.

CATALOGUL SPECIILOR PALEARCTICE DE PRIONINAE ȘI LEPTURINAE (COLEOPTERA: CERAMBYCIDAE) DIN PATRIMONIUL MUZEULUI NAȚIONAL DE ISTORIE NATURALĂ „GRIGORE ANTIPA” (BUCUREȘTI) (Partea I)

REZUMAT

Catalogul cuprinde datele referitoare la 25 de specii paleartice de coleoptere cerambycide din subfamiliile Prioninae (triburile Prionini și Aegosomatini) și Lepturinae (triburile Oxymirini, Xylosteini, Rhamnusiini și Rhagiini) păstrate în colecțiile Muzeului Național de Istorie Naturală „Grigore Antipa”. Dintre acestea se remarcă speciile *Xylosteus spinolae*, *Rhamnusium bicolor*, *Rhagium bifasciatum*, *Akimerus schaefferi*, *Brachyta balcanicus* (endemit balcanic), *Brachyta interrogationis*, *Pseudogaurotina excellens* (endemit carpatic). Speciile cunoscute ca făcând parte din fauna României, din triburile menționate în lucrare, sunt prezente în colecțiile Muzeului. Având în vedere răspândirea speciei *Evodinellus borealis* nu excludem posibilitatea prezenței acesteia în fauna României.

LITERATURE CITED

- ANDRIESCU, I., 1972 – Contribuții asupra cunoașterii Cerambycidelor din nordul Moldovei. Muzeul de Științele Naturii Dorohoi. Studii și comunicări: 191-196. (in Romanian)
- CSIKI, E., 1903 – Magyarország Cerambycidái. Rovartani Lapok, 10 (7): 116-118.
- CSIKI, E., 1904 – Ujabb adatok Magyarország bogarfaunához. Rovartani Lapok, 11: 4-8.
- DANILEVSKY, M., 2004 – Systematic list of Longicorn Beetles (Coleoptera: Cerambycoidea) of Europe. Internet: www.uochb.cas.cz/~natur/cerambyx/list_ussr.htm
- FLECK, ED., 1905 – Die Coleopteren Rumäniens. Buletinul Societății de Științe Bucharest, 14 (5): 119-145.

- KOVÁCS, T., G. HEGYESSY, M. MEDVEGY, 1998–1999 – Foodplant data of longhorn beetles from Europe (Coleoptera: Cerambycidae). *Folia Historico-Naturalia Musei Matraensis*, 23, 2: 333-340.
- MONTANDON, A. L., 1884 – Souvenirs de Moldavie. Le domaine royal de Broșteni. *Bulletin de la Société d'Études Scientifiques d'Angers*, 14: 365-390.
- MONTANDON, A. L., 1906 – Notes sur la faune entomologique de la Roumanie. *Buletinul Societății de Științe București*, 15 (1–2): 30-80.
- NEGRU, ȘT., A. ROȘCA, 1967 – Ord. Coleoptera. *In: L'entomofaune des forêts du sud de la Dobroudja. Travaux du Muséum d'Histoire Naturelle "Grigore Antipa"*, 27: 119–145.
- PANIN, S., N. SĂVULESCU, 1961 – Coleoptera: Cerambycidae. *In: Fauna României*. Edit. Academiei Române, 10 (5): 1-523. (in Romanian)
- PETRI, K., 1912 – Siebenbürgens Käferfauna auf Grund ihrer Erforschung bis zum Jahre 1911: 1-376. Hermannstadt.
- PETRI, K., 1925 – 1926 – Ergänzungen und Berichtigungen zur Käferfauna Siebenbürgens 1912. *Verhandlungen und Mitteilungen des Siebenbürgischen Vereins für Naturwissenschaften zu Hermannstadt*, 76: 165-206. Hermannstadt.
- RUICĂNESCU, A., 1997 – Coleoptere colectate din parcurile naționale Retezat și Valea Cernei. Pp. 57-73. *In: Entomofauna parcurilor naționale Retezat și Valea Cernei. Societatea Lepidoptero-logică Română Cluj-Napoca*. (in Romanian)
- RUICĂNESCU, A., F. PATKO, 1995 – Studiul comunităților de coleoptere din Munții Parâng. *Buletinul informativ al Societății lepidopterologice române*, 6 (3–4): 217-229. (in Romanian)
- SERAFIM, R., 1985 – Contributions à la connaissance des Coléoptères Cerambycidae du sud de la Roumanie. *Travaux du Muséum d'Histoire Naturelle „Grigore Antipa”*, 27: 69-94.
- SERAFIM, R., 1993 – Contributions à la connaissance des Coléoptères Cérambycidés (Coleoptera, Cerambycidae) du Delta du Danube et du Complex lagunaire Razelm (Roumanie). *Travaux du Muséum d'Histoire Naturelle „Grigore Antipa”*, 33: 235-246.
- SERAFIM, R., 1997 a – Contributions to the knowledge of the distribution of Coccinellidae and Cerambycidae (Coleoptera) in Maramureș Depression and Rodnei Mountains (Romania). *Travaux du Muséum National d'Histoire Naturelle „Grigore Antipa”*, 37: 69-87.
- SERAFIM, R., 1997 b – Contributions to the knowledge of the Coccinellidae and Cerambycidae (Coleoptera) in the Igriș Plateau, Săpânța river basin, Maramureș (Romania). *Travaux du Muséum National d'Histoire Naturelle „Grigore Antipa”*, 39: 307-314.
- SERAFIM, R., 1998 – Coccinellidae and Cerambycidae (Coleoptera) from Vișeu river basin, Maramureș, Romania. *Travaux du Muséum National d'Histoire Naturelle „Grigore Antipa”*, 40: 509-524.
- SERAFIM, R., 1999 – Coccinellidae and Cerambycidae (Coleoptera) from the Gutâi Mountains, river Mara basin, Maramureș (Romania). *Travaux du Muséum National d'Histoire Naturelle „Grigore Antipa”*, 41: 487-504.
- SERAFIM, R., 2004 – Cerambycidae (Coleoptera) from Maramureș and Țibleș Mountains, (Romania). *Travaux du Muséum National d'Histoire Naturelle „Grigore Antipa”*, 46: 121-137.
- SERAFIM, R., M. APETREI, 1996 – Coleoptere Coccinellidae și Cerambycidae din colecția Muzeului de Științele Naturii din Piatra Neamț. *Complexul muzeal județean Neamț. Studii și cercetări*, 8: 431-453. (in Romanian)
- SERAFIM, R., S. MAICAN, 2003 - Preliminary data on the Cerambycides and Coccinellides (Coleoptera: Cerambycidae, Coccinellidae) of Piatra Craiului National Park. *In: Research in Piatra Craiului National Park*, 1: 250-261.
- SERAFIM, R., S. MAICAN, 2004 – Contributions to the knowledge of the coleopterans from the littoral of the Black Sea (Romania). *Travaux du Muséum National d'Histoire Naturelle „Grigore Antipa”*, 47: 169-210.

Received: January 5, 2005
Accepted: February 23, 2005

Muzeul Național de Istorie Naturală “Grigore Antipa”
Șos. Kiseleff 1, 011341 București 2, România
e-mail: serafim@antipa.ro