



Title	A List of the Longicorn-beetle from Saghalien, with the Descriptions of one new Species, one new Variety and one new aberrant Form
Author(s)	Tamanuki, Koichi
Citation	Insecta matsumurana, 8(2), 69-88
Issue Date	1933-10
Doc URL	<a href="http://hdl.handle.net/2115/9264">http://hdl.handle.net/2115/9264</a>
Type	bulletin (article)
File Information	8(2)_p69-88.pdf



[Instructions for use](#)

shorter than fore-tibia. Sternite 10 not notched on its posterior margin.

**14. *Siphonisca sukasii* MATSUMURA**

*Siphonisca sukasii* MATSUMURA: Matsumura, 1931, 6000 Illus. Insects Jap.-Emp., p. 1475.

Holotype ♀, Allotype ♂ ♂. More collection of fresh specimens, especially those of males are highly desirable.

Genus *Chimura* NAVÁS, 1915

**15. *Chimura aetherea* NAVÁS**

*Chimura aetherea* NAVÁS: Navás, 1915, Ent. Mitt., 4, p. 149.

This monotypic Genus was established for a poor specimen from Kyoto. I have not yet found this curious species in my four years collection in that district. For the confirmation of this genus, therefore, examination of more perfect specimens is needed.

A LIST OF THE LONGICORN-BEETLE  
FROM SAGHALIEN, WITH THE DESCRIPTIONS OF  
ONE NEW SPECIES, ONE NEW VARIETY  
AND ONE NEW ABERRANT FORM

By

KÔICHI TAMANUKI

(With one text-figure)

Not more than 59 species of Longicorn-beetle have been recorded from Saghalien by S. MATSUMURA, K. YOKOYAMA, T. KANO, H. KÔNO, K. DOI, K. MURASE, M. MATSUSHITA, G. BLESSIG, G. JACOBSON, N. PLAVILSTSHIKOV, and the author, but, as far as my studies go, 27 more species ought to be added, including one new species, one new variety, and one new aberrant form; thus it is known to us, in total, 86 species, as existing in this island.

I must acknowledge my hearty thanks to Prof. Dr. S. MATSUMURA of the Hokkaido Imperial University, Asist. Prof. Dr. T. UCHIDA, Dr. H. KÔNO, and Mr. C. WATANABE, who gave me many helpful suggestions in this investigation. My gratitude is also due to Prof. Dr. N. PLAVILSTSHIKOV in the Department of Entomology, Zoological Museum, Moscow, for his friendly help. Further I wish

to express my sincere thanks to Mr. M. HORI, entomologist of the Saghalien Central Experiment Station, for his kind advice.

### Cerambycidae

#### Subfam. *Cerambycinae*

##### Trib. *Disteniini*

1. *Distenis gracilis* BLESSIG, Horae Soc. Ent. Ross. IX, p. 168, t. 8, f. I (1873); MATSUSHITA, Doubustugaku Zasshi, XLII, 496, p. 22 (1930).  
 Loc. Distr.—Southern part (Minaminayoshi, Maoka).  
 Nom. Jap.—*Hosokamikiri*.  
 Remarks: This is not common in the southern part of west coast of Saghalien, not yet found in another part.

##### Trib. *Asemini*

2. *Asemum punctatum* BLESSIG, l. c. ix, p. 182 (1873); MATSUSHITA, l. c. XLIV, 522, p. 145 (1932).  
*Asemum amurensis* KRAATZ, Deutsche Ent. Zeitschr. XXIII, p. 97 (1879).  
 Loc. Distr.—Common in Saghalien.  
 Nom. Jap.—*Marukubi-hirata-kamikiri*.
3. *Asemum striatum* LINNÉ var. *subsulcatum* MOTSCHULSKY, Schrenck's Reise, II, p. 152 (1860); MATSUMURA, Journ. Agr. Coll. Sapporo, IV, p. 133 (1911).  
 Loc. Distr.—Common in Saghalien.  
 Nom. Jap.—*Ômarukubi-hirata-kamikiri*.
4. *Tetropium castaneum gracilicorne* REITTER, Deutsch Ent. Zeitschr. XXXIII, p. 287 (1889); PLAVILSTSHIKOV, Ent. Nachrichtenblatt, VI, p. 56 (1932).  
 Loc. Distr.—Common species in Southern Saghalien.  
 Nom. Jap.—*Todomatsu-kamikiri*.
5. *Criocephalus* (s. str.) *rusticus* LINNÉ, Syst. Nat. ed. 10, p. 395 (1758).  
 Loc. Distr.—Southern part (Ôdomari, Konuma).  
 Nom. Jap.—*Hirata-kamikiri*.
6. *Criocephalus* (*Megasemum*) *quadricostulatum* KRAATZ, l. c. XXIII, p. 98 (1879); KANO, Trans. Nat. Hist. Soc. Formosa, 85, p. 107 (1926).  
 Loc. Distr.—Southern part (Ôdomari, Toyohara, Konuma, Maoka).  
 Nom. Jap.—*O-kurokamikiri*.

##### Trib. *Lepturini*

7. *Rhagium* (*Hargium*) *inquisitor rugipenne* REITTER, Deutsche Ent. Zeitschr. XLII, p. 357 (1898); PLAVILSTSHIKOV, l. c. p. 59 (1932).

- Allorhagium inquisitor* LINNÉ, MATSUMURA, l. c. p. 134 (1911).  
 Loc. Distr.—Common in Southern Saghalien.  
 Nom. Jap.—*Haiiro-kamikiri*.
8. *Stenocorus meridianus chrysogaster* SCHRANK, Enum. Ins. p. 132 (1781);  
 MATSUSHITA, l. c. XLIV, 522, p. 145 (1932).  
*Toxolus sachalinensis* MATSUMURA, l. c. p. 133 (1911).  
*Stenocorus amurensis* KRAATZ, OKAMOTO, Insect. Matum. II, 2, p. 67 (1927).  
 Loc. Distr.—Southern part (Konuma, Toyohara).  
 Nom. Jap.—*Katabiro-hanakamikiri*.
9. *Pachyta bicuneata* MOTSCHULSKY, Schrenk's Reise, II, p. 147, t. 9, f. 25 (1860);  
 MATSUMURA, l. c. p. 134 (1911).  
 Loc. Distr.—Common throughout Saghalien.  
 Nom. Jap.—*Futamom-katabiro-hanakamikiri*.
- 9a. *Pachyta bicuneata* MOTSCHULSKY ab. *bisbimaculata* PIC, Catal. Long. Eur.,  
 p. 17, nota I (1900).  
*Pachyta quadrimacurata* LINNÉ, KANO, l. c. p. 107 (1926).  
 Loc. Distr.—Southern part (Konuma, Toyohara, Horo).
- 9b. *Pachyta bicuneata* MOTSCHULSKY ab. *incolumis* HEYDEN, Deutsche Ent.  
 Zeitscher. XXX, p. 273 (1886); TAMANUKI, Dobutsugaku Zasshi, XLV, 535, p. 233 (1933).  
 Loc. Distr.—Southern part (Konuma, Horo).  
 Remarks: This aberrant form has no black spot on the elytra.
10. *Pachyta lamed* LINNÉ, l. c. p. 391 (1758); MATSUMURA, l. c. p. 135 (1911).  
 Loc. Distr.—Southern part (Konuma, Horo, Estori).  
 Nom. Jap.—*Kataki-katabiro-hanakamikiri*.  
 Remarks: This species is very rare. I had the opportunity to investigate a single specimen from Corea, which was collected by Mr. M. EGUCHI at the district between Doryokoku and Sohyo, on the 1st of August, 1932.
11. *Evodinus borealis* GYLLENHAL, Ins. Succ. 1, 4, p. 36 (1827); MATSUSHITA, Trans.  
 Kansai Ent. Sect. 3, p. 63 (1932).  
 Loc. Distr.—Southern part (Konuma, Horo).  
 Nom. Jap.—*Kumoma-hanakamikiri*.  
 Remarks: I have one male specimen from Corea (Mt. Kambo), which was collected by Mr. F. CHO, on the 17th of July, 1932. This species seems to be the first record for Corea.
12. *Evodinus interrogationis amurensis* KRAATZ, l. c. XXIII, p. 69, t. I, f. 21-  
 23 (1879); MATSUMURA (var. *sachalinensis* MATSUMURA), l. c. p. 135 (1911).  
 Loc. Distr.—Common throughout Saghalien.  
 Nom. Jap.—*Tohoshi-hanakamikiri*.
13. *Evodinus bifasciata* OLIVER, Enc. méth. VII, p. 520 (1792); MATSUMURA, l. c. p.  
 135 (1911).  
 Loc. Distr.—Southern part (Shimizu).

Nom. Jap.—*Futasuji-katabiro-hanakamikiri*.

Remarks: No specimen, being recorded Prof. S. MATSUMURA.

14. *Evodinus mannerheimi* FALDERMANN, MOTSCHULSKY, Schrenck's Reise, II, p. 148, t. IX, f. 43 (1860); KONO et TAMANUKI, Dobutsugaku Zasshi, XXXVIII, 455, p. 284 (1926).

Loc. Distr.—Northern part (Pilwo, Parkata).

Nom. Jap.—*Sumiuro-hanakamikiri*.

Remarks: A few specimens were collected in the middle of August, 1922.

Unknown from the southern part.

15. *Acmaeopus* (s. str.) *pratensis* LAICHART, Verz. Tyr. Ins. II, p. 172 (1784); MATSUMURA, l. c., p. 134 (1911).

Loc. Distr.—Common throughout Saghalien.

Nom. Jap.—*Kurosuji-hanakamikiri*.

16. *Acmaeopus* (s. str.) *septemtrionis* TOMSON, Skand. Col. VIII, p. 61 (1866).

Loc. Distr.—Southern part (Konuma, Horo)

Nom. Jap.—*Kitakuni-hanakamikiri*.

Remarks: A few specimens were collected on the trunk of *Picea jezoensis* CARR., in August, 1932. It is the first record for Saghalien.

17. *Acmaeopus smaragdula* FABRICIUS var. *angusticollis* GEBLER

*Acmaeopus angusticollis* GEBLER, Bull. Moscou, VI, p. 304 (1833); PLAVILSTSHIKOV, l. c., p. 59 (1932).

*Acmaeopus smaragdula* GEBLER, MATSUSHITA, Zool. Mag., XLIV, 522, p. 146 (1932).

*Acmaeopus viridula* MATSUMURA, l. c., p. 134 (1911).

Loc. Distr.—Very common every where.

Nom. Jap.—*Koao-hanakamikiri*.

18. *Sachalinobia koltzei* HEYDEN, Deutsche Ent. Zeitschr. XXXI, p. 304 (1887); JACOBSON, Ann. Mus. Zool. St. petersb. IV, p. 39 (1899).

Loc. Distr.—Southern part (Kaizuka, Toyohara, Konuma, Horo, Tomarikishi).

Nom. Jap. *Arame-hanakamikiri*.

- \*19. *Gaurotis virginea* LINNÉ var. *thalassina* SCHRANK, Ins., p. 160 (1781); PLAVILSTSHIKOV, l. c., p. 59 (1932).

Loc. Distr.—Southern part (Odomari, Toyohara, Maoka etc.).

Nom. Jap.—*Kubiaka-ruri-hanakamikiri*.

\*I have another Korean subspecies of *Gaurotis virginea*, *kozhevnikovi* PLAVILSTSHIKOV, which resembles much var. *thalassina* SCHRENK, but differs from it as follows:

- 1) Much smaller. Length 8 mm. Width 3 mm.
- 2) Abdominal segments entirely black.
- 3) Elytra brightly green.

A single male specimen was taken at the district between Doryokoku and Sohyo, on the Ist of August, 1932 by Mr. M. EGUCHI. This species is hitherto unrecorded from Korea.

Loc. Distr.—Doryokoku-Sohyo.

Gen. Distr.—Manchuria, Korea.

Nom. Jap.—*Koma-kubiaka-hanakamikiri*.

20. *Gaurotis ussuriensis* BLESSIG, l. c., p. 247 (1873); MATSUSHITA, l. c., XLII, 495, p. 23 (1930).

Loc. Distr.—Southern part (West coast).

Nom. Jap.—*Ussuri-hanakamikiri*.

21. *Nivellia sanguinosa* GYLLENHAL, Ins. Suec., I, 4, p. 21 (1827); PLAVILSTSHIKOV, l. c. p. 60 (1932).

*Leptura (Pidonia) rubripennis* MATSUMURA, l. c. p. 138 (1911).

Loc. Distr.—Southern part (Konuma, Horo).

Nom. Jap.—*Kubiboso-hanakamikiri*.

Remarks: I have a single male Korean species, which was taken at Futenppo in June 17, 1932, by Mr. M. EGUCHI. Hitherto unrecorded from Korea.

22. *Allosterna elegantula* KRAATZ, Deutsch. Ent. Zeitschr., XXIII, p. 105 (1879).

Loc. Distr.—Southern part (Toyohara, Takinohara, Konuma, Horo).

Nom. Jap.—*Kuro-lime-hanakamikiri*.

Remarks: A few specimens were collected in July and August, 1929–32.

This is hitherto unknown from Saghalien, being only reported as occurring in the Amur.

- 22a. *Allosterna elegantula* KRAATZ var. *debilis* n. var.

Resembles the typical *elegantula*, but differs from it in the following points:

- 1). Body much smaller and slenderer. Length 5.7 mm. Width 1.5 mm.
- 2). Hind and middle legs yellow, except the femur of middle legs at the base and apex testaceous.

Holotype—Konuma, July 20, 1929; in the author's collection. Type is preserved in the Entomological Laboratory of Saghalien Central Experiment Station.

23. *Grammoptera cyanea* n. sp. (Fig. 1)

♂. Elegant and pretty species. Body slender. Antenna, prothorax, legs and underside of the body blackish. Elytra bronze-coloured, shining. Head ornamented with rather coarse and deep punctures.

Antenna black, with each apex of basal three joints yellowish brown. Labrum and clypeus black, with bases strongly coarsely punctured, apices yellowish brown. Both palpi brownish black; occiput with a few golden yellow pubescence and rather coarse punctures.

Prothorax rather campanuliform, partly convex, at each side of hind angles short and rather blunt. Prothorax punctured as in the head, with silky pale golden pubescence.

Scutellum black, depressed, with very deep punctures and gray pubescence.

Elytra much narrower, cylindrical, covered with some dark gray pubes-

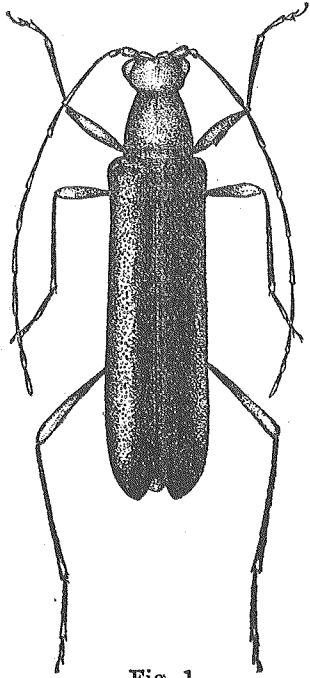


Fig. 1

*Grammoptera cyanea* TAMANUKI

♂ (×95)

cence, about five times as long as prothorax, coarsely punctured, coarser than on the prothorax, being strongly bronze-shining.

Legs very long and slender.

Underside of the body black, with a dark gray pubescence. Length 9. mm. Width 2mm.

Holotype—Collected by the author, on July 17, 1930, at the foot of Mt. SUZUYA.

Type is preserved in the Entomological Laboratory of Saghalien Central Experiment Station.

Loc. Distr.—Southern part (The foot of Mt. Suzuya).

Nom. Jap.—*Ruriiro-hime-hanakamikiri*.

Remarks: A male specimen taken by the author, on the flowers of *Angelica*-species. This species seems to approach *G. ustrata*, but easily distinguished from the latter by the ground colour and the characteristic tubercle of elytron, etc.

**24. *Allosterna tabacicolor* DEGEER var. *bivittis***

MOTSCHULSKY, Schrenk's Reise, II, p. 146, t. 9, f. 12 (1960); MATSUMURA, l. c. XLII, 496, p. 24 (1930).

Loc. Distr.—Common in Saghalien.

Nom. Jap.—*Hokuchi-hime-hanakamikiri*.

**24a. *Allosterna tabacicolor* DEGEER var. *fusca* MATSUSHITA, l. c., p. 24 (1930).**

Loc. Distr.—Common in Saghalien.

**25. *Leptura (Anoplodermorpha) cyanea* GEBLER, Nouv. Mém. Moscou II, p. 70 (1832); OKAMOTO, l. c., p. 72 (1927).**

Loc. Distr.—Southern part (Toyohara, Konuma, Horo).

Nom. Jap.—*Midori-hanakamikiri*.

**26. *Leptura* (s. str.) *dubia* SCOPOLI, Ent. Carniol. p. 47 (1763); BLESSIG, l. c., IX, p. 254 (1873).**

Loc. Distr.—Recorded by BLESSIG from Saghalien.

Loc. Distr.—Northan part?

Nom. Jap.—*Hime-aka-hanakamikiri*.

**27. *Leptura* (s. str.) *renardi* GEBLER, Bull. Moscou, XXI, I, p. 420 (1848); MATSUSHITA, Trans. Kansai Ent. Socit. 3, p. 64, f. I (1932).**

Loc. Distr.—Southern part (Horo, Tomarikishi, Chirie).

Nom. Jap. *Karafuto-kuro-hanakamikiri*.

**28. *Leptura* (s. str.) *scotodes* BATES, Ann. Mag. Nat. Hist. (4), XII, p. 194 (1873); MATSU-**

SHITA, *Dobutsugaku Zasshi*, XL, 495, p. 255 (1930).

*Leptura atterima* MATSUMURA, l. c., p. 136 (1911).

Loc. Distr.—Common in Saghalien.

Nom. Jap.—*Tsuyakeshi-hanakamikiri*.

**29. *Leptura* (s. str.) *sequersi* REITTER**, *Wien. Ent. Zeit.*, XVII, p. 194 (1898).

*Leptura fulva* MATSUMURA, l. c., p. 136 (1911); OKAMOTO, l. c., p. 71 (1927).

Loc. Distr.—Very common.

Nom. Jap.—*Yokoguro-hanakamikiri*.

**29a. *Leptura* (s. str.) *sequersi* REITTER var. *sashalinensis* MATSUSHITA**, *Ins. Mats.*, VII, 3, p. 104, f. 2 (1933).

Loc. Distr.—Southern part (Ichinosawa, Kaizuka, Horo, Shiraura, Koutori); Northern part (Tsuimofu).

**30. *Leptura* (s. str.) *succedanea* LEWIS**, *Ann. Mag. Nat. Hist.* (5), IV, p. 464 (1873); MATSUMURA, l. c., p. 135 (1911).

Loc. Distr.—Very common in Saghalien.

Nom. Jap.—*Aka-hanakamikiri*.

Remarks: So far as the author's investigations go, this species is undoubtedly *Leptura fulva* DEGEER of Dr. MATSUMURA. PLAVIRSTSHIKOV said that *fulva* DEGEER is not distributed in Saghalien.

**31. *Leptura* (s. str.) *variicornis* DALMAN**, in *Schönh. Syn. Ins.*, I, 3, p. 482, Nota f. (1817); MATSUMURA, l. c., p. 136 (1911).

Loc. Dist.—Common in Saghalien.

Nom. Jap.—*Buchihige-hanakamikiri*.

**31a. *Leptura* (s. str.) *variicornis* DALMAN ab. *nigromarginata* n. ab.**

Differs from the typical specimen in having a black margin of elytron.

Holotype—August 13, 1931; in the author's collection. Type is preserved in the Entomological Laboratory of Saghalien Central Experiment Station.

Loc. Distr.—Southern part (Konuma).

Remarks: One female specimen collected by the author at Konuma on August 13, 1931.

**32. *Leptura* (s. str.) *virens* LINNÉ**, l. c., p. 397 (1758); BLESSIG, l. c., p. 254 (1873).

Loc. Distr.—Most common in Saghalien.

Nom. Jap.—*Ao-hanakamikiri*.

**33. *Judolia sexmaculata* LINNÉ var. *paralleopipeda* MOTSCHULSKY**, Schrenck's *Reise*, II, p. 146, t. 9, f. 23 (1860); KÔNO et TAMANUKI, (subsp. *shirarakensis* MATSUMURA) l. c., XXXVIII, p. 285 (1926).

*Leptura (Pidonia) shirarakensis* MATSUMURA, l. c., p. 137 (1911).

Loc. Distr.—Rather common in Saghalien.

Nom. Jap.—*Shiraraka-hanakamikiri*.

**34. *Oedecnema dubia* FABRICIUS**, *Spec. Ins.* I, p. 249 (1781); OKAMOTO, l. c., p. 69 (1927).



- Leptura (Strangalia) 10-maculata* MATSUMURA, l. c., p. 136 (1911).  
 Loc. Distr.—Common in Saghalien.  
 Nom. Jap.—*Ashibuto-hanakamikiri*.
35. *Strangalia* (s. str.) *aethiops* PODA, Ins. Mus. Graec., p. 38 (1761); MATSUMURA, l. c. p. 136 (1911).  
 Loc. Distr.—This species is common in Saghalien.  
 Nom. Jap.—*Ko-kuro-hanakamikiri*.
36. *Strangalia* (s. str.) *arcuata* PANZER, Fauna Ins. Germ. VIII, t. 12 (1793); MATSUMURA, l. c., p. 136 (1911).  
*Leptura cometes* MATSUMURA, l. c., p. 136 (1911).  
 Loc. Distr.—Common species in Saghalien.  
 Nom. Jap.—*Yotsuboshi-hanakamikiri*.
37. *Strangalia* (s. str.) *duodecimgutata* FABRICIUS, Syst. El. II, p. 363 (1801).  
 Loc. Distr.—Southern part (Konuma, Horo, Konotoro).  
 Nom. Nap.—*Kimon-hanakamikiri*.  
 Remarks: A few specimens were taken upon the flowers of Umbelliferous species, in July and August, 1927–1932.  
 This is hitherto unrecorded from Saghalien.
38. *Strangalia* (s. str.) *ochraceofasciata* MOTSCHULSKY, Etud. Ent. X, p. 21 (1816).  
 Loc. Distr.—Southern part (Tokombo).  
 Nom. Jap.—*Yosuji-hanakamikiri*.
39. *Strangalia* (s. str.) *quadrifasciata* LINNÉ, l. c., p. 398 (1758); MATSUMURA, l. c., p. 135 (1911).  
 Loc. Distr.—Common throughout Saghalien.  
 Nom. Jap.—*Karafuto-yosuji-hanakamikiri*.
40. *Strangalia* (s. str.) *thoracica* CREUZER ab. *obscurissima* PIC, Ann. Soc. Ent. Belg. XLIV, p. 17 (1900); TAMANUKI, (ab. *japonica* TAMANUKI), l. c., XLV, 535, p. 233 (1933).  
*Strangalia granulata* BATES, Matsumura, l. c., p. 137 (1911).  
 Loc. Distr.—Southern part (Toyohara, Konuma, Shiritori).  
 Nom. Jap.—*Kuro-ô-hanakamikiri*.
41. *Strangalia* (s. str.) *vicaria* BATES, Journ. Linn. Soc. Lond. Zool. XVIII, p. 218 (1884); MATSUMURA, l. c., p. 135 (1911).  
 Loc. Distr.—Southern part (Kiminai, Konuma, Shimizu, Shiraura).  
 Nom. Jap.—*Futasuji-hanakamikiri*.
42. *Strangalia (Sphenalia) xanthoma* BATES, Ann. Mag. Nat. Hist. (4) XII, p. 195 (1873).  
 Loc. Distr.—Southern part (Konuma).  
 Nom. Jap.—*Kataki-hanakamikiri*.  
 Remarks: Only three specimens were captured at Konuma in the middle

of July, 1929 and 1931, by the author. Hitherto unrecorded from Saghalien.

- 43. *Strangalia (Strangalina) attenuata*** LINNÉ, l. c., p. 398 (1758); Kano, l. c., 85, p. 107 (1926).

Loc. Dist.—Southern part (Furumaki).

Nom. Jap.—*Yosuji-hoso-hanakamikiri*.

Remarks: Kano recorded from the southern part, but it seems to be an aberrant form of *Strangalia arcuata* PANZER.

- 44. *Strangalia (Strangalina) regalis*** BATES, Journ. Linn. Soc. Lond. Zool., XVIII, p. 223 (1884).

Loc. Distr.—Southern part (east coast).

Nom. Jap.—*Ômutsumon-hanakamikiri*.

Remarks: I have a single male specimen which was taken at the east coast, on August, 1929.

#### Trib. *Necydalini*

- 45. *Necydalis pennata*** LEWIS, Ann. Mag. Nat. Hist. (5) IV, p. 464 (1897).

Loc. Distr.—Southern part (Honto, Komuma, Horo).

Nom. Jap.—*Hoso-kobanekamikiri*.

Remarks: A series of this specimens were taken at Honto, Konuma and Horo in July, 1930–32. This species ranges from Honshu to Hokkaido. Hitherto unrecorded from Saghalien.

- 46. *Necydalis sachalinensis*** MATSUMURA et TAMANUKI, Insect. Matsum. I, p. 176 (1927).

Loc. Distr.—Southern part (Ichinosawa, Furumaki, Horo, Higashisakutan).

Nom. Jap.—*Karafuto-hosokobanekamikiri*.

- 47. *Necydalis solida*** BATES, Journ. Linn. Soc. Lond. Zool. XVIII, p. 225 (1884); KANO, l. c., 85, p. 107 (1929).

Loc. Distr.—Southern part (Kiminai).

Nom. Jap.—*Ô-hosokobanekamikiri*.

#### Trib. *Molorchini*

- 48. *Molorchus (Caenoptera) minor*** LINNÉ, l. c., p. 421 (1758); Matsumura, l. c., p. 139 (1911).

Loc. Distr.—Southern part (Ichinosawa, Konuma, Horo).

Nom. Jap.—*Shiraboshi-kobanekamikiri*.

#### Trib. *Obrini*

- 49. *Obrium gracilis*** PAVILSTSHIKOV, Wood-boring Beetles, p. 190 (1932).

Loc. Distr.—Southern part (Konuma).

Nom. Jap.—*Chibi-kamikiri*.

Remarks: Three specimens were collected on the 15th of June by Mr. HORI. This is the first record for Saghalien.

Trib. *Callichromini*

50. *Armia moschata* LINNÉ var. *orientalis* PLAVILSTSHIKOV, l. c., VII, p. 12 (1932).  
*Aromia moschata* LINNÉ var. *ambrosiaca* STEVEN, KANO, l. c., p. 107 (1926).  
 Loc. Distr.—Southern part (Ôdomari, Toyohara, Konuma, Horo, Noda).  
 Nom. Jap.—*Jakô-kamikiri*.
51. *Leontium viride* THOMSON, Syst. Ceramb., p. 175 (1864).  
 Loc. Distr.—Southern part (Konuma, Horo).  
 Nom. Jap.—*Midori-kamikiri*.  
 Remarks: Numerous specimens were collected in the July and August, 1927-1933, by the author.  
 This is the first recorded for Saghalien.
52. *Pronocera brevicollis* GEBLER var. *ruficollis* MATSUMURA, l. c., p. 138 (1911);  
 PLAVILSTSHIKOV, l. c., p. 60 (1932) (*sibirica* GEBLER ab. *ruficollis* MATSUMURA).  
*Rhopalopus ruficollis* MATSUMURA, l. c., p. 138 (1911).  
 Loc. Distr.—Southern part (Tonnai, Konuma, Horo).  
 Nom. Jap.—*Kubiaka-hiratakamikiri*.
- 52a. *Pronocera brevicollis* GEBLER var. *daurica* MOTSCHULSKY, Bull. Moscou XXXII, 2, p. 494 (1859).  
 Loc. Distr.—Southern part (Konuma).  
 Remarks: I have one male specimen, collected by Mr. T. KUROSAWA at Konuma on the late of July, 1930. This resembles *P. brevicollis* var. *ruficollis*, but smaller and the anterior margin of prothorax infuscated.
53. *Callidium coriacium* PAYKULL, Fauna Suec. III, p. 91 (1800).  
 Loc. Distr.—Southern part (Shiritori).  
 Nom. Jap.—*Bronze-hiratakamikiri*.
54. *Callidium violacium* LINNÉ, l. c., p. 395 (1758); KANO, l. c., p. 107 (1926).  
 Loc. distr.—Rather common in Saghalien.  
 Nom. Jap.—*Ruriuro-hiratakamikiri*.

Trib. *Clytini*

55. *Xyloclytus altaicus* GEBLER, Bull. Moscou, IX, p. 342 (1836); PLAVILSTSHIKOV, l. c. VII, p. 14 (1933).  
 I have no specimen. Recorded by PLAVILSTSHIKOV from the northern part.  
 Loc. Distr.—Northern Saghalien.  
 Nom. Jap.—*Altai-torakamikiri*.
56. *Xylotrechus clarinus* BATES, Journ. Linn. Soc. Lond. Zool., p. 231 (1884).  
 Loc. Distr.—Southern part (Konuma, Kawakami).

Nom. Jap.—*Tsumaki-torakamikiri*.

Remarks: A few specimens were taken at Konuma and Kawakami, in July and Augst, 1929–1932.

57. *Xylotrechus rusticus* LINNÉ, Syst. Nat. ed. 10, p. 398 (1758); MATSUMURA, Illustr. Insect Jap.-Empire, p. 271, f. 859 (1931).

Loc. Distr.—Southern part (Kiminai, Ichinosawa, Konuma, Horo).

Nom. Jap.—*Kuwayama-torakamikiri*.

58. *Clytus arietoides* REITTER, Deutsche Ent. Zeitsch., p. 281 (1899).

Loc. Distr.—Southern part (Horo).

Nom. Jap.—*Kyokuto-torakamikiri*.

Remarks: One male specimen was collected by the author, on August 12, 1932. This species has been hitherto unknown from Saghalien, being reported as occurring in East-Siberia and North-China.

59. *Cyrtoclytus caproides* BATES, Ann. Mag. Nat. Hist. (4) XII, p. 200 (1873).

Loc. Distr.—Southern part (Tokombo, Maoka),

Nom. Jap.—*Kisuji-torakamikiri*.

Remarks: This is the first record for Saghalien, but occurs commonly throughout Hokkaido and Honshu.

60. *Cyrtoclytus capra* GERMAR, Ins. spec. nov., p. 518 (1824); TAMANUKI, Dobutsugaku Zasshi, XXXIX, 460, p. 79 (1927).

Loc. Distr.—Rather common in Saghalien.

Nom. Jap.—*Inazuma-torakamikiri*.

61. *Chlorophorus gracilipes* FALDERMAN, Mém. Acad. St. Petersb. II, p. 436 (1835); PLAVILSTSHIKOV, l. c., p. 60 (1932).

*Clytanthus sachalinensis* MATSUMURA, l. c., p. 139 (1911).

Loc. Distr.—Common in Southern Saghalien.

Nom. Jap.—*Hosoashi-torakamikiri*.

62. *Chlorophorus herbsti faldermanni* FALDERMANN, Fauna Transc. II, p. 269, t. 8, f. 3 (1837).

Loc. Distr.—Southern part (Konuma).

Nom. Jap.—*Faldermann-ao-torakamikiri*.

63. *Chlorophorus motschulsky* GANGLBAUER ab. *blessigi* PLAVILSTSHIKOV, Ent. Blätter, XXVIII, 2, p. 62 (1932).

Loc. Distr.—Southern part (Honto).

Nom. Jap.—*Kuro-torakamikiri*.

Remarks: One male specimen was collected by the author, on July 26, 1930. This species occurs commonly throughout Korea and Japan-proper and found in West-Siberia and Manchuria.

Subfam. *Laminae*Trib. *Dorcadionini*

64. *Plectrura (Phlyctidola) metalica* BATES var. *sachalinica* JACOBSON, JACOBSON, I. c. Ann. Mus. Zool. St. Petersburg, IV, p. 43, 44 (1899); MATSUMURA, (*P. metalica* BATES), I. c., (*Plectrura sachalinica*).  
 Loc. Distr.—Rather common in Saghalien.  
 Nom. Jap.—*Akagane-kamikiri*.

Trib. *Lamini*

65. *Lamia textor* LINNÉ, I. c., p. 392 (1758); KÓNO et TAMANUKI, I. c., XXXVIII, 455, p. 291 (1926).  
*Lamia yezoensis* MATSUMURA, DOI, Kontyu sekai, XXXVIII, 327, p. 378 (1926).  
 Loc. Distr.—Northern part (Alexandrowsk).  
 Nom. Jap.—*Yezo-kamikiri*.

Trib. *Monochamini*

66. ? *Monochammus galloprovincialis* OLIVER, var. *pistor* GERMAR, Mag. Ent. III, p. 242 (1818).  
*Monochammus suzukii* MATSUMURA, MURASE, Kontyu sekai, XL, p. 299 (1926).  
 Loc. Distr.—Southern part (Konuma, Horo, Tomarikisi, Nairo).  
 Nom. Jap.—*Kurafuto-higenagakamikiri*.  
 Remarks:—This species is rather common in the southern part, but it is the first record from Saghalien.
67. *Monochammus rosenmülleri* CEDERJHELM, Fauna Ingr. Prodr., p. 89, f. 2 g (1798); MATSUSHITA, Dobutsugaku Zasshi, XLIV, 522, p. 146 (1932).  
*Monochammus sartor* BLESSIG, I. c., p. 200 (1873).  
*Monochammus sartor* FABRICIUS var. *quadrimaculatus* MOTSCHULSKY, Matsumura, I. c., p. 139 (1911).  
*Monochammus sutur, rosenmülleri* CEDERJ., YOKOYAMA et KANO, I. c., p. 33 (1911).  
*Monochammus grandis* BATES, MURASE, I. c., p. 299 (1926).  
 Loc. Distr.—Very common in Saghalien.  
 Nom. Jap.—*Yotsuboshi-higenagakamikiri*.
68. *Monochammus sutor* LINNÉ var. *pellio* GERMAR, Mag. Ent. III, p. 244 (1818); MATSUMURA, I. c., p. 140 (1911).  
 Loc. Distr.—Common in Saghalien.  
 Nom. Jap.—*Ko-shirofu-higenagakamikiri*.

Trib. *Mesosini*

69. *Mesosa japonica* BATES, Ann. Mag. Nat. Hist. (4) XII, p. 312 (1873); KÓNO et TAMANUKI, I. c., XXXVIII, p. 286 (1926).  
 Loc. Distr.—Southern part (Konuma, Horo).

Nom. Jap.—*Gomadara-kamikiki*.

**70. *Mesosa myops* DAHLMAN**

Loc. Distr.—Southern part (Konuma, Horo).

Nom. Jap.—*Hannoki-gomadara-kamikiri*.

Remarks: A few specimens were collected by the author, in July and August, on the trunk of *Alnus hirsuta* TURCZ. This species has been hitherto unrecorded from Saghalien.

Trib. *Dorcaschematini*

**71. *Olenecamptus octopustulatus* MOTSCHULSKY**, Schrenck's Reise, II, p. 152, t. 10, f. 3 (1860).

Loc. Distr.—Southern part (Konuma).

Nom. Jap.—*Shiromon-hosokamikiri*.

Remarks: Only one male specimen was taken by Mr. T. KUROSAWA at Konuma on July 31, 1928. This species has been hitherto not known from Saghalien.

Trib. *Pogonocherini*

**72. *Pogonocherus (Pityphilus) fasciculatus pulus* MATSUSHITA**, Kontyu sekai, XXXV, 411, p. 376 (1931).

Loc. Distr.—Southern part (Konuma).

Nom. Jap.—*Hime-shiraobikamikiri*.

Remarks: One male specimen was taken by Mr. M. TAKAHASHI on September 22, 1931. This is the first record for Saghalien.

Trib. *Apomecynini*

**73. *Asaperda agapanthina* BATES**, l. c., XII, p. 386 (1873).

Loc. Distr.—Southern part (Konuma).

Nom. Jap.—*Shinano-kurofu-kamikiri*.

Remarks: This is the first record for Saghalien.

Trib. *Acanthoderini*

**74. *Acanthoderes* (s. str.) *clavipes* SCHRANK**, Enum. Ins., p. 135 (1781).

Loc. Distr.—Southern part (Konuma).

Nom. Jap.—*Yamanarashi-momobuto-kamikiri*.

Remarks: One male and female specimens were taken by Mr. Y. KIKAWA, in Augst 9, upon the trunk of *Opulus Sieboldii* MIQ. Hitherto unrecorded from Saghalien.

Trib. *Acanthocinini*

75. *Acanthocinus* (s. str.) *carinulatus* GEBLER, Bull. Moscou, VI, p. 302 (1833);  
MATSUSHITA, Hokkaido Sanrin Kaiho, XXX, 352, p. I (1932).  
*Acanthocinus oppocinus* CHEVROLAT, MATSUMURA, l. c., p. 140 (1911).  
Loc. Distr.—Very common in coniferous forests of Saghalien.  
Nom. Jap.—*Karafuto-momobutokamikiri*.
76. *Acanthocinus* (s. str.) *stillatus* BATES, Journ. Linn. Soc. Lond. Zool. XVIII, p. 254 (1884).  
Loc. Distr.—Southern part (Shiritori).  
Nom. Jap.—*Gomadara-momobutokamikiri*.  
Remarks: Only one male and one female were collected on the 15th of July 1931, by Mr. M. YOSHIKURA. This is the first record for Saghalien.

Trib. *Agapanthini*

77. *Agapanthia* (s. str.) *daurica* GANGLBAUER, Best.-Tab. VIII, p. 110 (1884); PLAVILSTSHIKOV, l. c., p. 60 (1932).  
*Agapanthia lineatocollis* DONOVAN, l. c., p. 140 (1911).  
Loc. Distr.—Southern part (Ôdomari, Toyohara, Konuma, Horo).  
Nom. Jap.—*Kemadara-kamikiri*.

Trib. *Saperdini*

78. *Saperda balsamifera* MOTSCHULSKY, Schrenck's Reise, II, p. 151 (1860).  
Loc. Distr.—Southern part (Konuma.)  
Nom. Jap.—*Kiboshi-madara-kamikiri*.  
Remarks: Only one specimen was collected on the 10th of July, 1931, by Mr. T. KUROSAWA. Hitherto unrecorded from Saghalien.
79. *Saperda laterimaculata* MOTSCHULSKY, Schrenck's Reise, II, p. 151 (1860); MATSUSHITA, Trans. Kansai, Ent. Soc. 3, p. 65 (1932).  
*Saperda scalaris* MURASE, l. c., p. 299 (1926).  
Loc. Distr.—Southern part (Tonnai, Ôdomari, Toyohara, Konuma, Horo, Nairo).  
Nom. Jap.—*Heriguro-ao-kamikiri*.
80. *Saperda octomaculata* BLESSIG var. *incana* PLAVILSTSHIKOV, l. c., V, p. 85 (1931).  
Loc. Distr.—Southern part (Ichinosawa, Konuma).  
Nom. Jap.—*Haiiro-yahoshi-kamikiri*.  
Remarks: This species was described by PLAVILSTSHIKOV, being rather rare in the southern part.
81. *Eutetrappa metallescens* MOTSCHULSKY var. *chrysargyrea* BATES, Journ. Linn. Zool. XVIII, p. 256 (1884); KANO, (*E. chrysargyrea* BATES), l. c., p. 107 (1927).

Loc. Distr.—Southern part (Konuma, Aihama, Horo, Noborippo).

Nom. Jap.—*Hanno-oruri-kamakiri*.

**82. *Eutetrappa variicornis*** BATES, l. c., p. 256 (1884).

Loc. Distr.—Southern part (Konuma, Horo).

Nom. Jap.—*Shina-kamikiri*.

Remarks: This species is rather common in the southern part, found on the trunk of *Salix cardiophylla* TRAUTV. et MEY. It is the first record for Saghalien.

**83. *Menesia sulphurata*** GEBLER, in Hummel Essais, IV, p. 52 (1825).

Loc. Distr.—Southern part (Konuma).

Nom. Jap.—*Kimon-hime-kamikiki*.

Remarks: I have two male and one female specimens which were captured by the author at Konuma in the middle of July, 1930. It is the first record for Saghalien.

**84. *Cagosima sanguinolenta*** THOMSON, Syst. Cerb., p. 116 (1864); KANO, l. c., p. 107 (1926).

Loc. Distr.—Southern part (Furumaki).

Nom. Jap.—*Hanno-kamikiri*.

Remarks: I have no specimen. It is recorded by KANO.

**85. *Glenea* (s. str.) *relicta*** PASCOE, Trans. Ent. Soc. Lond., (2) IV, p. 258 (1858).

Loc. Distr.—Southern part (Honto).

Nom. Jap. *Shirahoshi-kamikiri*.

Remarks: Two male specimens were taken at Honto (west coast), in the late August, 1931, by the author.

Trib. *Phytoecini*

**86. *Oberea rufomaculata*** KONO et TAMANUKI, l. c., XVIII, p. 286, f. 2, 3 (1926).

Loc. Distr.—Northern part (Tuimov).

Nom. Jap.—*Akaboshi-kamikiri*.



A LIST OF THE GEOGRAPHICAL DISTRIBUTION OF  
THE LONGICORN-BEETLE FROM SAGHALIEN

Species	Localities										Other localities		
	Kuriles	Hokkaido	Honshu	Shikoku	Kiusiu	Formosa	S. Korea	N. Korea	Manchuria	Europe		E. Siberia	W. Siberia
Subfam. <i>CERAMBYCINAE</i>													
1. <i>Distenia gracilis</i> BLESS.		x	x	x	x		x				x		
2. <i>Asemum punctatum</i> BLESS.		x	x	x	x		x	x	x		x		
3. <i>A. striatum</i> L.										x		x	
var. <i>subsulcatum</i> MOTSCH.		x									x		
4. <i>Tetropium castaneum</i> L.										x		x	
Subsp. <i>gracilicorne</i> REITT.		x						x	x		x		
5. <i>Criocephalus rusticus</i> L.		x	x				x	x		x	x	x	
6. <i>C. quadricostulatum</i> KRTZ.		x						x			x	x	
7. <i>Rhagium inquisitor</i> L.										x		x	
Subsp. <i>rugipenne</i> REITT.		x	o		o	o	x	x	x		x		
8. <i>Stenocorus meridianus</i> L.											x		
Subsp. <i>chrysogaster</i> SCHRANK								x	x	x	x	x	
9. <i>Pachyta bicuneata</i> MOTSCH.								x	x		x		
ab. <i>bisbimaculata</i> PIC									x		x		
ab. <i>incolumis</i> HEYD.											x		
10. <i>Pachyta lamed</i> L.		x						x		x	x	x	
11. <i>Evodinus borealis</i> GYLLENH.			x					x		x	x	x	
12. <i>Evodinus interrogationis</i> L.										x		x	
Subsp. <i>anurensis</i> KRTZ.								x	x		x		
13. <i>E. bifasciatus</i> OLIV.								x			x		
14. <i>E. mannerheimi</i> FAID.											x		
15. <i>Acmacopus pratensis</i> LAICH.										x	x	x	
16. <i>A. septentrionis</i> THOMS.										x	x	x	

o : Other subspecies, varieties and aberrant forms.

Species	Localities										Other localities		
	Kuriles	Hokkaido	Honshu	Shikoku	Kyushu	Formosa	S. Korea	N. Korea	Manchuria	Europe		E. Siberia	W. Siberia
17. <i>A. smaragdula</i> F.										x		x	
var. <i>angusticollis</i> GEBL.										x		x	
18. <i>Sachalinobia koltzei</i> HEYD.		x	x									x	
19. <i>Gaurotis virginea</i> L.										x			
var. <i>thalassina</i> SCHRANK										x	x	x	
20. <i>G. ussuriensis</i> BLESS.		x					x	x			x		
21. <i>Nivellia sanguinosa</i> GYLL.								x		x	x	x	
22. <i>Grammoptera cyanea</i> TAMAN.													
23. <i>Allosterna elegantula</i> KRYZ.											x		
var. <i>debiis</i> TAMAN.											?		
24. <i>A. tabacicolor</i> DEGEER										x		x	
var. <i>bivittis</i> MOISCH.		x									x		
var. <i>fusca</i> MATSUSH.		x											
25. <i>Leptura cyanea</i> GEBL.	x	x	x					x			x		
26. <i>L. dubia</i> SCOP.								x		x	x	x	
27. <i>L. renardi</i> GEBL.									x		x		N. Mongolia
28. <i>L. scotodes</i> BATS.	x	x	x		x						?		
ab. <i>nipponensis</i> PIC	x	x	x		x						?		
29. <i>L. sequens</i> REITT.								x			x		
var. <i>sachalinensis</i> MATSUSHITA													
30. <i>L. succedanea</i> LEWIS	x	x	x	x			x	x	x		x		
31. <i>L. variicornis</i> DALM.	x	x	x					x	x	x	x	x	
ab. <i>nigromarginata</i> TAMAN.													
32. <i>L. virens</i> L.										x	x	x	
33. <i>Judolia sexmaculata</i> L.										x		x	
var. <i>parallelopipeda</i> MOTSCH.	x	x						x	x		x		
34. <i>Oedecnema dubia</i> F.	x							x	x	x	x	x	

Species	Localities										Other localities	
	Kuriles	Hokkaido	Honshu	Shikoku	Kiushu	Formosa	S. Korea	N. Korea	Manchuria	Europe		E. Siberia
35. <i>Strangalia aetiops</i> PODA	x	x					x	x	x	x	x	x
36. <i>S. arcuata</i> PANZ.	x	x	x	x				x	x	x	x	x
37. <i>S. duodecimgutata</i> F.								x			x	x
38. <i>S. ochraceofasciata</i> MOTSCH.		x	x									
39. <i>S. quadrifasciata</i> L.										x	x	x
40. <i>S. thorasica</i> CREUZ.										x	x	x
ab. <i>obscurissima</i> PIC		O						O	O			
41. <i>S. vicaria</i> BATS.		x	x	x								
42. <i>S. xanthoma</i> BATS.		x	x									
43. <i>S. attenuata</i> L.								x		x	x	x
44. <i>S. regalis</i> BATS.		x	x		x							
45. <i>Necydalis pennata</i> LEW.		x	x	x								
46. <i>N. sachalinensis</i> MATS. et TAM.												
47. <i>N. solida</i> BATS.		x	x									
48. <i>Molorchus minor</i> L.										x	x	x
49. <i>Obrium gracilis</i> PLAVST.											x	
50. <i>Aromia moschata</i> L.										x		x
var. <i>orientalis</i> PLAVST.		x	x					x	x		x	
51. <i>Leontium viride</i> THOMS.		x	x	x								
52. <i>Pronocera brevicollis</i> GEBL.											x	x
var. <i>daurica</i> MOTSCH.									x		x	
var. <i>ruficollis</i> MATS.												
53. <i>Callidium coriaceum</i> PAYK.										x	x	x
54. <i>C. violacium</i> L.		?	?							x	x	x
55. <i>Xyloclytus altaicus</i> GEBL.											x	x
56. <i>Xylotrechus clarinus</i> BATS.		x										
57. <i>X. rusticus</i> L.		x								x	x	x

Species	Localities										Other localities		
	Kuriles	Hokkaido	Honshu	Shikoku	Kiushu	Formosa	S. Korea	N. Korea	Manchuria	Europe		E. Siberia	W. Siberia
58. <i>Clytus arietoides</i> REITT.								x			x		
59. <i>Cyrtoclytus capra</i> GERM.								x	x	x	x	x	
60. <i>C. caproides</i> BATS.		x	x	x									
61. <i>Chlorophorus gracilipes</i> FALD.		x	x				x	x	x	x	x	x	
62. <i>C. herbsti fardermanni</i> FALD.								x		x	?		
63. <i>C. motschulskyi</i> GANGLB.		x	x					x	x		x	x	Mongolia, N. China
Subfam. LAMINAE.													
64. <i>Plectrura metalica</i> BATS.		x	x	x	x								
var. <i>sachalinica</i> JACOB.													
65. <i>Lania textor</i> L.		x					x	x		x	x	x	
66. <i>Monochamus galloprovincialis</i> OLIV.													
var. <i>pistor</i> GERM. ?										x	x	x	
67. <i>M. rosenmüllerii</i> CEDER.		x						x	x	x	x	x	
68. <i>M. sutor</i> L.										x			
var. <i>pellio</i> GERM.		x						x		x	x	x	
69. <i>Mesosa japonica</i> BATS.		x	x	x	x						?		
70. <i>M. myops</i> DAHLM.								x		x	x	x	
71. <i>Olenecamptus colopustulatus</i> MOTSCH.								x			x		Mongolia
72. <i>Pogonocherus fasciculatus</i> DE GEER										x			
Subsp. <i>pulus</i> MATSUSH.		x											
73. <i>Asaperda agapanthina</i> BATS.		x	x										N. Africa
74. <i>Acanthoderes clavipes</i> SCHRANK		x						x		x	x	x	
75. <i>Acanthocinus carinulatus</i> GEBL.		x						x		x	x	x	
76. <i>A. stillatus</i> BATS.		x	x								x		
77. <i>Agapanthia daurica</i> GANGLB.		x						x	x		x		
78. <i>Saperda balsamifera</i> MOTSCH.								x	x		x		
79. <i>S. laterimaculata</i> MOTSCH.									x		x		

Species	Localities										Other localities	
	Kuriles	Hokkaido	Honshu	Shikoku	Kyushu	Formosa	S. Korea	N. Korea	Manchuria	Europe		E. Siberia
80. <i>S. octomaculata</i> BLESS.		×										
var. <i>incana</i> PLAVILS.											×	
81. <i>Eutetrappa metallescens</i> MOTSCH.								×	×			
var. <i>chrysgargyrea</i> BATS.		×	×	×	×							
82. <i>Eutetrappa variicornis</i> BATS.		×	×	×				×				
83. <i>Menesia sulphurata</i> GEBL.		×							×		×	
84. <i>Cagosima sanguinolenta</i> THOMS.		×	×	×								
85. <i>Glenea relicta</i> PASC.		×	×	×								N. China
86. <i>Oberea rufomaculata</i> KONO et TAMANUKI											×	

## 摘 要

### 樺太島産天牛科昆虫目録

南北樺太の天牛科昆虫は現在59種知られてゐるが、今回記載せる1新種と1變種、1異常形並に未記録種等を加へると86種となる。之等の種類で新しく和名を冠したものは下記のものである。

- |   |              |
|---|--------------|
| 1. <i>Acmacops</i> (s. str.) <i>septentrionis</i> THOMSON | キタクニハナカミキリ   |
| 2. <i>Allosterna elegantula</i> KRAATZ                    | クロヒメハナカミキリ   |
| 3. <i>Grammoptera cyanea</i> TAMANUKI                     | ルリイロヒメカミキリ   |
| 4. <i>Leptura</i> (s. str.) <i>dubia</i> SCOPOLI          | ヒメアカハナカミキリ   |
| 5. <i>Obrium gracilis</i> PLAVILSTSHIKOV                  | チビカミキリ       |
| 6. <i>Callidium coriaceum</i> PAYKULL                     | ブロンズヒラタカミキリ  |
| 7. <i>Xylotrechus altaicus</i> GEBLER                     | アルタイトラカミキリ   |
| 8. <i>Clytus arietoides</i> REITTER                       | キョクトウトラカミキリ  |
| 9. <i>Chlorophorus herbsti faldermanni</i> FALDERMANN     | ムツボシアラトラカミキリ |
| 10. <i>Monochammus galloprovincialis</i> OLIVIER          |              |
| var. <i>pistor</i> GERMAR?                                | カラフトヒゲナガカミキリ |
| 11. <i>Mesosa myops</i> DAHLMAN                           | ハンノキゴマダラカミキリ |
| 12. <i>Saperda balsamifera</i> MOTSCHULSKY                | キボシマダラカミキリ   |
| 13. <i>Saperda octomaculata</i> BLESSIG                   |              |
| var. <i>incana</i> PLAVILSTSHIKOV                         | ハイイロヤホシカミキリ  |
| 14. <i>Menesia sulphurata</i> GEBLER                      | キモンヒメカミキリ    |

尙本文中には下記5種の朝鮮産未記録種をも報告した。

- |   |                  |
|---|------------------|
| 1. <i>Pachyta lamed</i> LINNÉ                           | カタキカタビロハナカミキリ    |
| 2. <i>Evodinus borealis</i> GYLLENHAL                   | クモマハナカミキリ        |
| 3. <i>Gaurotis virginea kozhevnikovi</i> PLAVILSTSHIKOV | コマクビアカハナカミキリ(新稱) |
| 4. <i>Nivellia sanguinosa</i> GYLLENHAL                 | クビボツハナカミキリ       |
| 5. <i>Chlorophorus herbsti faldermanni</i> FALDERMANN?  | ムツボシアラトラカミキリ     |